



# Ultrasound in Neonatal and Pediatric Intensive Care

Venue family systems\*

Now everywhere  
is point of care

\*Venue family, as referenced herein, includes Venue™, Venue Go™, Venue Fit™, and Venue Sprint™ systems

# When you need clear insights

## Safely and confidently evaluate your tiniest patients

In an environment as challenging as the PICU/NICU, you want to make sure you have tools that help you be there for your smallest and most vulnerable patients. We designed Venue family ultrasound systems to provide simple, fast and precise scans without the need for ionizing radiation to help you make confident clinical decisions.

### With Venue ultrasound systems you can:

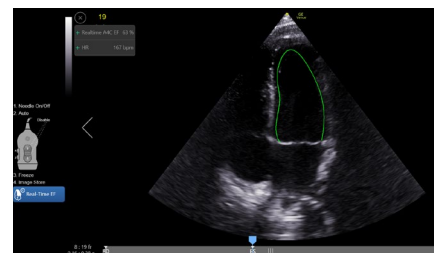
- Perform cranial ultrasound to evaluate for potential hemorrhage
- Confirm endotracheal tube placement and placement of catheter tip
- Quickly evaluate cardiac function, lung function, and bowel viability
- Minimize busywork with protocol management and easy documentation features

Whether you're looking for an adaptable model that goes from cart to table to wall, or a console system with a large screen, there is a versatile, robust, easy-to-use Venue family system made for you.



# Work smarter not harder with AI-enabled tools

Our goal with Venue family ultrasound systems was to simplify the complex—helping you increase exam efficiency for little patients who often have a hard time staying still. Leveraging data and proprietary algorithms, AI-based clinical tools help users of all experience levels confidently make clinical decisions.

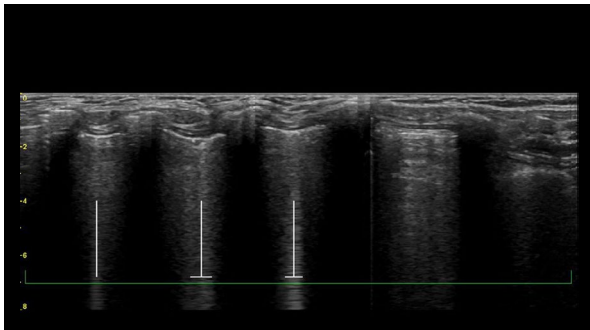


## Real-time EF

Enables continuous calculation of real-time ejection fraction without having to conduct an ECG.<sup>1</sup> Capture instant, precise results — within +/- 10 percent points of experts in 80% of cases.<sup>2</sup>

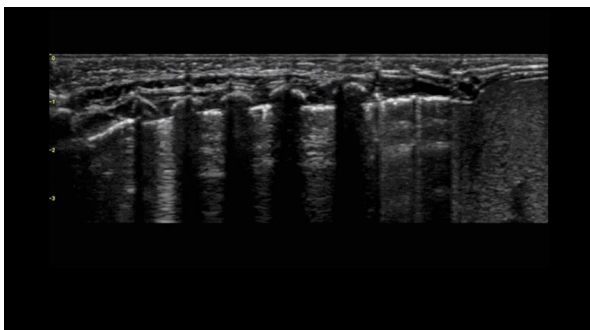
# Make confident decisions with our advanced capabilities

We purposefully equipped Venue family systems with a broad array of tools you can use to help improve patient comfort, increase productivity and throughput, and decrease the risk of complications. Built-in learning helps inexperienced users get up to speed fast, helping elevate department expertise and consistency.



## Highlight and count B-lines in real time

With the Auto B-lines tool, you can calculate overall lung score in one step. Use it in conjunction with Lung Sweep to highlight B-line and display the frame with the most B-lines per rib space.



## Visualize the entire lung with Lung Sweep

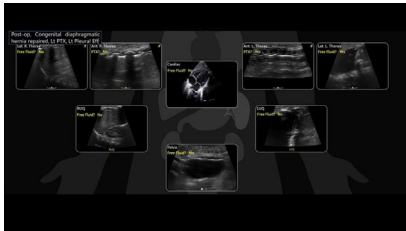
Lung Sweep provides a dynamic panoramic view of the entire lung. It activates when the probe taps the body and deactivates when the probe is lifted, so there's no need to touch the screen.



# Keep moving with optimized workflow

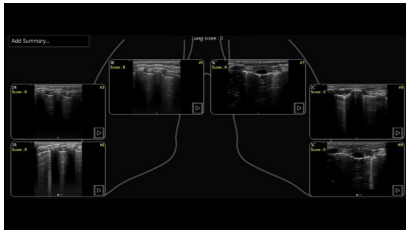
Let Venue family systems handle the busywork with protocol management and easy documentation features to provide a visual overview.

## Easy and quick exam documentation



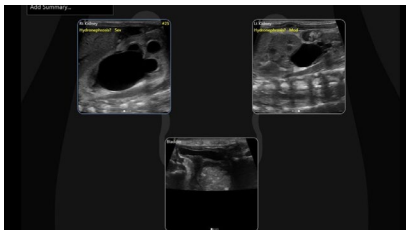
### eFAST diagram

Allows users to assess and document patient status, from internal bleeding to pneumothorax, with up to an 80% reduction in keystrokes.<sup>3</sup>



### Lung diagram

Single-view diagram of anatomical lung segments with one-click image storing that automatically calculates the Lung Ultrasound Score (LUSS).



### Renal diagram

Provides easy follow-up for patients with suspected hydronephrosis.



### Bladder Volume Tool

This simplified workflow tool features reference images as guidance and supports clinicians in calculation of the bladder volume. The tool is designed to guide bladder volume measurements to make it simple and fast.

## See more, faster



### Simple Screen

Remove the clutter and see only what you need to see. This feature allows you to see up to a 39%<sup>4</sup> larger ultrasound image and view only the icons you want.



### Follow Up

Automatically recalls parameter settings from a previous exam, including comments and body patterns. Also supports monitoring patient treatment response over time, with a side-by-side view of historical and new images.

## Assist training with Scribble

Fast-track training by leveraging a touch-operated pointer and free-drawing capabilities, visible on an external monitor or shared screen.



# See what you need to see

Experience clear images on a range of pediatric patients with the latest probes and transducers for the Venue family. With our button probes, you can perform procedures while controlling multiple parameters from the probe without breaking the sterile field.

## Linear

### L4-20t-RS

XDclear™

Supports high-frequency imaging of superficial structures while also being able to penetrate deeper anatomy without compromising imaging quality. With four configurable buttons.



### L10-22-RS

A high-frequency linear array.



### 9L-RS

A linear array specifically designed for vascular access.



### L8-18i-RS

Specially designed and utilized for applications like peripheral vascular, small parts, nerve blocks, and needle guidance.



## Curved (convex)

### C1-5-RS

Supporting imaging of mid to deep structures.



### C2-9-RS

XDclear™

Curved probe with XDclear technology delivers powerful high fidelity and wide bandwidth for impressive deep penetration and high resolution.



### 8C-RS

Micro convex with high-frequency, wide field of view and small footprint.



## Sector

### 12S-RS

Very high-frequency probe for neonatal and infant cardiac imaging.



### 3Sc-RS

Sector probe for high quality cardiac, abdomen, lung, and transcranial imaging.



### 6S-RS

High-frequency sector for pediatric, cardiac, abdomen, lung and transcranial imaging.



## Wireless dual probes

### Vscan Air™ SL & Vscan Air™ CL

Dual-probe imaging power—complete shallow and deep scans without switching probes or compromising image quality. SL features sector and linear ends, while CL features curved and linear ends.



Explore all ultrasound transducers [→](#)

# Made for your point of care

From bedside to tight spaces, our systems can go from cart to table to wall to accommodate common procedural environments.



## Easy to reach probes

Smart cable management puts probes safely up top and cables out of the way and off the floor



## Easy to clean

Smooth and seamless surface supports infection control efforts



## Reliable support

The Venue family is backed by a multi-year warranty<sup>5</sup>



## Long operation

Batteries can provide active scan times of up to four hours



## Robust

A durable screen, bumpers and multi-purpose handles protect against bumps, bangs, and slashes

## Easy to move

Sleek footprint and big wheels for nimble maneuvering.



# 4 systems. 1 shared platform.

Wherever you perform procedures, there is a Venue system designed to meet your needs. Learn more about the members of the Venue family with this side-by-side comparison.



	Venue	Venue Go	Venue Fit	Venue Sprint
<b>Portability</b>	Adjustable cart base	Unit detaches from adjustable cart and allows for use on table top or standard VESA* connection	Unit detaches from adjustable cart and allows for use with kickstand or standard VESA connection	Tablet style detaches from cart
<b>Battery life (scan time)</b>	Up to 4 hours	Up to 2 hours	Up to 1 hour	Up to 50 minutes
<b>Monitor size</b>	19" (48.3 cm) color touch screen	15.6" (39.6 cm) color touch screen	14" (35.6 cm) color touch screen	13" (33 cm) color touch screen
<b>Ratio</b>	5:4	16:9	16:9	16:9
<b>Active probe ports</b>	4 (plus wireless connectivity)	3 (plus wireless connectivity)	2 (plus wireless connectivity)	Wireless only
<b>Footprint of cart</b>	19.4" (492.8 mm) wide x 21.4" (543.6 mm) deep	19.9" (505 mm) wide x 18.9" (480 mm) deep	18.7" (474.9 mm) wide x 18.7" (474.9 mm) deep	18.7" (474.9 mm) wide x 18.7" (474.9 mm) deep
<b>Weight of unit (off cart)</b>	-	13.9 lbs. (6.3 kg)	12 lbs. (5.44 kg)	1.97 lbs. (0.89 kg)



# GE HealthCare

Learn more about the Venue family at work  
in neonatal and pediatric critical care



## About GE HealthCare Technologies Inc.

GE HealthCare is a leading global medical technology, pharmaceutical diagnostics, and digital solutions innovator, dedicated to providing integrated solutions, services, and data analytics to make hospitals more efficient, clinicians more effective, therapies more precise, and patients healthier and happier. Serving patients and providers for more than 125 years, GE HealthCare is advancing personalized, connected, and compassionate care, while simplifying the patient's journey across the care pathway. Together our Imaging, Ultrasound, Patient Care Solutions, and Pharmaceutical Diagnostics businesses help improve patient care from diagnosis, to therapy, to monitoring. We are a \$19.6 billion business with approximately 51,000 colleagues working to create a world where healthcare has no limits.

Follow us on [Facebook](#), [LinkedIn](#), [Twitter](#), [Instagram](#) and [Insights](#) for the latest news, or visit our website [gehealthcare.com](https://www.gehealthcare.com) for more information.

### References:

1. Excluding neonates
2. Based on DOC2567747—Venue R4 PS-DRS Real-Time EF VRS rev 2 (test 23621).
3. Supporting evidence for Venue and Venue Go is documented in DOC2391130.  
Supporting evidence for Venue Fit is documented in DOC2454794.
4. Supporting evidence for Venue (at 39% larger) and Venue Go (at 18% larger) is documented in DOC2391130.  
Supporting evidence for Venue Fit (at 18% larger) is documented in DOC2454794.
5. Please consult your local GE Healthcare representative for warranty term information in your region.

GE HealthCare reserves the right to make changes in specifications and features shown herein, or discontinue the product described at any time without notice or obligation.

© 2024 GE HealthCare. Venue, Venue Go, and Venue Fit are trademarks of GE HealthCare. VESA is a trademark of the Video Electronics Standards Association. GE is a trademark of General Electric Company used under trademark license.

Venue family R5  
August 2024  
JB29278XX