









Transducer Guide

LOGIQ S8

LOGIQ S8 transducers help you achieve superb image quality. This collection of transducers provides extensive flexibility across a broad range of applications. With advanced engineered LOGIQ transducers, you can feel confident you have the technology to provide excellent patient care.

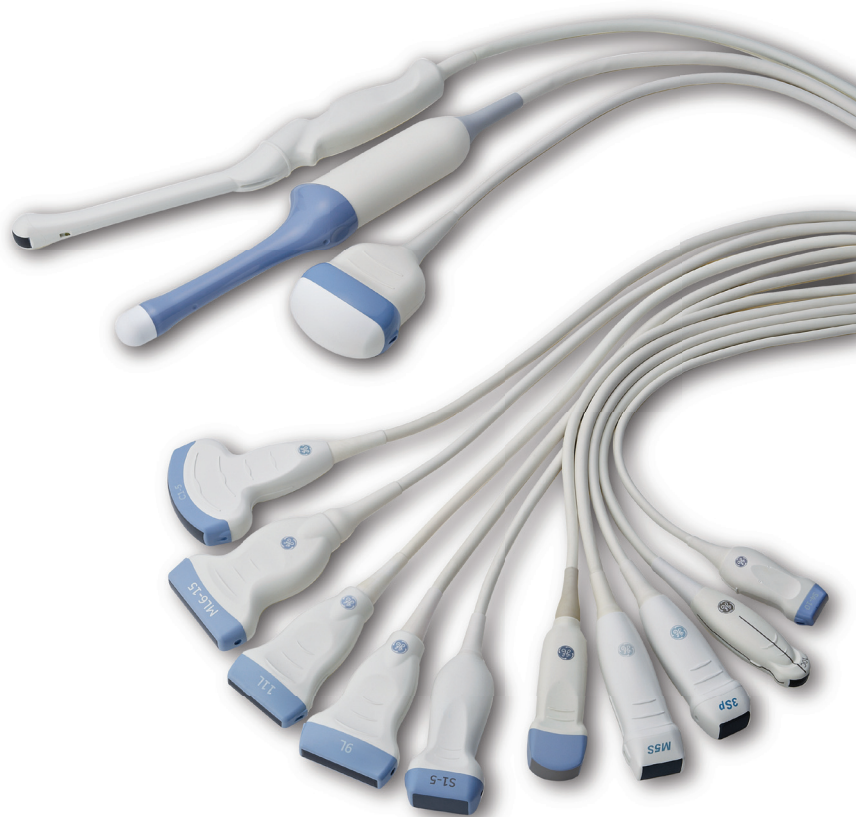


	Description	Applications	FOV	Frequency Range†	Biopsy Guide
Sector					
	Broad-spectrum sector transducer	Neonatal, Pediatrics	90°	3 – 9 MHz	No
	Broad-spectrum sector matrix array transducer	Cardiac, Transcranial, Stress	120°	1 – 5 MHz	No
	Broad-spectrum sector transducer	Abdominal, Vascular, Obstetrics, Gynecology	90°	1 – 6 MHz	Multi-angle, disposable with a reusable bracket
	Broad-spectrum sector transducer	Cardiac, Transcranial, Stress	120°	1 – 5 MHz	No
	Broad-spectrum sector transducer	Adult Cardiac, Pediatric Cardiac	90°	2 – 8 MHz	No
Convex					
	Broad-spectrum convex transducer	Abdominal, Obstetrics, Gynecology, Urology, Vascular	70°	1 – 6 MHz	Multi-angle, disposable with a reusable bracket
Micro-convex					
	Broad-spectrum micro-convex transducer	Neonatal, Pediatrics, Vascular	102°	4 – 12 MHz	No
	Broad-spectrum micro-convex intra-cavitary transducer	Obstetrics, Gynecology, Urology	145°	3 – 10 MHz	Single-angle, disposable, or Single-angle, reusable
	Broad-spectrum micro-convex biopsy transducer	Abdomen	80°	1 – 6 MHz	Single-angle, disposable with a reusable bracket; Multi-angle with a reusable bracket

	Description	Applications	FOV	Frequency Range†	Biopsy Guide
Linear					
 9L-D	Broad-spectrum linear transducer	Vascular, Small Parts, Pediatric, Abdominal	44 mm	2 – 8 MHz	Multi-angle, disposable with a reusable bracket
 ML6-15-D	Broad-spectrum linear matrix array transducer	Vascular, Small Parts, Neonatal, Pediatrics	50 mm	4 – 15 MHz	Multi-angle, disposable with a reusable bracket
 L8-18i-D	Broad-spectrum linear transducer	Small Parts, Vascular, Interoperative	25 mm	4 – 15 MHz	No
 11L-D	Broad-spectrum linear transducer	Vascular, Small Parts, Neonatal, Pediatrics	38 mm	3 – 11 MHz	Multi-angle, disposable with a reusable bracket
Real-time 4D					
 RIC5-9-D	Multi-frequency real-time 4D micro-convex transducer	Obstetrics, Gynecology, Urology	145°	3 – 10 MHz	Single-angle, reusable
 RAB6-D	Multi-frequency real-time 4D Convex transducer	Abdominal, Obstetrics, Gynecology, Pediatrics	63°	2 – 8 MHz	Multi-angle disposable with reusable bracket
Specialty					
 P2D	CW split crystal pencil transducer	Cardiac, Vascular		2.0 MHz	No
 P6D	CW split crystal pencil transducer	Cardiac, Vascular		6.3 MHz	No
 C2-6b-D	Biopsy Convex transducer	Abdominal, Interventional	61°	2 – 6 MHz	Multi-angle disposable
 6TC-RS	TEE transducer	Cardiac	90°	2 – 8 MHz	No

About GE Healthcare:

GE Healthcare provides transformational medical technologies and services to meet the demand for increased access, enhanced quality and more affordable healthcare around the world. GE (NYSE: GE) works on things that matter – great people and technologies taking on tough challenges. From medical imaging, software & IT, patient monitoring and diagnostics to drug discovery, biopharmaceutical manufacturing technologies and performance improvement solutions, GE Healthcare helps medical professionals deliver great healthcare to their patients.



For more information contact your GE Healthcare Sales Representative or call (888) 202-5528.

Learn more about LOGIQ S8 by visiting us at www.gehealthcare.com/ultrasound or use the QR code below.



©2013 General Electric Company – All rights reserved.

General Electric Company reserves the right to make changes in specifications and features shown herein, or discontinue the product described at any time without notice or obligation. Contact your GE Representative for the most current information.

* GE, the GE Monogram, and LOGIQ are trademarks of General Electric Company.

GE Medical Systems Ultrasound & Primary Care Diagnostics, LLC, a General Electric company, doing business as GE Healthcare.

GE Healthcare
9900 Innovation Drive
Wauwatosa, WI 53226
U.S.A.
www.gehealthcare.com

