

OrthoWorks

**Elective Applications**

# Case Study: Assessing Axillary Lesion with FSE Flex

**Clinical solutions**

System: Discovery™ MR750w GEM

**Protocols used**Axial T2 FSE Flex, Axial FOCUS DWI,  
Coronal T2 FSE Flex**Patient history**

A 90-year-old patient with a known squamous cell carcinoma in the axilla was examined.

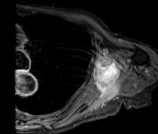
**Procedure**

FSE Flex and FOCUS DWI were used through the area of interest. Post contrast images included FSE Flex and 3D Turbo LAVA. Data was post-processed with READYView.

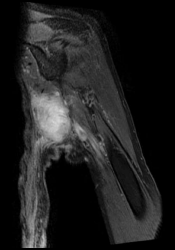
**MR findings**

With a previous diagnosis of squamous cell carcinoma, the lesion in the axilla could be a metastatic lesion from this or a new cancer. The results from the MR scan changed the course of treatment to determine the appropriate therapy for an axilla lesion.

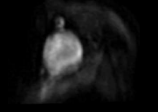
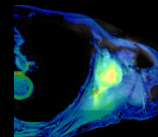

Axial T2 FSE Flex



Coronal T2 FSE Flex



Axial FOCUS DWI

Fusion of FOCUS DWI  
to FSE Flex
 [back to app](#)