

High Acuity Care Insights

Delivering data clarity at the right moment

GE HealthCare's High Acuity Care Insights helps care teams visualize, analyze, and share aggregated patient data from clinical information systems in a manner that's easy to interpret while also allowing for quick and intuitive use. High Acuity Care Insights, a web-based data visualization tool, helps clinical teams easily create user-friendly reports* and dashboards* that may help provide support for research, benchmarking, operational improvements, and more.

High Acuity Care Insights is a web-based solution comprised of Self-Business Intelligence (Self-BI) tools that users can utilize to not only create their own reports, but also easily share or export data to other third parties via a simple link.



Self-BI tools allow users to quickly create customized reports

With Self-BI functionality and a user-friendly reports wizard, users can generate their own reports and save them within their own folders. The wizard allows users to customize their own views, add or remove data items, and select different viewing and layout options such as line, bar, pie, and more.

Pre-configured reports and dashboards make data analysis easy

High Acuity Care Insights contains several pre-configured reports and dashboards that support analytics needs for critical care and anesthesia care settings. Example reports include:



Quality indicators

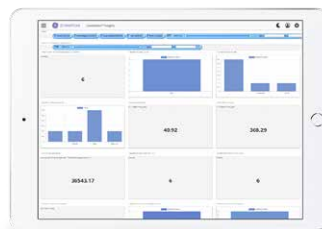


Admission report



Discharge report

Dive deeper with High Acuity Care Insights today



High Acuity Care Insights is a single solution that allows users to view KPIs and tracks billing and financial metrics while helping to improve compliance with best practices—all in one place. Contact your GE HealthCare representative to learn more.

*Version 1.0 of High Acuity Care Insights interacts with the CHA warehouse database only. As such, all reports and analytics are retrospective. High Acuity Care Insights is not intended to diagnose, treat, mitigate, or cure clinical conditions or influence current clinical care practices. For use with CHA data warehouse as a business intelligence tool only.

Layout options/features/dashboards are configurable and subject to change.

©2023 GE HealthCare.

Not all products or features are available in all markets. Document based on DOC2868337, DOC2897939, and DOC2929734. Contact a GE HealthCare representative for more information. Please visit <http://www.gehealthcare.com>. Data subject to change. GE is a trademark of General Electric Company used under trademark license. Centricity is a trademark of GE HealthCare. Microsoft and Windows are trademarks of the Microsoft group of companies. Google and Chrome are trademarks of Google LLC.

JB27502XX