

## ***Invasive Cardiology Security Website***

### ***Interventional - Invasive Cardiology***

<b>Product Group:</b>	Interventional Invasive Products
<b>Products:</b>	Mac-Lab, CardioLab and ComboLab Recording Systems, Centricity Cardiology Data Management Systems
<b>Version:</b>	Altix (v7)
<b>Subject:</b>	Security Information
<b>Date:</b>	12 June 2026

#### **Summary**

The following information is provided to GE Healthcare Technologies customers in regards to known technical security vulnerabilities associated with Mac-Lab® Hemodynamic, CardioLab® Electrophysiology, SpecialsLab and ComboLab IT Recording Systems for Cath Lab, EP Lab and other interventional labs as well as the Centricity® Cardiology Data Management Systems.

#### **Security Patch Base Configuration**

The security patch base configuration of the Mac-Lab and CardioLab product at release is listed in the Appendix section.

#### **Process**

The following actions are taken whenever Microsoft/OEMs releases new security patches:

- The Invasive Cardiology Engineering Team performs a security analysis process for supported Mac-Lab, CardioLab, GE Acquisition/Client Review and INW Server hardware/software.
- If a vulnerability meets Mac-Lab and CardioLab validation criteria, the vulnerability is communicated through the GEHC Product Security Database and Invasive Cardiology Security Website within three weeks of the patch release.
- Upon validation of the Mac-Lab and CardioLab vulnerability, the GEHC Product Security Database and Invasive Cardiology Security Website and affected Mac-Lab and CardioLab Security Patch Installation Instructions are updated.



The Mac-Lab and CardioLab vulnerability validation criteria are as follows: Any vulnerability that allows malware to alter or deny Mac-Lab and CardioLab functionality and/or infect and propagate through normal system use.

Customers are responsible to stay informed with Microsoft vulnerability notifications and to visit the Invasive Cardiology websites to understand the Mac-Lab and CardioLab impact. Once a security patch is validated, customers are responsible for the installation of security patches. All Mac-Lab and CardioLab Security Patch Installation Instructions are available on the Invasive Cardiology Security Website.

Vulnerabilities exposed after the Mac-Lab and CardioLab product release which do not meet the criteria to be validated are not listed within the GEHC Product Security Database and Invasive Cardiology Security Website. These vulnerabilities are deemed to be non-critical and/or outside normal clinical workflow of the Mac-Lab , CardioLab and Centricity INW systems and will not be validated.

## CONTENTS

<b>Revision History</b> .....	<b>5</b>
<b>Document layout</b> .....	<b>18</b>
<b>How to confirm the version of Mac-Lab/CardioLab/ComboLab application and INW Server is Altix (v7)</b> .....	<b>18</b>
<b>Installation of the Security Patches on MLCL systems</b> .....	<b>19</b>
<b>How to Log On to Acquisition/Review/INW Server Systems</b> .....	<b>19</b>
<b>System Type and installation of Qualified Patches</b> .....	<b>19</b>
<b>Requirement of Microsoft Runtime Libraries for Carto licensed systems</b> .....	<b>20</b>
<b>How to identify the type of Physical Review System</b> .....	<b>21</b>
<b>Installation Paths</b> .....	<b>21</b>
<b>Patch Links</b> .....	<b>23</b>
Unqualified Patches MLCL v7.0.0.....	23
MLCL v7.0 Patches.....	24
2019 Image ACQ and 2019 Image DELL 5060/5070 Review.....	24
2020/2021 Image ACQ and 2020/2021 Image DELL 5060/5070 Review .....	27
Revised 2021 Image ACQ.....	30
Windows Server 2016 (INW) .....	33
Dell 7080 Review only.....	34
Software Only Review(Windows 10 Pro/Enterprise, Windows 11) .....	37
<b>DELL 5820 Tower BIOS update to v2.48.0 Instructions:</b> .....	<b>37</b>
<b>Disabling RC4 and 3DES Cipher for resolving Sweet32 OpenSSL Vulnerability (CVE-2016-2183)</b> .....	<b>38</b>
<b>OPTIONAL – Remove Microsoft Windows Unquoted Service Path Enumeration Vulnerability in Windows Server 2016</b> .....	<b>39</b>
<b>Enforce WinVerifyTrust Signature Validation (CVE-2013-3900)</b> .....	<b>40</b>

<b>Fix for Microsoft Browser Information Disclosure Vulnerability (CVE-2017-8529)</b> .....	<b>40</b>
<b>OPTIONAL - Windows Speculative Execution Configuration Check</b> .....	<b>41</b>
<b>Steps for Enabling Boot from Removable Media</b> .....	<b>41</b>
<b>Steps for Disabling Boot from Removable Media</b> .....	<b>41</b>
<b>Workarounds for installing Windows Cumulative Updates for Altix / Altix BT21:</b> .....	<b>41</b>
<b>Office 2016 End of support:</b> .....	<b>43</b>
Option 1: Upgrade to Microsoft Office 2024 LTSC.....	43
Option 2: Remove Office 2016.....	44
Option 3: Continue with Office 2016 without Microsoft Support .....	46
<b>Office 2024 LTSC Update Instructions:</b> .....	<b>46</b>
<b>Office 2024 LTSC Configuration File</b> .....	<b>47</b>
<b>Appendix:</b> .....	<b>48</b>
<b>Security Patch Base Configuration</b> .....	<b>48</b>
Validated Microsoft Patches Included on 7.0 Installation .....	48
DELL 5820 7.0 with Microsoft Windows 10 Enterprise 2016 LTSB – 2019 Image.....	48
DELL 5820 7.0 with Microsoft Windows 10 Enterprise 2016 LTSB – 2020/2021 Image .....	51
DELL 5820 7.0 with Microsoft Windows 10 Enterprise 2016 LTSB – Revised 2021 Image .....	54
DELL 5060 7.0 with Microsoft Windows 10 Enterprise 2016 LTSB – 2019 Image.....	57
DELL 5060 7.0 with Microsoft Windows 10 Enterprise 2016 LTSB – 2020/2021 Image .....	60
DELL 5070 7.0 with Microsoft Windows 10 Enterprise 2016 LTSB – 2019 Image.....	63
DELL 5070 7.0 with Microsoft Windows 10 Enterprise 2016 LTSB – 2020/2021 Image .....	65
DELL 7080 7.0 with Microsoft Windows 10 Enterprise LTSC 2018 .....	69
<b>Contact Information</b> .....	<b>72</b>

## Revision History

Revision	Date	Comments
1.0	20 January 2020	<ul style="list-style-type: none"> <li>• Listed Qualified August 2019 Patches</li> <li>• Listed Qualified September 2019 Patches</li> <li>• Listed Service Stack Update Patch for server</li> <li>• Listed Qualified October 2019 Patches</li> <li>• Listed Qualified November 2019 Patches</li> <li>• Listed Service Stack Update Patch</li> <li>• Listed Qualified December 2019 Patches</li> <li>• Listed Qualified January 2020 Patches</li> </ul>
2.0 (Initial public release)	23 January 2020	<ul style="list-style-type: none"> <li>• Added link to security portal with work direction</li> <li>• Document clarification (changed Patch links to Patch Details, Removed 2019)</li> <li>• Updated Note specific to Software Only Review</li> </ul>
3.0	17 February 2020	<ul style="list-style-type: none"> <li>• Added back links to document for patches.</li> <li>• Reverted section name from Patch Details to Patch Links</li> <li>• Removed link to security portal</li> <li>• Removed document redundancies (x64)</li> </ul>
4.0	18 March 2020	<ul style="list-style-type: none"> <li>• Listed Qualified February 2020 Patches</li> <li>• Included Security Patch Base Configuration in the Appendix section.</li> <li>• Security Patch Base Configuration updated for clarification</li> </ul>
5.0	20 May 2020	<ul style="list-style-type: none"> <li>• Listed Qualified March 2020 Patches</li> <li>• Listed Qualified April 2020 Patches</li> <li>• Listed DELL 5070 in Security Patch Base Configuration</li> </ul>
6.0	29 October 2020	<ul style="list-style-type: none"> <li>• Added MLCL v7.0 Qualified Patch List section.</li> <li>• Renamed “MLCL V7 Patches” to “MLCL v7.0 Patches”</li> <li>• Moved applicable existing content to MLCL v7.0 Qualified Patch List section</li> <li>• Document reorganized where appropriate to improve organization</li> <li>• Listed Qualified April 2020 Service Stack Update patch</li> <li>• Listed Qualified May 2020 Patches</li> <li>• Listed Qualified July 2020 Patches</li> <li>• Updated Unqualified Patches MLCL v7.0.0 section</li> </ul>

7.0	11 November 2020	<ul style="list-style-type: none"> <li>• Updated Unqualified Patches MLCL v7.0.0 section</li> <li>• Updated MLCL v7.0 Patches section with qualified patches.</li> </ul>
8.0	23 March 2021	<ul style="list-style-type: none"> <li>• Listed February 2021 SSU</li> <li>• Listed Qualified February 2021 Patches</li> <li>• Moved existing content to MLCL v7.0 Qualified Patch List section</li> <li>• Listed September 2020 SSU in MLCL v7.0 Qualified Patch List section</li> <li>• Listed Qualified November 2020 Patches in MLCL v7.0 Qualified Patch List section</li> <li>• Updated Unqualified Patches MLCL v7.0.0 section</li> <li>• Security Patch Base Configuration – Revised text</li> <li>• Appendix: Security Patch Base Configuration – Added</li> </ul>
9.0	14 April 2021	<ul style="list-style-type: none"> <li>• Updated Security Patch Base Configuration section with DELL 7080 information in Appendix</li> <li>• Updated MLCL v7.0 Patches section</li> <li>• Updated Document Layout section</li> <li>• Updated Installation of the Security Patches on MLCL systems section</li> <li>• Updated Unqualified Patches MLCL v7.0.0</li> </ul>
10.0	15 June 2021	<ul style="list-style-type: none"> <li>• Listed April 2021 SSU for Windows 10 1607/Windows Server 2016</li> <li>• Listed May 2021 SSU for Windows 10 1809</li> <li>• Listed May 2021 Cumulative Security Updates for Windows 10 1607,1809 and Windows Server 2016</li> <li>• Removed 2020-06 Security Update for Adobe Flash</li> <li>• Updated MLCL v7.0 Qualified Patch List section</li> </ul>
11.0	19 July 2021	<ul style="list-style-type: none"> <li>• Listed Security Updates to address PrintNightmare for Windows 10 1607,1809 and Windows Server 2016</li> <li>• Updated Unqualified Patches MLCL v7.0.0 section</li> <li>• Updated MLCL v7.0 Patches section</li> <li>• Updated MLCL v7.0 Qualified Patch List section</li> </ul>
12.0	12 August 2021	<ul style="list-style-type: none"> <li>• Listed August 2021 Cumulative Security Updates for Windows 10 1607,1809 and Windows Server 2016</li> <li>• Updated MLCL v7.0 Patches section</li> <li>• Updated MLCL v7.0 Qualified Patch List section</li> </ul>
13.0	18 August 2021	<ul style="list-style-type: none"> <li>• Updated Document Layout section</li> <li>• Listed DELL 5820 BIOS Update to v2.8.0 Instructions</li> <li>• Listed Installation Paths</li> <li>• Updated Unqualified Patches MLCL v7.0.0 section</li> <li>• Updated MLCL v7.0 Patches section</li> </ul>

		<ul style="list-style-type: none"> <li>• Moved MLCL v7.0 Qualified Patch List section to Appendix</li> <li>• Updated Appendix: Security Patch Base Configuration</li> <li>• Additional update made for clarification</li> </ul>
14.0	9 September 2021	<ul style="list-style-type: none"> <li>• Updated Installation Paths section</li> <li>• Updated “How to identify the type of Physical Review System” section</li> <li>• Updated System Type and installation of Qualified Patches section</li> <li>• Updated MLCL v7.0 Patches section</li> <li>• Updated Appendix: Security Patch Base Configuration</li> <li>• Additional update made for clarification</li> </ul>
15.0	12 November 2021	<ul style="list-style-type: none"> <li>• Updated MLCL v7.0 Patches section</li> <li>• Updated MLCL v7.0 Qualified Patch List section</li> <li>• Additional update made for clarification</li> </ul>
16.0	15 December 2021	<ul style="list-style-type: none"> <li>• Updated MLCL v7.0 Patches section</li> <li>• Updated MLCL v7.0 Previously Qualified Patch List section</li> </ul>
17.0	02 February 2022	<ul style="list-style-type: none"> <li>• Updated MLCL v7.0 Patches section</li> <li>• Added section Disabling RC4 and 3DES Cipher for resolving Sweet32 OpenSSL Vulnerability (CVE-2016-2183)</li> </ul>
18.0	03 March 2022	<ul style="list-style-type: none"> <li>• Updated Installation Paths section</li> <li>• Updated System Type and installation of Qualified Patches section</li> <li>• Updated How to identify the type of Physical Review System section</li> <li>• Updated Patch Links section</li> <li>• Updated MLCL v7.0 Patches section</li> <li>• Updated Appendix: Security Patch Base Configuration</li> <li>• Updated MLCL v7.0 Previously Qualified Patch List</li> <li>• Added section OPTIONAL – Remove Microsoft Windows Unquoted Service Path Enumeration Vulnerability in Windows Server 2016</li> <li>• Additional update made for clarification</li> </ul>
19.0	04 April 2022	<ul style="list-style-type: none"> <li>• Updated MLCL v7.0 Patches section</li> <li>• Updated MLCL v7.0 Qualified Patch List section</li> <li>• Removed Link and Notes Columns in MLCL v7.0 Previously Qualified Patch List section</li> </ul>
20.0	22 April 2022	<ul style="list-style-type: none"> <li>• Listed March 2022 Service Stack Update and April 2022 Cumulative Update for Windows 10 1607/Windows Server 2016</li> <li>• Listed April 2022 Cumulative Update for Windows 10 1809</li> </ul>

		<ul style="list-style-type: none"> <li>• Updated MLCL v7.0 Patches section</li> <li>• Updated MLCL v7.0 Previously Qualified Patch List section</li> <li>• Updated Appendix: Security Patch Base Configuration</li> </ul>
21.0	01 July 2022	<ul style="list-style-type: none"> <li>• Listed May 2022 Service Stack Update and May 2022 Cumulative Update for Windows 10 1607/Windows Server 2016</li> <li>• Listed May 2022 Cumulative Update for Windows 10 1809</li> <li>• Updated MLCL v7.0 Patches section</li> <li>• Updated MLCL v7.0 Previously Qualified Patch List section</li> </ul>
22.0	15 July 2022	<ul style="list-style-type: none"> <li>• Listed June 2022 Cumulative Update for Windows 10 1607/Windows 10 1809/Windows Server 2016</li> <li>• Updated MLCL v7.0 Patches section</li> <li>• Removed MLCL v7.0 Previously Qualified Patch List section</li> </ul>
23.0	17 October 2022	<ul style="list-style-type: none"> <li>• Updated MLCL v7.0 Patches section <ul style="list-style-type: none"> <li>○ For Windows 10 1607/Windows Server 2016 <ul style="list-style-type: none"> <li>▪ Removed June 2022 Cumulative Update</li> <li>▪ Removed May 2022 Service Stack Update</li> <li>▪ Listed September 2022 Cumulative Update</li> <li>▪ Listed September 2022 Service Stack Update</li> </ul> </li> <li>○ For Windows 10 1809 <ul style="list-style-type: none"> <li>▪ Removed June 2022 Cumulative Update</li> <li>▪ Listed September 2022 Cumulative Update</li> </ul> </li> </ul> </li> <li>• Updated Unqualified Patches MLCL v7.0.0 section</li> </ul>
24.0	13 January 2023	<ul style="list-style-type: none"> <li>• Updated MLCL v7.0 Patches section <ul style="list-style-type: none"> <li>○ For Windows 10 1607/Windows Server 2016 <ul style="list-style-type: none"> <li>▪ Removed September 2022 Cumulative Update</li> <li>▪ Listed December 2022 Cumulative Update</li> </ul> </li> <li>○ For Windows 10 1809 <ul style="list-style-type: none"> <li>▪ Removed September 2022 Cumulative Update</li> <li>▪ Listed December 2022 Cumulative Update</li> </ul> </li> </ul> </li> </ul>
25.0	14 April 2023	<ul style="list-style-type: none"> <li>• Updated MLCL v7.0 Patches section <ul style="list-style-type: none"> <li>○ For Windows 10 1607/Windows Server 2016 <ul style="list-style-type: none"> <li>▪ Removed December 2022 Cumulative Update</li> <li>▪ Removed September 2022 Service Stack Update</li> <li>▪ Listed April 2023 Cumulative Update</li> </ul> </li> </ul> </li> </ul>

		<ul style="list-style-type: none"> <li>▪ Listed March 2023 Service Stack Update</li> <li>○ For Windows 10 1809 <ul style="list-style-type: none"> <li>▪ Removed December 2022 Cumulative Update</li> <li>▪ Listed April 2023 Cumulative Update</li> </ul> </li> </ul>
26.0	17 April 2023	<ul style="list-style-type: none"> <li>• Updated MLCL v7.0 Patches section</li> <li>• Added section Enforce WinVerifyTrust Signature Validation (CVE-2013-3900)</li> <li>• Added section Fix for Microsoft Browser Information Disclosure Vulnerability (CVE-2017-8529)</li> <li>• Added section OPTIONAL - Windows Speculative Execution Configuration Check</li> <li>• Removed DELL 5820 Tower BIOS Update to v2.8.0 Instructions</li> <li>• Added section DELL 5820 Tower BIOS Update to v2.25.0 Instructions</li> <li>• Updated Unqualified Patches MLCL v7.0.0 section</li> <li>• Updated Document layout section</li> </ul>
27.0	17 May 2023	<ul style="list-style-type: none"> <li>• Updated MLCL v7.0 Patches section</li> <li>• Updated section DELL 5820 Tower BIOS Update to v2.25.0 Instructions</li> </ul>
28.0	08 August 2023	<ul style="list-style-type: none"> <li>• Added section Mitigation for Security Vulnerabilities</li> <li>• Updated MLCL v7.0 Patches section <ul style="list-style-type: none"> <li>○ For Windows 10 1607/Windows Server 2016 <ul style="list-style-type: none"> <li>▪ Removed April 2023 Cumulative Update</li> <li>▪ Listed July 2023 Cumulative Update</li> </ul> </li> <li>○ For Windows 10 1809 <ul style="list-style-type: none"> <li>▪ Removed April 2023 Cumulative Update</li> <li>▪ Listed July 2023 Cumulative Update</li> </ul> </li> </ul> </li> </ul>
29.0	28 August 2023	<ul style="list-style-type: none"> <li>• Updated MLCL v7.0 Patches section <ul style="list-style-type: none"> <li>○ For Windows 10 1607/Windows Server 2016 <ul style="list-style-type: none"> <li>▪ Removed July 2023 Cumulative Update</li> <li>▪ Listed August 2023 Cumulative Update</li> </ul> </li> <li>○ For Windows 10 1809 <ul style="list-style-type: none"> <li>▪ Removed July 2023 Cumulative Update</li> <li>▪ Listed August 2023 Cumulative Update</li> </ul> </li> </ul> </li> </ul>
30.0	11 October 2023	<ul style="list-style-type: none"> <li>• Updated MLCL v7.0 Patches section</li> <li>• Removed DELL 5820 Tower BIOS Update to v2.25.0 Instructions</li> <li>• Added section DELL 5820 Tower BIOS Update to v2.31.0 Instructions</li> <li>• Removed section Mitigation for Security Vulnerabilities</li> </ul>

31.0	23 October 2023	<ul style="list-style-type: none"> <li>• Updated MLCL v7.0 Patches section           <ul style="list-style-type: none"> <li>○ For Windows 10 1607/Windows Server 2016               <ul style="list-style-type: none"> <li>▪ Removed August 2023 Cumulative Update</li> <li>▪ Listed October 2023 Cumulative Update</li> <li>▪ Removed March 2023 Service Stack Update</li> <li>▪ Listed September 2023 Service Stack Update</li> </ul> </li> <li>○ For Windows 10 1809               <ul style="list-style-type: none"> <li>▪ Removed August 2023 Cumulative Update</li> <li>▪ Listed October 2023 Cumulative Update</li> </ul> </li> </ul> </li> </ul>
32.0	18 December 2023	<ul style="list-style-type: none"> <li>• Updated MLCL v7.0 Patches section           <ul style="list-style-type: none"> <li>○ For Windows 10 1607/Windows Server 2016               <ul style="list-style-type: none"> <li>▪ Removed October 2023 Cumulative Update</li> <li>▪ Listed November 2023 Cumulative Update</li> <li>▪ Removed September 2023 Service Stack Update</li> <li>▪ Listed November 2023 Service Stack Update</li> </ul> </li> <li>○ For Windows 10 1809               <ul style="list-style-type: none"> <li>▪ Removed October 2023 Cumulative Update</li> <li>▪ Listed November 2023 Cumulative Update</li> </ul> </li> </ul> </li> </ul>
33.0	30 January 2024	<ul style="list-style-type: none"> <li>• Updated MLCL v7.0 Patches section           <ul style="list-style-type: none"> <li>○ For Windows 10 1607/Windows Server 2016               <ul style="list-style-type: none"> <li>▪ Removed November 2023 Cumulative Update</li> <li>▪ Listed December 2023 Cumulative Update</li> </ul> </li> <li>○ For Windows 10 1809               <ul style="list-style-type: none"> <li>▪ Removed November 2023 Cumulative Update</li> <li>▪ Listed December 2023 Cumulative Update</li> </ul> </li> </ul> </li> </ul>
34.0	08 March 2024	<ul style="list-style-type: none"> <li>• Updated MLCL v7.0 Patches section           <ul style="list-style-type: none"> <li>○ For Windows 10 1607/Windows Server 2016               <ul style="list-style-type: none"> <li>▪ Removed November 2023 Service Stack Update</li> <li>▪ Listed February 2024 Service Stack Update</li> <li>▪ Removed December 2023 Cumulative Update</li> <li>▪ Listed February 2024 Cumulative Update</li> </ul> </li> <li>○ For Windows 10 1809               <ul style="list-style-type: none"> <li>▪ Removed December 2023 Cumulative Update</li> <li>▪ Listed February 2024 Cumulative Update</li> </ul> </li> </ul> </li> </ul>

35.0	19 March 2024	<ul style="list-style-type: none"> <li>• Updated MLCL v7.0 Patches section</li> </ul>
36.0	22 April 2024	<ul style="list-style-type: none"> <li>• Updated MLCL v7.0 Patches section             <ul style="list-style-type: none"> <li>○ For Windows 10 1607/Windows Server 2016                 <ul style="list-style-type: none"> <li>▪ Removed February 2024 Service Stack Update</li> <li>▪ Listed April 2024 Service Stack Update</li> <li>▪ Removed February 2024 Cumulative Update</li> <li>▪ Listed April 2024 Cumulative Update</li> </ul> </li> <li>○ For Windows 10 1809                 <ul style="list-style-type: none"> <li>▪ Removed February 2024 Cumulative Update</li> <li>▪ Listed April 2024 Cumulative Update</li> </ul> </li> </ul> </li> </ul>
37.0	30 May 2024	<ul style="list-style-type: none"> <li>• Updated MLCL v7.0 Patches section             <ul style="list-style-type: none"> <li>○ For Windows 10 1607/Windows Server 2016                 <ul style="list-style-type: none"> <li>▪ Removed April 2024 Cumulative Update</li> <li>▪ Listed May 2024 Cumulative Update</li> </ul> </li> <li>○ For Windows 10 1809                 <ul style="list-style-type: none"> <li>▪ Removed April 2024 Cumulative Update</li> <li>▪ Listed May 2024 Cumulative Update</li> </ul> </li> </ul> </li> </ul>
38.0	16 July 2024	<ul style="list-style-type: none"> <li>• Updated MLCL v7.0 Patches section             <ul style="list-style-type: none"> <li>○ For Windows 10 1607/Windows Server 2016                 <ul style="list-style-type: none"> <li>▪ Removed April 2024 Service Stack Update</li> <li>▪ Listed July 2024 Service Stack Update</li> <li>▪ Removed May 2024 Cumulative Update</li> <li>▪ Listed July 2024 Cumulative Update</li> </ul> </li> <li>○ For Windows 10 1809                 <ul style="list-style-type: none"> <li>▪ Removed May 2024 Cumulative Update</li> <li>▪ Listed July 2024 Cumulative Update</li> </ul> </li> </ul> </li> </ul>
39.0	23 August 2024	<ul style="list-style-type: none"> <li>• Updated MLCL v7.0 Patches section             <ul style="list-style-type: none"> <li>○ For Windows 10 1607/Windows Server 2016                 <ul style="list-style-type: none"> <li>▪ Removed July 2024 Service Stack Update</li> <li>▪ Listed August 2024 Service Stack Update</li> <li>▪ Removed July 2024 Cumulative Update</li> <li>▪ Listed August 2024 Cumulative Update</li> </ul> </li> <li>○ For Windows 10 1809</li> </ul> </li> </ul>

		<ul style="list-style-type: none"> <li>▪ Removed July 2024 Cumulative Update</li> <li>▪ Listed August 2024 Cumulative Update</li> </ul>
40.0	08 October 2024	<ul style="list-style-type: none"> <li>• Updated MLCL v7.0 Patches section <ul style="list-style-type: none"> <li>○ For Windows 10 1607/Windows Server 2016 <ul style="list-style-type: none"> <li>▪ Removed August 2024 Service Stack Update</li> <li>▪ Listed September 2024 Service Stack Update</li> <li>▪ Removed August 2024 Cumulative Update</li> <li>▪ Listed September 2024 Cumulative Update</li> </ul> </li> <li>○ For Windows 10 1809 <ul style="list-style-type: none"> <li>▪ Removed August 2024 Cumulative Update</li> <li>▪ Listed September 2024 Cumulative Update</li> </ul> </li> </ul> </li> </ul>
41.0	19 November 2024	<ul style="list-style-type: none"> <li>• Updated MLCL v7.0 Patches section <ul style="list-style-type: none"> <li>○ For Windows 10 1607/Windows Server 2016 <ul style="list-style-type: none"> <li>▪ Removed September 2024 Cumulative Update</li> <li>▪ Listed October 2024 Cumulative Update</li> </ul> </li> <li>○ For Windows 10 1809 <ul style="list-style-type: none"> <li>▪ Removed September 2024 Cumulative Update</li> <li>▪ Listed October 2024 Cumulative Update</li> </ul> </li> </ul> </li> </ul>
42.0	16 December 2024	<ul style="list-style-type: none"> <li>• Updated MLCL v7.0 Patches section <ul style="list-style-type: none"> <li>○ For Windows 10 1607/Windows Server 2016 <ul style="list-style-type: none"> <li>▪ Removed October 2024 Cumulative Update</li> <li>▪ Listed December 2024 Cumulative Update</li> </ul> </li> <li>○ For Windows 10 1809 <ul style="list-style-type: none"> <li>▪ Removed October 2024 Cumulative Update</li> <li>▪ Listed December 2024 Cumulative Update</li> </ul> </li> </ul> </li> </ul>
43.0	20 February 2025	<ul style="list-style-type: none"> <li>• Updated MLCL v7.0 Patches section <ul style="list-style-type: none"> <li>○ For Windows 10 1607/Windows Server 2016 <ul style="list-style-type: none"> <li>▪ Removed September 2024 Service Stack Update</li> <li>▪ Listed January 2025 Service Stack Update</li> <li>▪ Removed December 2024 Cumulative Update</li> <li>▪ Listed February 2025 Cumulative Update</li> </ul> </li> <li>○ For Windows 10 1809 <ul style="list-style-type: none"> <li>▪ Removed December 2024 Cumulative Update</li> <li>▪ Listed February 2025 Cumulative Update</li> </ul> </li> </ul> </li> </ul>

44.0	14 March 2025	<ul style="list-style-type: none"> <li>• Updated MLCL v7.0 Patches section</li> <li>• Removed section DELL 5820 Tower BIOS Update to v2.31.0 Instructions</li> <li>• Added section DELL 5820 Tower BIOS Update to v2.38.0 Instructions</li> <li>• Added section Steps for Enabling Boot from Removable Media</li> <li>• Added section Steps for Disabling Boot from Removable Media</li> </ul>
45.0	23 April 2025	<ul style="list-style-type: none"> <li>• Updated MLCL v7.0 Patches section <ul style="list-style-type: none"> <li>○ For Windows 10 1607/Windows Server 2016 <ul style="list-style-type: none"> <li>▪ Removed January 2025 Service Stack Update</li> <li>▪ Listed April 2025 Service Stack Update</li> <li>▪ Removed February 2025 Cumulative Update</li> <li>▪ Listed April 2025 Cumulative Update</li> </ul> </li> <li>○ For Windows 10 1809 <ul style="list-style-type: none"> <li>▪ Removed February 2025 Cumulative Update</li> <li>▪ Listed April 2025 Cumulative Update</li> </ul> </li> </ul> </li> </ul>
46.0	02 June 2025	<ul style="list-style-type: none"> <li>• Updated MLCL v7.0 Patches section <ul style="list-style-type: none"> <li>○ For Windows 10 1607/Windows Server 2016 <ul style="list-style-type: none"> <li>▪ Removed April 2025 Service Stack Update</li> <li>▪ Listed May 2025 Service Stack Update</li> <li>▪ Removed April 2025 Cumulative Update</li> <li>▪ Listed May 2025 Cumulative Update</li> </ul> </li> <li>○ For Windows 10 1809 <ul style="list-style-type: none"> <li>▪ Removed April 2025 Cumulative Update</li> <li>▪ Listed May 2025 Cumulative Update</li> </ul> </li> </ul> </li> </ul>
47.0	01 July 2025	<ul style="list-style-type: none"> <li>• Updated MLCL v7.0 Patches section</li> <li>• Removed section DELL 5820 Tower BIOS Update to v2.38.0 Instructions</li> <li>• Added section DELL 5820 Tower BIOS Update to v2.42.0 Instructions</li> </ul>
48.0	21 August 2025	<ul style="list-style-type: none"> <li>• Updated MLCL v7.0 Patches section <ul style="list-style-type: none"> <li>○ For Windows 10 1607/Windows Server 2016 <ul style="list-style-type: none"> <li>▪ Removed May 2025 Service Stack Update</li> <li>▪ Listed July 2025 Service Stack Update</li> <li>▪ Removed May 2025 Cumulative Update</li> <li>▪ Listed July 2025 Cumulative Update</li> </ul> </li> <li>○ For Windows 10 1809 <ul style="list-style-type: none"> <li>▪ Removed May 2025 Cumulative Update</li> </ul> </li> </ul> </li> </ul>

		<ul style="list-style-type: none"> <li>▪ Listed July 2025 Cumulative Update</li> </ul>
49.0	12 September 2025	<ul style="list-style-type: none"> <li>• Updated MLCL v7.0 Patches section               <ul style="list-style-type: none"> <li>○ For Windows 10 1607/Windows Server 2016                   <ul style="list-style-type: none"> <li>▪ Removed July 2025 Service Stack Update</li> <li>▪ Listed September 2025 Service Stack Update</li> <li>▪ Removed July 2025 Cumulative Update</li> <li>▪ Listed September 2025 Cumulative Update</li> <li>▪ Removed November 2024 SQL Server Cumulative Update</li> <li>▪ Listed July 2025 SQL Server Cumulative Update</li> </ul> </li> <li>○ For Windows 10 1809                   <ul style="list-style-type: none"> <li>▪ Removed July 2025 Cumulative Update</li> <li>▪ Listed September 2025 Cumulative Update</li> <li>▪ Removed November 2024 SQL Server Cumulative Update</li> <li>▪ Listed July 2025 SQL Server Cumulative Update</li> </ul> </li> </ul> </li> </ul>
50.0	25 September 2025	<ul style="list-style-type: none"> <li>• Added notes to MLCL v7.0 Patches section</li> <li>• Added Workarounds for installing Windows Cumulative Updates for Altix / Altix BT21 section</li> </ul>
51.0	07 October 2025	<ul style="list-style-type: none"> <li>• Added Office 2016 End of support section</li> <li>• Added note related to Office 2016 in MLCL v7.0 Patches section</li> </ul>
52.0	29 October 2025	<ul style="list-style-type: none"> <li>• Updated MLCL v7.0 Patches section               <ul style="list-style-type: none"> <li>○ For Windows 10 1607/Windows Server 2016                   <ul style="list-style-type: none"> <li>▪ Removed September 2025 Service Stack Update</li> <li>▪ Listed October 2025 Service Stack Update</li> <li>▪ Removed September 2025 Cumulative Update</li> <li>▪ Listed October 2025 Cumulative Update</li> </ul> </li> <li>○ For Windows 10 1809                   <ul style="list-style-type: none"> <li>▪ Removed September 2025 Cumulative Update</li> <li>▪ Listed October 2025 Cumulative Update</li> </ul> </li> </ul> </li> </ul>
53.0	13 November 2025	<ul style="list-style-type: none"> <li>• Updated document formatting</li> <li>• Updated MLCL v7.0 Patches section               <ul style="list-style-type: none"> <li>○ For Windows 10 1809                   <ul style="list-style-type: none"> <li>▪ Removed October 2025 Cumulative Update</li> <li>▪ Listed November 2025 Cumulative Update</li> </ul> </li> </ul> </li> </ul>

54.0	14 November 2025	<ul style="list-style-type: none"> <li>• Updated Workarounds for installing Windows Cumulative Updates for Altix / Altix BT21 section</li> <li>• Updated MLCL v7.0 Patches section <ul style="list-style-type: none"> <li>○ For Windows 10 1607/Windows Server 2016 <ul style="list-style-type: none"> <li>▪ Removed July 2025 SQL Server Cumulative Update</li> <li>▪ Listed September 2025 SQL Server Cumulative Update</li> </ul> </li> <li>○ For Windows 10 1809 <ul style="list-style-type: none"> <li>▪ Removed July 2025 SQL Server Cumulative Update</li> <li>▪ Listed September 2025 SQL Server Cumulative Update</li> </ul> </li> </ul> </li> </ul>
55.0	12 December 2025	<ul style="list-style-type: none"> <li>• Updated MLCL v7.0 Patches section <ul style="list-style-type: none"> <li>○ For Windows 10 1607/Windows Server 2016 <ul style="list-style-type: none"> <li>▪ Removed October 2025 Service Stack Update</li> <li>▪ Listed November 2025 Service Stack Update</li> <li>▪ Removed October 2025 Cumulative Update</li> <li>▪ Listed December 2025 Cumulative Update</li> </ul> </li> <li>○ For Windows 10 1809 <ul style="list-style-type: none"> <li>▪ Removed November 2025 Cumulative Update</li> <li>▪ Listed December 2025 Cumulative Update</li> </ul> </li> </ul> </li> </ul>
56.0	09 February 2026	<ul style="list-style-type: none"> <li>• Updated MLCL v7.0 Patches section <ul style="list-style-type: none"> <li>○ For Windows 10 1607/Windows Server 2016 <ul style="list-style-type: none"> <li>▪ Removed November 2025 Service Stack Update</li> <li>▪ Listed January 2026 Service Stack Update</li> <li>▪ Removed December 2025 Cumulative Update</li> <li>▪ Listed January 2026 Cumulative Update</li> <li>▪ Listed Office 2016 and Office 2024 Updates</li> </ul> </li> <li>○ For Windows 10 1809 <ul style="list-style-type: none"> <li>▪ Removed December 2025 Cumulative Update</li> <li>▪ Listed January 2026 Cumulative Update</li> <li>▪ Listed Office 2016 and Office 2024 Updates</li> </ul> </li> </ul> </li> <li>• Added section Office 2024 LTSC Update Instructions</li> <li>• Added section Office 2024 LTSC Configuration File</li> </ul>
57.0	13 February 2026	<ul style="list-style-type: none"> <li>• Updated MLCL v7.0 Patches section <ul style="list-style-type: none"> <li>○ For Windows 10 1607/Windows Server 2016 <ul style="list-style-type: none"> <li>▪ Removed January 2026 Service Stack Update</li> <li>▪ Listed February 2026 Service Stack Update</li> </ul> </li> </ul> </li> </ul>

		<ul style="list-style-type: none"> <li>▪ Removed January 2026 Cumulative Update</li> <li>▪ Listed February 2026 Cumulative Update</li> <li>▪ Removed Office 2024 LTSC 17932.20638 Update</li> <li>▪ Listed Office 2024 LTSC 17932.20670 Update</li> <li>○ For Windows 10 1809 <ul style="list-style-type: none"> <li>▪ Removed January 2026 Cumulative Update</li> <li>▪ Listed February 2026 Cumulative Update</li> <li>▪ Removed Office 2024 LTSC 17932.20638 Update</li> <li>▪ Listed Office 2024 LTSC 17932.20670 Update</li> </ul> </li> </ul>
58.0	24 February 2026	<ul style="list-style-type: none"> <li>• Updated MLCL v7.0 Patches section</li> <li>• Removed section DELL 5820 Tower BIOS Update to v2.42.0 Instructions</li> <li>• Added section DELL 5820 Tower BIOS Update to v2.47.0 Instructions</li> <li>• Updated Workarounds for installing Windows Cumulative Updates for Altix / Altix BT21 for clarification (added Note)</li> </ul>
59.0	26 March 2026	<ul style="list-style-type: none"> <li>• Added Requirement of Microsoft Runtime Libraries for Carto licensed systems section.</li> <li>• Updated Office 2016 End of support section.</li> </ul>
60.0	27 April 2026	<ul style="list-style-type: none"> <li>• Updated MLCL v7.0 Patches section <ul style="list-style-type: none"> <li>○ For Windows 10 1607/Windows Server 2016 <ul style="list-style-type: none"> <li>▪ Removed February 2026 Cumulative Update</li> <li>▪ Listed March 2026 Cumulative Update</li> <li>▪ Removed Office 2024 LTSC 17932.20670 Update</li> <li>▪ Listed Office 2024 LTSC 17932.20700 Update</li> <li>▪ Listed Office 2016 Updates</li> </ul> </li> <li>○ For Windows 10 1809 <ul style="list-style-type: none"> <li>▪ Removed February 2026 Cumulative Update</li> <li>▪ Listed March 2026 Cumulative Update</li> <li>▪ Removed Office 2024 LTSC 17932.20670 Update</li> <li>▪ Listed Office 2024 LTSC 17932.20700 Update</li> <li>▪ Listed Office 2016 Updates</li> </ul> </li> </ul> </li> </ul>
61.0	14 May 2026	<ul style="list-style-type: none"> <li>• Updated MLCL v7.0 Patches section <ul style="list-style-type: none"> <li>○ For Windows 10 1607/Windows Server 2016 <ul style="list-style-type: none"> <li>▪ Listed March 2026 SQL Server Cumulative Update</li> <li>▪ Listed Office 2016 Updates</li> </ul> </li> <li>○ For Windows 10 1809</li> </ul> </li> </ul>

		<ul style="list-style-type: none"> <li>▪ Listed March 2026 SQL Server Cumulative Update</li> <li>▪ Listed Office 2016 Updates</li> <li>• Removed section DELL 5820 Tower BIOS Update to v2.47.0 Instructions</li> <li>• Added section DELL 5820 Tower BIOS Update to v2.48.0 Instructions</li> </ul>
62.0	01 June 2026	<ul style="list-style-type: none"> <li>• Updated MLCL v7.0 Patches section <ul style="list-style-type: none"> <li>○ For Windows 10 1607/Windows Server 2016 <ul style="list-style-type: none"> <li>▪ Listed April 2026 Service Stack Update</li> <li>▪ Listed April 2026 Cumulative Update</li> <li>▪ Listed Office 2016 and Office 2024 Updates</li> </ul> </li> <li>○ For Windows 10 1809 <ul style="list-style-type: none"> <li>▪ Listed April 2026 Cumulative Update</li> <li>▪ Listed Office 2016 and Office 2024 Updates</li> <li>▪ Listed .Net Framework Security Updates</li> </ul> </li> </ul> </li> <li>• Updated Office 2024 LTSC Configuration File</li> </ul>
63.0	12 June 2026	<ul style="list-style-type: none"> <li>• Updated MLCL v7.0 Patches section <ul style="list-style-type: none"> <li>○ For Windows 10 1607/Windows Server 2016 <ul style="list-style-type: none"> <li>▪ Listed June 2026 Service Stack Update</li> <li>▪ Listed June 2026 Windows Cumulative Update</li> <li>▪ Listed Office 2016 Security Update</li> </ul> </li> <li>○ For Windows 10 1809 <ul style="list-style-type: none"> <li>▪ Listed June 2026 Windows Cumulative Update</li> <li>▪ Listed Office 2016 Security Update</li> </ul> </li> <li>○ Added note regarding 2023 Secure Boot Certificates</li> </ul> </li> </ul>

## Document layout

The document is structured to show

- How to confirm the version of Mac-Lab/CardioLab/ComboLab application and INW Server is AltiX (v7).
- Requirements for installation of patches
- How to logon to the system
- System type and installation of qualified patches
- Identification of type of Physical Review System
- Installation Paths
- Unqualified patches
- Patch update sections for each of the system type in the environment
- BIOS Update Instructions to update BIOS on acquisition system
- Security patch base configurations

**This document applies to AltiX version only. Please verify that you are running AltiX version using the following procedure before proceeding.**

### **How to confirm the version of Mac-Lab/CardioLab/ComboLab application and INW Server is AltiX (v7)**

1. Launch the Mac-Lab CardioLab application from the acquisition or review system.
2. Select **Help > About Mac-Lab** (or **CardioLab**, as applicable).
3. Verify the version number is **7.0.0**
4. Click **Close**.
5. Close the application.

## Installation of the Security Patches on MLCL systems

### Requirements:

- Updates may be applied at any time other than while the Mac-Lab or CardioLab application is open.
- Updates must be re-applied if the system is re-imaged.
- Updates apply to both networked and standalone systems.
- Best practice is to update all applicable MLCL systems at the site. This document provides list of qualified patches for INW Server (Windows Server 2016), Acquisition (Windows 10) and Review (Windows 10) systems.

## How to Log On to Acquisition/Review/INW Server Systems

Login as user who has administrative privilege to deploy the security patches.

**NOTE: For initial install MLCLTechUser account can be used and for follow up patch install, the site should provide (or use) appropriate account information.**

## System Type and installation of Qualified Patches

Based on system type and hardware, patch installation path for product differs. This section provides an overview of system types and sections that has patch installation details.

An INW network has an INW server, Acquisition system (one or more), GE review/client system (one or more) and SW only review/client systems (one or more).

A standalone environment only has an acquisition system.

- For **INW server** – It is hosted on the virtual server provided by the site. For patches that are applicable to INW server refer to section “[Windows Server 2016 \(INW\)](#)”
- For **Acquisition** system (networked or standalone) – The Physical hardware is **Dell 5820**. There are currently **3 revisions** of this system based on the image that has been applied to it. Refer to section “[Installation Paths](#)” to determine the revision of image the system was configured with and then the appropriate sections “**Windows 10 LTSB 1607 x64 (Acquisition with 2019 Image & DELL 5060 / 5070 Review with 2019 Image)**” or “**Windows 10 LTSB**”

**1607 x64 (Acquisition with 2020/2021 Image & DELL 5060 / 5070 Review with 2020/2021 Image)” or “Windows 10 LTSB 1607 x64 (Acquisition with Revised 2021 Image)”** to install the applicable patches.

- For **GE review** system – There are 3 physical hardware options that are supported Dell 5060/5070/7080. Refer to section “[How to identify the type of Physical Review System](#)” to identify the hardware. Based on the hardware type and image version noted in section “Installation Paths”, refer to the applicable section “**Windows 10 LTSB 1607 x64 (Acquisition with 2019 Image & DELL 5060 / 5070 Review with 2019 Image)” or “Windows 10 LTSB 1607 x64 (Acquisition with 2020/2021 Image & DELL 5060 / 5070 Review with 2020/2021 Image)” or “Windows 10 LTSC 1809 x64 (Dell 7080 Review only)”** below to install the security patches.
- **Software only (SWO)** – Here hardware is provided by the site for Review/client system. Refer to the section “[Software Only Review \(Windows 10 Pro, Windows 10 Enterprise\)](#)” for applicable patches.

## Requirement of Microsoft Runtime Libraries for Carto licensed systems

CartoAgent is dependent on Microsoft Visual C++ Libraries for its functioning.

If any of the below two files are missing, CartoAgent may not work as expected.

- MSVCP110.DLL
- MSVCR110.DLL

Recommended installing Microsoft Visual C++ Redistributable by following below steps,

1. Go to the Microsoft Visual C++ Redistributable download page: [LINK](#)
2. Click Download button, select vcredist\_x64.exe and click Download button, and save the .exe file.
3. Log onto Dell 5820 computer as a user in the Administrators group.
4. Run the downloaded file
5. Close all open windows

## How to identify the type of Physical Review System

On the review system,

- In the Windows search at Taskbar, Type **System Information** and press <Enter>.
- In the **System Information**->System Summary page, check the value in System Model Row to determine the type of Physical Review System.
- For DELL 7080 refer to section [Windows 10 LTSC 1809 x64 \(Dell 7080 Review only\)](#).
- For DELL 5060/5070 refer to [Installation Paths](#) section.

## Installation Paths

**Note:** This section is applicable to DELL 5820 Acquisition, DELL 5060/DELL 5070 Review systems. This section is not applicable to DELL 7080 Review Hardware or INW Server.

Determine which production version you are running by following these steps. This will help you determine which section is applicable for patch installation.

- Log on to MLCL Systems (ACQ - DELL 5820, REV - DELL 5060/DELL 5070) as a user with administrative privileges e.g. Administrator.
- Select Windows Start -> Run and enter Regedit and Enter.
- In Regedit window, navigate to HKEY\_LOCAL\_MACHINE\SOFTWARE\GE Medical Systems.
- Click on GE Medical Systems.
- Double click on Production Version.
- Compare the Value Data with the table below to determine the production version you are running.
- Exit the Regedit dialog.

Acquisition (DELL 5820) Production Version	Patch Installation Section to refer
05302019	<a href="#">2019 Image</a>
05182021	<a href="#">2020/2021 Image</a>
08042021	<a href="#">Revised 2021 Image</a>

<b>Review (DELL 5060, DELL 5070) Production Version</b>	<b>Patch Installation Section to refer</b>
05312019	<a href="#">2019 Image</a>
07212020	<a href="#">2020/2021 Image</a>

## Patch Links

The patches displayed below are qualified on an independent basis and can be installed on a one-by-one basis, although it is recommended that all qualified patches are installed. There are dependencies within the qualified patch list. In the table below, it is recommended the patches are installed in order from top to bottom to ensure all pre-requisites are met for all patches. On occasion the patch dependencies require system reboots which are identified in the table below.

**NOTE:**

- Microsoft may move/remove these patch links at any time without notice. Ideal method for downloading patch is the Microsoft Catalog (<http://catalog.update.microsoft.com>). Most fixes not on Microsoft Download Center will be available from the Microsoft Catalog. If you are unable to obtain a patch, please contact GE Technical Support for further assistance.

It is the responsibility of the Hospital to assure all the qualified patches have been installed on the systems.

### Unqualified Patches MLCL v7.0.0

	INW Server	Acquisition	Software Only and DELL 5060 / 5070 Review	DELL 7080 Review
Operating System Platform	Windows Server 2016	Windows 10 1607 LTSC	Windows 10 1607 LTSC	Windows 10 1809 LTSC
Current Unqualified Vulnerability	None	None	None	None

## MLCL v7.0 Patches

### Note:

- During installation of patches if message box appears requesting system restart. Kindly restart the system.
- Note that there are four types of Review: Software Only Review, DELL 5060, DELL 5070, DELL 7080. Please refer to applicable section for your type of review.
- There are three images for Acquisition DELL 5820 : 2019 Image, 2020/2021 Image and Revised 2021 Image. Please refer to the applicable section.
- There are two images for GE review systems DELL 5060, DELL 5070: 2019 Image and 2020/2021 Image. Please refer to the applicable section.
- There is one image for GE review systems 7080. Please refer to the applicable section.
- Execute the instructions but if prompted that patch already on system or not applicable, acceptable to skip.
- Recommendation: Use Internet Explorer (IE) for Catalog download. If you are using the cart feature to download patches, to see the cart it requires opening another tab or new window for <http://catalog.update.microsoft.com>
- Distribution of qualified OS patches using WSUS or SCCM is supported. SCCM is acceptable for centrally managing Windows Defender on ML/CL systems

## 2019 Image ACQ and 2019 Image DELL 5060/5070 Review

### Windows 10 LTSB 1607 x64 (Acquisition with 2019 Image & DELL 5060 / 5070 Review with 2019 Image)

**Note:** In case of Windows Cumulative Update failures, customer to reach out to Microsoft Support.

- For 2023 Secure Boot Certificates,
  - In Acquisition System - Customer to install qualified BIOS mentioned in Other Security Updates section prior to installing Windows Cumulative Update
  - In Review Workstation - Customer to install latest BIOS prior to installing Windows Cumulative Update

KB	Link	Notes (Applicable Patches. Patches to be applied in the order listed.)
KB5094141	<a href="https://www.catalog.update.microsoft.com/Search.aspx?q=KB5094141">https://www.catalog.update.microsoft.com/Search.aspx?q=KB5094141</a>	Install "2026-06 Servicing Stack Update for Windows 10 Version 1607 for x64-based Systems (KB5094141)"
KB5094122	<a href="https://www.catalog.update.microsoft.com/Search.aspx?q=KB5094122">https://www.catalog.update.microsoft.com/Search.aspx?q=KB5094122</a>	Install "2026-06 Cumulative Update for Windows 10 Version 1607 for x64-based Systems (KB5094122)"
KB4494175	<a href="https://www.catalog.update.microsoft.com/Search.aspx?q=KB4494175">https://www.catalog.update.microsoft.com/Search.aspx?q=KB4494175</a>	Install "2019-08 Update for Windows 10 Version 1607 for x64-based Systems (KB4494175)"

### SQL Server 2017 Security Updates

KB5077471	<a href="https://www.catalog.update.microsoft.com/Search.aspx?q=KB5077471">https://www.catalog.update.microsoft.com/Search.aspx?q=KB5077471</a>	Install “Security Update for SQL Server 2017 RTM CU (KB5077471)”
<b>Office 2024 Updates</b> <b>Note:</b> <b>Office 2024 Updates are only applicable on systems where Office 2024 is installed.</b>		
Office 2024 LTSC 17932.20790 Update	Not Applicable	Refer Office 2024 LTSC Update Instructions
<b>Office 2016 Security Updates</b> <b>Note:</b> <ul style="list-style-type: none"> <li>• <b>Office 2016 Security Patches are only applicable on systems where Office 2016 is installed.</b></li> <li>• <b>Microsoft will no longer provide technical support, bug fixes, or security fixes for Office 2016 vulnerabilities after October 14, 2025. For more details refer <a href="#">Office 2016 End of support</a> section.</b></li> </ul>		
KB5001948	<a href="https://www.microsoft.com/en-us/download/details.aspx?id=103135">https://www.microsoft.com/en-us/download/details.aspx?id=103135</a>	Update for Microsoft Office 2016 (KB5001948) 64-Bit Edition
KB4504745	<a href="https://www.microsoft.com/en-us/download/details.aspx?id=103754">https://www.microsoft.com/en-us/download/details.aspx?id=103754</a>	Install “Security Update for Microsoft Office 2016 (KB4504745) 64-Bit Edition”
KB5002115	<a href="https://www.microsoft.com/en-us/download/details.aspx?id=103845">https://www.microsoft.com/en-us/download/details.aspx?id=103845</a>	Install “Security Update for Microsoft Office 2016 (KB5002115) 64-Bit Edition”
KB4484103	<a href="https://www.microsoft.com/en-us/download/details.aspx?id=103431">https://www.microsoft.com/en-us/download/details.aspx?id=103431</a>	Install “Security Update for Microsoft Office 2016 (KB4484103) 64-Bit Edition”
KB5002112	<a href="https://www.microsoft.com/en-us/download/details.aspx?id=104381">https://www.microsoft.com/en-us/download/details.aspx?id=104381</a>	Install “Security Update for Microsoft Office 2016 (KB5002112) 64-Bit Edition”
KB5002026	<a href="https://www.microsoft.com/en-us/download/details.aspx?id=104666">https://www.microsoft.com/en-us/download/details.aspx?id=104666</a>	Install “Security Update for Microsoft Office 2016 (KB5002026) 64-Bit Edition”
KB4462148	<a href="https://www.microsoft.com/en-us/download/details.aspx?id=104457">https://www.microsoft.com/en-us/download/details.aspx?id=104457</a>	Install “Security Update for Microsoft Office 2016 (KB4462148) 64-Bit Edition”
KB5002052	<a href="https://www.microsoft.com/en-us/download/details.aspx?id=103826">https://www.microsoft.com/en-us/download/details.aspx?id=103826</a>	Install “Security Update for Microsoft Office 2016 (KB5002052) 64-Bit Edition”
KB4493154	<a href="https://www.microsoft.com/en-us/download/details.aspx?id=105373">https://www.microsoft.com/en-us/download/details.aspx?id=105373</a>	Install “Security Update for Microsoft Office 2016 (KB4493154) 64-Bit Edition”
KB4475581	<a href="https://www.microsoft.com/en-us/download/details.aspx?id=105356">https://www.microsoft.com/en-us/download/details.aspx?id=105356</a>	Install “Security Update for Microsoft Office 2016 (KB4475581) 64-Bit Edition”

KB5002058	<a href="https://www.microsoft.com/en-us/download/details.aspx?id=105325">https://www.microsoft.com/en-us/download/details.aspx?id=105325</a>	Install "Security Update for Microsoft Office 2016 (KB5002058) 64-Bit Edition"
KB5002620	<a href="https://www.microsoft.com/en-us/download/details.aspx?id=106141">https://www.microsoft.com/en-us/download/details.aspx?id=106141</a>	Install "Security Update for Microsoft Office 2016 (KB5002620) 64-Bit Edition"
KB5002766	<a href="https://www.microsoft.com/en-us/download/details.aspx?id=108357&amp;msockid=367ed609577a663b1497c3b056c867a9">https://www.microsoft.com/en-us/download/details.aspx?id=108357&amp;msockid=367ed609577a663b1497c3b056c867a9</a>	Install "Security Update for Microsoft Office 2016 (KB5002766)"
KB5002790	<a href="https://www.microsoft.com/en-us/download/details.aspx?id=108416&amp;msockid=367ed609577a663b1497c3b056c867a9">https://www.microsoft.com/en-us/download/details.aspx?id=108416&amp;msockid=367ed609577a663b1497c3b056c867a9</a>	Install "Security Update for Microsoft PowerPoint 2016 (KB5002790)"
KB5002762	<a href="https://www.microsoft.com/en-us/download/details.aspx?id=108356&amp;msockid=367ed609577a663b1497c3b056c867a9">https://www.microsoft.com/en-us/download/details.aspx?id=108356&amp;msockid=367ed609577a663b1497c3b056c867a9</a>	Install "Security Update for Microsoft Office 2016 (KB5002762)"
KB5002818	<a href="https://www.microsoft.com/en-us/download/details.aspx?id=108490&amp;msockid=367ed609577a663b1497c3b056c867a9">https://www.microsoft.com/en-us/download/details.aspx?id=108490&amp;msockid=367ed609577a663b1497c3b056c867a9</a>	Install "Security Update for Microsoft Office 2016 (KB5002818)"
KB5002713	<a href="https://www.microsoft.com/en-us/download/details.aspx?id=108535">https://www.microsoft.com/en-us/download/details.aspx?id=108535</a>	Install "Security Update for Microsoft Office 2016 (KB5002713)"
KB5002866	<a href="https://www.microsoft.com/en-us/download/details.aspx?id=108647&amp;msockid=367ed609577a663b1497c3b056c867a9">https://www.microsoft.com/en-us/download/details.aspx?id=108647&amp;msockid=367ed609577a663b1497c3b056c867a9</a>	Install "Security Update for Microsoft Office 2016 (KB5002866)"
KB5002858	<a href="https://www.microsoft.com/en-us/download/details.aspx?id=108649">https://www.microsoft.com/en-us/download/details.aspx?id=108649</a>	Install "Security Update for Microsoft Word 2016 (KB5002858)"
KB5002849	<a href="https://www.microsoft.com/en-us/download/details.aspx?id=108578&amp;msockid=367ed609577a663b1497c3b056c867a9">https://www.microsoft.com/en-us/download/details.aspx?id=108578&amp;msockid=367ed609577a663b1497c3b056c867a9</a>	Install "Security Update for Microsoft Excel 2016 (KB5002849)"
KB5002718	<a href="https://www.microsoft.com/en-us/download/details.aspx?id=108577&amp;msockid=367ed609577a663b1497c3b056c867a9">https://www.microsoft.com/en-us/download/details.aspx?id=108577&amp;msockid=367ed609577a663b1497c3b056c867a9</a>	Install "Security Update for Microsoft Office 2016 (KB5002718)"
<b>Other Security Updates</b>		
DELL BIOS UPDATE 2.48.0 (ACQ ONLY)	Not Applicable	Refer DELL 5820 Tower BIOS Update to v2.48.0 Instructions

Disable RC4 and 3DES Cipher	Not Applicable	Refer Disabling RC4 and 3DES Cipher for resolving Sweet32 OpenSSL Vulnerability (CVE-2016-2183) section.
Enforce WinVerifyTrust Signature Validation (CVE-2013-3900)	Not Applicable	Refer Enforce WinVerifyTrust Signature Validation (CVE-2013-3900) section
OPTIONAL - Windows Speculative Execution Configuration Check	Not Applicable	Refer OPTIONAL - Windows Speculative Execution Configuration Check section

## 2020/2021 Image ACQ and 2020/2021 Image DELL 5060/5070 Review

### Windows 10 LTSB 1607 x64 (Acquisition with 2020/2021 Image & DELL 5060 / 5070 Review with 2020/2021 Image)

**Note:** In case of Windows Cumulative Update failures, customer to reach out to Microsoft Support.

- For 2023 Secure Boot Certificates,
  - In Acquisition System - Customer to install qualified BIOS mentioned in Other Security Updates section prior to installing Windows Cumulative Update
  - In Review Workstation - Customer to install latest BIOS prior to installing Windows Cumulative Update

KB	Link	Notes (Applicable Patches. Patches to be applied in the order listed.)
KB5094141	<a href="https://www.catalog.update.microsoft.com/Search.aspx?q=KB5094141">https://www.catalog.update.microsoft.com/Search.aspx?q=KB5094141</a>	Install “2026-06 Servicing Stack Update for Windows 10 Version 1607 for x64-based Systems (KB5094141)”
KB5094122	<a href="https://www.catalog.update.microsoft.com/Search.aspx?q=KB5094122">https://www.catalog.update.microsoft.com/Search.aspx?q=KB5094122</a>	Install “2026-06 Cumulative Update for Windows 10 Version 1607 for x64-based Systems (KB5094122)”
<b>SQL Server 2017 Security Updates</b>		

KB5077471	<a href="https://www.catalog.update.microsoft.com/Search.aspx?q=KB5077471">https://www.catalog.update.microsoft.com/Search.aspx?q=KB5077471</a>	Install “Security Update for SQL Server 2017 RTM CU (KB5077471)”
<b>Office 2024 Updates</b> <b>Note:</b> <b>Office 2024 Updates are only applicable on systems where Office 2024 is installed.</b>		
Office 2024 LTSC 17932.20790 Update	Not Applicable	Refer Office 2024 LTSC Update Instructions
<b>Office 2016 Security Updates</b> <b>Note:</b> <ul style="list-style-type: none"> <li>• <b>Office 2016 Security Patches are only applicable on systems where Office 2016 is installed.</b></li> <li>• <b>Microsoft will no longer provide technical support, bug fixes, or security fixes for Office 2016 vulnerabilities after October 14, 2025. For more details refer <a href="#">Office 2016 End of support</a> section.</b></li> </ul>		
KB5001948	<a href="https://www.microsoft.com/en-us/download/details.aspx?id=103135">https://www.microsoft.com/en-us/download/details.aspx?id=103135</a>	Update for Microsoft Office 2016 (KB5001948) 64-Bit Edition
KB4504745	<a href="https://www.microsoft.com/en-us/download/details.aspx?id=103754">https://www.microsoft.com/en-us/download/details.aspx?id=103754</a>	Install “Security Update for Microsoft Office 2016 (KB4504745) 64-Bit Edition”
KB5002115	<a href="https://www.microsoft.com/en-us/download/details.aspx?id=103845">https://www.microsoft.com/en-us/download/details.aspx?id=103845</a>	Install “Security Update for Microsoft Office 2016 (KB5002115) 64-Bit Edition”
KB4484103	<a href="https://www.microsoft.com/en-us/download/details.aspx?id=103431">https://www.microsoft.com/en-us/download/details.aspx?id=103431</a>	Install “Security Update for Microsoft Office 2016 (KB4484103) 64-Bit Edition”
KB5002112	<a href="https://www.microsoft.com/en-us/download/details.aspx?id=104381">https://www.microsoft.com/en-us/download/details.aspx?id=104381</a>	Install “Security Update for Microsoft Office 2016 (KB5002112) 64-Bit Edition”
KB5002026	<a href="https://www.microsoft.com/en-us/download/details.aspx?id=104666">https://www.microsoft.com/en-us/download/details.aspx?id=104666</a>	Install “Security Update for Microsoft Office 2016 (KB5002026) 64-Bit Edition”
KB4462148	<a href="https://www.microsoft.com/en-us/download/details.aspx?id=104457">https://www.microsoft.com/en-us/download/details.aspx?id=104457</a>	Install “Security Update for Microsoft Office 2016 (KB4462148) 64-Bit Edition”
KB5002052	<a href="https://www.microsoft.com/en-us/download/details.aspx?id=103826">https://www.microsoft.com/en-us/download/details.aspx?id=103826</a>	Install “Security Update for Microsoft Office 2016 (KB5002052) 64-Bit Edition”
KB4493154	<a href="https://www.microsoft.com/en-us/download/details.aspx?id=105373">https://www.microsoft.com/en-us/download/details.aspx?id=105373</a>	Install “Security Update for Microsoft Office 2016 (KB4493154) 64-Bit Edition”
KB4475581	<a href="https://www.microsoft.com/en-us/download/details.aspx?id=105356">https://www.microsoft.com/en-us/download/details.aspx?id=105356</a>	Install “Security Update for Microsoft Office 2016 (KB4475581) 64-Bit Edition”

KB5002058	<a href="https://www.microsoft.com/en-us/download/details.aspx?id=105325">https://www.microsoft.com/en-us/download/details.aspx?id=105325</a>	Install "Security Update for Microsoft Office 2016 (KB5002058) 64-Bit Edition"
KB5002620	<a href="https://www.microsoft.com/en-us/download/details.aspx?id=106141">https://www.microsoft.com/en-us/download/details.aspx?id=106141</a>	Install "Security Update for Microsoft Office 2016 (KB5002620) 64-Bit Edition"
KB5002766	<a href="https://www.microsoft.com/en-us/download/details.aspx?id=108357&amp;msockid=367ed609577a663b1497c3b056c867a9">https://www.microsoft.com/en-us/download/details.aspx?id=108357&amp;msockid=367ed609577a663b1497c3b056c867a9</a>	Install "Security Update for Microsoft Office 2016 (KB5002766)"
KB5002790	<a href="https://www.microsoft.com/en-us/download/details.aspx?id=108416&amp;msockid=367ed609577a663b1497c3b056c867a9">https://www.microsoft.com/en-us/download/details.aspx?id=108416&amp;msockid=367ed609577a663b1497c3b056c867a9</a>	Install "Security Update for Microsoft PowerPoint 2016 (KB5002790)"
KB5002762	<a href="https://www.microsoft.com/en-us/download/details.aspx?id=108356&amp;msockid=367ed609577a663b1497c3b056c867a9">https://www.microsoft.com/en-us/download/details.aspx?id=108356&amp;msockid=367ed609577a663b1497c3b056c867a9</a>	Install "Security Update for Microsoft Office 2016 (KB5002762)"
KB5002818	<a href="https://www.microsoft.com/en-us/download/details.aspx?id=108490&amp;msockid=367ed609577a663b1497c3b056c867a9">https://www.microsoft.com/en-us/download/details.aspx?id=108490&amp;msockid=367ed609577a663b1497c3b056c867a9</a>	Install "Security Update for Microsoft Office 2016 (KB5002818)"
KB5002713	<a href="https://www.microsoft.com/en-us/download/details.aspx?id=108535">https://www.microsoft.com/en-us/download/details.aspx?id=108535</a>	Install "Security Update for Microsoft Office 2016 (KB5002713)"
KB5002866	<a href="https://www.microsoft.com/en-us/download/details.aspx?id=108647&amp;msockid=367ed609577a663b1497c3b056c867a9">https://www.microsoft.com/en-us/download/details.aspx?id=108647&amp;msockid=367ed609577a663b1497c3b056c867a9</a>	Install "Security Update for Microsoft Office 2016 (KB5002866)"
KB5002858	<a href="https://www.microsoft.com/en-us/download/details.aspx?id=108649">https://www.microsoft.com/en-us/download/details.aspx?id=108649</a>	Install "Security Update for Microsoft Word 2016 (KB5002858)"
KB5002849	<a href="https://www.microsoft.com/en-us/download/details.aspx?id=108578&amp;msockid=367ed609577a663b1497c3b056c867a9">https://www.microsoft.com/en-us/download/details.aspx?id=108578&amp;msockid=367ed609577a663b1497c3b056c867a9</a>	Install "Security Update for Microsoft Excel 2016 (KB5002849)"
KB5002718	<a href="https://www.microsoft.com/en-us/download/details.aspx?id=108577&amp;msockid=367ed609577a663b1497c3b056c867a9">https://www.microsoft.com/en-us/download/details.aspx?id=108577&amp;msockid=367ed609577a663b1497c3b056c867a9</a>	Install "Security Update for Microsoft Office 2016 (KB5002718)"
<b>Other Security Updates</b>		
DELL BIOS UPDATE 2.48.0 (ACQ ONLY)	Not Applicable	Refer DELL 5820 Tower BIOS Update to v2.48.0 Instructions

Disable RC4 and 3DES Cipher	Not Applicable	Refer Disabling RC4 and 3DES Cipher for resolving Sweet32 OpenSSL Vulnerability (CVE-2016-2183) section.
Enforce WinVerifyTrust Signature Validation (CVE-2013-3900)	Not Applicable	Refer Enforce WinVerifyTrust Signature Validation (CVE-2013-3900) section
OPTIONAL - Windows Speculative Execution Configuration Check	Not Applicable	Refer OPTIONAL - Windows Speculative Execution Configuration Check section

## Revised 2021 Image ACQ

### Windows 10 LTSC 1607 x64 (Acquisition with Revised 2021 Image)

**Note:** In case of Windows Cumulative Update failures, customer to reach out to Microsoft Support.

- For 2023 Secure Boot Certificates, customer to install qualified BIOS mentioned in Other Security Updates section prior to installing Windows Cumulative Update

KB	Link	Notes (Applicable Patches. Patches to be applied in the order listed.)
KB5094141	<a href="https://www.catalog.update.microsoft.com/Search.aspx?q=KB5094141">https://www.catalog.update.microsoft.com/Search.aspx?q=KB5094141</a> <a href="#">1</a>	Install “2026-06 Servicing Stack Update for Windows 10 Version 1607 for x64-based Systems (KB5094141)”
KB5094122	<a href="https://www.catalog.update.microsoft.com/Search.aspx?q=KB5094122">https://www.catalog.update.microsoft.com/Search.aspx?q=KB5094122</a> <a href="#">2</a>	Install “2026-06 Cumulative Update for Windows 10 Version 1607 for x64-based Systems (KB5094122)”
<b>SQL Server 2017 Security Updates</b>		
KB5077471	<a href="https://www.catalog.update.microsoft.com/Search.aspx?q=KB5077471">https://www.catalog.update.microsoft.com/Search.aspx?q=KB5077471</a> <a href="#">1</a>	Install “Security Update for SQL Server 2017 RTM CU (KB5077471)”

<b>Office 2024 Updates</b>		
<b>Note:</b>		
<b>Office 2024 Updates are only applicable on systems where Office 2024 is installed.</b>		
Office 2024 LTSC 17932.20790 Update	Not Applicable	Refer Office 2024 LTSC Update Instructions
<b>Office 2016 Security Updates</b>		
<b>Note:</b>		
<ul style="list-style-type: none"> <li>• <b>Office 2016 Security Patches are only applicable on systems where Office 2016 is installed.</b></li> <li>• <b>Microsoft will no longer provide technical support, bug fixes, or security fixes for Office 2016 vulnerabilities after October 14, 2025. For more details refer <a href="#">Office 2016 End of support</a> section.</b></li> </ul>		
KB4504745	<a href="https://www.microsoft.com/en-us/download/details.aspx?id=103754">https://www.microsoft.com/en-us/download/details.aspx?id=103754</a>	Install “Security Update for Microsoft Office 2016 (KB4504745) 64-Bit Edition”
KB5002115	<a href="https://www.microsoft.com/en-us/download/details.aspx?id=103845">https://www.microsoft.com/en-us/download/details.aspx?id=103845</a>	Install “Security Update for Microsoft Office 2016 (KB5002115) 64-Bit Edition”
KB4484103	<a href="https://www.microsoft.com/en-us/download/details.aspx?id=103431">https://www.microsoft.com/en-us/download/details.aspx?id=103431</a>	Install “Security Update for Microsoft Office 2016 (KB4484103) 64-Bit Edition”
KB5002112	<a href="https://www.microsoft.com/en-us/download/details.aspx?id=104381">https://www.microsoft.com/en-us/download/details.aspx?id=104381</a>	Install “Security Update for Microsoft Office 2016 (KB5002112) 64-Bit Edition”
KB5002026	<a href="https://www.microsoft.com/en-us/download/details.aspx?id=104666">https://www.microsoft.com/en-us/download/details.aspx?id=104666</a>	Install “Security Update for Microsoft Office 2016 (KB5002026) 64-Bit Edition”
KB4462148	<a href="https://www.microsoft.com/en-us/download/details.aspx?id=104457">https://www.microsoft.com/en-us/download/details.aspx?id=104457</a>	Install “Security Update for Microsoft Office 2016 (KB4462148) 64-Bit Edition”
KB5002052	<a href="https://www.microsoft.com/en-us/download/details.aspx?id=103826">https://www.microsoft.com/en-us/download/details.aspx?id=103826</a>	Install “Security Update for Microsoft Office 2016 (KB5002052) 64-Bit Edition”
KB4493154	<a href="https://www.microsoft.com/en-us/download/details.aspx?id=105373">https://www.microsoft.com/en-us/download/details.aspx?id=105373</a>	Install “Security Update for Microsoft Office 2016 (KB4493154) 64-Bit Edition”
KB4475581	<a href="https://www.microsoft.com/en-us/download/details.aspx?id=105356">https://www.microsoft.com/en-us/download/details.aspx?id=105356</a>	Install “Security Update for Microsoft Office 2016 (KB4475581) 64-Bit Edition”
KB5002058	<a href="https://www.microsoft.com/en-us/download/details.aspx?id=105325">https://www.microsoft.com/en-us/download/details.aspx?id=105325</a>	Install “Security Update for Microsoft Office 2016 (KB5002058) 64-Bit Edition”
KB5002620	<a href="https://www.microsoft.com/en-us/download/details.aspx?id=106141">https://www.microsoft.com/en-us/download/details.aspx?id=106141</a>	Install “Security Update for Microsoft Office 2016 (KB5002620) 64-Bit Edition”

KB5002766	<a href="https://www.microsoft.com/en-us/download/details.aspx?id=108357&amp;msockid=367ed609577a663b1497c3b056c867a9">https://www.microsoft.com/en-us/download/details.aspx?id=108357&amp;msockid=367ed609577a663b1497c3b056c867a9</a>	Install "Security Update for Microsoft Office 2016 (KB5002766)"
KB5002790	<a href="https://www.microsoft.com/en-us/download/details.aspx?id=108416&amp;msockid=367ed609577a663b1497c3b056c867a9">https://www.microsoft.com/en-us/download/details.aspx?id=108416&amp;msockid=367ed609577a663b1497c3b056c867a9</a>	Install "Security Update for Microsoft PowerPoint 2016 (KB5002790)"
KB5002762	<a href="https://www.microsoft.com/en-us/download/details.aspx?id=108356&amp;msockid=367ed609577a663b1497c3b056c867a9">https://www.microsoft.com/en-us/download/details.aspx?id=108356&amp;msockid=367ed609577a663b1497c3b056c867a9</a>	Install "Security Update for Microsoft Office 2016 (KB5002762)"
KB5002818	<a href="https://www.microsoft.com/en-us/download/details.aspx?id=108490&amp;msockid=367ed609577a663b1497c3b056c867a9">https://www.microsoft.com/en-us/download/details.aspx?id=108490&amp;msockid=367ed609577a663b1497c3b056c867a9</a>	Install "Security Update for Microsoft Office 2016 (KB5002818)"
KB5002713	<a href="https://www.microsoft.com/en-us/download/details.aspx?id=108535">https://www.microsoft.com/en-us/download/details.aspx?id=108535</a>	Install "Security Update for Microsoft Office 2016 (KB5002713)"
KB5002866	<a href="https://www.microsoft.com/en-us/download/details.aspx?id=108647&amp;msockid=367ed609577a663b1497c3b056c867a9">https://www.microsoft.com/en-us/download/details.aspx?id=108647&amp;msockid=367ed609577a663b1497c3b056c867a9</a>	Install "Security Update for Microsoft Office 2016 (KB5002866)"
KB5002858	<a href="https://www.microsoft.com/en-us/download/details.aspx?id=108649">https://www.microsoft.com/en-us/download/details.aspx?id=108649</a>	Install "Security Update for Microsoft Word 2016 (KB5002858)"
KB5002849	<a href="https://www.microsoft.com/en-us/download/details.aspx?id=108578&amp;msockid=367ed609577a663b1497c3b056c867a9">https://www.microsoft.com/en-us/download/details.aspx?id=108578&amp;msockid=367ed609577a663b1497c3b056c867a9</a>	Install "Security Update for Microsoft Excel 2016 (KB5002849)"
KB5002718	<a href="https://www.microsoft.com/en-us/download/details.aspx?id=108577&amp;msockid=367ed609577a663b1497c3b056c867a9">https://www.microsoft.com/en-us/download/details.aspx?id=108577&amp;msockid=367ed609577a663b1497c3b056c867a9</a>	Install "Security Update for Microsoft Office 2016 (KB5002718)"
<b>Other Security Updates</b>		
DELL BIOS UPDATE 2.48.0 (ACQ ONLY)	Not Applicable	Refer DELL 5820 Tower BIOS Update to v2.48.0 Instructions
Disable RC4 and 3DES Cipher	Not Applicable	Refer Disabling RC4 and 3DES Cipher for resolving Sweet32 OpenSSL Vulnerability (CVE-2016-2183) section.

Enforce WinVerifyTrust Signature Validation (CVE-2013-3900)	Not Applicable	Refer Enforce WinVerifyTrust Signature Validation (CVE-2013-3900) section
OPTIONAL - Windows Speculative Execution Configuration Check	Not Applicable	Refer OPTIONAL - Windows Speculative Execution Configuration Check section

## Windows Server 2016 (INW)

<b>Windows Server 2016 (INW)</b> <b>Note:</b> In case of Windows Cumulative Update failures, customer to reach out to Microsoft Support.		
KB	Link	Notes (Applicable Patches. Patches to be applied in the order listed.)
KB5094141	<a href="https://www.catalog.update.microsoft.com/Search.aspx?q=KB5094141">https://www.catalog.update.microsoft.com/Search.aspx?q=KB5094141</a>	Install “2026-06 Servicing Stack Update for Windows Server 2016 for x64-based Systems (KB5094141)”
KB5094122	<a href="https://www.catalog.update.microsoft.com/Search.aspx?q=KB5094122">https://www.catalog.update.microsoft.com/Search.aspx?q=KB5094122</a>	Install “2026-06 Cumulative Update for Windows Server 2016 for x64-based Systems (KB5094122)”  <b>Note:</b> In case of Windows Cumulative Update failure, retry installation by following <a href="#">Workarounds for installing Windows Cumulative Updates for Altix / Altix BT21 section.</a>
<b>SQL Server 2017 Security Updates</b>		
KB5077471	<a href="https://www.catalog.update.microsoft.com/Search.aspx?q=KB5077471">https://www.catalog.update.microsoft.com/Search.aspx?q=KB5077471</a>	Install “Security Update for SQL Server 2017 RTM CU (KB5077471)”

<b>Other Security Updates</b>		
Disable RC4 and 3DES Cipher	Not Applicable	Refer Disabling RC4 and 3DES Cipher for resolving Sweet32 OpenSSL Vulnerability (CVE-2016-2183) section.
Enforce WinVerifyTrust Signature Validation (CVE-2013-3900)	Not Applicable	Refer Enforce WinVerifyTrust Signature Validation (CVE-2013-3900) section
OPTIONAL - Windows Speculative Execution Configuration Check	Not Applicable	Refer OPTIONAL - Windows Speculative Execution Configuration Check section
Fix for Microsoft Browser Information Disclosure	Not Applicable	Refer Fix for Microsoft Browser Information Disclosure Vulnerability (CVE-2017-8529) section

## Dell 7080 Review only

<b>Windows 10 LTSC 1809 x64 (Dell 7080 Review only)</b>		
<p><b>Note:</b> In case of Windows Cumulative Update failures, customer to reach out to Microsoft Support.</p> <ul style="list-style-type: none"> <li>➤ For 2023 Secure Boot Certificates, customer to install latest BIOS prior to installing Windows Cumulative Update</li> </ul>		
<b>KB</b>	<b>Link</b>	<b>Notes (Applicable Patches. Patches to be applied in the order listed.)</b>
KB5005112	<a href="https://www.catalog.update.microsoft.com/Search.aspx?q=KB5005112">https://www.catalog.update.microsoft.com/Search.aspx?q=KB5005112</a>	Install “2021-08 Servicing Stack Update for Windows 10 Version 1809 for x64-based Systems (KB5005112)”

KB5094123	<a href="https://www.catalog.update.microsoft.com/Search.aspx?q=KB5094123">https://www.catalog.update.microsoft.com/Search.aspx?q=KB5094123</a>	Install “2026-06 Cumulative Update for Windows 10 Version 1809 for x64-based Systems (KB5094123)”  <b>Note:</b> In case of Windows Cumulative Update failure, retry installation by following <a href="#">Workarounds for installing Windows Cumulative Updates for Altix / Altix BT21 section</a> .
<b>SQL Server 2017 Security Updates</b>		
KB5077471	<a href="https://www.catalog.update.microsoft.com/Search.aspx?q=KB5077471">https://www.catalog.update.microsoft.com/Search.aspx?q=KB5077471</a>	Install “Security Update for SQL Server 2017 RTM CU (KB5077471)”
<b>Office 2024 Updates</b>		
<b>Note:</b> <b>Office 2024 Updates are only applicable on systems where Office 2024 is installed.</b>		
Office 2024 LTSC 17932.20790 Update	Not Applicable	Refer Office 2024 LTSC Update Instructions
<b>Office 2016 Security Updates</b>		
<b>Note:</b>		
<ul style="list-style-type: none"> <li>• <b>Office 2016 Security Patches are only applicable on systems where Office 2016 is installed.</b></li> <li>• <b>Microsoft will no longer provide technical support, bug fixes, or security fixes for Office 2016 vulnerabilities after October 14, 2025. For more details refer <a href="#">Office 2016 End of support</a> section.</b></li> </ul>		
KB5001948	<a href="https://www.microsoft.com/en-us/download/details.aspx?id=103135">https://www.microsoft.com/en-us/download/details.aspx?id=103135</a>	Update for Microsoft Office 2016 (KB5001948) 64-Bit Edition
KB4504745	<a href="https://www.microsoft.com/en-us/download/details.aspx?id=103754">https://www.microsoft.com/en-us/download/details.aspx?id=103754</a>	Install “Security Update for Microsoft Office 2016 (KB4504745) 64-Bit Edition”
KB5002115	<a href="https://www.microsoft.com/en-us/download/details.aspx?id=103845">https://www.microsoft.com/en-us/download/details.aspx?id=103845</a>	Install “Security Update for Microsoft Office 2016 (KB5002115) 64-Bit Edition”
KB4484103	<a href="https://www.microsoft.com/en-us/download/details.aspx?id=103431">https://www.microsoft.com/en-us/download/details.aspx?id=103431</a>	Install “Security Update for Microsoft Office 2016 (KB4484103) 64-Bit Edition”
KB5002112	<a href="https://www.microsoft.com/en-us/download/details.aspx?id=104381">https://www.microsoft.com/en-us/download/details.aspx?id=104381</a>	Install “Security Update for Microsoft Office 2016 (KB5002112) 64-Bit Edition”
KB5002026	<a href="https://www.microsoft.com/en-us/download/details.aspx?id=104666">https://www.microsoft.com/en-us/download/details.aspx?id=104666</a>	Install “Security Update for Microsoft Office 2016 (KB5002026) 64-Bit Edition”

KB4462148	<a href="https://www.microsoft.com/en-us/download/details.aspx?id=104457">https://www.microsoft.com/en-us/download/details.aspx?id=104457</a>	Install "Security Update for Microsoft Office 2016 (KB4462148) 64-Bit Edition"
KB5002052	<a href="https://www.microsoft.com/en-us/download/details.aspx?id=103826">https://www.microsoft.com/en-us/download/details.aspx?id=103826</a>	Install "Security Update for Microsoft Office 2016 (KB5002052) 64-Bit Edition"
KB4493154	<a href="https://www.microsoft.com/en-us/download/details.aspx?id=105373">https://www.microsoft.com/en-us/download/details.aspx?id=105373</a>	Install "Security Update for Microsoft Office 2016 (KB4493154) 64-Bit Edition"
KB4475581	<a href="https://www.microsoft.com/en-us/download/details.aspx?id=105356">https://www.microsoft.com/en-us/download/details.aspx?id=105356</a>	Install "Security Update for Microsoft Office 2016 (KB4475581) 64-Bit Edition"
KB5002058	<a href="https://www.microsoft.com/en-us/download/details.aspx?id=105325">https://www.microsoft.com/en-us/download/details.aspx?id=105325</a>	Install "Security Update for Microsoft Office 2016 (KB5002058) 64-Bit Edition"
KB5002620	<a href="https://www.microsoft.com/en-us/download/details.aspx?id=106141">https://www.microsoft.com/en-us/download/details.aspx?id=106141</a>	Install "Security Update for Microsoft Office 2016 (KB5002620) 64-Bit Edition"
KB5002766	<a href="https://www.microsoft.com/en-us/download/details.aspx?id=108357&amp;msockid=367ed609577a663b1497c3b056c867a9">https://www.microsoft.com/en-us/download/details.aspx?id=108357&amp;msockid=367ed609577a663b1497c3b056c867a9</a>	Install "Security Update for Microsoft Office 2016 (KB5002766)"
KB5002790	<a href="https://www.microsoft.com/en-us/download/details.aspx?id=108416&amp;msockid=367ed609577a663b1497c3b056c867a9">https://www.microsoft.com/en-us/download/details.aspx?id=108416&amp;msockid=367ed609577a663b1497c3b056c867a9</a>	Install "Security Update for Microsoft PowerPoint 2016 (KB5002790)"
KB5002762	<a href="https://www.microsoft.com/en-us/download/details.aspx?id=108356&amp;msockid=367ed609577a663b1497c3b056c867a9">https://www.microsoft.com/en-us/download/details.aspx?id=108356&amp;msockid=367ed609577a663b1497c3b056c867a9</a>	Install "Security Update for Microsoft Office 2016 (KB5002762)"
KB5002818	<a href="https://www.microsoft.com/en-us/download/details.aspx?id=108490&amp;msockid=367ed609577a663b1497c3b056c867a9">https://www.microsoft.com/en-us/download/details.aspx?id=108490&amp;msockid=367ed609577a663b1497c3b056c867a9</a>	Install "Security Update for Microsoft Office 2016 (KB5002818)"
KB5002713	<a href="https://www.microsoft.com/en-us/download/details.aspx?id=108535">https://www.microsoft.com/en-us/download/details.aspx?id=108535</a>	Install "Security Update for Microsoft Office 2016 (KB5002713)"
KB5002866	<a href="https://www.microsoft.com/en-us/download/details.aspx?id=108647&amp;msockid=367ed609577a663b1497c3b056c867a9">https://www.microsoft.com/en-us/download/details.aspx?id=108647&amp;msockid=367ed609577a663b1497c3b056c867a9</a>	Install "Security Update for Microsoft Office 2016 (KB5002866)"
KB5002858	<a href="https://www.microsoft.com/en-us/download/details.aspx?id=108649">https://www.microsoft.com/en-us/download/details.aspx?id=108649</a>	Install "Security Update for Microsoft Word 2016 (KB5002858)"
KB5002849	<a href="https://www.microsoft.com/en-us/download/details.aspx?id=108578&amp;msockid=367ed609577a663b1497c3b056c867a9">https://www.microsoft.com/en-us/download/details.aspx?id=108578&amp;msockid=367ed609577a663b1497c3b056c867a9</a>	Install "Security Update for Microsoft Excel 2016 (KB5002849)"

KB5002718	<a href="https://www.microsoft.com/en-us/download/details.aspx?id=108577&amp;msockid=367ed609577a663b1497c3b056c867a9">https://www.microsoft.com/en-us/download/details.aspx?id=108577&amp;msockid=367ed609577a663b1497c3b056c867a9</a>	Install “Security Update for Microsoft Office 2016 (KB5002718)”
<b>.Net Framework Security Updates</b>		
KB5082413	<a href="https://www.catalog.update.microsoft.com/Search.aspx?q=KB5082413">https://www.catalog.update.microsoft.com/Search.aspx?q=KB5082413</a>	Install update matching “windows10.0-kb5082413-x64” from “2026-04 Cumulative Update for .NET Framework 3.5 and 4.7.2 for Windows 10 Version 1809 for x64 (KB5082413)”
<b>Other Security Updates</b>		
Disable RC4 and 3DES Cipher	Not Applicable	Refer Disabling RC4 and 3DES Cipher for resolving Sweet32 OpenSSL Vulnerability (CVE-2016-2183) section.
Enforce WinVerifyTrust Signature Validation (CVE-2013-3900)	Not Applicable	Refer Enforce WinVerifyTrust Signature Validation (CVE-2013-3900) section
OPTIONAL - Windows Speculative Execution Configuration Check	Not Applicable	Refer OPTIONAL - Windows Speculative Execution Configuration Check section

## Software Only Review(Windows 10 Pro/Enterprise, Windows 11)

Note: All applicable released patches are qualified, and it is the responsibility of hospital to keep them up to date.

### DELL 5820 Tower BIOS update to v2.48.0 Instructions:

**IMPORTANT:** The instructions in this section only apply to Altix and BT21 (MLCL 7.x) Dell 5820 Tower computers.

1. If the Dell 5820 computer is configured with Pre-Boot Authorization, refer to P/N 5123004-1EN Mac-Lab/CardioLab Privacy and Security User Manual – Appendix B Self-Encrypting Drive Setup and execute section B.3 to disable locking and PBA prior to updating the BIOS.  
**NOTE:** Booting from Removable Media to be enabled for this step. To enable booting from removable media, refer section [Steps for Enabling Boot from Removable Media](#)
2. Go to the Dell Product Support - Dell Precision 5820 Tower and Precision 5820 Tower X-Series System BIOS webpage: <https://www.dell.com/support/home/en-in/drivers/driversdetails?driverid=6y45v&oscode=w2021&productcode=precision-5820-workstation>
3. If the Version listed is Version 2.48.0 with Release date 22 Dec 2025, click the **Download** button and save the BIOS executable file.
4. If the Version listed is not Version 2.48.0, scroll down and click **Other Available Versions** to list previous BIOS versions, locate and click 2.48.0 22 Dec 2025, click the Download button, and save the BIOS executable file.
5. Log on to the Dell 5820 computer as a user in the Administrators group.
6. Run the downloaded **Precision\_5820\_2.48.0.exe** file.
7. Click **Yes** to allow this app to make changes to your device.
8. Click **OK** to update the system BIOS and firmware.
9. At the Confirm BIOS Replacement pop-up window, verify the BIOS version “INSTALLED” is not 2.48.0.  
Note: If the installed version is 2.48.0, no BIOS update is needed, click **Cancel** and skip the remaining steps in this procedure.
10. Click **OK** to confirm BIOS replacement.
11. The update process will begin, and the computer will restart.
12. The firmware update may take several minutes to complete. Do not remove power during the update.
13. The computer will reboot at the end of the update process.
14. Log on to the Dell 5820 computer as a user in the Administrators group.
15. In the Windows taskbar search box, type “system information” and press **Enter**.
16. Select **System Summary** in the left pane, locate the BIOS Version item, and verify the corresponding version value is 2.48.0.
17. If the BIOS version is not 2.48.0, repeat the above procedure.
18. If the computer was configured with Pre-Boot Authorization prior to step 1 above, refer to P/N 5123004-1EN Mac-Lab/CardioLab Privacy and Security User Manual – Appendix B Self-Encrypting Drive Setup and execute section B.1 to reenable locking and PBA. **NOTE:** Booting from Removable Media to be enabled for this step. To enable booting from removable media, refer section [Steps for Enabling Boot from Removable Media](#)

**NOTE:** For computers configured with Pre-Boot Authorization, Booting from Removable Media to be disabled post BIOS Upgrade. To disable Booting from Removable Media refer section [Steps for Disabling Boot from Removable Media](#)

## Disabling RC4 and 3DES Cipher for resolving Sweet32 OpenSSL Vulnerability (CVE-2016-2183)

1. Log on to Windows as Administrator or a member of that group.

2. Open a command prompt and enter the following commands:
3. REG ADD "HKEY\_LOCAL\_MACHINE\SYSTEM\CurrentControlSet\Control\SecurityProviders\SCHANNEL\Ciphers\RC4 128/128" /f
4. REG ADD "HKEY\_LOCAL\_MACHINE\SYSTEM\CurrentControlSet\Control\SecurityProviders\SCHANNEL\Ciphers\RC4 128/128" /v Enabled /t REG\_DWORD /d 00000000 /f
5. REG ADD "HKEY\_LOCAL\_MACHINE\SYSTEM\CurrentControlSet\Control\SecurityProviders\SCHANNEL\Ciphers\RC4 40/128" /f
6. REG ADD "HKEY\_LOCAL\_MACHINE\SYSTEM\CurrentControlSet\Control\SecurityProviders\SCHANNEL\Ciphers\RC4 40/128" /v Enabled /t REG\_DWORD /d 00000000 /f
7. REG ADD "HKEY\_LOCAL\_MACHINE\SYSTEM\CurrentControlSet\Control\SecurityProviders\SCHANNEL\Ciphers\RC4 56/128" /f
8. REG ADD "HKEY\_LOCAL\_MACHINE\SYSTEM\CurrentControlSet\Control\SecurityProviders\SCHANNEL\Ciphers\RC4 56/128" /v Enabled /t REG\_DWORD /d 00000000 /f
9. REG ADD "HKEY\_LOCAL\_MACHINE\SYSTEM\CurrentControlSet\Control\SecurityProviders\SCHANNEL\Ciphers\Triple DES 168" /f
10. REG ADD "HKEY\_LOCAL\_MACHINE\SYSTEM\CurrentControlSet\Control\SecurityProviders\SCHANNEL\Ciphers\Triple DES 168" /v Enabled /t REG\_DWORD /d 00000000 /f
11. REG ADD "HKEY\_LOCAL\_MACHINE\SYSTEM\CurrentControlSet\Control\SecurityProviders\SCHANNEL\Ciphers\Triple DES 168/168" /f
12. REG ADD "HKEY\_LOCAL\_MACHINE\SYSTEM\CurrentControlSet\Control\SecurityProviders\SCHANNEL\Ciphers\Triple DES 168/168" /v Enabled /t REG\_DWORD /d 00000000 /f
13. Close the command prompt.

## **OPTIONAL – Remove Microsoft Windows Unquoted Service Path Enumeration Vulnerability in Windows Server 2016**

1. Log on to Windows as Administrator or a member of that group
2. Open Regedit do the following
  - a. On Windows Server 2016
    - i. Navigate to HKLM\System\CurrentControlSet\Services\GEMS Task Scheduler.
    - ii. Change the imagepath key value from:  
**C:\Program Files\GE Healthcare\MLCL\Bin\ArchiveUtility\GEMS\_TaskSvc.exe**  
To:

**“C:\Program Files\GE Healthcare\MLCL\Bin\ArchiveUtility\GEMS\_TaskSvc.exe”**

Note: The leading and trailing Quote marks are part of the key value. The quotes are what removes the vulnerability

## Enforce WinVerifyTrust Signature Validation (CVE-2013-3900)

1. Log on to Windows as Administrator or a member of that group
2. Open Regedit do the following
  - i. Paste the following text in a text editor such as Notepad. Then, save the file by using the .reg file name extension (for example, enableAuthenticodeVerification64.reg).

```
Windows Registry Editor Version 5.00
[HKEY_LOCAL_MACHINE\Software\Microsoft\Cryptography\Wintrust\Config]
"EnableCertPaddingCheck"="1"

[HKEY_LOCAL_MACHINE\Software\Wow6432Node\Microsoft\Cryptography\Wintrust\Config]
"EnableCertPaddingCheck"="1"
```

- ii. You can apply this .reg file to individual systems by double-clicking it.

**Note:** You must restart the system for your changes to take effect.

## Fix for Microsoft Browser Information Disclosure Vulnerability (CVE-2017-8529)

1. Log on to Windows as Administrator or a member of that group
2. Click Start, click Run, type regedt32 or type regedit, and then click OK.
3. In Registry Editor, locate the following registry folder: HKEY\_LOCAL\_MACHINE\SOFTWARE\WOW6432Node\Microsoft\Internet Explorer\Main\FeatureControl\
4. Right-click FeatureControl, point to New, and then click Key.
5. Type FEATURE\_ENABLE\_PRINT\_INFO\_DISCLOSURE\_FIX, and then press Enter to name the new subkey.
6. Right-click FEATURE\_ENABLE\_PRINT\_INFO\_DISCLOSURE\_FIX, point to New, and then click DWORD Value.
7. Type "iexplore.exe" for the new DWORD value.

8. Double-click the new DWORD value named iexplore.exe and change the Value data field to 1.
9. Click OK to close.

## **OPTIONAL - Windows Speculative Execution Configuration Check**

1. Log on to Windows as Administrator or a member of that group
2. Click Start, click Run, type regedt32 or type regedit, and then click OK.
3. In Registry Editor, locate the following registry folder: HKEY\_LOCAL\_MACHINE\SYSTEM\CurrentControlSet\Control\Session Manager\Memory Management
4. Right-click Memory Management point to New, and then click DWORD Value.
5. Type "FeatureSettingsOverride" for the new DWORD value.
6. Double-click the new DWORD value named FeatureSettingsOverride and change the Value data field to 72 (decimal value).
7. Type " FeatureSettingsOverrideMask" for the new DWORD value.
8. Double-click the new DWORD value named FeatureSettingsOverrideMask and change the Value data field to 3 (decimal value).
9. Click OK to close.

## **Steps for Enabling Boot from Removable Media**

In the BIOS, if below check boxes are already checked then no action needed. If below check boxes are unchecked then check these checkboxes and click on Apply Button.

- Settings -> System Configuration -> Miscellaneous devices -> Secure Digital (SD) Card Boot
- Settings -> System Configuration -> USB Configuration -> Enable USB Boot Support

## **Steps for Disabling Boot from Removable Media**

In the BIOS, if below check boxes are already unchecked then no action needed. If below check boxes are checked then uncheck these checkboxes and click on Apply Button.

- Settings -> System Configuration -> Miscellaneous devices -> Secure Digital (SD) Card Boot
- Settings -> System Configuration -> USB Configuration -> Enable USB Boot Support

## **Workarounds for installing Windows Cumulative Updates for Altix / Altix BT21:**

### **Note:**

- Mentioned workarounds to be tried only when Windows Cumulative Update installation fails.

- In case of Windows Cumulative Update fails even after this workaround , customer to reach out to Microsoft Support.
- Windows Defender or Microsoft Defender both are synonymous and indicate the same.

### **Workaround 1: Disable Windows Defender Antivirus (Applicable only if Windows Defender is used instead of Third-Party Antivirus)**

- 1) Turn off Windows Defender Antivirus, follow steps mentioned in Steps to disable Windows Defender Antivirus section.
- 2) Install Windows Cumulative Update
- 3) Post Windows Cumulative Update Installation,
  - a. Re-enable Windows Defender Antivirus, follow steps mentioned in Steps to enable Windows Defender Antivirus section

### **Steps to disable Windows Defender Antivirus:**

1. **Open Group Policy Editor**
  - In the Windows Taskbar Search type **gpedit.msc**, and press **Enter**.
2. **Navigate to the Windows Defender Settings**
  - In the left panel, go to:  
**Computer Configuration > Administrative Templates > Windows Components > Microsoft Defender Antivirus**
  - In the right pane, double-click "**Turn off Microsoft Defender Antivirus**".
  - Set it to **Enabled**.
  - Click **Apply**, then **OK**.
  - In the left panel, go to:  
**Computer Configuration > Administrative Templates > Windows Components > Microsoft Defender Antivirus > Real-time Protection**
  - In the right pane, double-click "**Turn off real-time protection**".
  - Set it to **Enabled**.
  - Click **Apply**, then **OK**.
3. **Restart Your Computer**
  - To apply changes, restart your system.

### **Steps to enable Windows Defender Antivirus:**

1. **Open Group Policy Editor**
  - In the Windows Taskbar Search type **gpedit.msc**, and press **Enter**.
2. **Navigate to the Windows Defender Settings**

- In the left panel, go to:  
**Computer Configuration > Administrative Templates > Windows Components > Microsoft Defender Antivirus**
  - In the right pane, double-click "**Turn off Microsoft Defender Antivirus**".
  - Set it to **Disabled**.
  - Click **Apply**, then **OK**.
  - In the left panel, go to:  
**Computer Configuration > Administrative Templates > Windows Components > Microsoft Defender Antivirus > Real-time Protection**
  - In the right pane, double-click "**Turn off real-time protection**".
  - Set it to **Disabled**.
  - Click **Apply**, then **OK**.
3. **Restart Your Computer**
- To apply changes, restart your system.

### **Workaround 2: MWL MPPS Service**

- 1) In the Windows Taskbar search, type Services.
- 2) Open Services.
- 3) If MWL MPPS Service is present, right click on the service and select Properties. Change Startup Type to Disabled. Click OK.
- 4) Install the Windows Cumulative Update.
- 5) **Acquisition Workstation Only:** Following installation of the Windows Cumulative Update, repeat steps (1) and (2) above. Right click on MWL MPPS Service and select Properties. Change Startup Type to Automatic. Click Apply. Click Start. Click OK.

## **Office 2016 End of support:**

Microsoft will no longer provide technical support, bug fixes, or security fixes for Office 2016 vulnerabilities after October 14, 2025. It is recommended to upgrade to Office 2024.

Due to Office 2016 End of support, Customers must choose one of the below options:

### **Option 1: Upgrade to Microsoft Office 2024 LTSC**

Customers to contact GEHC sales representative to review upgrade options for Office 2024 version.

## Option 2: Remove Office 2016

If customer doesn't need ML/CL reporting feature, they can choose to remove Office 2016.

Removal of Office 2016 can be accomplished by two ways,

### 1. Take GEHC Field Engineers help:

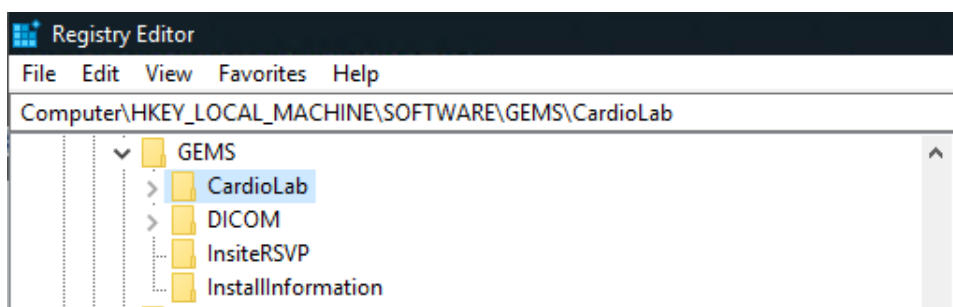
Customers to contact GEHC sales representative to have GEHC Field Engineers to visit customer site and uninstall Office 2016 and configure ML/CL system.

### 2. Customer Self-Managed:

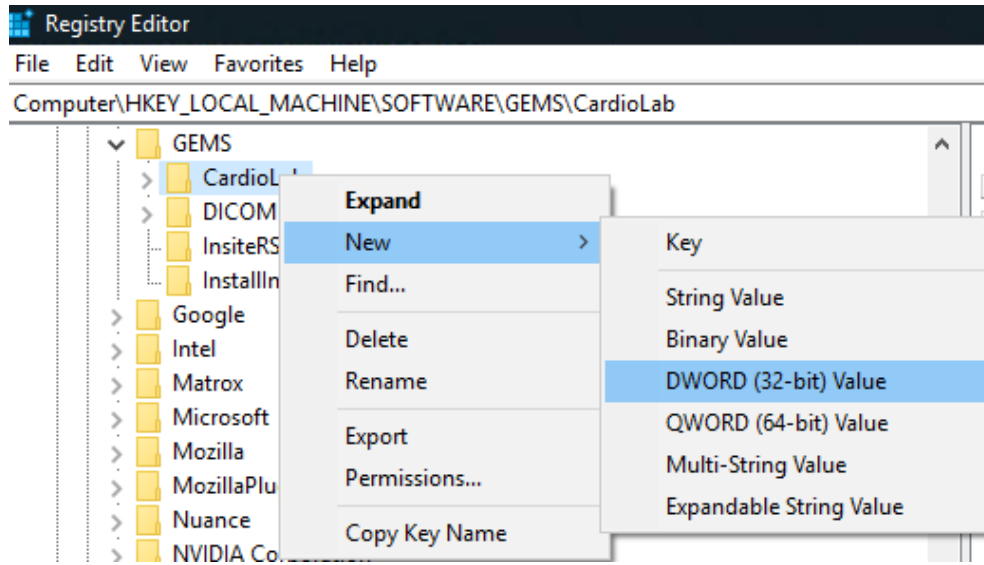
Customer to Uninstall Office 2016 and then follow below instructions to configure ML/CL systems to work without Microsoft Office.

**Note:** The below instructions need to be followed on ML/CL Acquisition, Review, SWO Review systems where Microsoft Office is not present or uninstalled.

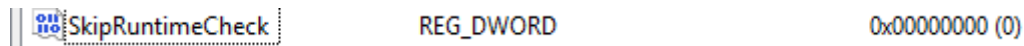
6. Select **Start** and search for **Command Prompt**.
7. Right-click **Command Prompt** and select **More > Run as administrator** (click **Yes** at the UAC prompt).
8. Type *regedit* and press **Enter**.
9. Navigate to *HKEY\_LOCAL\_MACHINE\SOFTWARE\GEMS\CardioLab*



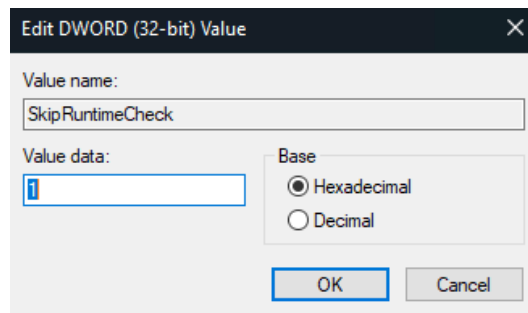
10. Right click on *CardioLab* folder and select **New > DWORD (32-bit) Value** registry key.



11. Rename the newly created key to **SkipRuntimeCheck**.



12. Double click on **SkipRuntimeCheck** and set value data as **1** and click OK.



13. Close all windows and restart the system.

14. Sign in to the system, Launch the Mac-Lab/CardioLab application and make sure it starts without errors.

**Note: Below steps are only applicable for MLCL Acquisition systems only**

15. Go to the Microsoft Visual C++ Redistributable download page: [LINK](#)
16. Click Download button, select vcredist\_x64.exe and click Download button, and save the .exe file.
17. Log onto MLCL system as a user in the Administrators group.
18. Run the downloaded file
19. Close all open windows

### **Option 3: Continue with Office 2016 without Microsoft Support**

Customer understands that there will be no technical support, bug fixes, or security fixes for Office 2016 vulnerabilities after October 14, 2025. Customer here by accept the risks and continue using Office 2016 without Microsoft Support.

### **Office 2024 LTSC Update Instructions:**

**NOTE:** configuration.xml file is available at section **Office 2024 LTSC Configuration File** within this document.

**Follow below steps to download Office 2024 LTSC Update to your personal laptop/workstation.**

1. Open and save configuration.xml file at path C:\Temp
2. Download **Office Deployment Tool** from Microsoft Website <https://www.microsoft.com/en-in/download/details.aspx?id=49117&msockid=367ed609577a663b1497c3b056c867a9>
3. Double click on downloaded **Office Deployment Tool**
4. Accept license terms and click on continue
5. Select C:\Temp as path for file extraction and click OK
6. Message appears indicating that files extracted successfully.
7. Open command prompt as administrator and execute “cd C:\Temp”
8. Execute “setup /download configuration.xml” and wait till download completes.
9. Now from C:\Temp copy below files and folders to SD Card.

- **Office2024 folder**
- **configuration.xml file**
- **Setup.exe file**

**Follow below steps to install Office 2024 LTSC Update in MLCL Acquisition or MLCL Review Workstation.**

**NOTE:** Close any open Microsoft Office applications if open in MLCL Acquisition or MLCL Review Workstation prior to following below steps.

1. Copy below mentioned files and folders from SD Card to C:\Temp folder in MLCL Acquisition\Review System.
  - **Office2024 folder**
  - **configuration.xml file**
  - **Setup.exe file**
2. Open command prompt as administrator and execute “cd C:\Temp”
3. Execute “setup /configure configuration.xml” and wait till Office 2024 Updates installation complete

## Office 2024 LTSC Configuration File



configuration.xml

## Appendix:

### Security Patch Base Configuration

This section defines list of patches that are included in the system image when the system is installed. Additional applicable patches that need to be installed on the system are called out in the respective sections listed above. This section is for reference only.

### Validated Microsoft Patches Included on 7.0 Installation

#### DELL 5820 7.0 with Microsoft Windows 10 Enterprise 2016 LTSCB – 2019 Image

#	Windows Update Description
1	Hotfix 3103 for Microsoft SQL Server Brower (KB4494352)
2	Definition Update for Microsoft Office 2016 (KB3115407) 64-Bit Edition
3	Security Update for Microsoft Office 2016 (KB3085538) 64-Bit Edition
4	Security Update for Microsoft Office 2016 (KB3115135) 64-Bit Edition
5	Security Update for Microsoft Office 2016 (KB3213551) 64-Bit Edition
6	Security Update for Microsoft Office 2016 (KB4011574) 64-Bit Edition
7	Security Update for Microsoft Office 2016 (KB4022162) 64-Bit Edition
8	Security Update for Microsoft Office 2016 (KB4022172) 64-Bit Edition
9	Security Update for Microsoft Office 2016 (KB4022176) 64-Bit Edition
10	Security Update for Microsoft Office 2016 (KB4022232) 64-Bit Edition
11	Security Update for Microsoft Office 2016 (KB4464551) 64-Bit Edition
12	Security Update for Microsoft Word 2016 (KB4464536) 64-Bit Edition
13	Update for Microsoft Access 2016 (KB4462192) 64-Bit Edition
14	Update for Microsoft Excel 2016 (KB4464550) 64-Bit Edition
15	Update for Microsoft Office 2016 (KB2910954) 64-Bit Edition
16	Update for Microsoft Office 2016 (KB2920678) 64-Bit Edition
17	Update for Microsoft Office 2016 (KB2920684) 64-Bit Edition
18	Update for Microsoft Office 2016 (KB2920712) 64-Bit Edition

19	Update for Microsoft Office 2016 (KB2920717) 64-Bit Edition
20	Update for Microsoft Office 2016 (KB2920720) 64-Bit Edition
21	Update for Microsoft Office 2016 (KB2920724) 64-Bit Edition
22	Update for Microsoft Office 2016 (KB3114903) 64-Bit Edition
23	Update for Microsoft Office 2016 (KB3115081) 64-Bit Edition
24	Update for Microsoft Office 2016 (KB3115276) 64-Bit Edition
25	Update for Microsoft Office 2016 (KB3118262) 64-Bit Edition
26	Update for Microsoft Office 2016 (KB3118263) 64-Bit Edition
27	Update for Microsoft Office 2016 (KB3118264) 64-Bit Edition
28	Update for Microsoft Office 2016 (KB3178666) 64-Bit Edition
29	Update for Microsoft Office 2016 (KB3191929) 64-Bit Edition
30	Update for Microsoft Office 2016 (KB3213650) 64-Bit Edition
31	Update for Microsoft Office 2016 (KB4011035) 64-Bit Edition
32	Update for Microsoft Office 2016 (KB4011218) 64-Bit Edition
33	Update for Microsoft Office 2016 (KB4011225) 64-Bit Edition
34	Update for Microsoft Office 2016 (KB4011259) 64-Bit Edition
35	Update for Microsoft Office 2016 (KB4011634) 64-Bit Edition
36	Update for Microsoft Office 2016 (KB4011669) 64-Bit Edition
37	Update for Microsoft Office 2016 (KB4018380) 64-Bit Edition
38	Update for Microsoft Office 2016 (KB4022161) 64-Bit Edition
39	Update for Microsoft Office 2016 (KB4022193) 64-Bit Edition
40	Update for Microsoft Office 2016 (KB4461435) 64-Bit Edition
41	Update for Microsoft Office 2016 (KB4461441) 64-Bit Edition
42	Update for Microsoft Office 2016 (KB4461477) 64-Bit Edition
43	Update for Microsoft Office 2016 (KB4462116) 64-Bit Edition
44	Update for Microsoft Office 2016 (KB4462118) 64-Bit Edition
45	Update for Microsoft Office 2016 (KB4462119) 64-Bit Edition
46	Update for Microsoft Office 2016 (KB4462239) 64-Bit Edition

47	Update for Microsoft Office 2016 (KB4462243) 64-Bit Edition
48	Update for Microsoft Office 2016 (KB4464501) 64-Bit Edition
49	Update for Microsoft Office 2016 (KB4464538) 64-Bit Edition
50	Update for Microsoft Office 2016 (KB4464552) 64-Bit Edition
51	Update for Microsoft OneDrive for Business (KB4022219) 64-Bit Edition
52	Update for Microsoft OneNote 2016 (KB4022216) 64-Bit Edition
53	Update for Microsoft Outlook 2016 (KB4464540) 64-Bit Edition
54	Update for Microsoft PowerPoint 2016 (KB4464533) 64-Bit Edition
55	Update for Microsoft Project 2016 (KB4464541) 64-Bit Edition
56	Update for Microsoft Publisher 2016 (KB3178696) 64-Bit Edition
57	Update for Microsoft Visio 2016 (KB4462113) 64-Bit Edition
58	Update for Skype for Business 2016 (KB4464532) 64-Bit Edition
59	Hotfix 3006 for SQL Server 2017 (KB4038634) (64-bit)
60	Hotfix 3035 for SQL Server 2017 (KB4293805) (64-bit)
61	Hotfix 3076 for SQL Server 2017 (KB4484710) (64-bit)
62	Hotfix 3103 for SQL Server 2017 (KB4494352) (64-bit)
63	Security Update for Adobe Flash Player (KB4497932)
64	Security Update for Microsoft Windows (KB4485447)
65	Security Update for Microsoft Windows (KB4494440)
66	Security Update for Microsoft Windows (KB4498947)
67	Update for Microsoft Windows (KB2693643)
68	Update for Microsoft Windows (KB4054590)
69	Update for Microsoft Windows (KB4346087)
70	Microsoft Visual C++ 2010 x64 Redistributable (KB2565063)
71	Update for Microsoft Visual Studio 2015 (KB3095681)
72	Hotfix 3103 for Microsoft SQL Server VSS Writer (64-bit) (KB4494352)
73	Update for (KB2504637)

## DELL 5820 7.0 with Microsoft Windows 10 Enterprise 2016 LTSCB – 2020/2021 Image

#	Windows Update Description
1	Hotfix 3335 for Microsoft SQL Server Browser (KB4557397)
2	Definition Update for Microsoft Office 2016 (KB3115407) 64-Bit Edition
3	Security Update for Microsoft Access 2016 (KB4484167) 64-Bit Edition
4	Security Update for Microsoft Office 2016 (KB3085538) 64-Bit Edition
5	Security Update for Microsoft Office 2016 (KB3213551) 64-Bit Edition
6	Security Update for Microsoft Office 2016 (KB4011574) 64-Bit Edition
7	Security Update for Microsoft Office 2016 (KB4022162) 64-Bit Edition
8	Security Update for Microsoft Office 2016 (KB4022176) 64-Bit Edition
9	Security Update for Microsoft Office 2016 (KB4484258) 64-Bit Edition
10	Security Update for Microsoft Outlook 2016 (KB4484433) 64-Bit Edition
11	Security Update for Microsoft Project 2016 (KB4484441) 64-Bit Edition
12	Security Update for Microsoft Publisher 2016 (KB4011097) 64-Bit Edition
13	Security Update for Microsoft Visio 2016 (KB4484244) 64-Bit Edition
14	Security Update for Microsoft Word 2016 (KB4484438) 64-Bit Edition
15	Update for Microsoft Excel 2016 (KB4484437) 64-Bit Edition
16	Update for Microsoft Office 2016 (KB2920678) 64-Bit Edition
17	Update for Microsoft Office 2016 (KB2920712) 64-Bit Edition
18	Update for Microsoft Office 2016 (KB2920717) 64-Bit Edition
19	Update for Microsoft Office 2016 (KB2920720) 64-Bit Edition
20	Update for Microsoft Office 2016 (KB2920724) 64-Bit Edition
21	Update for Microsoft Office 2016 (KB3114528) 64-Bit Edition
22	Update for Microsoft Office 2016 (KB3114852) 64-Bit Edition
23	Update for Microsoft Office 2016 (KB3114903) 64-Bit Edition
24	Update for Microsoft Office 2016 (KB3115081) 64-Bit Edition

25	Update for Microsoft Office 2016 (KB3115276) 64-Bit Edition
26	Update for Microsoft Office 2016 (KB3118262) 64-Bit Edition
27	Update for Microsoft Office 2016 (KB3118263) 64-Bit Edition
28	Update for Microsoft Office 2016 (KB3118264) 64-Bit Edition
29	Update for Microsoft Office 2016 (KB3141456) 64-Bit Edition
30	Update for Microsoft Office 2016 (KB3178666) 64-Bit Edition
31	Update for Microsoft Office 2016 (KB3191929) 64-Bit Edition
32	Update for Microsoft Office 2016 (KB3213650) 64-Bit Edition
33	Update for Microsoft Office 2016 (KB4011035) 64-Bit Edition
34	Update for Microsoft Office 2016 (KB4011225) 64-Bit Edition
35	Update for Microsoft Office 2016 (KB4011259) 64-Bit Edition
36	Update for Microsoft Office 2016 (KB4011629) 64-Bit Edition
37	Update for Microsoft Office 2016 (KB4011634) 64-Bit Edition
38	Update for Microsoft Office 2016 (KB4011669) 64-Bit Edition
39	Update for Microsoft Office 2016 (KB4022161) 64-Bit Edition
40	Update for Microsoft Office 2016 (KB4022193) 64-Bit Edition
41	Update for Microsoft Office 2016 (KB4032254) 64-Bit Edition
42	Update for Microsoft Office 2016 (KB4461435) 64-Bit Edition
43	Update for Microsoft Office 2016 (KB4462119) 64-Bit Edition
44	Update for Microsoft Office 2016 (KB4464535) 64-Bit Edition
45	Update for Microsoft Office 2016 (KB4464538) 64-Bit Edition
46	Update for Microsoft Office 2016 (KB4464586) 64-Bit Edition
47	Update for Microsoft Office 2016 (KB4475580) 64-Bit Edition
48	Update for Microsoft Office 2016 (KB4484145) 64-Bit Edition
49	Update for Microsoft Office 2016 (KB4484171) 64-Bit Edition
50	Update for Microsoft Office 2016 (KB4484174) 64-Bit Edition

51	Update for Microsoft Office 2016 (KB4484327) 64-Bit Edition
52	Update for Microsoft Office 2016 (KB4484328) 64-Bit Edition
53	Update for Microsoft Office 2016 (KB4484335) 64-Bit Edition
54	Update for Microsoft Office 2016 (KB4484392) 64-Bit Edition
55	Update for Microsoft Office 2016 (KB4484394) 64-Bit Edition
56	Update for Microsoft Office 2016 (KB4484439) 64-Bit Edition
57	Update for Microsoft OneDrive for Business (KB4022219) 64-Bit Edition
58	Update for Microsoft OneNote 2016 (KB4484329) 64-Bit Edition
59	Update for Microsoft PowerPoint 2016 (KB4484337) 64-Bit Edition
60	Update for Microsoft Visio Viewer 2016 (KB2920709) 64-Bit Edition
61	Update for Skype for Business 2016 (KB4484326) 64-Bit Edition
62	Hotfix 3006 for SQL Server 2017 (KB4038634) (64-bit)
63	Hotfix 3035 for SQL Server 2017 (KB4293805) (64-bit)
64	Hotfix 3076 for SQL Server 2017 (KB4484710) (64-bit)
65	Hotfix 3103 for SQL Server 2017 (KB4494352) (64-bit)
66	Hotfix 3192 for SQL Server 2017 (KB4505225) (64-bit)
67	Hotfix 3335 for SQL Server 2017 (KB4557397) (64-bit)
68	Microsoft Visual C++ 2010 x64 Redistributable (KB2565063)
69	Update for Microsoft Visual Studio 2015 (KB3095681)
70	Hotfix 3335 for Microsoft SQL Server VSS Writer (64-bit) (KB4557397)
71	Security Update for Adobe Flash Player (KB4561600)
72	Security Update for Microsoft Windows (KB4485447)
73	Security Update for Microsoft Windows (KB4498947)
74	Security Update for Microsoft Windows (KB4565511)
75	Security Update for Microsoft Windows (KB4565912)
76	Update for Microsoft Windows (KB2693643)

77	Update for Microsoft Windows (KB4054590)
78	Update for Microsoft Windows (KB4494175)
79	Update for (KB2504637)

### **DELL 5820 7.0 with Microsoft Windows 10 Enterprise 2016 LTSCB – Revised 2021 Image**

#	Windows Update Description
1	Hotfix 3391 for Microsoft SQL Server Browser (KB5001228)
2	Definition Update for Microsoft Office 2016 (KB3115407) 64-Bit Edition
3	Security Update for Microsoft Access 2016 (KB4504711) 64-Bit Edition
4	Security Update for Microsoft Excel 2016 (KB5001947) 64-Bit Edition
5	Security Update for Microsoft Office 2016 (KB3085538) 64-Bit Edition
6	Security Update for Microsoft Office 2016 (KB3213551) 64-Bit Edition
7	Security Update for Microsoft Office 2016 (KB4011574) 64-Bit Edition
8	Security Update for Microsoft Office 2016 (KB4022162) 64-Bit Edition
9	Security Update for Microsoft Office 2016 (KB4022176) 64-Bit Edition
10	Security Update for Microsoft Office 2016 (KB5001950) 64-Bit Edition
11	Security Update for Microsoft Office 2016 (KB5001951) 64-Bit Edition
12	Security Update for Microsoft Outlook 2016 (KB5001942) 64-Bit Edition
13	Security Update for Microsoft PowerPoint 2016 (KB4493224) 64-Bit Edition
14	Security Update for Microsoft Visio 2016 (KB4493151) 64-Bit Edition
15	Security Update for Microsoft Word 2016 (KB5001919) 64-Bit Edition
16	Update for Microsoft Office 2016 (KB2920678) 64-Bit Edition
17	Update for Microsoft Office 2016 (KB2920712) 64-Bit Edition
18	Update for Microsoft Office 2016 (KB2920717) 64-Bit Edition
19	Update for Microsoft Office 2016 (KB2920720) 64-Bit Edition

20	Update for Microsoft Office 2016 (KB2920724) 64-Bit Edition
21	Update for Microsoft Office 2016 (KB3114852) 64-Bit Edition
22	Update for Microsoft Office 2016 (KB3114903) 64-Bit Edition
23	Update for Microsoft Office 2016 (KB3115081) 64-Bit Edition
24	Update for Microsoft Office 2016 (KB3115276) 64-Bit Edition
25	Update for Microsoft Office 2016 (KB3118262) 64-Bit Edition
26	Update for Microsoft Office 2016 (KB3118263) 64-Bit Edition
27	Update for Microsoft Office 2016 (KB3118264) 64-Bit Edition
28	Update for Microsoft Office 2016 (KB3141456) 64-Bit Edition
29	Update for Microsoft Office 2016 (KB3178666) 64-Bit Edition
30	Update for Microsoft Office 2016 (KB3191929) 64-Bit Edition
31	Update for Microsoft Office 2016 (KB3213650) 64-Bit Edition
32	Update for Microsoft Office 2016 (KB4011035) 64-Bit Edition
33	Update for Microsoft Office 2016 (KB4011225) 64-Bit Edition
34	Update for Microsoft Office 2016 (KB4011259) 64-Bit Edition
35	Update for Microsoft Office 2016 (KB4011629) 64-Bit Edition
36	Update for Microsoft Office 2016 (KB4011634) 64-Bit Edition
37	Update for Microsoft Office 2016 (KB4011669) 64-Bit Edition
38	Update for Microsoft Office 2016 (KB4022161) 64-Bit Edition
39	Update for Microsoft Office 2016 (KB4022193) 64-Bit Edition
40	Update for Microsoft Office 2016 (KB4032254) 64-Bit Edition
41	Update for Microsoft Office 2016 (KB4462117) 64-Bit Edition
42	Update for Microsoft Office 2016 (KB4462119) 64-Bit Edition
43	Update for Microsoft Office 2016 (KB4464535) 64-Bit Edition
44	Update for Microsoft Office 2016 (KB4464538) 64-Bit Edition
45	Update for Microsoft Office 2016 (KB4475580) 64-Bit Edition

46	Update for Microsoft Office 2016 (KB4475584) 64-Bit Edition
47	Update for Microsoft Office 2016 (KB4484145) 64-Bit Edition
48	Update for Microsoft Office 2016 (KB4484171) 64-Bit Edition
49	Update for Microsoft Office 2016 (KB4484174) 64-Bit Edition
50	Update for Microsoft Office 2016 (KB4484395) 64-Bit Edition
51	Update for Microsoft Office 2016 (KB4486668) 64-Bit Edition
52	Update for Microsoft Office 2016 (KB4486672) 64-Bit Edition
53	Update for Microsoft Office 2016 (KB4486747) 64-Bit Edition
54	Update for Microsoft Office 2016 (KB4493153) 64-Bit Edition
55	Update for Microsoft Office 2016 (KB5001948) 64-Bit Edition
56	Update for Microsoft OneDrive for Business (KB4022219) 64-Bit Edition
57	Update for Microsoft OneNote 2016 (KB4484329) 64-Bit Edition
58	Update for Microsoft Project 2016 (KB4493191) 64-Bit Edition
59	Update for Microsoft Publisher 2016 (KB4484334) 64-Bit Edition
60	Update for Microsoft Visio Viewer 2016 (KB2920709) 64-Bit Edition
61	Update for Skype for Business 2016 (KB4493155) 64-Bit Edition
62	Hotfix 3006 for SQL Server 2017 (KB4038634) (64-bit)
63	Hotfix 3035 for SQL Server 2017 (KB4293805) (64-bit)
64	Hotfix 3076 for SQL Server 2017 (KB4484710) (64-bit)
65	Hotfix 3103 for SQL Server 2017 (KB4494352) (64-bit)
66	Hotfix 3192 for SQL Server 2017 (KB4505225) (64-bit)
67	Hotfix 3335 for SQL Server 2017 (KB4557397) (64-bit)
68	Hotfix 3370 for SQL Server 2017 (KB4583457) (64-bit)
69	Hotfix 3391 for SQL Server 2017 (KB5001228) (64-bit)
70	Microsoft Visual C++ 2010 x64 Redistributable (KB2565063)
71	Update for Microsoft Visual Studio 2015 (KB3095681)

72	Hotfix 3391 for Microsoft SQL Server VSS Writer (64-bit) (KB5001228)
73	Security Update for Microsoft Windows (KB4485447)
74	Security Update for Microsoft Windows (KB4498947)
75	Security Update for Microsoft Windows (KB4565912)
76	Security Update for Microsoft Windows (KB5001402)
77	Security Update for Microsoft Windows (KB5004238)
78	Update for Microsoft Windows (KB2693643)
79	Update for Microsoft Windows (KB4054590)
80	Update for Microsoft Windows (KB4589210)
81	Update for (KB2504637)

### **DELL 5060 7.0 with Microsoft Windows 10 Enterprise 2016 LTSC – 2019 Image**

#	Windows Update Description
1	Hotfix 3103 for Microsoft SQL Server Brower (KB4494352)
2	Definition Update for Microsoft Office 2016 (KB3115407) 64-Bit Edition
3	Security Update for Microsoft Office 2016 (KB3085538) 64-Bit Edition
4	Security Update for Microsoft Office 2016 (KB3115135) 64-Bit Edition
5	Security Update for Microsoft Office 2016 (KB3213551) 64-Bit Edition
6	Security Update for Microsoft Office 2016 (KB4011574) 64-Bit Edition
7	Security Update for Microsoft Office 2016 (KB4022162) 64-Bit Edition
8	Security Update for Microsoft Office 2016 (KB4022172) 64-Bit Edition
9	Security Update for Microsoft Office 2016 (KB4022176) 64-Bit Edition
10	Security Update for Microsoft Office 2016 (KB4022232) 64-Bit Edition
11	Security Update for Microsoft Office 2016 (KB4464551) 64-Bit Edition
12	Security Update for Microsoft Word 2016 (KB4464536) 64-Bit Edition
13	Update for Microsoft Access 2016 (KB4462192) 64-Bit Edition
14	Update for Microsoft Excel 2016 (KB4464550) 64-Bit Edition

15	Update for Microsoft Office 2016 (KB2910954) 64-Bit Edition
16	Update for Microsoft Office 2016 (KB2920678) 64-Bit Edition
17	Update for Microsoft Office 2016 (KB2920684) 64-Bit Edition
18	Update for Microsoft Office 2016 (KB2920712) 64-Bit Edition
19	Update for Microsoft Office 2016 (KB2920717) 64-Bit Edition
20	Update for Microsoft Office 2016 (KB2920720) 64-Bit Edition
21	Update for Microsoft Office 2016 (KB2920724) 64-Bit Edition
22	Update for Microsoft Office 2016 (KB3114903) 64-Bit Edition
23	Update for Microsoft Office 2016 (KB3115081) 64-Bit Edition
24	Update for Microsoft Office 2016 (KB3115276) 64-Bit Edition
25	Update for Microsoft Office 2016 (KB3118262) 64-Bit Edition
26	Update for Microsoft Office 2016 (KB3118263) 64-Bit Edition
27	Update for Microsoft Office 2016 (KB3118264) 64-Bit Edition
28	Update for Microsoft Office 2016 (KB3178666) 64-Bit Edition
29	Update for Microsoft Office 2016 (KB3191929) 64-Bit Edition
30	Update for Microsoft Office 2016 (KB3213650) 64-Bit Edition
31	Update for Microsoft Office 2016 (KB4011035) 64-Bit Edition
32	Update for Microsoft Office 2016 (KB4011218) 64-Bit Edition
33	Update for Microsoft Office 2016 (KB4011225) 64-Bit Edition
34	Update for Microsoft Office 2016 (KB4011259) 64-Bit Edition
35	Update for Microsoft Office 2016 (KB4011634) 64-Bit Edition
36	Update for Microsoft Office 2016 (KB4011669) 64-Bit Edition
37	Update for Microsoft Office 2016 (KB4018380) 64-Bit Edition
38	Update for Microsoft Office 2016 (KB4022161) 64-Bit Edition
39	Update for Microsoft Office 2016 (KB4022193) 64-Bit Edition
40	Update for Microsoft Office 2016 (KB4461435) 64-Bit Edition
41	Update for Microsoft Office 2016 (KB4461441) 64-Bit Edition
42	Update for Microsoft Office 2016 (KB4461477) 64-Bit Edition

43	Update for Microsoft Office 2016 (KB4462116) 64-Bit Edition
44	Update for Microsoft Office 2016 (KB4462118) 64-Bit Edition
45	Update for Microsoft Office 2016 (KB4462119) 64-Bit Edition
46	Update for Microsoft Office 2016 (KB4462239) 64-Bit Edition
47	Update for Microsoft Office 2016 (KB4462243) 64-Bit Edition
48	Update for Microsoft Office 2016 (KB4464501) 64-Bit Edition
49	Update for Microsoft Office 2016 (KB4464538) 64-Bit Edition
50	Update for Microsoft Office 2016 (KB4464552) 64-Bit Edition
51	Update for Microsoft OneDrive for Business (KB4022219) 64-Bit Edition
52	Update for Microsoft OneNote 2016 (KB4022216) 64-Bit Edition
53	Update for Microsoft Outlook 2016 (KB4464540) 64-Bit Edition
54	Update for Microsoft PowerPoint 2016 (KB4464533) 64-Bit Edition
55	Update for Microsoft Project 2016 (KB4464541) 64-Bit Edition
56	Update for Microsoft Publisher 2016 (KB3178696) 64-Bit Edition
57	Update for Microsoft Visio 2016 (KB4462113) 64-Bit Edition
58	Update for Skype for Business 2016 (KB4464532) 64-Bit Edition
59	Hotfix 3006 for SQL Server 2017 (KB4038634) (64-bit)
60	Hotfix 3035 for SQL Server 2017 (KB4293805) (64-bit)
61	Hotfix 3076 for SQL Server 2017 (KB4484710) (64-bit)
62	Hotfix 3103 for SQL Server 2017 (KB4494352) (64-bit)
63	Update for Microsoft Visual Studio 2015 (KB3095681)
64	Hotfix 3103 for Microsoft SQL Server VSS Writer (64-bit) (KB4494352)
65	Security Update for Adobe Flash Player (KB4497932)
66	Security Update for Microsoft Windows (KB4485447)
67	Security Update for Microsoft Windows (KB4494440)
68	Security Update for Microsoft Windows (KB4498947)
69	Update for Microsoft Windows (KB2693643)
70	Update for Microsoft Windows (KB4054590)

71	Update for Microsoft Windows (KB4346087)
72	Update for (KB2504637)

### DELL 5060 7.0 with Microsoft Windows 10 Enterprise 2016 LTSCB – 2020/2021 Image

#	Windows Update Description
1	Hotfix 3335 for Microsoft SQL Server Browser (KB4557397)
2	Definition Update for Microsoft Office 2016 (KB3115407) 64-Bit Edition
3	Security Update for Microsoft Access 2016 (KB4484167) 64-Bit Edition
4	Security Update for Microsoft Office 2016 (KB3085538) 64-Bit Edition
5	Security Update for Microsoft Office 2016 (KB3213551) 64-Bit Edition
6	Security Update for Microsoft Office 2016 (KB4011574) 64-Bit Edition
7	Security Update for Microsoft Office 2016 (KB4022162) 64-Bit Edition
8	Security Update for Microsoft Office 2016 (KB4022176) 64-Bit Edition
9	Security Update for Microsoft Office 2016 (KB4484258) 64-Bit Edition
10	Security Update for Microsoft Outlook 2016 (KB4484433) 64-Bit Edition
11	Security Update for Microsoft Project 2016 (KB4484441) 64-Bit Edition
12	Security Update for Microsoft Publisher 2016 (KB4011097) 64-Bit Edition
13	Security Update for Microsoft Visio 2016 (KB4484244) 64-Bit Edition
14	Security Update for Microsoft Word 2016 (KB4484438) 64-Bit Edition
15	Update for Microsoft Excel 2016 (KB4484437) 64-Bit Edition
16	Update for Microsoft Office 2016 (KB2920678) 64-Bit Edition
17	Update for Microsoft Office 2016 (KB2920712) 64-Bit Edition
18	Update for Microsoft Office 2016 (KB2920717) 64-Bit Edition
19	Update for Microsoft Office 2016 (KB2920720) 64-Bit Edition
20	Update for Microsoft Office 2016 (KB2920724) 64-Bit Edition
21	Update for Microsoft Office 2016 (KB3114528) 64-Bit Edition

22	Update for Microsoft Office 2016 (KB3114852) 64-Bit Edition
23	Update for Microsoft Office 2016 (KB3114903) 64-Bit Edition
24	Update for Microsoft Office 2016 (KB3115081) 64-Bit Edition
25	Update for Microsoft Office 2016 (KB3115276) 64-Bit Edition
26	Update for Microsoft Office 2016 (KB3118262) 64-Bit Edition
27	Update for Microsoft Office 2016 (KB3118263) 64-Bit Edition
28	Update for Microsoft Office 2016 (KB3118264) 64-Bit Edition
29	Update for Microsoft Office 2016 (KB3141456) 64-Bit Edition
30	Update for Microsoft Office 2016 (KB3178666) 64-Bit Edition
31	Update for Microsoft Office 2016 (KB3191929) 64-Bit Edition
32	Update for Microsoft Office 2016 (KB3213650) 64-Bit Edition
33	Update for Microsoft Office 2016 (KB4011035) 64-Bit Edition
34	Update for Microsoft Office 2016 (KB4011225) 64-Bit Edition
35	Update for Microsoft Office 2016 (KB4011259) 64-Bit Edition
36	Update for Microsoft Office 2016 (KB4011629) 64-Bit Edition
37	Update for Microsoft Office 2016 (KB4011634) 64-Bit Edition
38	Update for Microsoft Office 2016 (KB4011669) 64-Bit Edition
39	Update for Microsoft Office 2016 (KB4022161) 64-Bit Edition
40	Update for Microsoft Office 2016 (KB4022193) 64-Bit Edition
41	Update for Microsoft Office 2016 (KB4032254) 64-Bit Edition
42	Update for Microsoft Office 2016 (KB4461435) 64-Bit Edition
43	Update for Microsoft Office 2016 (KB4462119) 64-Bit Edition
44	Update for Microsoft Office 2016 (KB4464535) 64-Bit Edition
45	Update for Microsoft Office 2016 (KB4464538) 64-Bit Edition
46	Update for Microsoft Office 2016 (KB4464586) 64-Bit Edition
47	Update for Microsoft Office 2016 (KB4475580) 64-Bit Edition

48	Update for Microsoft Office 2016 (KB4484145) 64-Bit Edition
49	Update for Microsoft Office 2016 (KB4484171) 64-Bit Edition
50	Update for Microsoft Office 2016 (KB4484174) 64-Bit Edition
51	Update for Microsoft Office 2016 (KB4484327) 64-Bit Edition
52	Update for Microsoft Office 2016 (KB4484328) 64-Bit Edition
53	Update for Microsoft Office 2016 (KB4484335) 64-Bit Edition
54	Update for Microsoft Office 2016 (KB4484392) 64-Bit Edition
55	Update for Microsoft Office 2016 (KB4484394) 64-Bit Edition
56	Update for Microsoft Office 2016 (KB4484439) 64-Bit Edition
57	Update for Microsoft OneDrive for Business (KB4022219) 64-Bit Edition
58	Update for Microsoft OneNote 2016 (KB4484329) 64-Bit Edition
59	Update for Microsoft PowerPoint 2016 (KB4484337) 64-Bit Edition
60	Update for Microsoft Visio Viewer 2016 (KB2920709) 64-Bit Edition
61	Update for Skype for Business 2016 (KB4484326) 64-Bit Edition
62	Hotfix 3006 for SQL Server 2017 (KB4038634) (64-bit)
63	Hotfix 3035 for SQL Server 2017 (KB4293805) (64-bit)
64	Hotfix 3076 for SQL Server 2017 (KB4484710) (64-bit)
65	Hotfix 3103 for SQL Server 2017 (KB4494352) (64-bit)
66	Hotfix 3192 for SQL Server 2017 (KB4505225) (64-bit)
67	Hotfix 3335 for SQL Server 2017 (KB4557397) (64-bit)
68	Update for Microsoft Visual Studio 2015 (KB3095681)
69	Hotfix 3335 for Microsoft SQL Server VSS Writer (64-bit) (KB4557397)
70	Security Update for Adobe Flash Player (KB4561600)
71	Security Update for Microsoft Windows (KB4485447)
72	Security Update for Microsoft Windows (KB4498947)
73	Security Update for Microsoft Windows (KB4565511)

74	Security Update for Microsoft Windows (KB4565912)
75	Update for Microsoft Windows (KB2693643)
76	Update for Microsoft Windows (KB4054590)
77	Update for Microsoft Windows (KB4494175)
78	Update for (KB2504637)

### **DELL 5070 7.0 with Microsoft Windows 10 Enterprise 2016 LTSC – 2019 Image**

<b>#</b>	<b>Windows Update Description</b>
1	Hotfix 3103 for Microsoft SQL Server Brower (KB4494352)
2	Definition Update for Microsoft Office 2016 (KB3115407) 64-Bit Edition
3	Security Update for Microsoft Office 2016 (KB3085538) 64-Bit Edition
4	Security Update for Microsoft Office 2016 (KB3115135) 64-Bit Edition
5	Security Update for Microsoft Office 2016 (KB3213551) 64-Bit Edition
6	Security Update for Microsoft Office 2016 (KB4011574) 64-Bit Edition
7	Security Update for Microsoft Office 2016 (KB4022162) 64-Bit Edition
8	Security Update for Microsoft Office 2016 (KB4022172) 64-Bit Edition
9	Security Update for Microsoft Office 2016 (KB4022176) 64-Bit Edition
10	Security Update for Microsoft Office 2016 (KB4022232) 64-Bit Edition
11	Security Update for Microsoft Office 2016 (KB4464551) 64-Bit Edition
12	Security Update for Microsoft Word 2016 (KB4464536) 64-Bit Edition
13	Update for Microsoft Access 2016 (KB4462192) 64-Bit Edition
14	Update for Microsoft Excel 2016 (KB4464550) 64-Bit Edition
15	Update for Microsoft Office 2016 (KB2910954) 64-Bit Edition
16	Update for Microsoft Office 2016 (KB2920678) 64-Bit Edition
17	Update for Microsoft Office 2016 (KB2920684) 64-Bit Edition
18	Update for Microsoft Office 2016 (KB2920712) 64-Bit Edition
19	Update for Microsoft Office 2016 (KB2920717) 64-Bit Edition
20	Update for Microsoft Office 2016 (KB2920720) 64-Bit Edition

21	Update for Microsoft Office 2016 (KB2920724) 64-Bit Edition
22	Update for Microsoft Office 2016 (KB3114903) 64-Bit Edition
23	Update for Microsoft Office 2016 (KB3115081) 64-Bit Edition
24	Update for Microsoft Office 2016 (KB3115276) 64-Bit Edition
25	Update for Microsoft Office 2016 (KB3118262) 64-Bit Edition
26	Update for Microsoft Office 2016 (KB3118263) 64-Bit Edition
27	Update for Microsoft Office 2016 (KB3118264) 64-Bit Edition
28	Update for Microsoft Office 2016 (KB3178666) 64-Bit Edition
29	Update for Microsoft Office 2016 (KB3191929) 64-Bit Edition
30	Update for Microsoft Office 2016 (KB3213650) 64-Bit Edition
31	Update for Microsoft Office 2016 (KB4011035) 64-Bit Edition
32	Update for Microsoft Office 2016 (KB4011218) 64-Bit Edition
33	Update for Microsoft Office 2016 (KB4011225) 64-Bit Edition
34	Update for Microsoft Office 2016 (KB4011259) 64-Bit Edition
35	Update for Microsoft Office 2016 (KB4011634) 64-Bit Edition
36	Update for Microsoft Office 2016 (KB4011669) 64-Bit Edition
37	Update for Microsoft Office 2016 (KB4018380) 64-Bit Edition
38	Update for Microsoft Office 2016 (KB4022161) 64-Bit Edition
39	Update for Microsoft Office 2016 (KB4022193) 64-Bit Edition
40	Update for Microsoft Office 2016 (KB4461435) 64-Bit Edition
41	Update for Microsoft Office 2016 (KB4461441) 64-Bit Edition
42	Update for Microsoft Office 2016 (KB4461477) 64-Bit Edition
43	Update for Microsoft Office 2016 (KB4462116) 64-Bit Edition
44	Update for Microsoft Office 2016 (KB4462118) 64-Bit Edition
45	Update for Microsoft Office 2016 (KB4462119) 64-Bit Edition
46	Update for Microsoft Office 2016 (KB4462239) 64-Bit Edition
47	Update for Microsoft Office 2016 (KB4462243) 64-Bit Edition
48	Update for Microsoft Office 2016 (KB4464501) 64-Bit Edition

49	Update for Microsoft Office 2016 (KB4464538) 64-Bit Edition
50	Update for Microsoft Office 2016 (KB4464552) 64-Bit Edition
51	Update for Microsoft OneDrive for Business (KB4022219) 64-Bit Edition
52	Update for Microsoft OneNote 2016 (KB4022216) 64-Bit Edition
53	Update for Microsoft Outlook 2016 (KB4464540) 64-Bit Edition
54	Update for Microsoft PowerPoint 2016 (KB4464533) 64-Bit Edition
55	Update for Microsoft Project 2016 (KB4464541) 64-Bit Edition
56	Update for Microsoft Publisher 2016 (KB3178696) 64-Bit Edition
57	Update for Microsoft Visio 2016 (KB4462113) 64-Bit Edition
58	Update for Skype for Business 2016 (KB4464532) 64-Bit Edition
59	Hotfix 3006 for SQL Server 2017 (KB4038634) (64-bit)
60	Hotfix 3035 for SQL Server 2017 (KB4293805) (64-bit)
61	Hotfix 3076 for SQL Server 2017 (KB4484710) (64-bit)
62	Hotfix 3103 for SQL Server 2017 (KB4494352) (64-bit)
63	Update for Microsoft Visual Studio 2015 (KB3095681)
64	Hotfix 3103 for Microsoft SQL Server VSS Writer (64-bit) (KB4494352)
65	Security Update for Adobe Flash Player (KB4497932)
66	Security Update for Microsoft Windows (KB4485447)
67	Security Update for Microsoft Windows (KB4494440)
68	Security Update for Microsoft Windows (KB4498947)
69	Update for Microsoft Windows (KB2693643)
70	Update for Microsoft Windows (KB4054590)
71	Update for Microsoft Windows (KB4346087)
72	Update for (KB2504637)

## **DELL 5070 7.0 with Microsoft Windows 10 Enterprise 2016 LTSC – 2020/2021 Image**

#	Windows Update Description
---	----------------------------

1	Hotfix 3335 for Microsoft SQL Server Browser (KB4557397)
2	Definition Update for Microsoft Office 2016 (KB3115407) 64-Bit Edition
3	Security Update for Microsoft Access 2016 (KB4484167) 64-Bit Edition
4	Security Update for Microsoft Office 2016 (KB3085538) 64-Bit Edition
5	Security Update for Microsoft Office 2016 (KB3213551) 64-Bit Edition
6	Security Update for Microsoft Office 2016 (KB4011574) 64-Bit Edition
7	Security Update for Microsoft Office 2016 (KB4022162) 64-Bit Edition
8	Security Update for Microsoft Office 2016 (KB4022176) 64-Bit Edition
9	Security Update for Microsoft Office 2016 (KB4484258) 64-Bit Edition
10	Security Update for Microsoft Outlook 2016 (KB4484433) 64-Bit Edition
11	Security Update for Microsoft Project 2016 (KB4484441) 64-Bit Edition
12	Security Update for Microsoft Publisher 2016 (KB4011097) 64-Bit Edition
13	Security Update for Microsoft Visio 2016 (KB4484244) 64-Bit Edition
14	Security Update for Microsoft Word 2016 (KB4484438) 64-Bit Edition
15	Update for Microsoft Excel 2016 (KB4484437) 64-Bit Edition
16	Update for Microsoft Office 2016 (KB2920678) 64-Bit Edition
17	Update for Microsoft Office 2016 (KB2920712) 64-Bit Edition
18	Update for Microsoft Office 2016 (KB2920717) 64-Bit Edition
19	Update for Microsoft Office 2016 (KB2920720) 64-Bit Edition
20	Update for Microsoft Office 2016 (KB2920724) 64-Bit Edition
21	Update for Microsoft Office 2016 (KB3114528) 64-Bit Edition
22	Update for Microsoft Office 2016 (KB3114852) 64-Bit Edition
23	Update for Microsoft Office 2016 (KB3114903) 64-Bit Edition
24	Update for Microsoft Office 2016 (KB3115081) 64-Bit Edition
25	Update for Microsoft Office 2016 (KB3115276) 64-Bit Edition
26	Update for Microsoft Office 2016 (KB3118262) 64-Bit Edition

27	Update for Microsoft Office 2016 (KB3118263) 64-Bit Edition
28	Update for Microsoft Office 2016 (KB3118264) 64-Bit Edition
29	Update for Microsoft Office 2016 (KB3141456) 64-Bit Edition
30	Update for Microsoft Office 2016 (KB3178666) 64-Bit Edition
31	Update for Microsoft Office 2016 (KB3191929) 64-Bit Edition
32	Update for Microsoft Office 2016 (KB3213650) 64-Bit Edition
33	Update for Microsoft Office 2016 (KB4011035) 64-Bit Edition
34	Update for Microsoft Office 2016 (KB4011225) 64-Bit Edition
35	Update for Microsoft Office 2016 (KB4011259) 64-Bit Edition
36	Update for Microsoft Office 2016 (KB4011629) 64-Bit Edition
37	Update for Microsoft Office 2016 (KB4011634) 64-Bit Edition
38	Update for Microsoft Office 2016 (KB4011669) 64-Bit Edition
39	Update for Microsoft Office 2016 (KB4022161) 64-Bit Edition
40	Update for Microsoft Office 2016 (KB4022193) 64-Bit Edition
41	Update for Microsoft Office 2016 (KB4032254) 64-Bit Edition
42	Update for Microsoft Office 2016 (KB4461435) 64-Bit Edition
43	Update for Microsoft Office 2016 (KB4462119) 64-Bit Edition
44	Update for Microsoft Office 2016 (KB4464535) 64-Bit Edition
45	Update for Microsoft Office 2016 (KB4464538) 64-Bit Edition
46	Update for Microsoft Office 2016 (KB4464586) 64-Bit Edition
47	Update for Microsoft Office 2016 (KB4475580) 64-Bit Edition
48	Update for Microsoft Office 2016 (KB4484145) 64-Bit Edition
49	Update for Microsoft Office 2016 (KB4484171) 64-Bit Edition
50	Update for Microsoft Office 2016 (KB4484174) 64-Bit Edition
51	Update for Microsoft Office 2016 (KB4484327) 64-Bit Edition
52	Update for Microsoft Office 2016 (KB4484328) 64-Bit Edition

53	Update for Microsoft Office 2016 (KB4484335) 64-Bit Edition
54	Update for Microsoft Office 2016 (KB4484392) 64-Bit Edition
55	Update for Microsoft Office 2016 (KB4484394) 64-Bit Edition
56	Update for Microsoft Office 2016 (KB4484439) 64-Bit Edition
57	Update for Microsoft OneDrive for Business (KB4022219) 64-Bit Edition
58	Update for Microsoft OneNote 2016 (KB4484329) 64-Bit Edition
59	Update for Microsoft PowerPoint 2016 (KB4484337) 64-Bit Edition
60	Update for Microsoft Visio Viewer 2016 (KB2920709) 64-Bit Edition
61	Update for Skype for Business 2016 (KB4484326) 64-Bit Edition
62	Hotfix 3006 for SQL Server 2017 (KB4038634) (64-bit)
63	Hotfix 3035 for SQL Server 2017 (KB4293805) (64-bit)
64	Hotfix 3076 for SQL Server 2017 (KB4484710) (64-bit)
65	Hotfix 3103 for SQL Server 2017 (KB4494352) (64-bit)
66	Hotfix 3192 for SQL Server 2017 (KB4505225) (64-bit)
67	Hotfix 3335 for SQL Server 2017 (KB4557397) (64-bit)
68	Update for Microsoft Visual Studio 2015 (KB3095681)
69	Hotfix 3335 for Microsoft SQL Server VSS Writer (64-bit) (KB4557397)
70	Security Update for Adobe Flash Player (KB4561600)
71	Security Update for Microsoft Windows (KB4485447)
72	Security Update for Microsoft Windows (KB4498947)
73	Security Update for Microsoft Windows (KB4565511)
74	Security Update for Microsoft Windows (KB4565912)
75	Update for Microsoft Windows (KB2693643)
76	Update for Microsoft Windows (KB4054590)
77	Update for Microsoft Windows (KB4494175)
78	Update for (KB2504637)

## DELL 7080 7.0 with Microsoft Windows 10 Enterprise LTSC 2018

#	Windows Update Description
1	Definition Update for Microsoft Office 2016 (KB3115407) 64-Bit Edition
2	Hotfix 3370 for SQL Server 2017 (KB4583457) (64-bit)
3	Hotfix 3381 for Microsoft SQL Server Browser (KB5000685)
4	Hotfix 3381 for Microsoft SQL Server VSS Writer (64-bit) (KB5000685)
5	Hotfix 3381 for SQL Server 2017 (KB5000685) (64-bit)
6	Microsoft .NET Framework 4 KB2468871
7	Microsoft .NET Framework 4 KB2468871v2
8	Microsoft .NET Framework 4 KB2478063
9	Microsoft .NET Framework 4 KB2504637
10	Microsoft .NET Framework 4 KB2533523
11	Microsoft .NET Framework 4 KB2544514
12	Microsoft .NET Framework 4 KB2600211
13	Microsoft .NET Framework 4 KB2600217
14	Security Update for Microsoft Access 2016 (KB4484509) 64-Bit Edition
15	Security Update for Microsoft Office 2016 (KB3085538) 64-Bit Edition
16	Security Update for Microsoft Office 2016 (KB3213551) 64-Bit Edition
17	Security Update for Microsoft Office 2016 (KB4022162) 64-Bit Edition
18	Security Update for Microsoft Office 2016 (KB4022176) 64-Bit Edition
19	Security Update for Microsoft Office 2016 (KB4486755) 64-Bit Edition
20	Security Update for Microsoft Office 2016 (KB4493168) 64-Bit Edition
21	Security Update for Microsoft Office 2016 (KB4011574) 64-Bit Edition
22	Security Update for Microsoft Windows (KB4601345)
23	Security Update for Microsoft Windows (KB4601393)
24	Security Update for Microsoft Word 2016 (KB4493156) 64-Bit Edition
25	Update for (KB2504637)

26	Update for Microsoft Excel 2016 (KB4493196) 64-Bit Edition
27	Update for Microsoft Office 2016 (KB2920678) 64-Bit Edition
28	Update for Microsoft Office 2016 (KB2920712) 64-Bit Edition
29	Update for Microsoft Office 2016 (KB2920717) 64-Bit Edition
30	Update for Microsoft Office 2016 (KB2920720) 64-Bit Edition
31	Update for Microsoft Office 2016 (KB2920724) 64-Bit Edition
32	Update for Microsoft Office 2016 (KB3114852) 64-Bit Edition
33	Update for Microsoft Office 2016 (KB3114903) 64-Bit Edition
34	Update for Microsoft Office 2016 (KB3115081) 64-Bit Edition
35	Update for Microsoft Office 2016 (KB3115276) 64-Bit Edition
36	Update for Microsoft Office 2016 (KB3118262) 64-Bit Edition
37	Update for Microsoft Office 2016 (KB3118263) 64-Bit Edition
38	Update for Microsoft Office 2016 (KB3118264) 64-Bit Edition
39	Update for Microsoft Office 2016 (KB3141456) 64-Bit Edition
40	Update for Microsoft Office 2016 (KB3178666) 64-Bit Edition
41	Update for Microsoft Office 2016 (KB3191929) 64-Bit Edition
42	Update for Microsoft Office 2016 (KB3213650) 64-Bit Edition
43	Update for Microsoft Office 2016 (KB4011035) 64-Bit Edition
44	Update for Microsoft Office 2016 (KB4011225) 64-Bit Edition
45	Update for Microsoft Office 2016 (KB4011259) 64-Bit Edition
46	Update for Microsoft Office 2016 (KB4011629) 64-Bit Edition
47	Update for Microsoft Office 2016 (KB4011634) 64-Bit Edition
48	Update for Microsoft Office 2016 (KB4011669) 64-Bit Edition
49	Update for Microsoft Office 2016 (KB4022161) 64-Bit Edition
50	Update for Microsoft Office 2016 (KB4022193) 64-Bit Edition
51	Update for Microsoft Office 2016 (KB4032254) 64-Bit Edition
52	Update for Microsoft Office 2016 (KB4461435) 64-Bit Edition

53	Update for Microsoft Office 2016 (KB4462119) 64-Bit Edition
54	Update for Microsoft Office 2016 (KB4464535) 64-Bit Edition
55	Update for Microsoft Office 2016 (KB4464538) 64-Bit Edition
56	Update for Microsoft Office 2016 (KB4475580) 64-Bit Edition
57	Update for Microsoft Office 2016 (KB4475584) 64-Bit Edition
58	Update for Microsoft Office 2016 (KB4484145) 64-Bit Edition
59	Update for Microsoft Office 2016 (KB4484171) 64-Bit Edition
60	Update for Microsoft Office 2016 (KB4484174) 64-Bit Edition
61	Update for Microsoft Office 2016 (KB4484251) 64-Bit Edition
62	Update for Microsoft Office 2016 (KB4484395) 64-Bit Edition
63	Update for Microsoft Office 2016 (KB4486668) 64-Bit Edition
64	Update for Microsoft Office 2016 (KB4486716) 64-Bit Edition
65	Update for Microsoft Office 2016 (KB4486747) 64-Bit Edition
66	Update for Microsoft Office 2016 (KB4493189) 64-Bit Edition
67	Update for Microsoft OneDrive for Business (KB4022219) 64-Bit Edition
68	Update for Microsoft OneNote 2016 (KB4484329) 64-Bit Edition
69	Update for Microsoft Outlook 2016 (KB4493190) 64-Bit Edition
70	Update for Microsoft PowerPoint 2016 (KB4493164) 64-Bit Edition
71	Update for Microsoft Project 2016 (KB4493159) 64-Bit Edition
72	Update for Microsoft Publisher 2016 (KB4484334) 64-Bit Edition
73	Update for Microsoft Visio 2016 (KB4486709) 64-Bit Edition
74	Update for Microsoft Visio Viewer 2016 (KB2920709) 64-Bit Edition
75	Update for Microsoft Visual Studio 2015 (KB3095681)
76	Update for Microsoft Windows (KB2693643)
77	Update for Microsoft Windows (KB4601060)
78	Update for Removal of Adobe Flash Player (KB4577586)
79	Update for Skype for Business 2016 (KB4486745) 64-Bit Edition



## Contact Information

If you have any additional questions, please contact our Technical Support Department.