



VividTM
for Pediatrics
Ultra Edition

Your patients rely on you.
You can rely on us.



GE HealthCare



Address the needs of your most challenging patients

The smallest cardiac patients are often the most challenging.

To help you visualize small anatomies and understand the relationship between different structures, the Vivid Ultra Edition delivers superb 2D & 4D TTE & TEE images and dedicated pediatric applications.

Today's challenges



1.5~2 million
children born with CHD¹



More **complex**

The pediatric heart is more variable and complex in terms of morphology and appearance than the adult heart¹



CHD

is the leading cause of death from congenital malformations²



10%

of pediatric echo diagnostic errors are due to misleading anatomy or physiology²

Discover the latest image quality and automation in

Vivid Ultra Edition*



Vivid E95

Vivid S70N

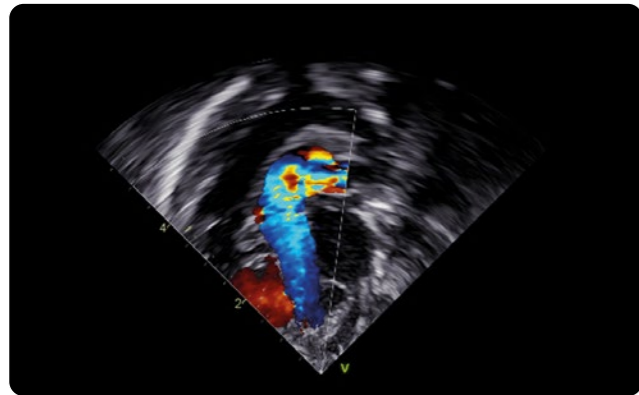
Vivid T9

Vivid iq

Rely on us for superb image quality

Because your patients' age range is wide and your imaging needs vary depending on patient size and pathology, we developed a complete set of transducers adapted to each of patient, from premature babies to young adults.

Vivid Ultra Edition³ allows you to get exceptional images from all your pediatric patients to help you make better diagnoses with greater confidence.



10T-D Micro-TEE Probe

The Micro multi-plane TEE probe enables you to achieve high diagnostic confidence, even under the most complex conditions on the neonatal heart of patients > 2.5 kg.

For patients from
2.5 kg

Rely on us for breakthrough innovation

Most Compact
mini 4D TEE-probe³

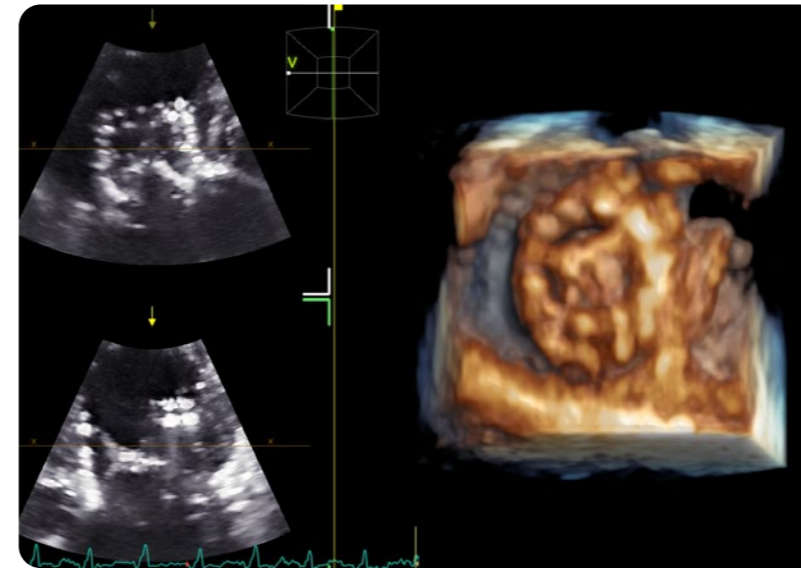
1st 
4D TEE probe
designed for
small children³



9VT-D probe

The world's most compact mini 4D TEE-probe and the first 4D TEE probe designed with small children in mind introduced with the latest release of Vivid Ultra Edition³. It provides:

- Generation of a set of ultrasound images or slices within a cone from the same position in the esophagus
- Real-time multi-plane image acquisition (bi-plane and tri-plane) as well as single and multi-beat volumetric data for three-dimensional visualization of cardiac structures and flow

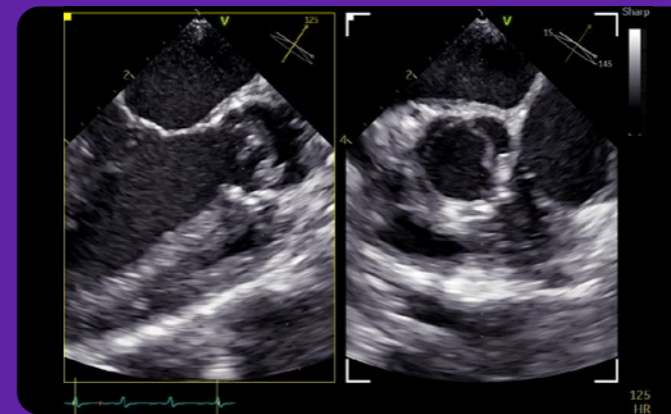


6Vc-D

A lightweight probe solution that provides excellent 2D and multi-plane 4D imaging:

- Uncompromising 2D detail and contrast resolution, Color Doppler, TVI, Live Anatomical M-Mode, PW-Doppler, CW-Doppler, Triplex Mode, Live bi-plane and Live tri-plane
- Single-beat 4D and 4D color with ultrahigh volume rates when the full volume is acquired
- Excellent ergonomics (weighs 72 grams)

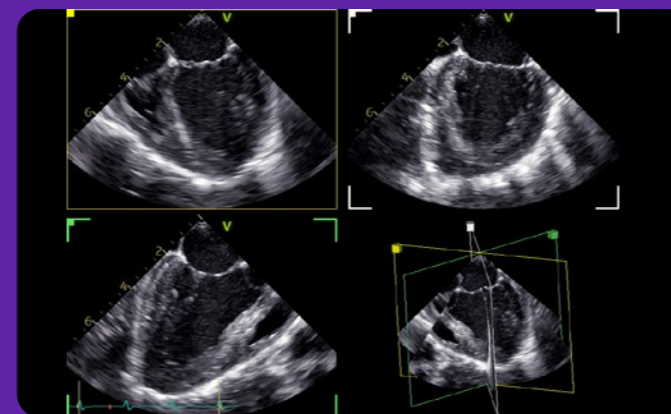
For patients from
500 g to 40 kg



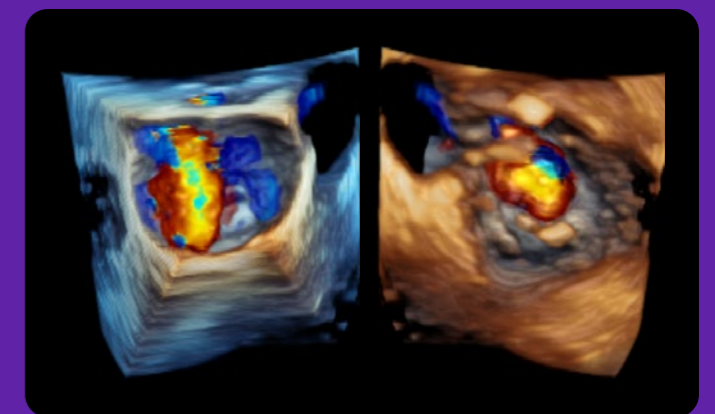
Bi-plane view of AV prolapse on a 10kg patient undergoing surgery



4D image of a catheter on 48kg patient in the EP lab



Tri-plane LV image on a 10kg patient undergoing surgery

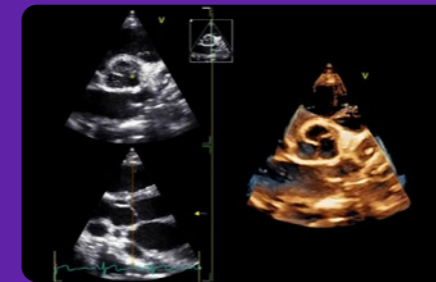
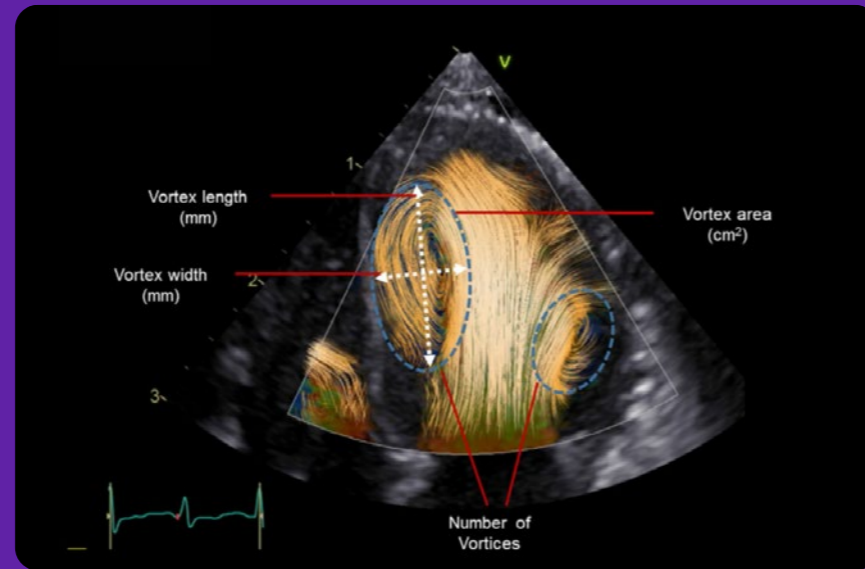


4D Color Dual view of MR upon follow up in the EchoLab

Rely on us for clinical expertise

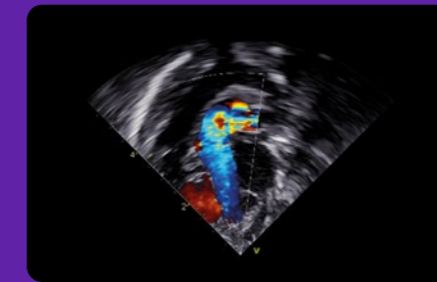
BSI 2.0 – Blood Speckle Imaging

Quickly understand complex flow patterns by reducing the angle dependency and aliasing problems. Left ventricle vortex formation and size can be analyzed with BSI 2.0 and has the potential to complement existing parameters of cardiac health.



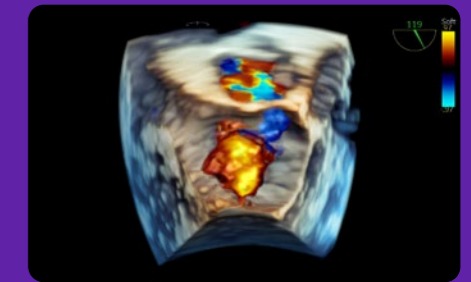
6Vc-D Volume Probe - HDlive™

Provides high-resolution, realistic 4D images of cardiac structures and blood flow.



10T-D – Neonatal TEE

Supports 2D and Color Flow, M-Mode, PW, CW (including Triplex) and TVI-Mode.



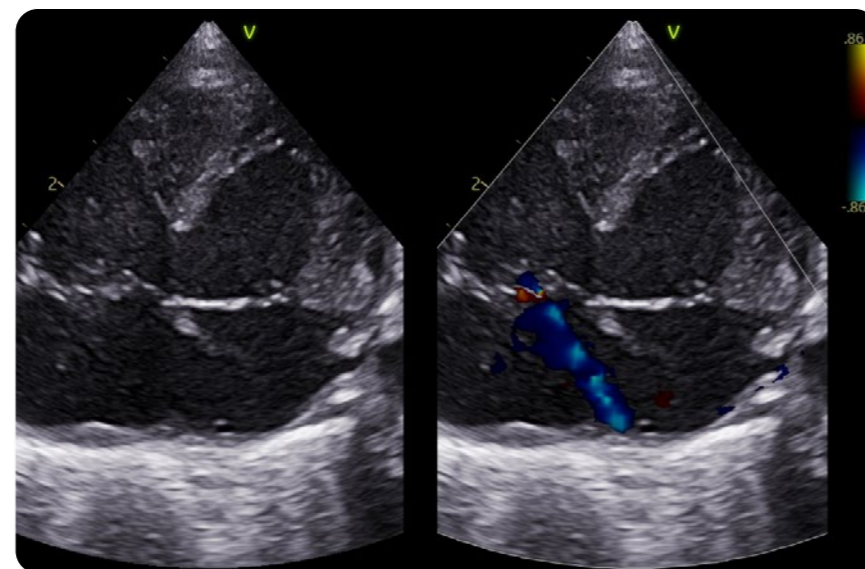
9VT-D

Supports real time multi-plane and 4D imaging.

Rely on us for the critical moments

NICU-friendly

Check our Vivid Ultra Edition portfolio to get to know our portable and small footprint solutions.



12S-D probe
Tricuspid regurgitation visualized in simultaneous mode on a neonate of 2.3 kg

EchoPAC™ Connect† – Post Processing & Reporting

Fast workflow

Fully integrated and featuring Open4D to assess & quantify 3D volumes from multivendor equipment fleets

State-of-the-art accuracy

Full access to all Vivid tools – from AI-simplified routine measurements to the most advanced ones (MyoCardial Work)

Comfortable experience

Familiar interface with ergonomic comfort



Upgrade your ultrasound experience with **EchoPAC Connect**† today.

References:

* Ultra Edition is not a product name, it refers to the 2022 release of the Vivid portfolio.

1. YUJIN HU et.al. | AIDAN: An Attention-Guided Dual-Path Network for Pediatric Echocardiography Segmentation | Source <https://ieeexplore.ieee.org/abstract/document/8979379>
2. Oscar J. Benavidez et.al. | Diagnostic Errors in Pediatric Echocardiography Development of Taxonomy and Identification of Risk Factors | <https://www.ahajournals.org/doi/full/10.1161/CIRCULATIONAHA.107.758532>
3. The content herein refers to 2022 release of Vivid portfolio. 9VT-D probe is exclusively available for E95 and E90. Vivid Ultra Edition is released as of 25th August 2022

About GE HealthCare

GE HealthCare is a leading global medical technology, pharmaceutical diagnostics, and digital solutions innovator, dedicated to providing integrated solutions, services, and data analytics to make hospitals more efficient, clinicians more effective, therapies more precise, and patients healthier and happier. Serving patients and providers for more than 100 years, GE HealthCare is advancing personalized, connected, and compassionate care, while simplifying the patient's journey across the care pathway. Together our Imaging, Ultrasound, Patient Care Solutions, and Pharmaceutical Diagnostics businesses help improve patient care from prevention and screening, to diagnosis, treatment, therapy, and monitoring. We are an \$18 billion business with 51,000 employees working to create a world where healthcare has no limits.

Follow us on [Facebook](#), [LinkedIn](#), [Twitter](#), [Instagram](#) and [Insights](#) for the latest news, or visit our website gehealthcare.com for more information.

Products mentioned in the material may be subject to government regulations and may not be available in all countries. Shipment and effective sale can only occur after approval from the regulator. Please check with local GE HealthCare representative for details.

© 2024 GE HealthCare. Vivid, HDI/ive and EchoPAC are trademarks of GE HealthCare. GE is a trademark of General Electric Company used under trademark license.

Ultra Edition is not a product name, it refers to the 2022 release of the Vivid portfolio.

Third party trademarks are the property of their respective owners.

April 2024
JB20790XX



GE HealthCare