

# LOGIQ e S<sup>o</sup>

Essential ultrasound imaging capabilities in a compact system for anywhere care is delivered\*



# Simple. Fast. Confident. Anywhere.

Designed for multi-purpose imaging, LOGIQ™ e S empowers clinicians with the simplicity, speed and confidence to deliver high-quality care in today's most dynamic environments; whether at the bedside, in the clinic or from room to room.

## LOGIQ e S

A scalable system offering a tailored solution for clinicians and multi-purpose imaging environments, LOGIQ e S combines the power of a console with the portability of a laptop. LOGIQ e S delivers essential imaging capabilities in a system that's intuitive, reliable and ready to support both point of care and multi-purpose imaging at a more affordable price point. Combining the core performance of the LOGIQ e platform with streamlined features that align with daily clinical workflows, the LOGIQ e S makes it easy to learn, simple to operate and ideal for consistent, confident scanning across care settings. Plus, the compact footprint easily navigates smaller spaces.

LOGIQ e S is compatible with a variety of probes, such as, the high-quality L4-12t-RS linear array probe and C1-5-RS convex array probe. These probes are designed to help you deliver patient centered care in many different care environments. You can also use our probe port connector, a hardware accessory that enables connection of two or three ultrasound probes to a single system. This allows seamless switching between probes without disconnecting to enhance productivity during multi-modality imaging.



# More capable. More versatile. More portable.

The LOGIQ e S delivers simplicity, speed and confidence in a compact laptop design. From complex exams to routine assessments, LOGIQ e S supports clinical precision without compromising usability.

## Simple

With intuitive controls, ergonomic design and a simple-to-use trackball, LOGIQ e S is easy to learn and operate across experience levels, whether you're scanning in a busy clinic, at the bedside or in a remote setting. Choose from compact cart options, one offering height adjustment and long battery life for enhanced flexibility or one with a fixed-height design. Plus, two- or three-port connectivity further simplifies workflow during scanning, helping clinicians stay focused on care — not complexity.

### New features



#### Cart options

Choose from two compact cart options — one with height adjustment and extended battery for enhanced flexibility, and one with a fixed-height design for streamlined simplicity — both featuring a small footprint and generous wrist support for comfortable, mobile scanning.



#### Two-/three-probe port connector

This accessory enables the connection of two or three ultrasound probes to a single system — allowing seamless switching between probes without disconnecting, enhancing workflow efficiency and flexibility during multi-modality imaging.



#### Enhanced ergonomics

LOGIQ e S features a superior design for easy and functional operation. Featuring laptop-style portability with a low-noise fan, improved battery life and intuitive control layout, it's built for quiet, comfortable scanning.



#### Dual batteries

Designed for dynamic clinical environments, dual batteries offer extended operation for uninterrupted workflow and enhanced flexibility. Designed for dynamic clinical environments, dual batteries offer extended operation (approximately 45 to 90 minutes on the console) for uninterrupted workflow and enhanced flexibility.



# Fast

With automation, Voice Control and remote fleet management, LOGIQ e S is designed to keep pace with high-volume environments. Engineered for speed with rapid boot-up and productivity tools like Scan Assistant and Voice Control, LOGIQ e S enables clinicians to move quickly through exams, reduce wait times and improve throughput. Through Verisound™ digital tools like Verisound Fleet<sup>1</sup>, the cloud-based fleet management solution empowers teams to remotely view, back up and deploy device configurations across multiple locations — all without leaving their desks.

## New features



### Voice Control

Activates system functions using simple voice commands<sup>†</sup> — enhancing workflow, reducing keystrokes and supporting sterility and ergonomics in busy clinical settings.



### Verisound Fleet<sup>1</sup>

Cloud-based fleet management solution that empowers clinical and healthcare technology teams to remotely view, back up and deploy device configurations across multiple locations, all without leaving their desks.



### Verisound Collab<sup>1†</sup>

Enables real-time tele-mentoring that lets clinicians easily collaborate throughout their network, no matter where they're located.



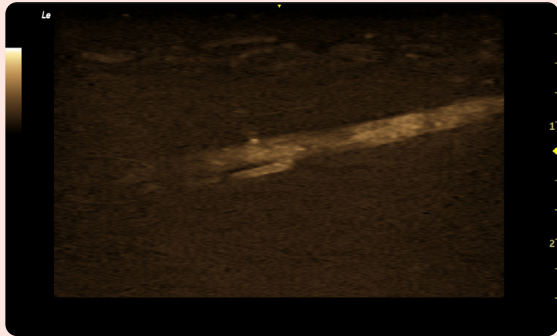
# Confident

Offering high-quality imaging for confident diagnoses, procedures and monitoring, LOGIQ e S delivers the clarity, control and collaboration clinicians need to make informed decisions across a wide range of applications. Its high-performance imaging engine and expanded probe compatibility provide exceptional image quality.

## New features

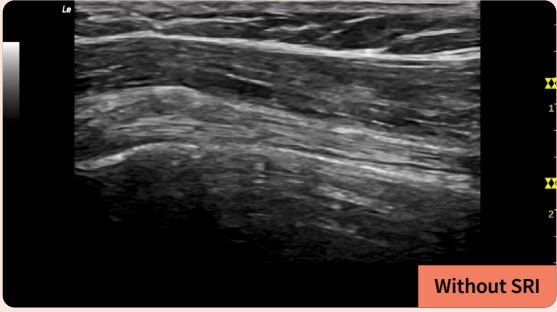
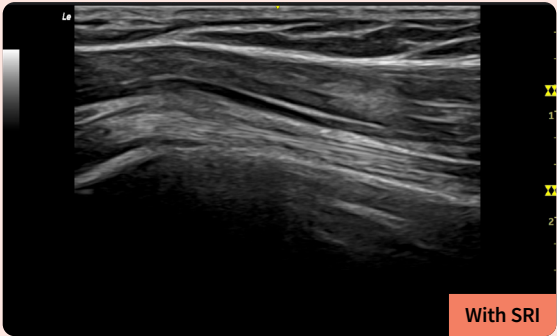
### B-Flow

Delivers real-time, high-resolution blood flow visualization without the limitation of Doppler images. It provides clear, angle-independent visualization of small vessels for confident assessment of flow dynamics and vascular lesions.



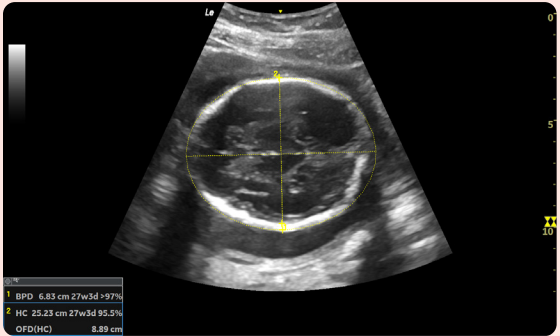
### Speckle Reduction Imaging (SRI) – HD

Enhances visibility of organs and lesions with high-definition contrast resolution that suppresses speckle artifacts while preserving true tissue architecture. In a GE HealthCare-conducted comparative evaluation, 100% of reviewers rated SRI-HD on LOGIQ e superior for fluid detectability versus prior SRI-HD versions, helping clinicians achieve clearer visualization of fluid.<sup>2</sup>



### SonoBiometry

Performs semi-automatic measurements of fetal head, abdomen and femur. SonoBiometry on LOGIQ e demonstrated a 37% reduction in manual steps for key obstetric measurements (BPD and FL) helping to streamline workflows and support a more consistent assessment clinicians can feel confident in.<sup>3</sup>





### Probe compatibility

Experience maximum clinical versatility with a wide range of probe compatibility:



#### C1-5-RS

Easy to use, durable and designed to withstand the rigor of daily use in a clinical setting while offering a wide field of view and excellent detail resolution.



#### L4-12t-RS

High-quality ultrasound probe that provides clear and detailed images of small parts (such as the breast, thyroid and musculoskeletal system).



#### L8-18i-RS

Wide-band linear array ultrasound probe with unparalleled image clarity and high-resolution imaging capabilities.



#### IC9-RS

Wide-band microconvex intercavity probe offering high-quality imaging and advanced features in a compact design, ideal for a range of clinical applications.

# One system, multiple specialties

From OB/GYN and cardiac to GI and more, the LOGIQ e S is ideal for multi-purpose imaging environments — helping facilities maximize value, reduce redundancy and streamline care delivery. It empowers clinicians with console-level capabilities wherever care is delivered; bedside, clinic or beyond in anesthesiology, musculoskeletal and general care.



## Multi-purpose imaging

Designed to support a full spectrum of clinical needs — including OB/GYN, cardiac, radiology/GI and more. One system covers multiple specialties, helping facilities get more value from their investment, reduce equipment overlap and improve care delivery.



## Vascular

LOGIQ e S provides detailed vascular visualization and needle guidance to support accurate placement during a variety of procedures.



## MSK and sports medicine

LOGIQ e S brings together specialized MSK transducers and advanced imaging tools to help clinicians pinpoint pain sources, deliver targeted, precise interventions, and track recovery.



## Rheumatology

Image fusion and quantification tools bring consistency and objectivity to patient evaluations. LOGIQ e S helps clinicians track disease progression and treat toward remission with confidence and reproducibility.



## Emergency medicine

In fast-paced, high-volume ED environments, LOGIQ e S delivers speed, clarity and portability. Rapid boot-up and intuitive controls enable clinicians to scan quickly and accurately — supporting faster triage and better patient outcomes when every second counts.



## Critical care

LOGIQ e S supports rapid, confident decision-making with high-resolution imaging, fast boot-up and intuitive controls. Its compact design and extended battery life make it ideal for bedside assessments, while advanced imaging features help clinicians quickly and confidently evaluate a variety of patient conditions.



## Anesthesiology\*\* and perioperative

Combining high-resolution imaging with advanced needle guidance and visualization tools, LOGIQ e S helps anesthesiologists perform precise, efficient procedures with greater confidence and less manual effort.



## Maximize your investment

LOGIQ e S delivers the trusted quality of GE HealthCare service, with system updates available remotely and at times that best fit your workflow — including off-peak hours. This helps clinicians across care settings maintain consistent performance and maximize equipment uptime, all with minimal operational disruption. Remote updates occur when you choose, supporting smooth day-to-day operations and helping keep your system performing at its best.

## About GE HealthCare Technologies Inc.

GE HealthCare is a trusted partner and leading global healthcare solutions provider, innovating medical technology, pharmaceutical diagnostics, and integrated, cloud-first AI-enabled solutions, services and data analytics. We aim to make hospitals and health systems more efficient, clinicians more effective, therapies more precise, and patients healthier and happier. Serving patients and providers for more than 125 years, GE HealthCare is advancing personalized, connected and compassionate care, while simplifying the patient's journey across care pathways. Together, our Imaging, Advanced Visualization Solutions, Patient Care Solutions and Pharmaceutical Diagnostics businesses help improve patient care from screening and diagnosis to therapy and monitoring. We are a \$19.7 billion business with approximately 53,000 colleagues working to create a world where healthcare has no limits.

Follow us on [LinkedIn](#), [X](#), [Facebook](#), [Instagram](#), and [Insights](#) for the latest news, or visit our website [gehealthcare.com/en](https://gehealthcare.com/en) for more information.

## Learn more about LOGIQ e S

Portable ultrasound delivering clinical precision where care is delivered.

### Disclaimers:

◇ LOGIQ e S is a marketing representation of the LOGIQ e product; feature availability may vary depending on region.

\* The device is intended for use in professional healthcare facilities. Use is restricted to environmental properties described in the user manual.

\*\*The device is indicated for use in regional anesthesia care environments, including multiple clinical settings, including operating theatres, emergency rooms, and general wards.

† Voice Control currently supports English, Chinese, Latin American Spanish, Swedish, German, Italian, French, Russian, Greek, Brazilian Portuguese, Dutch and Japanese.

‡ Verisound Collab is the new product name for Digital Expert Connect.

### References:

1. Not available for products in all regions. Not for diagnostic use.
2. Based on a 2025 GE HealthCare-conducted internal reader study on SRI-HD comparison with previous version. DOC3299807.
3. Based on a 2025 GE HealthCare-conducted internal reader study on SonoBiometry comparison with manual assessment. DOC3299807.



Products mentioned in the material may be subject to government regulations and may not be available in all countries. Products mentioned in the material may not be compatible with all LOGIQ e-Series models. Shipment and effective sale can only occur after approval from the regulator. Please check with your local GE HealthCare representative for details.

© 2026 GE HealthCare. LOGIQ and Verisound are trademarks of GE HealthCare. GE is a trademark of General Electric Company used under trademark license.

March 2026  
JB36692XX