



GE HealthCare

# Case Study

## Ischemia detection with Flyrcado



Flyrcado™ (flurpiridaz F 18) injection

# Ischemia detection with Flyrcado



## Dr. Arthur Braat

Nuclear Medicine Physician  
University Medical Center Utrecht,  
The Netherlands



## Dr. Marjolein Hol

Nuclear Medicine Physician  
University Medical Center Utrecht,  
The Netherlands

## Patient Medical History

Gender	Male
Age	59 years
BMI	21.7
Risk factors	Hypercholesterolemia
History	No relevant medical history

### Medical history of the patient

The patient presented with asymptomatic premature ventricular contractions (PVCs), incidentally discovered during a medical examination. Holter monitoring revealed a PVC burden of 10.6%. There were no complaints of chest pain or palpitations. The ECG showed minor Q waves in the inferior leads.

### Pre-diagnostics

No prior cardiac imaging has been performed.

### Indication

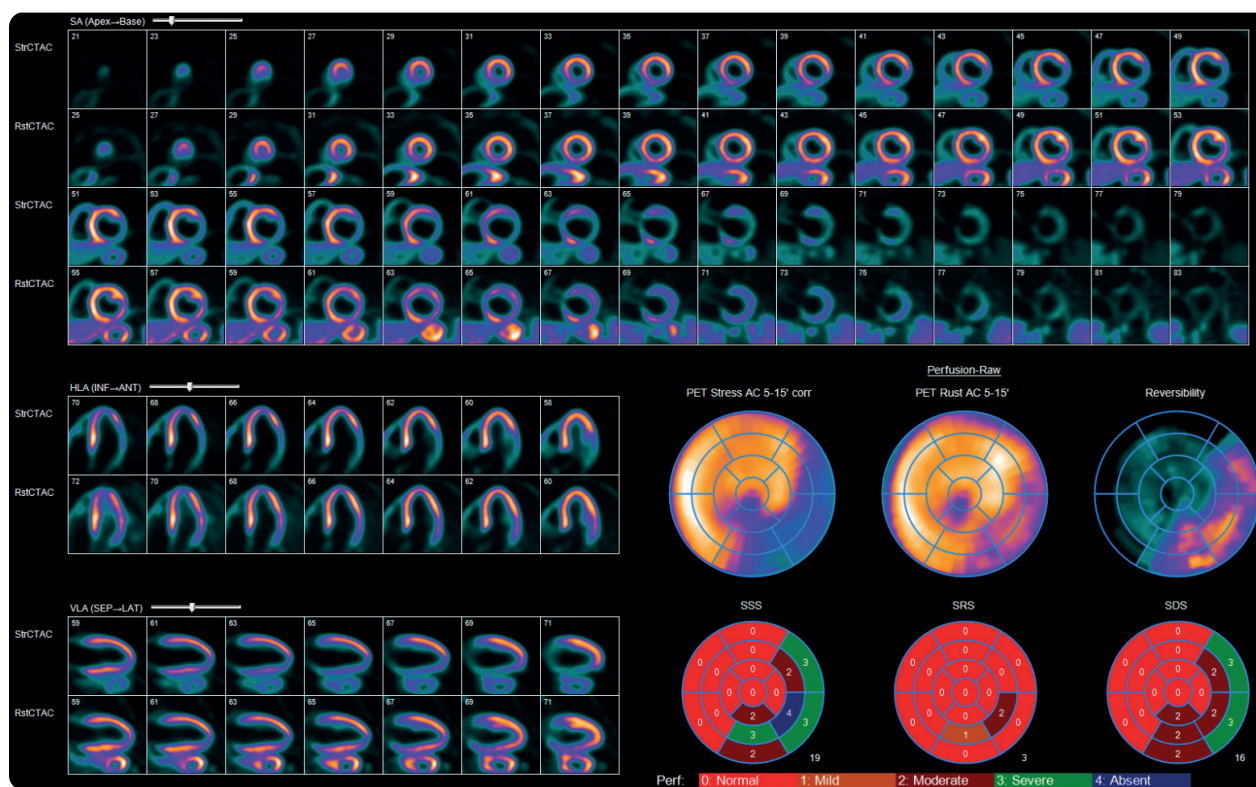
Flyrcado PET is indicated in this case to assess myocardial perfusion and evaluate for underlying ischemia or prior infarction, given the presence of inferior Q waves, slight hypokinesia of the inferior wall on echocardiography, and a significant PVC burden.

*Images and content presented here are courtesy of Dr. Arthur Braat and Dr. Marjolein Hol*

# Imaging

## PET MPI

Rest-stress pharmacologic protocol with CT attenuation



A perfusion defect is observed in the inferolateral wall during stress imaging. The defect is partially irreversible, as evident on rest images.

## Imaging findings

A perfusion defect is observed in the inferolateral wall during stress imaging, which is partially irreversible. Findings are suggestive of ischemia in the circumflex territory with limited infarction.

## Diagnosis

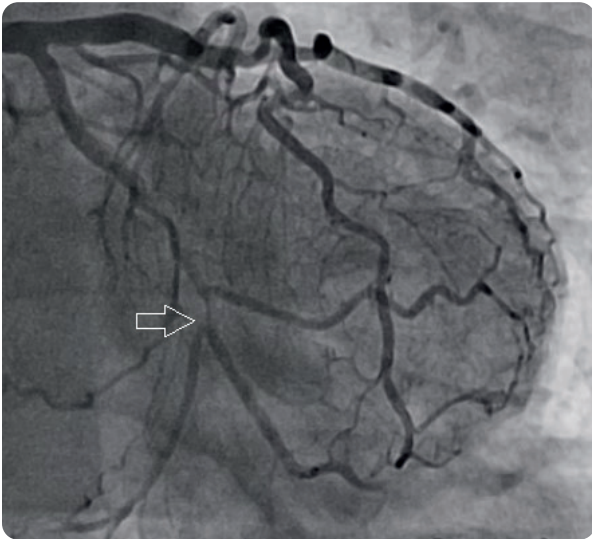
Findings are consistent with ischemia in the territory of the circumflex artery.

Flyrcado™ (flurpiridaz F 18) injection

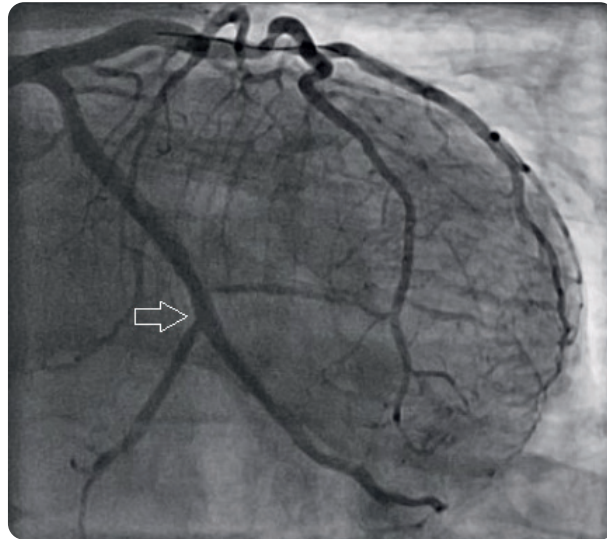
## Ischemia detection with Flyrcado

# Therapy/Follow up

Coronary angiography demonstrated a pinpoint stenosis in the left circumflex artery. Percutaneous coronary intervention (PCI) was performed with a good outcome.



Pre PCI



Post PCI

This case represents an example of a patient with ischemia.

## Key takeaways:

- Precise localization of ischemia
  - Flyrcado PET offered a precise assessment of ischemic territory, helping guide coronary angiography and PCI.
- Guiding PCI intervention decisions
  - Flyrcado PET could help differentiate between reversible ischemia and irreversible infarction, guiding the decision to proceed with PCI.

## IMPORTANT SAFETY INFORMATION

### Indications and Usage

FLYRCADO is a radioactive diagnostic drug indicated for positron emission tomography (PET) myocardial perfusion imaging (MPI) under rest or stress (pharmacologic or exercise) in adult patients with known or suspected coronary artery disease (CAD) to evaluate for myocardial ischemia and infarction.

### Contraindications

None

### Warnings and Precautions

- Risk associated with exercise or pharmacologic stress: Patients evaluated with exercise or pharmacologic stress may experience serious adverse reactions such as myocardial infarction, arrhythmia, hypotension, bronchoconstriction, stroke, and seizure. Perform stress testing in the setting where cardiac resuscitation equipment and trained staff are readily available. When pharmacologic stress is selected as an alternative to exercise, perform the procedure in accordance with the pharmacologic stress agent's prescribing information.
- Radiation risks: FLYRCADO contributes to a patient's overall long-term cumulative radiation exposure. Long-term cumulative radiation exposure is associated with an increased risk of cancer. Ensure safe handling to minimize radiation exposure to patients and health care providers. Advise patients to hydrate before and after administration and to void.

### Adverse Reactions

- Most common adverse reactions occurring during FLYRCADO PET MPI under rest and stress (pharmacologic or exercise) (incidence  $\geq$  2%) are dyspnea, headache, angina pectoris, chest pain, fatigue, ST segment changes, flushing, nausea, abdominal pain, dizziness, and arrhythmia.

### Use in Specific Populations

**Pregnancy:** There are no data on use of flurpiridaz F 18 in pregnant women to evaluate for a drug-associated risk of major birth defects, miscarriage, or other adverse maternal or fetal outcomes. If considering FLYRCADO administration to a pregnant woman, inform the patient about the potential for adverse pregnancy outcomes based on the radiation dose from flurpiridaz F 18 and the gestational timing of exposure. FLYRCADO contains ethanol (a maximum daily dose of 337 mg anhydrous ethanol). If considering FLYRCADO administration to a pregnant woman, inform the patient about the potential for adverse pregnancy outcomes associated with ethanol exposure during pregnancy.

**Lactation:** Temporarily discontinue breastfeeding. A lactating woman should pump and discard breastmilk for at least 8 hours after FLYRCADO administration.

**Pediatric Use:** Safety and effectiveness of FLYRCADO in pediatric patients have not been established.

To report SUSPECTED ADVERSE REACTIONS, contact GE HealthCare at 800-654-0118 (option 2 then option 1) or by email at [GPV.drugsafety@gehealthcare.com](mailto:GPV.drugsafety@gehealthcare.com) or FDA at 800-FDA-1088 or [www.fda.gov/medwatch](http://www.fda.gov/medwatch).

Flyrcado Reimbursement Support Line: 800 729 0701

Medical Affairs: 800 654 0118  
(option 2, then option 3) or  
[medical.affairs@gehealthcare.com](mailto:medical.affairs@gehealthcare.com)

Customer Service: 800 292 8514  
[gehealthcare.com](http://gehealthcare.com)



© 2025 GE HealthCare

Flyrcado is a trademark of GE HealthCare.

GE is a trademark of General Electric Company used under trademark license.

July 2025 JB11988US