

# Mac-Lab™ | CardioLab™ | ComboLab Security

Improving cardiology by securely integrating into your ecosystem

A secure solution for hemodynamic and electrophysiology recording needs, Mac-Lab, CardioLab, and ComboLab are designed for maximum protection. GE HealthCare's in-depth security strategy incorporates multiple independent security controls deployed through connected pieces working together. This keeps your system functional in the face of cyber threats, protects patient data from unauthorized access, and implements HIPAA and security policies without interrupting workflow.

## Designed to fit your hospital

Cyberattacks on hospitals are only increasing and vulnerabilities can exist in any department. That's why it's vital for hemodynamic and electrophysiology recording to have in-depth protection. Connecting to the backbone of a hospital's IT infrastructure, Mac-Lab, CardioLab, and ComboLab are designed for enhanced security while delivering the clinical functionality and workflow you require.

## Flexible—but secure

Built for simplicity and flexibility, these systems operate in a manner that gives hospitals a large amount of control. We provide hospitals with robust insight into the technology's security through a standard called MDS2 (Manufacturer Disclosure Statement for Medical Device Security). This gives you a full overview of security. In addition, GE HealthCare's field teams are ready to support your IT department to install and configure these systems and an intuitive and accessible security portal helps keep hospitals up to date on the latest patches and firmware.



## In-depth protection

These systems give you more freedom and flexibility to fit your organization's infrastructure and strategy—securely designed in a way that easily fits your environment. Plus, Mac-Lab, CardioLab, and ComboLab come standard with a secure baseline from Microsoft® to ensure better protection.

### Flexible

Easily integrates into your existing clinical workflows and IT environment with the configuration options you need.

### Seamless

Delivers an enhanced clinician experience by way of transparency, integration, and communication across care pathways and data.

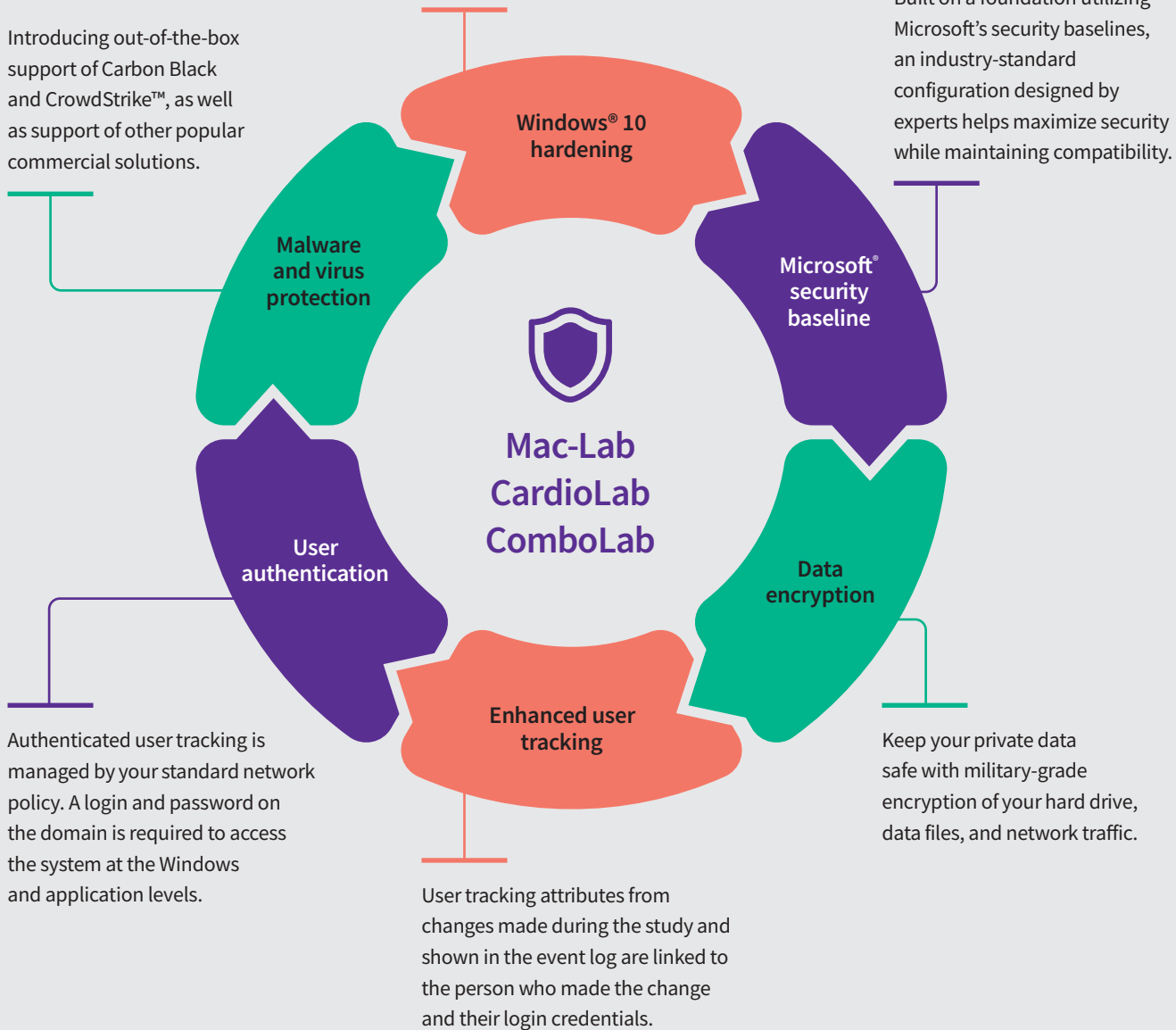
### Secure

Keeps your network protected and data private, no matter how many users, points of data entry, or care pathways.

A secure platform that's easily integrated into your ecosystem and provides enhanced code protection, a robust network firewall, and regular security releases.

Introducing out-of-the-box support of Carbon Black and CrowdStrike™, as well as support of other popular commercial solutions.

Built on a foundation utilizing Microsoft's security baselines, an industry-standard configuration designed by experts helps maximize security while maintaining compatibility.



## → Improving cardiology and enhancing life

Access GE HealthCare's security portal for more information or contact your GE HealthCare sales representative if you have any questions.

©2024 GE HealthCare. Mac-Lab™ and CardioLab™ are trademarks of GE HealthCare. GE is a trademark of General Electric Company used under trademark license. Microsoft and Windows are registered trademarks of Microsoft Corporation in the United States and/or other countries. CrowdStrike is a trademark of CrowdStrike, Inc., or its affiliates. Carbon Black is a trademark of VMware that reserves all rights to its trademarks, service marks and logos, which together with the trademarks, service marks and logos of subsidiaries of VMware will be collectively referred to as "VMware Marks".

October 2025  
JB28689XX



GE HealthCare