

Sustainable monitoring solutions for a resilient tomorrow



Carevance™ patient monitors

Creating a more sustainable future requires us to care for the planet and its inhabitants

It is essential that we continue to drive progress toward early, precise, and accessible diagnosis and treatment of more patients. For the planet, it is critical that we do so with a reduced impact on precious and rare resources that are imperative to life. We believe that the advancement of precision medicine, greater digitization of healthcare, and increased access to quality care are fundamental to accomplishing this goal.

We support carbon policies that reduce greenhouse gas emissions and promote sustainable development. GE HealthCare has a goal to achieve net zero by 2050. An interim goal is to reduce our operational emissions (Scope 1 and 2) by 42% and our Scope 3 emissions from purchased goods and services, upstream transportation and distribution, business travel, and use of sold products by 25% by 2030 compared to a 2022 baseline. In 2024, we received validation on our updated goals from the Science Based Targets initiative (SBTi), a group of visionary corporate leaders taking ambitious climate action. As a result of these efforts, we want to enable a more sustainable health system by addressing not only the environmental impacts of our products but also the challenges healthcare professionals and their patients face with resilient, digital solutions.



We have a goal to achieve net zero emissions by 2050.

We've set interim goals to reduce Scope 1 and 2 emissions by 42% and Scope 3 emissions by 25%¹ by 2030².

¹ Includes purchased goods and services, upstream transportation and distribution, business travel, and use of sold products. Source: <https://www.gehealthcare.com/-/jssmedia/gehc/us/files/about-us/sustainability/reports/ge-healthcare-sustainability-report-2023.pdf?rev=-1>

² From a 2022 baseline year.

Leading a new era in sustainability for a more resilient tomorrow

We're creating a world where healthcare has no limits, helping to improve access to care and enable better patient outcomes.



Environmental

Using fewer resources for a healthier planet.

Digital

Transforming healthcare through innovation.

Resilience

Building flexibility and dependability across healthcare systems.

Carevance patient monitors help create a more sustainable tomorrow

Our Carevance patient monitors and their services help ensure clinicians and the patients they serve have the technology necessary to create a more sustainable and resilient tomorrow.

Focusing on energy efficiency

- Carevance Clinical Dock in standby mode uses ~0 kwh
- E-manuals are installed in device, reducing the need for paper manuals

Improving circular economy

- 100% of plastic used in the Carevance monitors is recyclable
- All packaging is 100% biodegradable and 100% recyclable - No foil is used and the styropore is EPC grade

Environmentally conscious features to enhance patient care

- Adequacy of Anesthesia concept helps prevent excessive use of anesthetic agents
- Cardiac Output Insights application does not use proprietary catheters for Cardiac Output monitoring, thereby reducing plastic waste



Contributing to a healthier planet

More than half of the healthcare sector's climate footprint, approximately 53%, is attributable to energy use.¹ As a result, we have strengthened our commitment to environmentally conscious design and we are implementing more sustainable practices across our product manufacturing, sourcing, distribution, installation, and service operations. This includes improving energy efficiency, optimizing the use of limited or rare materials, providing digitally enabled service throughout the product lifespan, and offering refurbishment and recycling options at the end of product life.

GE HealthCare environmental management system is ISO 14001 certified

Our production and service operations align to ISO 14001 standards

We're committed to environmental product design

Carevance patient monitors fulfill IEC 60601-1-9:2007+A1:2013+A2:2020 requirements²

¹ Health care climate footprint report | Health Care Without Harm (noharm-uscanada.org), based on 2019 report.

² IEC 60601-1-9 Compliance Checklist DOC3170163.

Materials

GE HealthCare reviews the environmental aspects of the material supply used within our products to increase recyclability and decrease the use of hazardous substances, when possible.

Recyclability

We're committed to high recyclability of our products and reuse when possible.

The Carevance patient monitor materials are recycled according to the product WEEE Passport¹

Reduce the use of hazardous substances

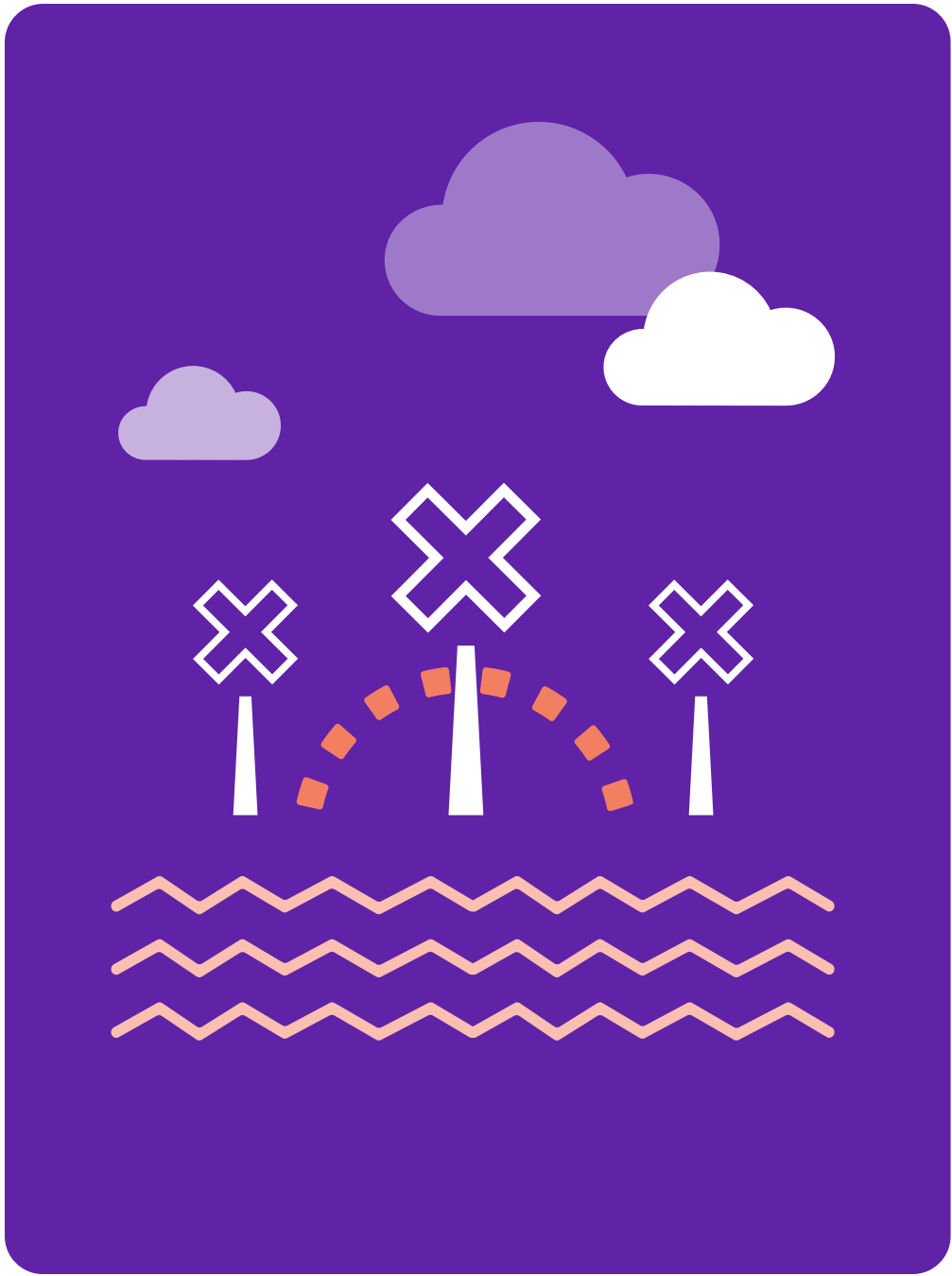
EU RoHS directive 2011/65/EU, amended by (EU) 2015/863, (EU) 2017/2102²

REACH (EC) 1907-2006³

¹ DOC3170132 WEEE Selective Treatment.

² DOC3166918 RoHS compliance report.

³ DOC2706411 EU REACH Substance Communication document for Monitoring Solutions.



Packaging and distribution

GE HealthCare patient monitoring equipment has a robust and multi-sourced supply chain for systems and spare parts across all product portfolios. The supply chain is evaluated for both shipping materials and shipping distances, leveraging local suppliers where appropriate, to help minimize CO₂ emissions.

Manufacturing

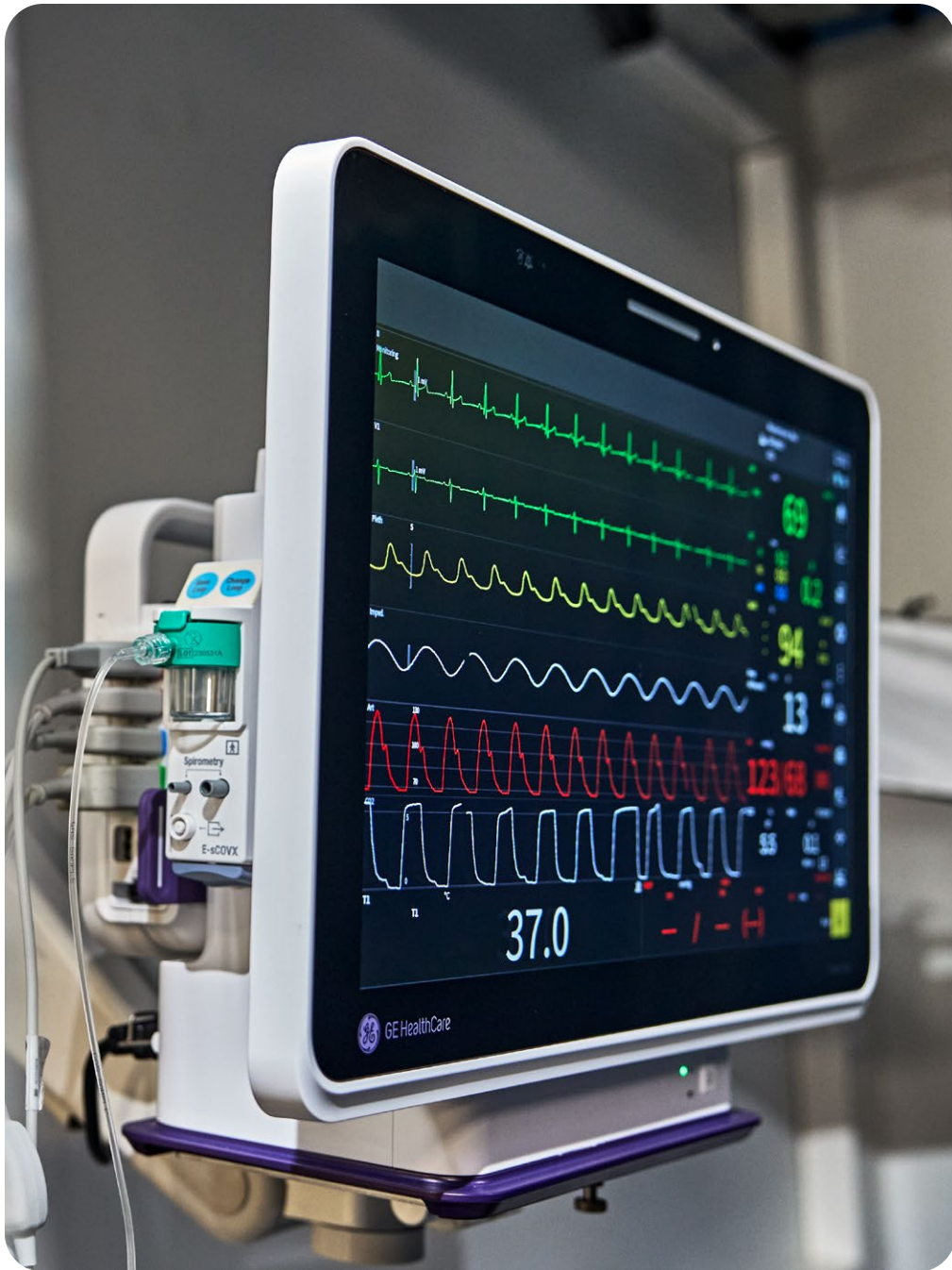
Through our environmental reviews, we also focus on implementing more renewable energy and reducing waste, when possible.

Reducing waste

Through our environmental reviews, we are committed on implementing renewable energy and reducing waste in our manufacturing.

Packaging

- 100% biodegradable
- 100% recyclable
- Reusable



Product utilization

Our patient monitoring products are designed to help enable energy efficiency through dedicated features and advanced applications to reduce the environmental impact.

Power consumption¹

Configuration	Energy/Day kWh	Energy/Year kWh
Carevance H1 Hub & D7 Mini Dock	0,24	87,60
Carevance H1 Hub & D12 Dock	0,53	191,84
Carevance H1 Hub & D15 Dock	0,54	196,31
Carevance H1 Hub & D19 Dock	0,57	208,40
Carevance Clinical Dock in standby mode uses ~0 kWh		



Carevance D15 Dock with Carevance H1 Hub



Carevance H1 Hub with Carevance D7 Mini Dock

¹ Source: DOC3205868 Carevance power consumption measurement and energy usage.



Guidance for end of lifecycle

Equipment instructions are provided to minimize the environmental impact for disposal or recycling.

Upgrades

Hardware and software options are provided as a solution to extend the product lifespan.

Hardware expected lifetime is 10 years with software upgrades available until product End of life¹. Field Replaceable Units (FRU) and Depot Replaceable Units (DRU) are available during the product lifetime.

Waste reduction

The Carevance patient monitor is placed on the market in accordance with Waste Electrical and Electronic Equipment (WEEE) directive².

¹ DOC3179740 Service Life Analysis.

² DOC3170132 WEEE Selective Treatment .

Optimizing monitoring uptime and security

Cleanability

Cleaning and disinfection instructions have been validated for efficacy¹. 23 cleaning and disinfection chemicals allowed².

Digital - Cybersecurity

GE HealthCare's Design Engineering Privacy and Security (DEPS) process follows GDPR, HIPAA, NIST 800-53, NIST 800-30, ISO 27001, and NIST CSF requirements.

Manufacturer Disclosure Statement for Medical Device Security (MDS2) with detailed information of the security and privacy capabilities can be found at DOC2923881 MDS2.

Service Training

Computer Based Training (CBT) is offered for biomedics and clinical engineers. The training provides information about how to install, maintain and repair the Carevance monitors.

¹ DOC3138482 Cleaning and Disinfection efficacy test report.

² Carevance™ H1, Carevance™ D12, Carevance™ D15, Carevance™ D19 and Carevance™ D7 User Manual Software Version 1 6688000-8EN.



Creating a healthy world to help enable better patient outcomes.

GEHealthCare.com/about/sustainability

Not all products or features are available in all geographies. Check with your local GE HealthCare representative for availability in your country. Commercial availability of GE HealthCare medical systems is subject to meeting local requirements in a given country or region. Not all features are included in the standard system configuration. Contact a GE HealthCare representative for more information. Intended for healthcare professionals only.

© 2025 GE HealthCare.

Carevance is a trademark of GE HealthCare. GE is a trademark of General Electric Company used under trademark license. JB00825XY_1 11/2025



GE HealthCare