

Sustainable monitoring solutions for a resilient tomorrow



CARESCAPE™ ONE patient monitor

Creating a more sustainable future requires us to care for the planet and its inhabitants

It is essential that we continue to drive progress toward early, precise, and accessible diagnosis and treatment of more patients. For the planet, it is critical that we do so with a reduced impact on precious and rare resources that are imperative to life. We believe that the advancement of precision medicine, greater digitization of healthcare, and increased access to quality care are fundamental to accomplishing this goal.

We support carbon policies that reduce greenhouse gas emissions and promote sustainable development. GE HealthCare has a goal to achieve net zero by 2050. An interim goal is to reduce our operational emissions (Scope 1 and 2) by 42% and our Scope 3 emissions from purchased goods and services, upstream transportation and distribution, business travel, and use of sold products by 25% by 2030 compared to a 2022 baseline. In 2024, we received validation on our updated goals from the Science Based Targets initiative (SBTi), a group of visionary corporate leaders taking ambitious climate action. As a result of these efforts, we want to enable a more sustainable health system by addressing not only the environmental impacts of our products but also the challenges healthcare professionals and their patients face with resilient, digital solutions.



We have a goal to achieve net zero emissions by 2050.

We've set interim goals to reduce Scope 1 and 2 emissions by 42% and Scope 3 emissions by 25%¹ by 2030².

¹ Includes purchased goods and services, upstream transportation and distribution, business travel, and use of sold products

² From a 2022 baseline year.

Leading a new era in sustainability for a more resilient tomorrow

We're creating a world where healthcare has no limits, helping to improve access to care and enable better patient outcomes.



Environmental

Using fewer resources for a healthier planet.

Digital

Transforming healthcare through innovation.

Resilience

Building flexibility and dependability across healthcare systems.

CARESCAPE ONE monitor helps create a more sustainable tomorrow

Our CARESCAPE ONE monitoring solution and its services help ensure clinicians and the patients they serve have the technology necessary to create a more sustainable and resilient tomorrow.

Reducing environmental impact

- CARESCAPE ONE monitor with micromodules uses 57% less energy than CARESCAPE B450 monitor with CARESCAPE Patient Data Module (PDM) in a typical patient transport scenario with similar setups¹ and settings².
- CARESCAPE ONE monitor uses 10% less energy than CARESCAPE B450 monitor with PDM module in Standby mode.³

Improving care

- CARESCAPE ONE monitor with micromodules weigh 50% of the CARESCAPE B450 monitor with PDM module in a typical patient transport scenario with similar setups¹ (3.1 kg versus 6.3 kg).⁴
- One unified monitoring solution across your enterprise
- A FlexAcuity™ solution adapts to changing conditions
- Durable technology for staying on the move

¹ Monitor with 5 lead ECG, SpO₂, Invasive BP, Temperature and NIBP measurements.

² Display at 100% brightness and NIBP measurement at 15 min intervals.

³ Power consumption measurement results in document DOC2742033.

⁴ According to published data in the product specification sheets.



Contributing to a healthier planet

More than half of the healthcare sector's climate footprint, approximately 53%, is attributable to energy use.¹ As a result, we have strengthened our commitment to environmentally conscious design and we are implementing more sustainable practices across our product manufacturing, sourcing, distribution, installation, and service operations. This includes improving energy efficiency, optimizing the use of limited or rare materials, providing digitally enabled service throughout the product lifespan, and offering refurbishment and recycling options at the end of product life.

GE HealthCare environmental management system is ISO 14001 certified

Yes, CARESCAPE ONE production and service fulfill ISO 14001 requirements.

We're committed to environmental product design

Yes, CARESCAPE ONE products fulfill IEC60601-1-9:2013 requirements²

¹ Health care climate footprint report | Health Care Without Harm (noharm-uscanada.org), based on 2019 report.

² DOC1841583 for CARESCAPE ONE

Materials

GE HealthCare reviews the environmental aspects of the material supply used within our products to increase recyclability and decrease the use of hazardous substances, when possible.

Recyclability

We're committed to high recyclability of our products and reuse when possible.

CARESCAPE ONE materials are recycled according to the product WEEE Passport¹

Reduce the use of hazardous substances

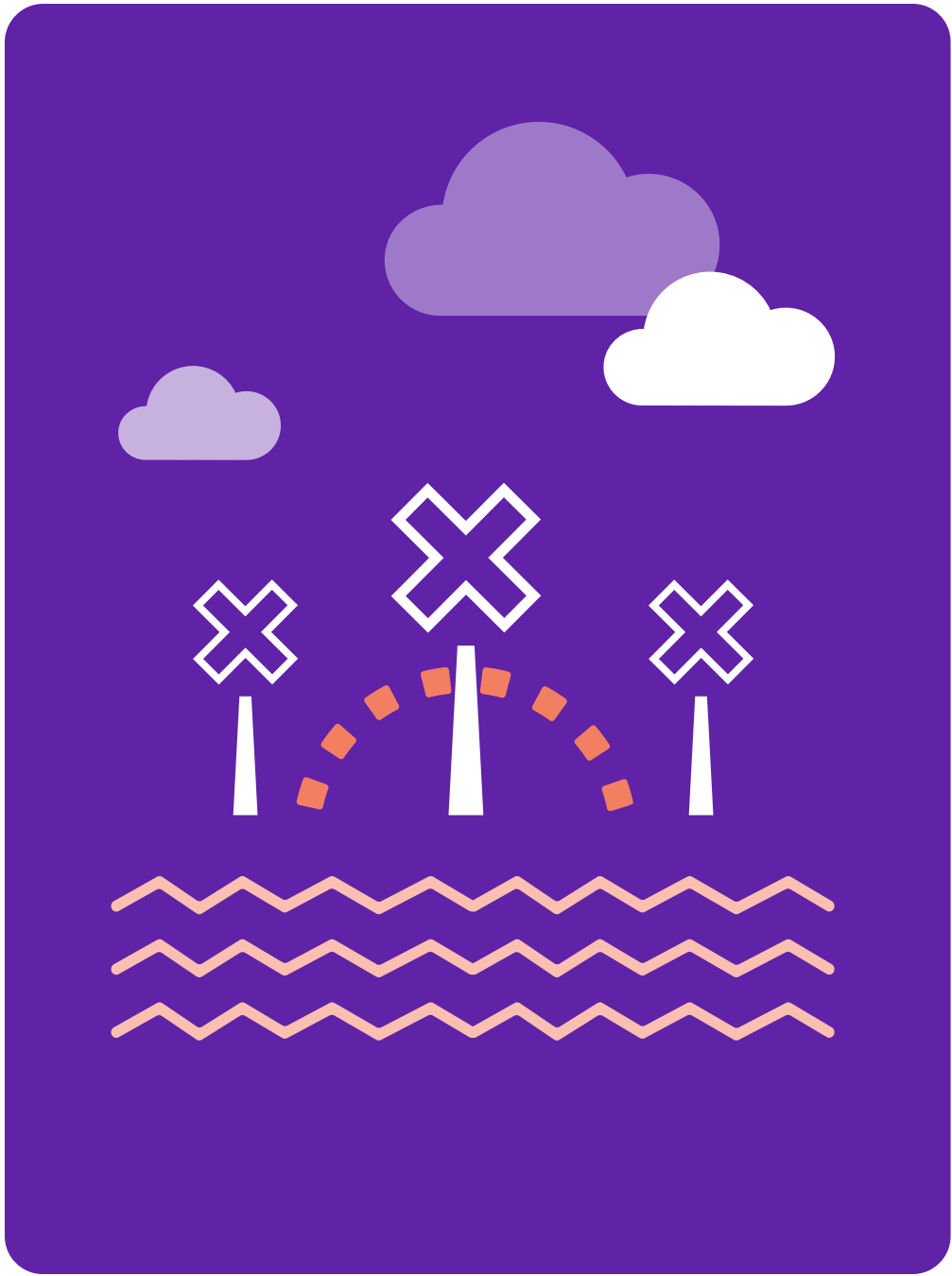
EU RoHS directive 2011/65/EU²

REACH (EC) 1907-2006³

¹ DOC2010049 WEEE Passport for CARESCAPE ONE.

² DOC2015481 for CARESCAPE ONE.

³ DOC2706411 EU REACH Substance Communication document for Monitoring Solutions.



Packaging and distribution

GE HealthCare patient monitoring equipment has a robust and multi-sourced supply chain for systems and spare parts across all product portfolios. The supply chain is evaluated for both shipping materials and shipping distances, leveraging local suppliers where appropriate, to help minimize CO₂ emissions.

Packaging materials

CARESCAPE ONE monitor's packaging material consists of following materials (% per weight)

- Cardboard – 71%
- Paper – 21%
- Plastics – 7% (recyclable PE and EPE)
- Other – 1% (Silica gel desiccant)¹

Manufacturing

Through our environmental reviews, we also focus on implementing more renewable energy and reducing waste, when possible.

Renewable energy

All products (including CARESCAPE ONE) coming from the GE HealthCare Helsinki Site are manufactured by using 100% renewable electricity

Reducing waste

Through our environmental reviews, we are committed on implementing renewable energy and reducing waste in our manufacturing

¹ DOC2770171 Monitoring Solutions HKI Product Packaging Volume and Weight Data.



Product utilization

Our patient monitoring products are designed to help enable energy efficiency through dedicated features and advanced applications to reduce the environmental impact.

Power consumption¹

Display 100 % Red alarm

10.6 W at 100% display brightness

Display 100 %

10.38 W at 100% display brightness

Display 70 %

10.05 W at 70 % display brightness

Display 30 %

9.64 W at 30 % display brightness

Stand-by-mode

6.08 W at Stand-by-mode

¹ Measurement results in document DOC2742033.

End of product life

We are increasingly putting our retired products' materials back into the supply chain to maximize efficient use and minimize unnecessary waste. This circularity model enables our monitoring products to extend their clinical impact through longer lifespans while reducing the environmental footprint. CARESCAPE monitors support backward/forward compatibility that allows customers to adopt new technology at their own pace while continuing to leverage existing investments to maximize the useful life of patient monitoring solutions. Additionally, we offer our customers support for upgrades and services throughout a product's lifespan, when available, to maintain optimal performance and help drive better patient outcomes.

Our refurbishment programs involve an extensive inspection and testing process, designed to bring equipment back to its original certified manufacturing specifications. If the system is not suitable for refurbishment, eligible parts are harvested for reuse after quality and performance testing, while the remaining parts are returned to dedicated recycling facilities.

Guidance for end of lifecycle

Equipment instructions are provided to minimize the environmental impact for disposal or recycling.

Upgrades

Hardware and software options are provided as a solution to extend the product lifespan.

Hardware expected lifetime is 7 years with software upgrades available until product End of life. Field Replaceable Units (FRU) and Depot Replaceable Units (DRU) are available during the product lifetime.

Waste reduction

CARESCAPE ONE monitor is in accordance with Waste Electrical and Electronic Equipment (WEEE) directive¹.

¹ DOC2010049 WEEE Passport for CARESCAPE ONE monitor.

Optimizing monitoring uptime and security

Cleanability Cleaning and disinfection instructions have been validated for efficacy¹. 14 cleaning and disinfection chemicals allowed².

Digital - Cybersecurity GE HealthCare's Design Engineering Privacy and Security (DEPS) process follows GDPR, HIPAA, NIST 800-53, NIST 800-30, ISO 27001, and NIST CSF requirements.

Manufacturer Disclosure Statement for Medical Device Security (MDS2) with detailed information of the security and privacy capabilities can be found at DOC2458200 CARESCAPE ONE V3.2 MDS2.

Software Updates Software upgrades are delivered with remote connections.

Service Hospital staff can access the monitors remotely over the IX Network with CARESCAPE Service Interface (CSI) or the CARESCAPE Multi Monitor Manager (MMM).

These service tools allow the service experts to perform fleet management service activities in a secure and managed way even when the patient monitor is in clinical use, for example, troubleshooting, configuration & software management.

Service Training Computer Based Training (CBT) and Instructor Led Training (ILT) is offered for biomed and clinical engineers. The training provides information about how to install, maintain and repair the CARESCAPE ONE monitoring system.

¹ DOC2663271 CARESCAPE ONE Cleaning and Disinfection Validation Report.

² 5697482-01 CARESCAPE and CARESCAPE Canvas Monitors Cleaning and Disinfection Supplement.



Creating a healthy world to help enable better patient outcomes.

GEHealthCare.com/about/sustainability

Not all products or features are available in all geographies. Check with your local GE HealthCare representative for availability in your country. Commercial availability of GE HealthCare medical systems is subject to meeting local requirements in a given country or region. Not all features are included in the standard system configuration. Contact a GE HealthCare representative for more information. Intended for healthcare professionals only.

© 2025 GE HealthCare. CARESCAPE, FlexAcuity and InSite are trademarks of GE HealthCare.
GE is a trademark of General Electric Company used under trademark license. JB31504XX_1 1/2025



GE HealthCare