

Sustainable monitoring solutions for a resilient tomorrow



B1x5P & B1x5M patient monitors

Creating a more sustainable future requires us to care for the planet and its inhabitants

It is essential that we continue to drive progress toward early, precise, and accessible diagnosis and treatment of more patients. For the planet, it is critical that we do so with a reduced impact on precious and rare resources that are imperative to life. We believe that the advancement of precision medicine, greater digitization of healthcare, and increased access to quality care are fundamental to accomplishing this goal.

We support carbon policies that reduce greenhouse gas emissions and promote sustainable development. GE HealthCare has a goal to achieve net zero by 2050. An interim goal is to reduce our operational emissions (Scope 1 and 2) by 42% and our Scope 3 emissions from purchased goods and services, upstream transportation and distribution, business travel, and use of sold products by 25% by 2030 compared to a 2022 baseline. In 2024, we received validation on our updated goals from the Science Based Targets initiative (SBTi), a group of visionary corporate leaders taking ambitious climate action. As a result of these efforts, we want to enable a more sustainable health system by addressing not only the environmental impacts of our products but also the challenges healthcare professionals and their patients face with resilient, digital solutions.



We have a goal to achieve net zero emissions by 2050.

We've set interim goals to reduce Scope 1 and 2 emissions by 42% and Scope 3 emissions by 25%¹ by 2030².

¹ Includes purchased goods and services, upstream transportation and distribution, business travel, and use of sold products. Source: <https://www.gehealthcare.com/-/jssmedia/gehc/us/files/about-us/sustainability/reports/ge-healthcare-sustainability-report-2023.pdf?rev=-1>

² From a 2022 baseline year.

Leading a new era in sustainability for a more resilient tomorrow

We're creating a world where healthcare has no limits, helping to improve access to care and enable better patient outcomes.



Environmental

Using fewer resources
for a healthier planet.

Digital

Transforming healthcare
through innovation.

Resilience

Building flexibility and
dependability across
healthcare systems.

B1x5M/P patient monitors help create a more sustainable tomorrow

Our B1x5M/P patient monitors and their services help ensure clinicians and the patients they serve have the technology necessary to create a more sustainable and resilient tomorrow.

Reducing environmental impact

- A redesign of the packaging for the B105 & B125 models mean that the volume is 24% smaller than the previous versions, saving material & allowing for efficiencies in transportation.

The B1x5M/P range of modular patient monitors delivers the premium clinical performance you expect from GE HealthCare, all in an intuitive design. It allows you to scale across care areas and patient types by easily transitioning from essential vital signs to advanced monitoring with additional parameter modules.*

* Applies to B1x5M.



Contributing to a healthier planet

More than half of the healthcare sector's climate footprint, approximately 53%, is attributable to energy use.¹ As a result, we have strengthened our commitment to environmentally conscious design and we are implementing more sustainable practices across our product manufacturing, sourcing, distribution, installation, and service operations. This includes improving energy efficiency, optimizing the use of limited or rare materials, providing digitally enabled service throughout the product lifespan, and offering refurbishment and recycling options at the end of product life.

GE HealthCare environmental management system is ISO 14001 certified

We're committed to environmental product design B1x5M/P patient monitors fulfill IEC 60601-1-9:2007+A1:2013+A2:2020 requirements²

¹ Health care climate footprint report | Health Care Without Harm (noharm-uscanada.org), based on 2019 report.

² DOC2764567 for B1x5M/P v4.

Materials

GE HealthCare reviews the environmental aspects of the material supply used within our products to increase recyclability and decrease the use of hazardous substances, when possible.

Recyclability

We're committed to high recyclability of our products and reuse when possible.

The B1x5M/P patient monitor materials are recycled according to the product WEEE Passport¹

Reduce the use of hazardous substances

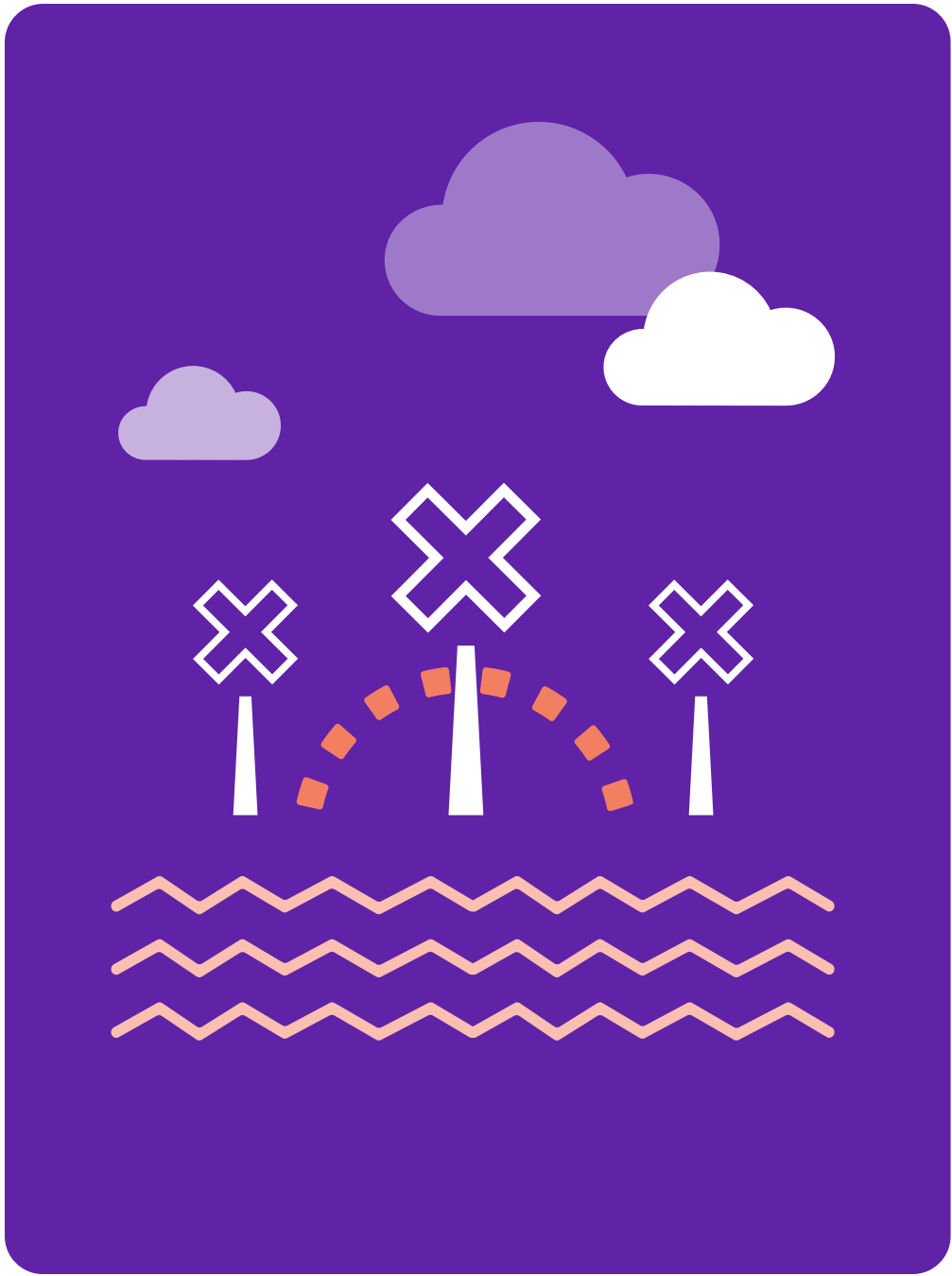
EU RoHS directive 2011/65/EU, amended by (EU) 2015/863, (EU) 2017/2102²

REACH (EC) 1907-2006³

¹ DOC2764570 WEE passport for B1x5M/P v4 patient monitors.

² DOC2761394 Bx5M/P v4 RoHS Compliance Report.

³ DOC2706411 EU REACH Substance Communication document for Monitoring Solutions.



Packaging and distribution

GE HealthCare patient monitoring equipment has a robust and multi-sourced supply chain for systems and spare parts across all product portfolios. The supply chain is evaluated for both shipping materials and shipping distances, leveraging local suppliers where appropriate, to help minimize CO₂ emissions.

Manufacturing

Through our environmental reviews, we also focus on implementing more renewable energy and reducing waste, when possible.

Reducing waste

Through our environmental reviews, we are committed on implementing renewable energy and reducing waste in our manufacturing



Product utilization

Our patient monitoring products are designed to help enable energy efficiency through dedicated features and advanced applications to reduce the environmental impact.

Power consumption

Family	Energy/Day (kWh)	Energy/Year (kWh)
B105 M/P	0.307	112.06
B125 M/P	0.323	117.90
B155 M	0.330	120.45



Guidance for end of lifecycle

Equipment instructions are provided to minimize the environmental impact for disposal or recycling.

Upgrades

Hardware and software options are provided as a solution to extend the product lifespan.

Hardware expected lifetime is 10 years with software upgrades available until product End of life¹. Field Replaceable Units (FRU) and Depot Replaceable Units (DRU) are available during the product lifetime.

Waste reduction

The B1x5M/P patient monitor is place on the market in accordance with Waste Electrical and Electronic Equipment (WEEE) directive².

¹ DOC2785831 Analysis and Evaluation Report of Expected Service Life for B1x5MB1x5P v4.

² DOC2764570 WEE passport for B1x5M/P v4 patient monitors.

Optimizing monitoring uptime and security

Cleanability	Cleaning and disinfection instructions have been validated for efficacy ¹ . 15 cleaning and disinfection chemicals allowed ² .
Digital - Cybersecurity	<p>GE HealthCare's Design Engineering Privacy and Security (DEPS) process follows GDPR, HIPAA, NIST 800-53, NIST 800-30, ISO 27001, and NIST CSF requirements.</p> <hr/> <p>Manufacturer Disclosure Statement for Medical Device Security (MDS2) with detailed information of the security and privacy capabilities can be found at DOC2544194 MDS2 for B1x5M/P v4.</p>
Software Updates	Software updates are delivered with remote connections.
Service	<p>B1x5M/P service tool can be accessed remotely: GE HealthCare remote service engineers can access the monitors remotely from outside the hospital using the GE HealthCare's remote service platform (InSite™ RSvP).</p> <hr/> <p>The service tool allows the service experts to perform troubleshooting in a secure.</p>
Service Training	Computer Based Training (CBT) is offered for biomed and clinical engineers. The training provides information about how to install, maintain and repair the B1x5M/P VSP4.0 monitors.

¹ DOC2602808 B1x5M/P monitors Cleaning and Disinfection Validation Report.

² DOC2727938 B1x5M/P monitors Cleaning and Disinfection Supplement.



Creating a healthy world to help enable better patient outcomes.

GEHealthCare.com/about/sustainability

Not all products or features are available in all geographies. Check with your local GE HealthCare representative for availability in your country. Commercial availability of GE HealthCare medical systems is subject to meeting local requirements in a given country or region. Not all features are included in the standard system configuration. Contact a GE HealthCare representative for more information. Intended for healthcare professionals only.

© 2025 GE HealthCare.
GE is a trademark of General Electric Company used under trademark license. JB32901XX_1 11/2025



GE HealthCare