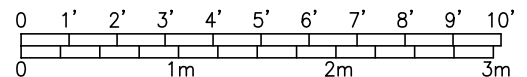
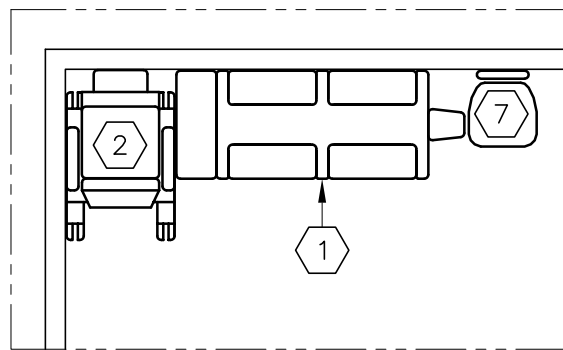
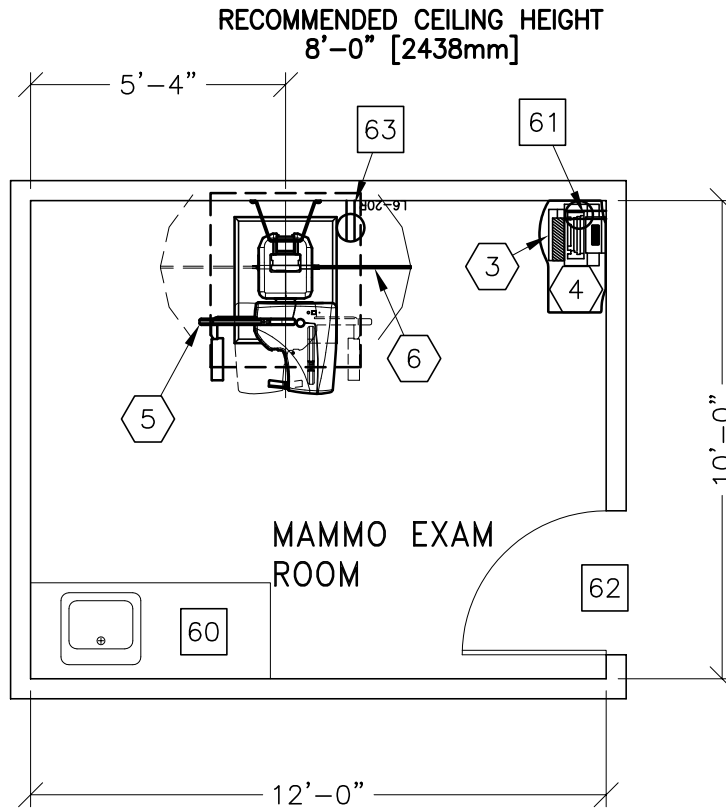


# PERFORMA MAMMOGRAPHY SYSTEM



MINIMUM: 8'-0" x 8'-0" [2.44m x 2.44m] 7'-6" [2.29m]



9-28

①	1 DBI IMAGING TABLE	315 lbs	
②	1 MAMMOGRAPHY AND BIOPSY CHAIR	160 lbs	
③	1 ALPHA ID FILM MARKING SYSTEM	24 lbs	170 btu
④	1 ALPHA STORE	160 lbs	
⑤	1 PERFORMA MAMMOGRAPHY SYSTEM	584 lbs	546 btu
⑥	1 MOUNTED RADIATION SHIELD	143 lbs	
⑦	1 HYDRAULIC CHAIR		

\*\*\*\*\*  
**CUSTOMER/CONTRACTOR SUPPLIED AND INSTALLED ITEMS**  
 \*\*\*\*\*

- ⑥0 COUNTER TOP WITH SINK AND BASE CABINETS
- ⑥1 DUPLEX HOSPITAL GRADE RECEPTACLE AND COVERPLATE
- ⑥2 MINIMUM DOOR OPENING FOR EQUIPMENT DELIVERY IS  
 36 IN. W x 82 IN. H [914mm x 2083mm], CONTINGENT ON  
 A 96 IN. [2438mm] CORRIDOR WIDTH
- ⑥3 DEDICATED 220-240V, 20A, NEMA L6-20R RECEPTACLE AND  
 PLUG

60-75° F [10-24° C]  
 5° F [3° C] per hour  
 15-85 percent non condensing  
 5 percent per hour  
 N/A