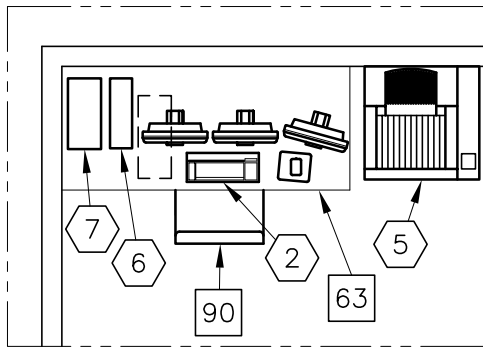
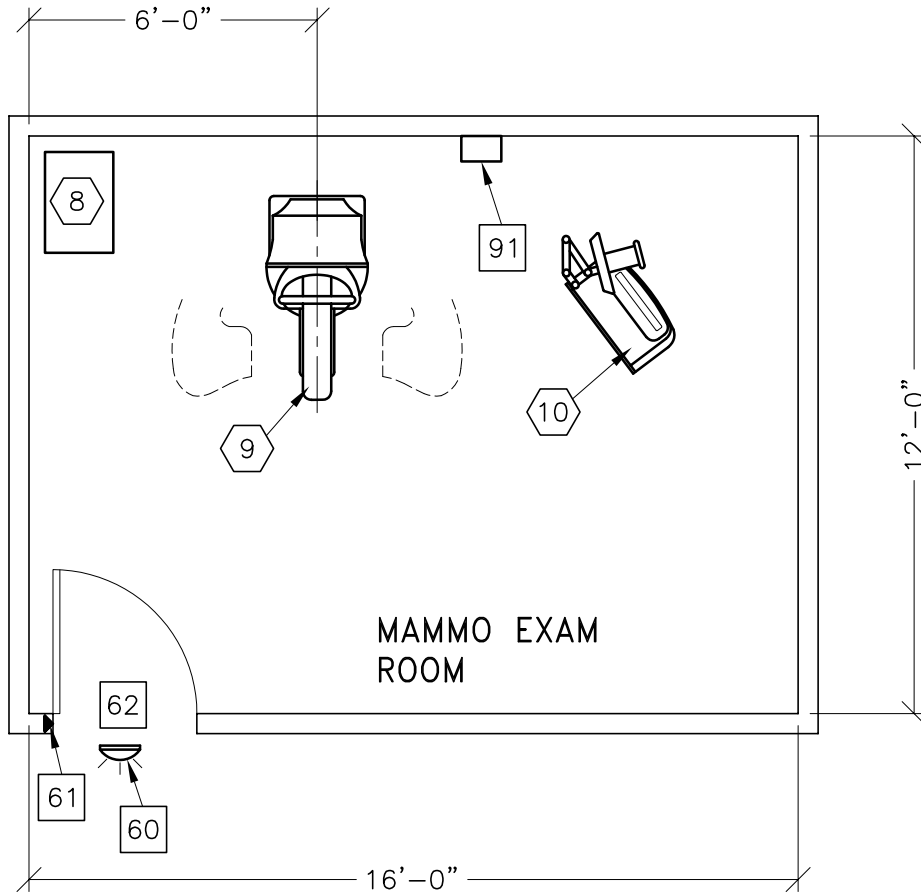
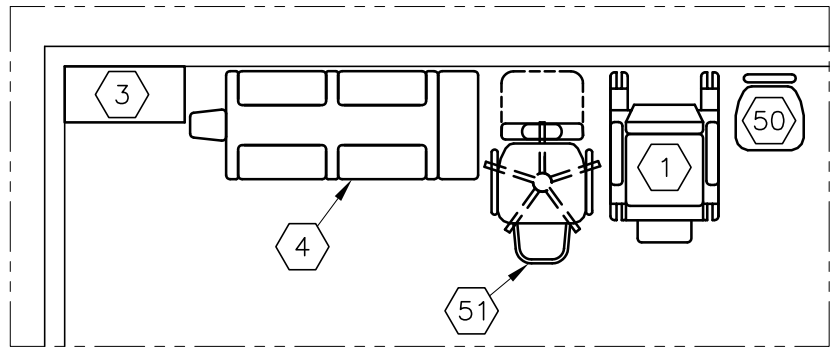




SENOGRAPHE ESSENTIAL

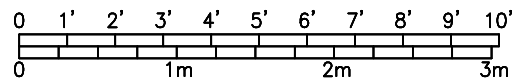


(VERIFY LOCATION)



(OPTIONS FOR INSIDE MAMMO EXAM ROOM)

ROOM DIMENSIONS	LENGTH & WIDTH	CEILING HEIGHT
MINIMUM:	10'-0" x 12'-0" [3.5m x 3.7m]	8'-0" [2.4m]



SEE APPENDIX "A" FOR POWER SPECIFICATIONS

ROOM PLAN LOCATED ON PAGE 9-32

ITEM	QUANTITY	ITEM DESCRIPTION	WEIGHT	HEAT OUTPUT
①	1	MAMMOGRAPHY AND BIOPSY CHAIR	160 lbs	
②	1	REVIEW WORKSTATION	134 lbs	2590 btu
③	1	MAMMO ACCESSORIES STORAGE CABINET	48 lbs	
④	1	DBI IMAGING TABLE MODEL 7407	315 lbs	
⑤	1	AGFA DRYSTAR AXYS IMAGER	198 lbs	238 btu 1805 btu
⑥	1	UPS SYSTEM	68 lbs	955 btu
⑦	1	CAD OPTION	33 lbs	955 btu
⑧	1	SENOGRAPHE ESSENTIAL GENERATOR	352 lbs	3061 btu
⑨	1	SENOGRAPHE ESSENTIAL GANTRY <BTU'S INCLUDE CONTROL CONSOLE>	789 lbs	341 btu
⑩	1	SENOGRAPHE ESSENTIAL CONTROL STATION	462 lbs	
⑤①	1	HYDRAULIC CHAIR		
⑤②	1	DELUXE RECLINING CHAIR <CAT NO E6315HB>		
***** <b>CUSTOMER/CONTRACTOR SUPPLIED AND INSTALLED ITEMS</b> *****				
⑥①		X-RAY ON WARNING LIGHT - AVAILABLE FROM GE SUPPLY CALL: 800-200-9760 GE CAT. NO. WXIABWW-0F-XIU-24<LED> <NEEDED ONLY IF REQUIRED BY STATE/LOCAL CODES>		
⑥②		DOOR LIMIT SWITCH <NEEDED ONLY IF REQUIRED BY STATE/LOCAL CODES>		
⑥③		MINIMUM DOOR OPENING FOR EQUIPMENT DELIVERY IS 28 IN. W x 79 IN. H [711mm x 2006mm], CONTINGENT ON A 60 IN. [1524mm] CORRIDOR WIDTH		
⑥④		COUNTERTOP FOR EQUIPMENT		
⑥⑤		OPERATORS CHAIR		
⑥⑥		MAIN DISCONNECT CONTROL, WALL MOUNTED GEMS CAT. NO. E4502B, 65 lbs. SEE DETAIL R4502B.		

ENVIRONMENT

Ambient Operation Temperature: 59-95° F (15-35° C)  
 Allowable Temperature Change: 3.6° F (1.5° C) per hour  
 Humidity: 40-75 percent non condensing  
 Allowable Humidity Change: 10 percent per hour  
 Max - Altitude: 9840 ft. (2999 M) above sea level