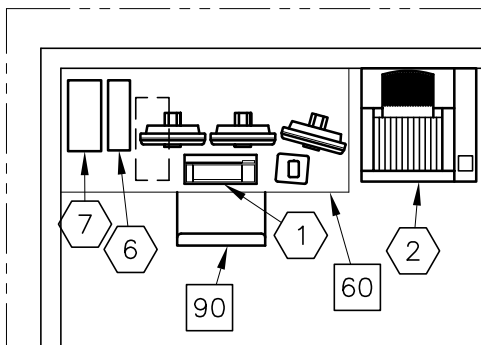
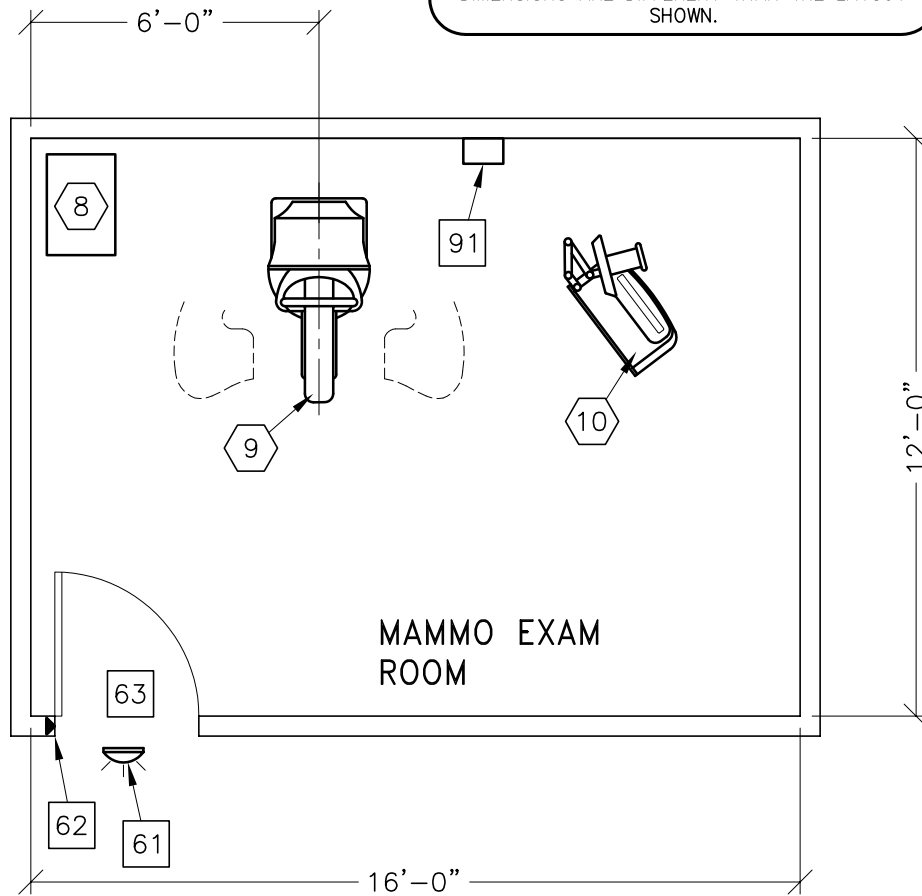


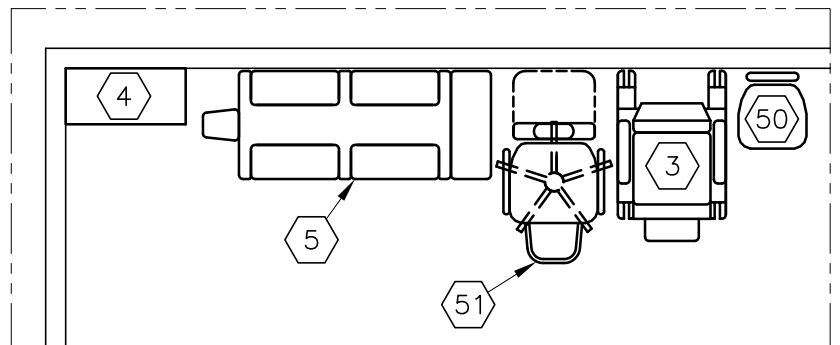


SENOGRAPHE DS

NOTE: THIS IS A SUGGESTED LAYOUT BASED OFF OF GE HEALTHCARE PRE-INSTALL MANUAL. PLEASE CONTACT LOCAL PROJECT MANAGER OF INSTALLATION IF YOUR ROOM LAYOUT OR DIMENSIONS ARE DIFFERENT THAN THE LAYOUT SHOWN.

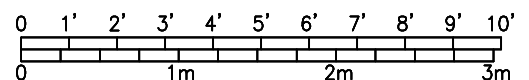


(VERIFY LOCATION)



(OPTIONS FOR INSIDE MAMMO EXAM ROOM)

ROOM DIMENSIONS	LENGTH & WIDTH	CEILING HEIGHT
MINIMUM:	10'-0" x 12'-0" [3.5m x 3.7m]	8'-0" [2.4m]



SEE APPENDIX "A" FOR POWER SPECIFICATIONS

ROOM PLAN LOCATED ON PAGE 9-26

ITEM	QUANTITY	ITEM DESCRIPTION	WEIGHT	HEAT OUTPUT
①	1	REVIEW WORKSTATION	134 lbs	2590 btu
②	1	AGFA DRYSTAR AXYS IMAGER	198 lbs	238 btu
③	1	MAMMOGRAPHY AND BIOPSY CHAIR	160 lbs	1805 btu
④	1	MAMMO ACCESSORIES STORAGE CABINET	48 lbs	
⑤	1	DBI IMAGING TABLE MODEL 7407	315 lbs	
⑥	1	UPS SYSTEM	68 lbs	955 btu
⑦	1	CAD OPTION	33 lbs	955 btu
⑧	1	SENOGRAPHE DS GENERATOR CABINET	352 lbs	
⑨	1	SENOGRAPHE DS GANTRY	992 lbs	3399 btu
⑩	1	SENOGRAPHE DS CONTROL STATION	319 lbs	
⑤①	1	HYDRAULIC CHAIR		
⑤②	1	DELUXE RECLINING CHAIR (CAT NO E6315HB)		
***** CUSTOMER/CONTRACTOR SUPPLIED AND INSTALLED ITEMS *****				
⑥①		COUNTER TOP FOR EQUIPMENT		
⑥②		X-RAY ON WARNING LIGHT - AVAILABLE FROM GE SUPPLY CALL: 800-200-9760 GE CAT. NO. WXIABWW-0F-XIU-24(LED) (NEEDED ONLY IF REQUIRED BY STATE/LOCAL CODES)		
⑥③		DOOR LIMIT SWITCH (NEEDED ONLY IF REQUIRED BY STATE/LOCAL CODES)		
⑥④		MINIMUM DOOR OPENING FOR EQUIPMENT DELIVERY IS 28 IN. W x 79 IN. H [711mm x 2006mm], CONTINGENT ON A 60 IN. [1524mm] CORRIDOR WIDTH		
⑨①		OPERATORS CHAIR		
⑨②		MAIN DISCONNECT CONTROL, WALL MOUNTED GEMS CAT. NO. E4502B, 65 lbs. SEE DETAIL R4502B.		

ENVIRONMENT

Ambient Operation Temperature: 59-95° F (15-35° C)
 Allowable Temperature Change: 3.6° F (1.5° C) per hour
 Humidity: 40-75 percent non condensing
 Allowable Humidity Change: 10 percent per hour
 Max - Altitude: 9840 ft. (2999M) above sea level