

Chapter 13 Image Pasting Barrier (option)

Section 1.0 Summary Checklist

- ☐ Align template to wall stand base
- ☐ Mark sets of image pasting barrier mounting holes (standard or extended wall stand) on floor
- ☐ Drill holes and mount receptor brackets
- ☐ Attach measurement labels to handles and base

Section 2.0 Procedure

- 1.) Align the U-side of the metal template ([Figure 13-1](#)) to the wall stand floor plate.

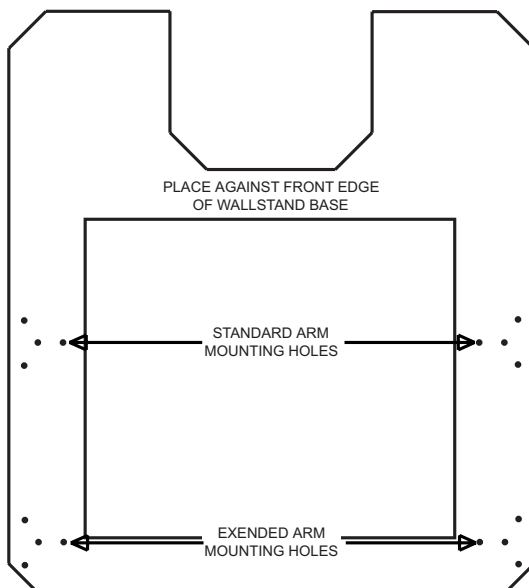


Figure 13-1 Image Pasting Barrier Drilling Template

- 2.) The template should touch the front and sides of the wall stand floor plate. Make sure the template is not cocked before you start drilling holes in the floor.
- 3.) The template has two sets of mounting holes:
 - one set of holes for a **regular** wall stand
 - one set of holes for an **extended** wall stand**Use the appropriate set of mounting holes for the wall stand you have.**
- 4.) With the template in place, use a 6 mm drill bit to drill the pilot hole for the center hole and the three 6 mm holes surrounding the pilot hole. Repeat for the other side.
- 5.) Remove the template. Use the pilot hole in the center to drill a 1" diameter hole, 2" deep. Repeat for the other side.

- 6.) Insert the 6 plastic anchors into the 6 mm holes.
- 7.) Center the adjuster plates (Figure 13-2) over the 6 mm mounting holes.
- 8.) On the receptor bracket, back out the 3 adjustment set screws until the end of each set screw is even with the bottom surface of the receptor bracket.
- 9.) Insert the metal pin on the receptor brackets (Figure 13-2) through the adjuster plates and into the 1" holes and align with the three 6 mm mounting holes.

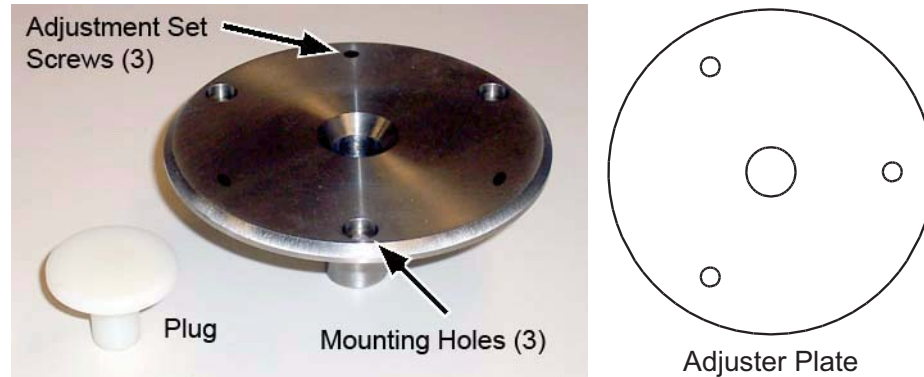


Figure 13-2 Receptor Bracket & Plug and Adjuster Plate

- 10.) Install the 3 screws through each bracket and into the mounting holes, but do not completely tighten.
- 11.) Wheel the barrier (Figure 13-3) over to the receptor brackets and confirm that the barrier locking pins align with the receptor brackets. If the alignment is acceptable, tighten the screws you have access to. Remove the barrier and finish tightening the rest of the screws. The receptor bracket plugs (Figure 13-2) should be placed into the receptor bracket to prevent debris from falling into the holes when the Image Pasting Barrier is not in use.



Figure 13-3 Image Pasting Barrier

- 12.) If the barrier locking pins do not align with the receptor brackets:
 - a.) Remove the barrier.
 - b.) Unscrew 1 set of receptor screws, leaving the receptor bracket in the hole.
 - c.) Bring the barrier back over the receptor brackets and engage the barrier pins.
 - d.) Measure the distance between the barrier and the wall stand on both sides. Align the barrier so that both measurements are equal.
 - e.) Rotate the receptor 60 degrees and mark the locations for three new 6 mm holes.
 - f.) Drill three new holes and mount the receptor bracket into place.

- 13.) There are 3 leveling set screws on each receptor bracket. You will only level the receptor brackets if the floor is so severely out of level that the barrier pins cannot be inserted into the receptor brackets.
- 14.) Once the receptor brackets are secured, the barrier may be rolled into position and the pins locked into the receptor brackets. Press on both of the side foot pedals to lock the barrier into place.
- 15.) Install the image pasting barrier measurement labels as follows:

- Note:
- The labels give a measurement of the distance between the center of the patient and the mylar surface. As such, the labels should be attached so that the lower numbers are closer to the mylar surface.
 - Before placing the labels, clean the sides of the lateral arm bars and the recessed area in the footstand with Windex, Formula 409, or soap and water. Dry thoroughly.

a.) Install the footstand labels:

- * The footstand labels are the wider labels.
- * Based on the customer's preference, select the metric or english measurement labels.
- * Place the labels in the recessed areas on the footstand with the lower numbered ends closest to the mylar surface. [See Figure 13-4.](#)

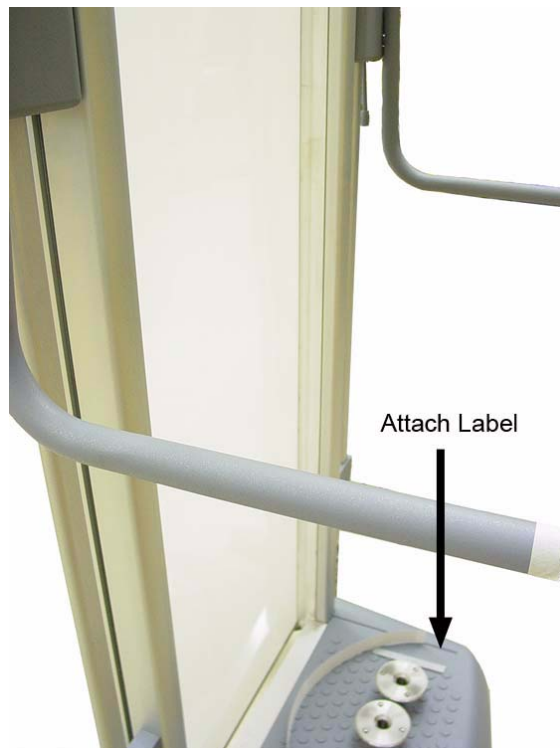


Figure 13-4 Footstand Labels

b.) Install the lateral arm labels (*these labels may already be factory-installed*):

- * The lateral arm labels are the narrower labels.
- * These should go on the sides of the lateral arms when the arms are rotated all the way down as shown in [Figure 13-5.](#)
- * To gauge the position along the arm for the label, the 45 cm mark should be 25 mm

or 1 inch from the end of the arm as shown in [Figure 13-6](#).

- * If not using the metric mark, the 18-inch mark should be $\frac{3}{4}$ of an inch from the end of the arm.

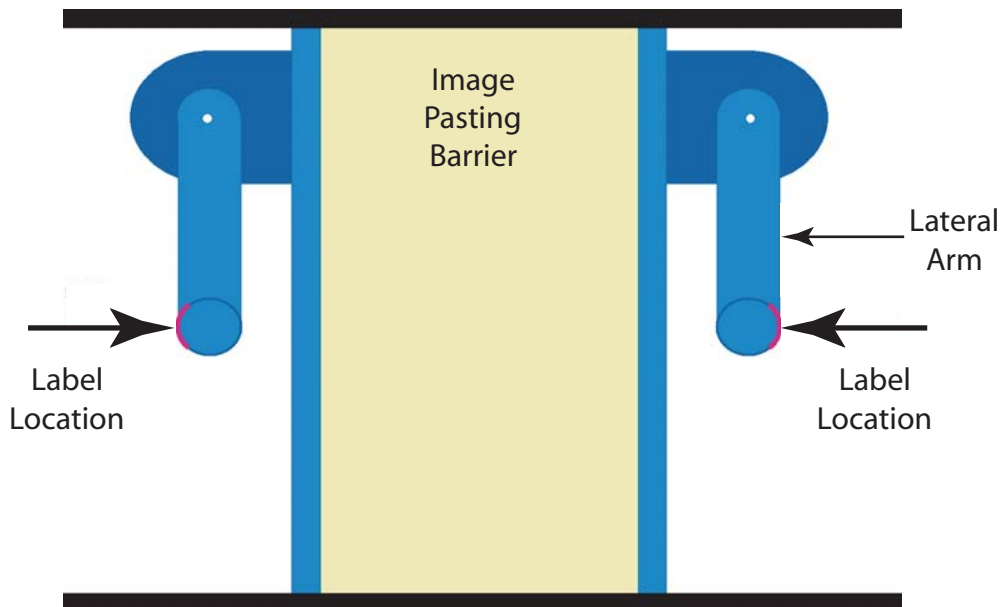


Figure 13-5 Lateral Arm Labels

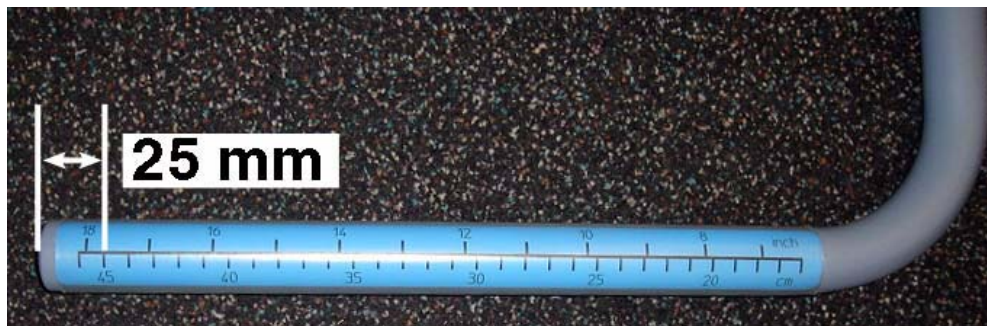


Figure 13-6 Lateral Arm Label Placement