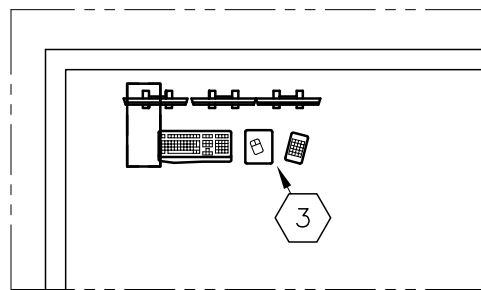
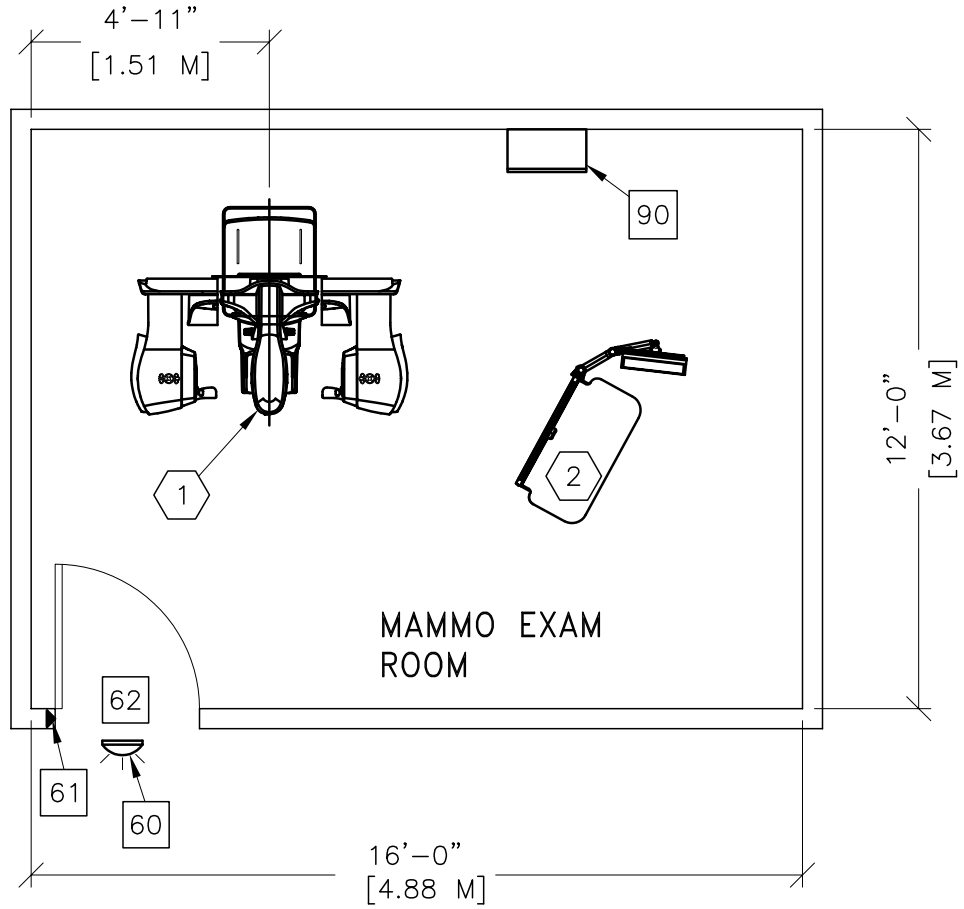


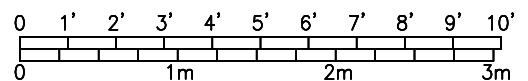


SENOGRAPHE PRISTINA



(VERIFY LOCATION)

ROOM DIMENSIONS	LENGTH & WIDTH	CEILING HEIGHT
MINIMUM:	10'-0" x 12'-0" [3.5m x 3.7m]	8'-0" [2.4m]



ROOM PLAN LOCATED ON PAGE 9-32

ITEM	QUANTITY	ITEM DESCRIPTION	WEIGHT	HEAT OUTPUT
①	1	PRISTINA GANTRY	925 lbs	2061 btu
②	1	CONTROL STATION	363 lbs	716 btu
③	1	IRIS WORKSTATION DIAGNOSE MODE	48 lbs	
<p>***** CUSTOMER/CONTRACTOR SUPPLIED AND INSTALLED ITEMS *****</p>				
60		X-RAY ON WARNING LIGHT - AVAILABLE FROM GE SUPPLY CALL: 800-200-9760 GE CAT. NO. WXIABWW-0F-XIU-24(LED) <NEEDED ONLY IF REQUIRED BY STATE/LOCAL CODES>		
61		DOOR LIMIT SWITCH <NEEDED ONLY IF REQUIRED BY STATE/LOCAL CODES>		
62		MINIMUM DOOR OPENING FOR EQUIPMENT DELIVERY IS 28 IN. W x 79 IN. H [711mm x 2006mm], CONTINGENT ON A 60 IN. [1524mm] CORRIDOR WIDTH		
90		MAIN DISCONNECT CONTROL, WALL MOUNTED		

ENVIRONMENT

Ambient Operation Temperature: 59-95° F (15-35° C)
 Allowable Temperature Change: 3.6° F (1.5° C) per hour
 Humidity: 40-75 percent non condensing
 Allowable Humidity Change: 10 percent per hour
 Max - Altitude: 9840 ft. (2999 M) above sea level