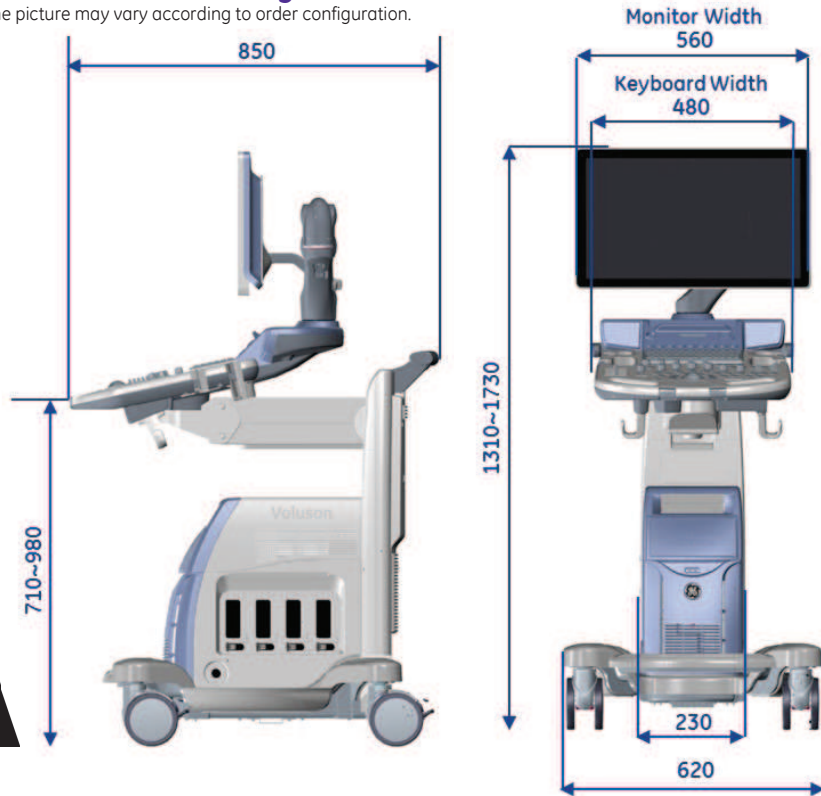


# Voluson S6/S8

## Physical Dimensions and Weight (mm) :

Please Note: The picture may vary according to order configuration.



## External Inputs and Outputs :

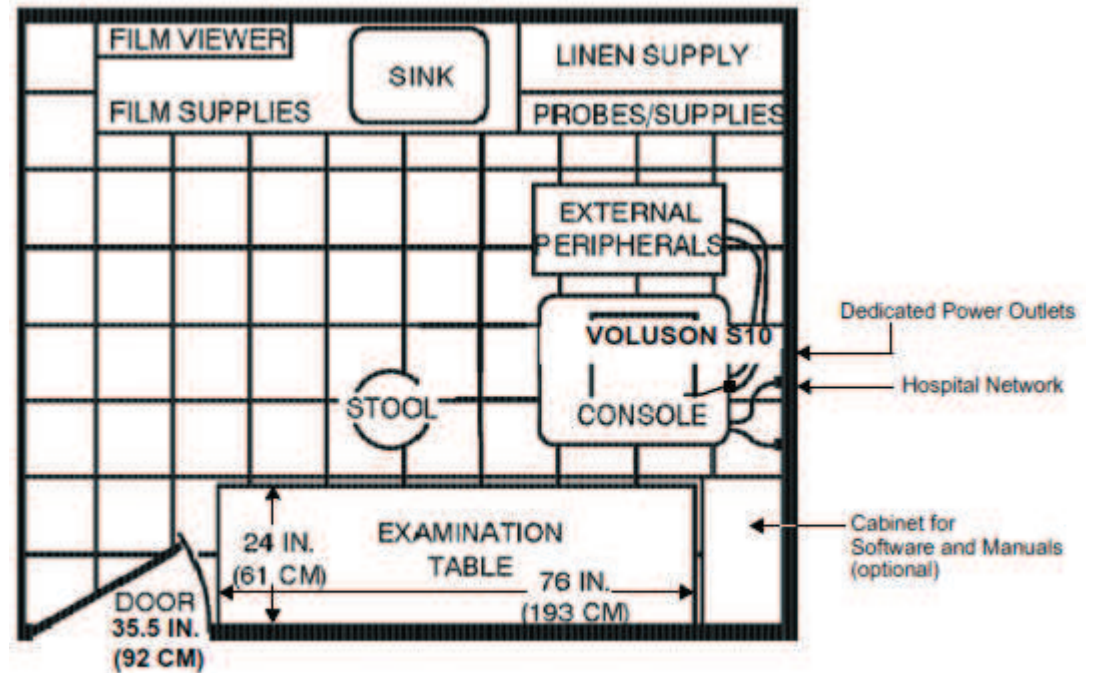


## Environmental Requirements

<b>Operating Temperature</b>	18 to 30 C (64 to 86 F)
<b>Operating Humidity</b>	30 to 80% rH, non-condensing
<b>Heat Dissipation</b>	<b>S6:</b> 680 BTU/Hour , <b>S8:</b> 780 BTU/hour +300 Btu for each person. Without on-board peripherals
<b>Storage Temperature</b>	-10 to 50 C (14 to 122 F)
<b>Storage Humidity</b>	10 to 90% rH, non-condensing
<b>Lighting</b>	Combination lighting system (dim/bright) is recommended. <b>Keep in mind that lighting controls and dimmers can be a source of EMI which could degrade image quality.</b>

Please Note: For more information please refer to the product's service & user manuals.

## Recommended Ultrasound Room Layout 4.3m x 5.2m (14ft x 17ft)



## Electrical Specifications

<b>Voltage</b>	100 -120 VAC +- %10 / 9.0...7.0 A / 50, 60 Hz (2%) 220 - 240 VAC +- %10 / 4.0...3.7 A / 50, 60 Hz (2%)
<b>Power Consumption</b>	900 VA, including all on board peripherals.
<b>Site Power Outlets</b>	A dedicated AC power outlet must be within reach of the unit without extension cords
<b>Power outage may occur</b>	Requires a dedicated single branch circuit. To avoid circuit overload and possible loss of critical care equipment, make sure you DO NOT have any other equipment operating on the same circuit.
<b>Acoustic Noise Output</b>	max. 55 dB(A)