

Save your providers an hour a day¹ with Hospital Connect

Seamless clinical data integration

Key to efficiently increasing the value of care delivered.

The value of patient care is the single most important factor of success for healthcare organizations transitioning to value-based care. As a leader in standards-based interoperability, GE Healthcare has demonstrated that seamless clinical data integration among different providers and healthcare organizations can efficiently increase that value.









- Streamlined data exchange and reconciliation help reduce staff time to prepare and update patient records for physician review.
- Integrating exchanged data into the routine provider workflow can enable providers to spend an hour less per day in chart reviews.
- Real-time access to needed data helps providers compile a more complete patient context for decision-making before the patient leaves.



Top Performer

*for interoperability impact on patient care**

Source: KLAS, Interoperability 2016 From a Clinical View: Frustrating Reality or Hopeful Future 2016, Figure 16, p. 26.

 Ambulatory Practice	 Time savings The Oregon Clinic expects to save each provider 1 hour per day	 Enhanced care quality access in real-time to needed data from multiple sources	 Reduced cost of care
 Hospital System	 Reduced cost of care	 Increased access to data	 Enhanced care quality

Real-time seamless integration

Real-time clinical data integration, not just data exchange, is critical for efficient care coordination across settings. Simple exchange of electronic clinical documents without workflow integration, while valuable, is often not much more efficient than faxing. In contrast, the clinical data integration solution from GE Healthcare, informed by user-centered design, does more than just exchange information with hospitals and other ambulatory practices; it also enables staff to extract clinically-relevant information out of clinical documents² and import them into the chart as structured data.

Seamlessly. In real-time.

As a result, physicians can easily access and review important information within their normal workflow.

"The ability to share data is why we like [the] Centricity Practice Solution EMR [module] and why we have had a lot of success. When we work with all of our other products, we find it is easiest to get data in and out of this EMR. This is because we know it, but it is also built well to support data sharing... We haven't run into any situations where we haven't been able to integrate the EMR with other systems, either on the clinical or the business side."

CIO, April 10, 2017, KLAS Commentary

¹ The Oregon Clinic, expected time savings.

² Such as Consolidated Clinical Documentation Architecture (CCDA) documents.



Easily reconcile imported problems, medications and allergies against the medical record and seamlessly integrate them into the patient record for efficient physician review

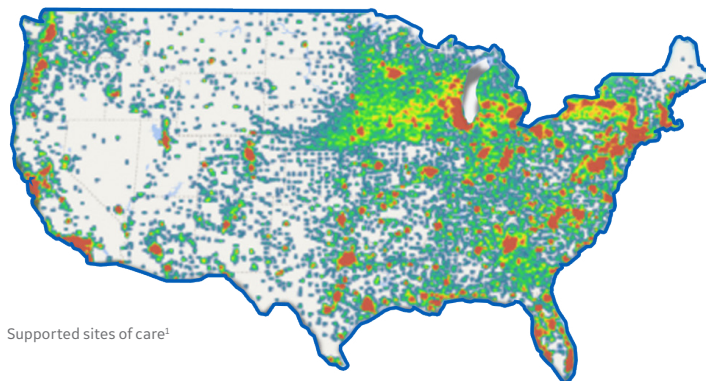
Parse other sections of the CCDA, such as progress notes and H&P

Extract lab data transmitted within the CCDA and display the data in a standardized lab report format so physicians can easily absorb the information

How it works:

Clinical data integration solution

- **Bi-directional interface with Carequality** – Exchange data with any hospital or other ambulatory practice using a network or EMR that enables a connection under the Carequality Interoperability Framework, such as Epic® Care Everywhere.
- **Search capability** – Query the sending EMR for patient records – and filter those findings by document type and timeframe.
- **Selective clinical reconciliation tool** – Leverage visual cues to easily review and evaluate the available information and, with a quick click of a checkbox, integrate selected information that is clinically relevant into the patient's record *in a format that appears native to the receiving system*. Query, reconcile, and integrate data either in advance during chart preparations or on-demand while the patient is being seen.
- **Continuous process improvement** – Access our experts to help you adopt the new workflows, provide efficient end-user education, and accelerate the deployment across multiple locations or practices to allow you to realize the benefits faster.



Your choices matter

Value-based payment and care delivery is the new reality, and the health IT company that you entrust with your digital future is important. GE Healthcare is developing innovative software and services to help guide our customers through the transition to value-based care. Centricity™ Practice Solution, our integrated EMR and practice management system, with its ability to seamlessly connect your practice to other organizations in your community, forms a solid foundation for this transition.

LEARN MORE

Click here to contact a representative, or email inside.sales@med.ge.com or your VAR representative for more information

Centricity Practice Solution is a customizable, interoperable, and progressive system that helps ambulatory practices



Increase
Clinical
Efficiency



Enhance
Care
Quality



Strengthen
Financial
Performance

¹ Sites of care supported by current Carequality Implementers, once they achieve full rollout.

