

ROOM PLAN LOCATED ON PAGE 1-160

ITEM	QUANTITY	ITEM DESCRIPTION	WEIGHT	HEAT OUTPUT
①	1	TUBE STAND	760 lbs	450 btu
②	1	PROTEUS WALL STAND	319 lbs	
③	1	CAN CONNECTION BOX	11 lbs	
④	1	PROTEUS XR/F ELEVATING TABLE	617 lbs	423 btu
⑤	1	GENERATOR	209 lbs	542 btu
⑥	1	AERO DR INTERFACE UNIT	24 lbs	112 btu
⑦	1	AERO DR DOCKING STATION/BATTERY CHARGER	13 lbs	98 btu
⑧	1	AERO DR ACCESS POINT (LOCATION TO BE DETERMINED BY FIELD AT INSTALL)	2 lbs	112 btu
⑨	1	CS7 CONTROL CONSOLE	37 lbs	1774 btu

ENVIRONMENT

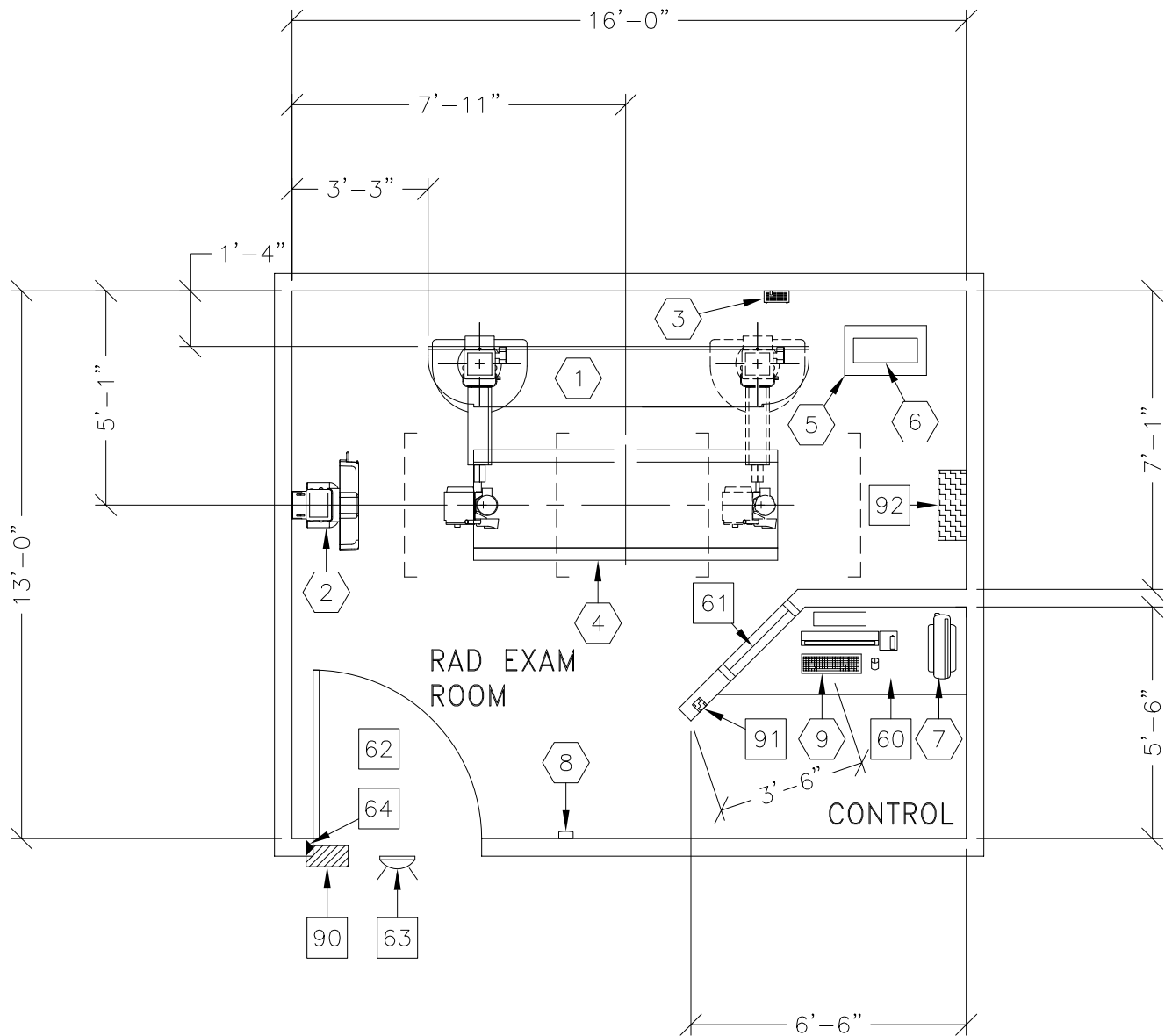
Ambient Operation Temperature: 10-40° (C) [50-104° (F)]
 Allowable Temperature Change: max 10° (C) [18° (F)] per hour
 Humidity: in use 30-75% non condensing
 Allowable Humidity Change: not specified
 Max - Altitude: at 15° (C): 3012M [9,882 FT.]

ROOM PLAN LOCATED ON PAGE 1-160

ITEM ◻	QUANTITY	ITEM DESCRIPTION	WEIGHT	HEAT OUTPUT
		***** CUSTOMER/CONTRACTOR SUPPLIED AND INSTALLED ITEMS *****		
60		COUNTER TOP FOR EQUIPMENT- MINIMUM DEPTH 24 IN. AND ADDITIONAL SHELVING MAY BE REQUIRED BELOW COUNTER TOP FOR PC TOWER. PROVIDE GROMMETED OPENINGS AS REQUIRED TO ROUTE CABLES.		
61		CONTROL WALL TO CEILING WITH LEAD GLASS VIEWING WINDOW.		
62		MINIMUM DOOR OPENING FOR EQUIPMENT DELIVERY IS 900MM W X 2030MM H [35.4" W X 80" H] CONTINGENT ON A 2400MM [8'-0"] CORRIDOR WIDTH		
63		X-RAY ON WARNING LIGHT - AVAILABLE FROM GEXPRO. CALL: 800-200-9760 GE CAT. NO. WXIABWW-0F-XIU		
64		DOOR LIMIT SWITCH <NEEDED ONLY IF REQUIRED BY STATE/ LOCAL CODES>		
90		X-RAY ROOM WARNING LIGHT CONTROL PANEL. REFERENCE JUNCTION POINT 'XRLC' ON SHEET 'E1' FOR DETAILED DESCRIPTION -E4502RL FOR WARNING LIGHT CONTROL ONLY.		
91		EMERGENCY OFF SWITCH <NEEDED ONLY IF REQUIRED BY STATE/LOCAL CODES>		
92		MAIN DISCONNECT, REFERENCE JUNCTION POINT 'A' ON SHEET E1 <20" [508mm]W x 30" [762mm]H x 8" [203mm]D>		

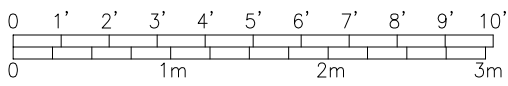


PROTEUS XR/f AT



THE FOLLOWING SHOTS ARE NOT AVAILABLE IN THIS LAYOUT:

180° OFF-TABLE IMAGING



ROOM DIMENSIONS	LENGTH & WIDTH	CEILING HEIGHT
MINIMUM:	VARIABLE: BASED ON SITE CONDITIONS AND APPLICATION LIMITATIONS	8'-6" [2.6m]