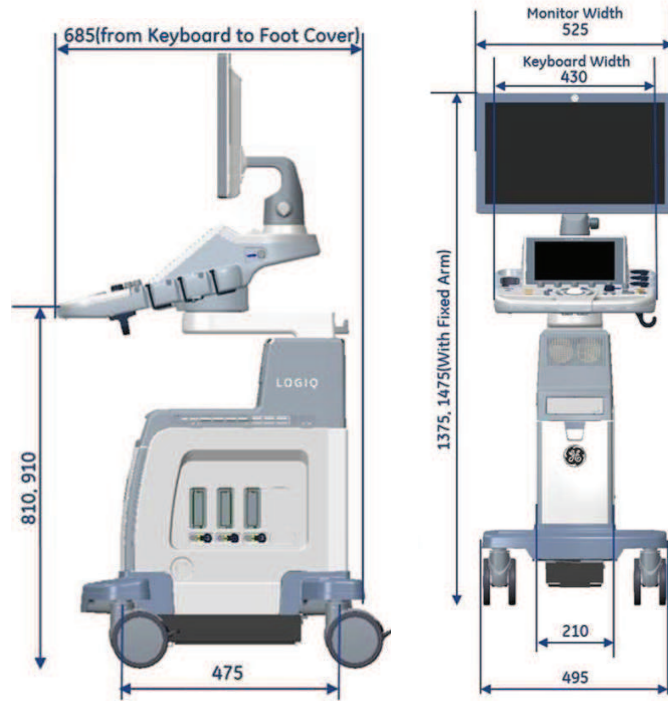


# LOGIQ P7 & P9

## Physical Dimensions and Weight (mm) :

Please Note: The picture may vary according to order configuration.



## External Inputs and Outputs :

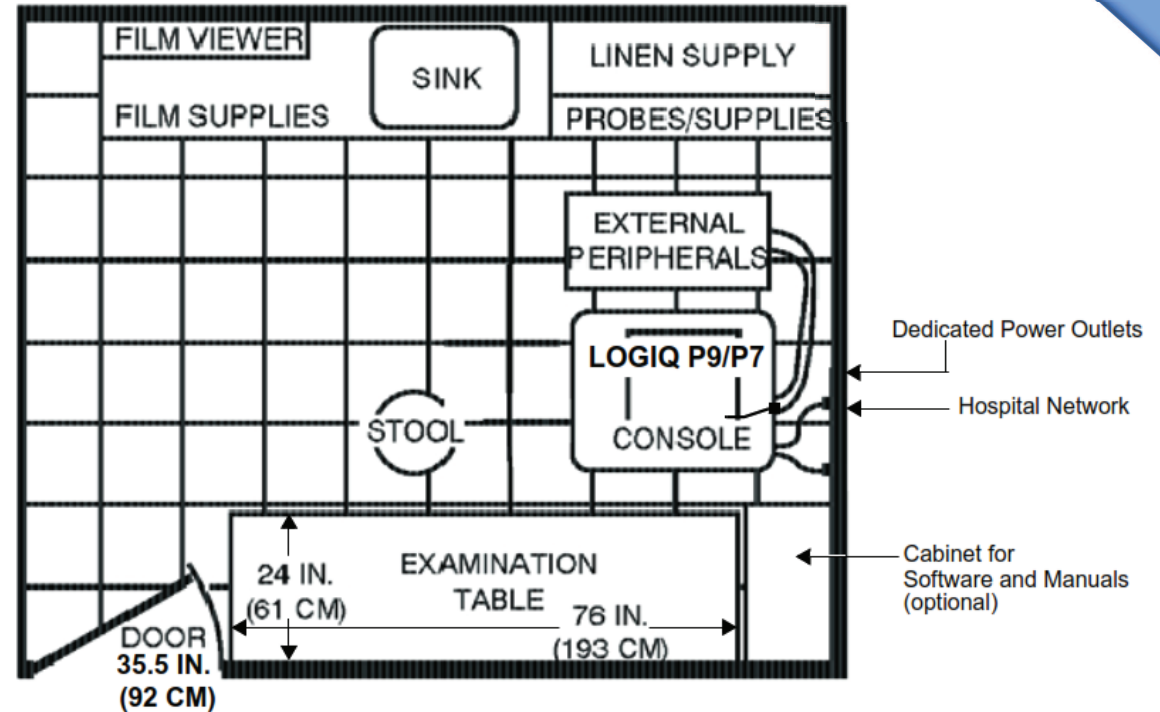


## Environmental Requirements

<b>Operating Temperature</b>	10 to 35 C (50 to 96F)
<b>Operating Humidity</b>	30 to 80 % rH, non-condensing , Pressure : 700 -1060 hPa
<b>Heat Dissipation</b>	680 BTU/hour +300 Btu for each person. Without lights, other equipment etc.
<b>Storage Temperature</b>	-10 to 50 C (-14 to 122 F) ,
<b>Storage Humidity</b>	10 % - 90 % rH, non-condensing , Pressure : 700 -1060 hPa
<b>Lighting</b>	Combination lighting system (dim/bright) is recommended. <b>Keep in mind that lighting controls and dimmers can be a source of EMI which could degrade image quality.</b>

Please Note: For more information please refer to the product's service & user manuals.

## Recommended Floor Plan 4.3m x 5.2m (14ft x 17ft)



## Electrical Specifications

<b>Voltage</b>	100 - 120 VAC ±10% 5.0 ... 4.1 A 50, 60 Hz (±2%) 220 - 240 VAC ±10% 2.2 ... 2.0 A 50, 60 Hz (±2%)
<b>Power Consumption</b>	500VA
<b>Site Power Outlets</b>	A dedicated AC power outlet must be within reach of the unit without extension cords
<b>Inrush current</b>	Inrush current is not a factor to consider due to the inrush current limiting properties of the power supplies.
<b>Power outage may occur</b>	Requires a dedicated single branch circuit. To avoid circuit overload and possible loss of critical care equipment, make sure you DO NOT have any other equipment operating on the same circuit.
<b>Acoustic Noise output</b>	Less than 50 dB(A)