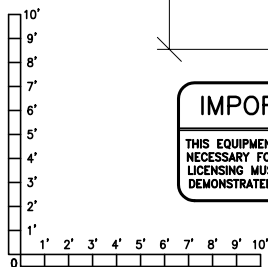
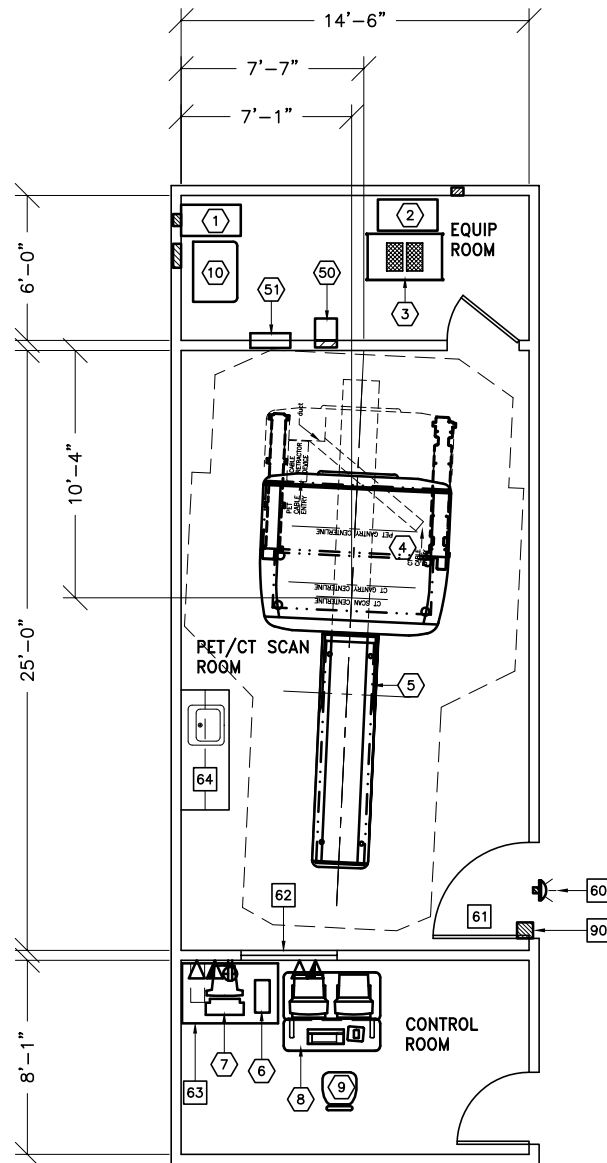




DISCOVERY LS

RECOMMENDED EXAM ROOM
CEILING HEIGHT 9'-0" [2.74m]



IMPORTANT CUSTOMER READINESS ALERT:
 THIS EQUIPMENT INVOLVES THE USE OF RADIOACTIVE ISOTOPES, INCLUDING THOSE SOURCES NECESSARY FOR EQUIPMENT CALIBRATION. APPROPRIATE REGULATORY COMPLIANCE AND LICENSING MUST BE ARRANGED BY THE CUSTOMER EARLY IN THE PLANNING PROCESS AND THEN DEMONSTRATED/AVAILABLE FOR EQUIPMENT INSTALLATION.

ROOM DIMENSIONS	LENGTH & WIDTH	CEILING HEIGHT
MIN. SCAN RM:	24'-0" X 14'-0" [7.31m X 4.26m]	8'-6" [2.59m]
MIN. EQUIP. RM:	6'-0" X 13'-10" [1.83m X 4.21m]	8'-0" [2.44m]

SEE APPENDIX "A" FOR POWER SPECIFICATIONS

ROOM PLAN LOCATED ON PAGE 12-10

ITEM ⬡	QUANTITY	ITEM DESCRIPTION	WEIGHT	HEAT OUTPUT
⬡1	1	CT UPS SYSTEM	551 lbs	3689 btu
⬡2	1	PET UPS SYSTEM	551 lbs	3689 btu
⬡3	1	ELECTRONICS CABINET	418 lbs	11945 btu
⬡4	1	DISCOVERY LS SCANNER	10582 lbs	30365 btu
⬡5	1	PATIENT TABLE <WITHOUT PATIENT>	1854 lbs	699 btu
⬡6	1	LARGE SCSI BOX	30 lbs	784 btu
⬡7	1	ENTEGRA WORKSTATION		
⬡8	1	OPERATOR'S CONSOLE / COMPUTER	661 lbs	10238 btu
⬡9	1	OPERATOR'S CHAIR		
⬡10	1	POWER DISTRIBUTION UNIT	800 lbs	3412 btu
***** CUSTOMER/CONTRACTOR SUPPLIED AND INSTALLED ITEMS *****				
⬡60		X-RAY ON WARNING LIGHT - AVAILABLE FROM GE SUPPLY CALL: 800-200-9760 GE CAT. NO. WXIABWW-0F-XIU		
⬡61		MINIMUM DOOR OPENING FOR EQUIPMENT DELIVERY IS 44 IN. W x 83 IN. H [1118mm x 2108mm], CONTINGENT ON A 96 IN. [2438mm] CORRIDOR WIDTH ON A 96 IN. [2438mm] CORRIDOR WIDTH		
⬡62		CONTROL WALL TO CEILING WITH LEAD GLASS VIEWING WINDOW.		
⬡63		TABLE		
⬡64		COUNTER TOP WITH SINK, BASE AND WALL CABINETS		
⬡90		X-RAY ROOM WARNING LIGHT CONTROL PANEL REFERENCE JUNCTION POINT 'WLC' ON SHEET 'E1' FOR DETAILED DESCRIPTION -E4502RL FOR WARNING LIGHT CONTROL ONLY.		

ENVIRONMENT

Ambient Operation Temperature: 65-75° F (18-24° C)
 Allowable Temperature Change: 5° F (3° C) per hour
 Humidity: 30-60 percent non condensing
 Allowable Humidity Change: 5 percent per hour
 Max - Altitude: 8000 ft. (2438 M) above sea level