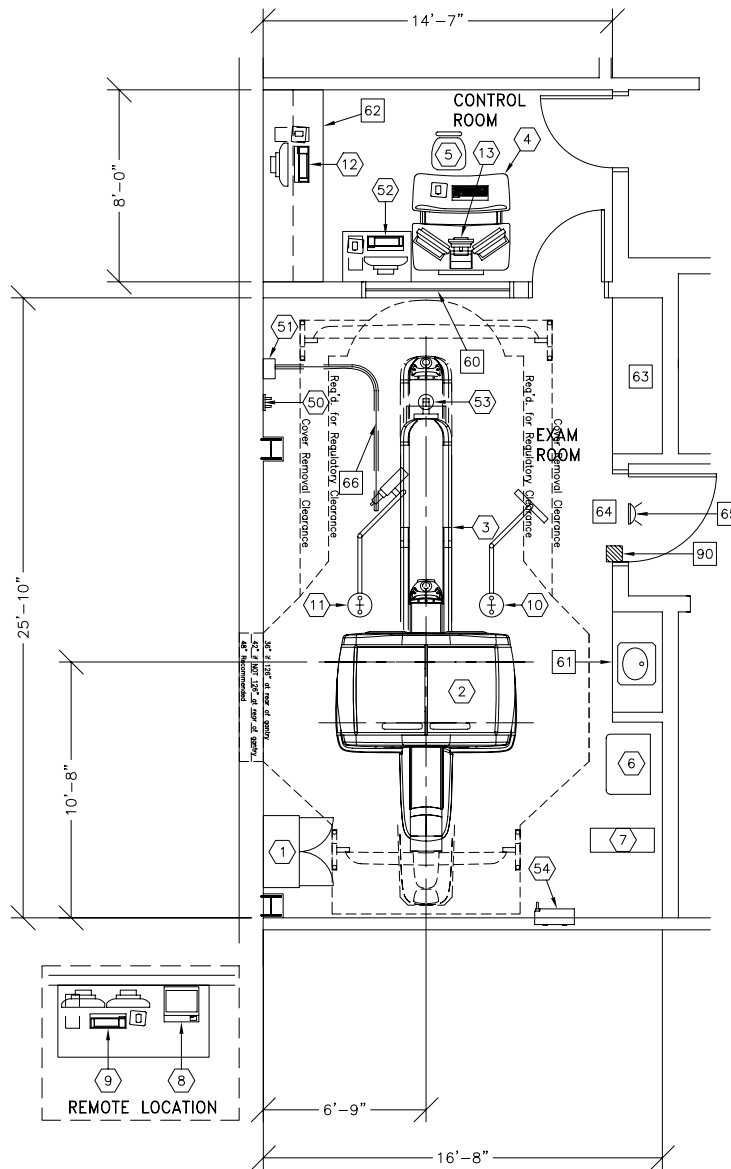




DISCOVERY VCT

RECOMMENDED EXAM ROOM
CEILING HEIGHT 9'-0" [2.74m]



NOTE: THIS IS A SUGGESTED LAYOUT BASED OFF OF GE HEALTHCARE PRE-INSTALL MANUAL. PLEASE CONTACT LOCAL PROJECT MANAGER OF INSTALLATION IF YOUR ROOM LAYOUT OR DIMENSIONS ARE DIFFERENT THAN THE LAYOUT SHOWN.

IMPORTANT CUSTOMER READINESS ALERT:
THIS EQUIPMENT INVOLVES THE USE OF RADIOACTIVE ISOTOPES, INCLUDING THOSE SOURCES NECESSARY FOR EQUIPMENT CALIBRATION. APPROPRIATE REGULATORY COMPLIANCE AND LICENSING MUST BE ARRANGED BY THE CUSTOMER EARLY IN THE PLANNING PROCESS AND THEN DEMONSTRATED/AVAILABLE FOR EQUIPMENT INSTALLATION.

DUE TO LOCATION OF CEILING MOUNTED EQUIPMENT CUSTOMER FACES THE RISK OF COLLISION BETWEEN COMPONENTS

NOTE: DELIVERY PATH DOWN CORRIDORS FOR GANTRY'S AND TABLE MUST BE EVALUATED PRIOR TO CONSTRUCTION, AS 90 DEGREE TURNS REQUIRE SPECIFIC CORRIDOR WIDTH.

ROOM DIMENSIONS	LENGTH & WIDTH	CEILING HEIGHT
MIN. SCAN RM:	25'-6" X 14'-0" [7.77m X 4.2m]	9'-0" [2.7m]

SEE APPENDIX "A" FOR POWER SPECIFICATIONS

ROOM PLAN LOCATED ON PAGE 12-16

ITEM	QUANTITY	ITEM DESCRIPTION	WEIGHT	HEAT OUTPUT
①	1	STORAGE CABINET <EMPTY CABINET WEIGHT>	90 lbs	
②	1	DISCOVERY VCT GANTRY	8710 lbs	58195 btu
③	1	PATIENT TABLE <WITHOUT PATIENT>	1854 lbs	699 btu
④	1	OPERATOR'S CONSOLE / COMPUTER	493 lbs	8631 btu
⑤	1	OPERATOR'S CHAIR		
⑥	1	POWER DISTRIBUTION UNIT	800 lbs	3412 btu
⑦	1	UPS SYSTEM	619 lbs	5122 btu
⑧	1	COLOR PRINTER		
⑨	1	ADVANTAGE WORKSTATION WITH TWO LCD MONITORS	81 lbs	1109 btu
⑩	1	LCD MONITOR	61 lbs	300 btu
⑪	1	INJECTOR HEAD ON OVERHEAD COUNTERPOISED SUSPENSION.	79 lbs	
⑫	1	ADVANTAGE WORKSTATION WITH ONE LCD MONITOR	46 lbs	682 btu
⑬	1	INJECTOR CONTROL AND ELECTRONICS	22 lbs	320 btu
⑤①	1	VARIAN CAMERA HOLDER <WHEN CAMERA IS IN STANDBY POSITION>	13 lbs	
⑤②	1	VARIAN POWER SUPPLY MODULE <GE PROJ MGR: PREINSTALL ITEM, PRE-ORDER FROM VARIAN>	48 lbs	819 btu
⑤③	1	VARIAN OPERATORS WORKSTATION	8 lbs	341 btu
⑤④	1	VARIAN CAMERA AND BRACKET	132 lbs	
		***** CUSTOMER/CONTRACTOR SUPPLIED AND INSTALLED ITEMS *****		
⑥①		LEAD GLASS WINDOW		
⑥②		COUNTER TOP WITH SINK AND BASE CABINETS		
⑥③		COUNTER TOP WITH WALL CABINETS		
⑥④		COUNTER TOP FOR EQUIPMENT- PROVIDE GROMMETED OPENINGS AS REQUIRED TO ROUTE INTERCONNECT CABLES TO RACEWAY BELOW COUNTERTOP.		
⑥⑤		MINIMUM DOOR OPENING FOR EQUIPMENT DELIVERY IS 44 IN. W x 83 IN. H [1118mm x 2108mm], CONTINGENT ON A 96 IN. [2438mm] CORRIDOR WIDTH X-RAY ON WARNING LIGHT - AVAILABLE FROM GE SUPPLY CALL: 800-200-9760 GE CAT. NO. WXIABWW-DF-XIU		
⑥⑥		CURTAIN RAIL SUSPENDED FROM FALSE CEILING FOR VARIAN CABLE		
⑨①		X-RAY ROOM WARNING LIGHT CONTROL PANEL REFERENCE JUNCTION POINT 'WLC' ON SHEET 'E1' FOR DETAILED DESCRIPTION -E4502RL FOR WARNING LIGHT CONTROL ONLY.		

ENVIRONMENT

Ambient Operation Temperature: 65-75° F (18-24° C)
 Allowable Temperature Change: 5° F (3° C) per hour
 Humidity: 30-60 percent non condensing
 Allowable Humidity Change: 5 percent per hour
 Max - Altitude: 8000 ft. (2438 M) above sea level