


ROOM PLAN LOCATED ON PAGE 1-162

| ITEM | QUANTITY | ITEM DESCRIPTION | WEIGHT | HEAT OUTPUT |
|------|----------|---|---------|-------------|
| ① | 1 | TUBE STAND | 760 lbs | 450 btu |
| ② | 1 | PROTEUS WALL STAND | 319 lbs | |
| ③ | 1 | CS7 CONTROL CONSOLE | 37 lbs | 1774 btu |
| ④ | 1 | PROTEUS XR/F ELEVATING TABLE | 617 lbs | 423 btu |
| ⑤ | 1 | GENERATOR | 209 lbs | 542 btu |
| ⑥ | 1 | AERO DR INTERFACE UNIT | 24 lbs | 112 btu |
| ⑦ | 1 | AERO DR DOCKING STATION/BATTERY CHARGER | 13 lbs | 98 btu |
| ⑧ | 1 | AERO DR ACCESS POINT <LOCATION TO BE DETERMINED BY FIELD AT INSTALL> | 2 lbs | 112 btu |

ENVIRONMENT

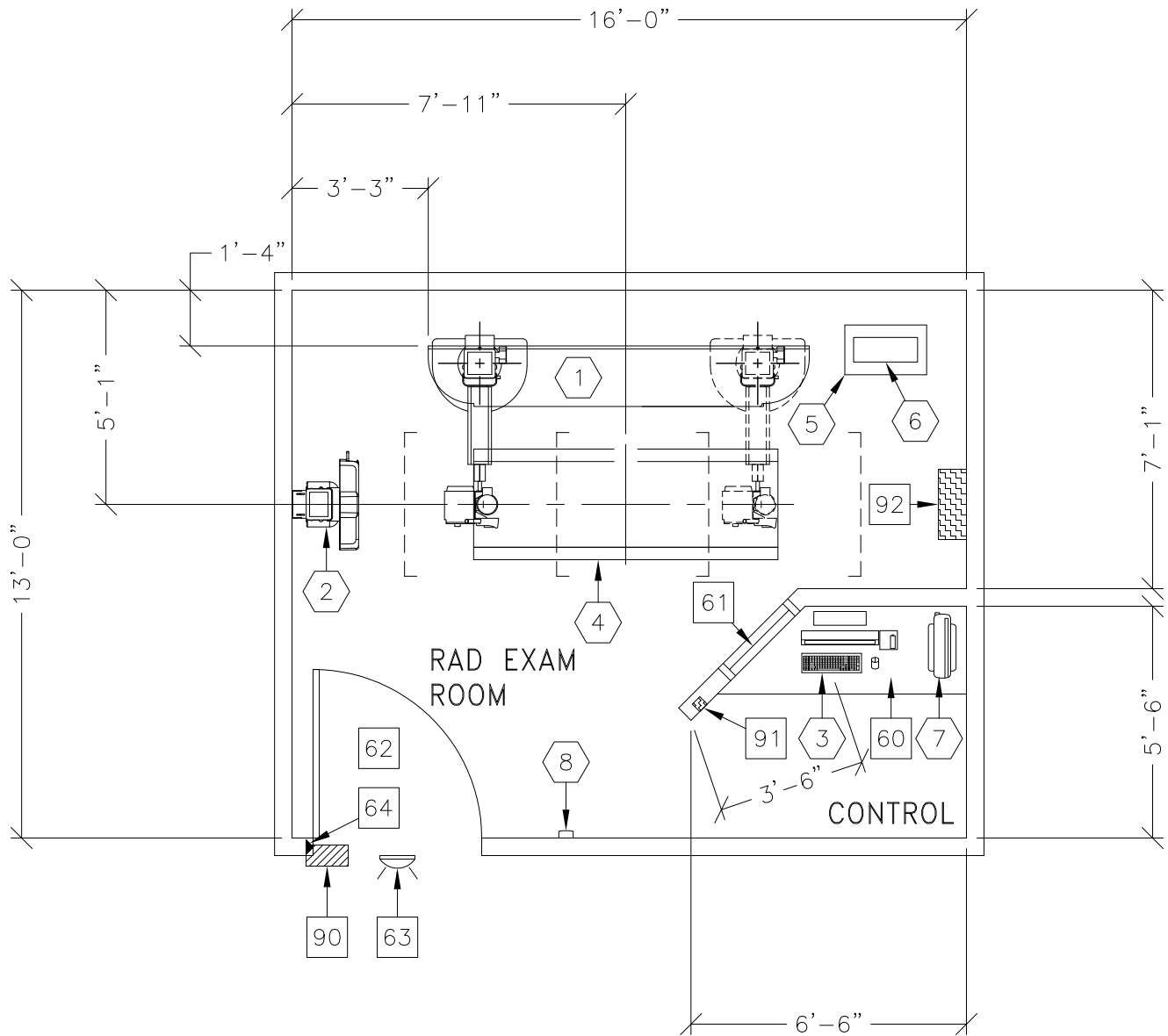
Ambient Operation Temperature: 10-40° <C> [50-104° <F>]
 Allowable Temperature Change: max 10° <C> [18° <F>] per hour
 Humidity: in use 30-75% non condensing
 Allowable Humidity Change: not specified
 Max - Altitude: at 15° <C>: 3012M [9,882 FT.]

ROOM PLAN LOCATED ON PAGE 1-162

| ITEM  | QUANTITY | ITEM DESCRIPTION | WEIGHT | HEAT OUTPUT |
|---|----------|--|--------|-------------|
| | | ***** CUSTOMER/CONTRACTOR SUPPLIED AND INSTALLED ITEMS ***** | | |
| [60] | | COUNTER TOP FOR EQUIPMENT- MINIMUM DEPTH 24 IN. AND ADDITIONAL SHELVING MAY BE REQUIRED BELOW COUNTER TOP FOR PC TOWER. PROVIDE GROMMETED OPENINGS AS REQUIRED TO ROUTE CABLES. | | |
| [61] | | CONTROL WALL TO CEILING WITH LEAD GLASS VIEWING WINDOW. | | |
| [62] | | MINIMUM DOOR OPENING FOR EQUIPMENT DELIVERY IS 900MM W X 2030MM H [35.4" W X 80" H] CONTINGENT ON A 2400MM [8'-0"] CORRIDOR WIDTH | | |
| [63] | | X-RAY ON WARNING LIGHT - AVAILABLE FROM GEXPRO. CALL: 800-200-9760 GE CAT. NO. WXIABWW-0F-XIU | | |
| [64] | | DOOR LIMIT SWITCH <NEEDED ONLY IF REQUIRED BY STATE/ LOCAL CODES> | | |
| [90] | | X-RAY ROOM WARNING LIGHT CONTROL PANEL. REFERENCE JUNCTION POINT 'XRLC' ON SHEET 'E1' FOR DETAILED DESCRIPTION -E4502RL FOR WARNING LIGHT CONTROL ONLY. | | |
| [91] | | EMERGENCY OFF SWITCH <NEEDED ONLY IF REQUIRED BY STATE/LOCAL CODES> | | |
| [92] | | MAIN DISCONNECT, REFERENCE JUNCTION POINT 'A' ON SHEET E1 <20" [508mm]W x 30" [762mm]H x 8" [203mm]D> | | |

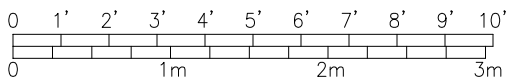


PROTEUS XR/f ET



THE FOLLOWING SHOTS ARE NOT AVAILABLE IN THIS LAYOUT:

180° OFF-TABLE IMAGING



| ROOM DIMENSIONS | LENGTH & WIDTH | CEILING HEIGHT |
|-----------------|---|----------------|
| MINIMUM: | VARIABLES: BASED ON SITE CONDITIONS AND APPLICATION LIMITATIONS | 8'-6" [2.6m] |