

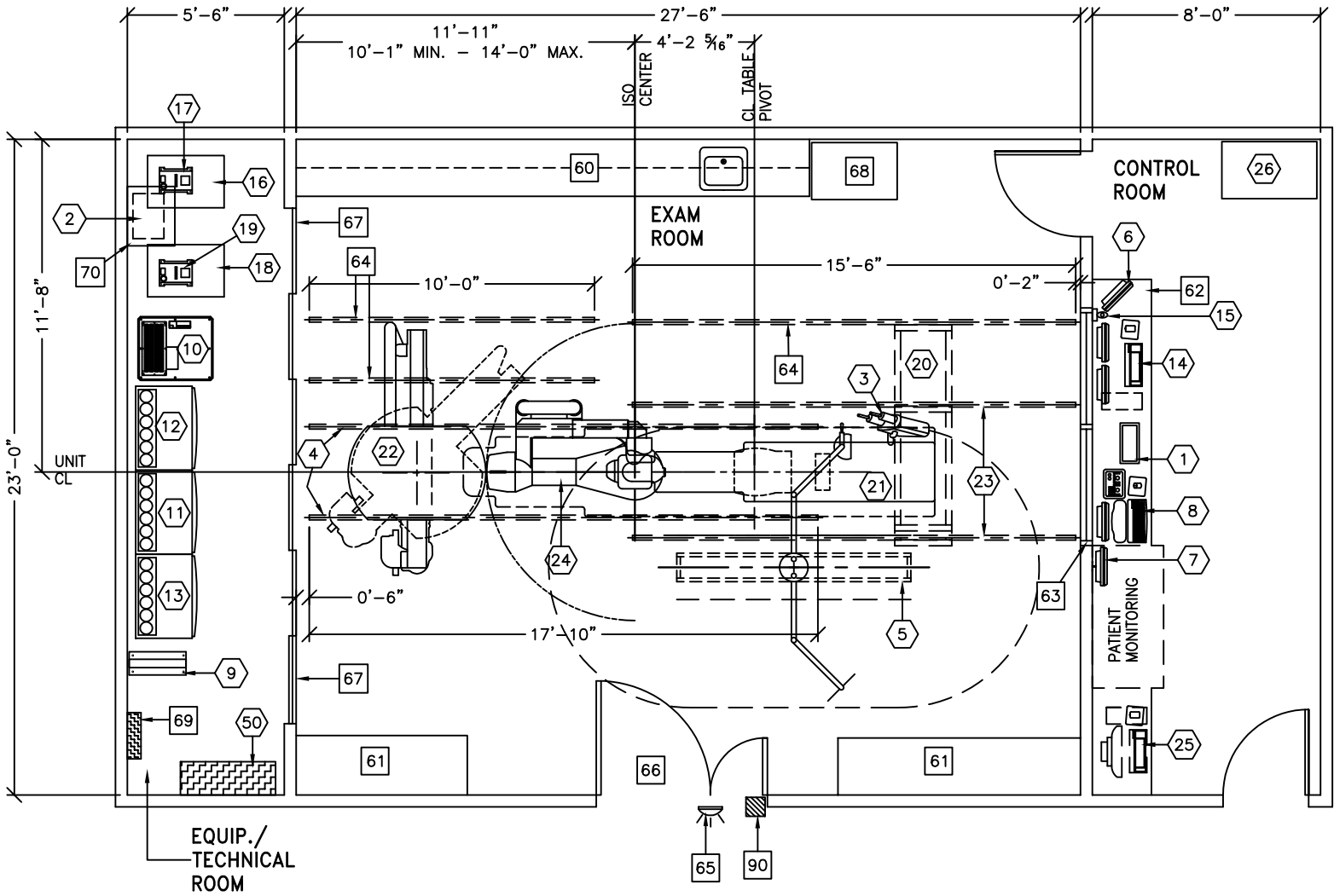


GE Healthcare Technologies

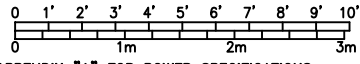
INSTALLATION SERVICES DESIGN CENTER 12/05/07, REVISION 3

SECTION 4 PAGE 5-84

INNOVA 2121-IQ/3131-IQ BIPLANE



| ROOM DIMENSIONS | LENGTH & WIDTH | CEILING HEIGHT |
|-----------------|---------------------------------|----------------|
| MINIMUM: | 26'-0" x 20'-6" [7.92m x 6.24m] | 9'-4" [2.84m] |



SEE APPENDIX "A" FOR POWER SPECIFICATIONS


ROOM PLAN LOCATED ON PAGE 5-84

| ITEM | QUANTITY | ITEM DESCRIPTION | WEIGHT | HEAT OUTPUT |
|------|----------|--|----------|-------------|
| ① | 1 | REMOTE CONTROL FOR INJECTOR <OPTION> | 4 lbs | |
| ② | 1 | INJECTOR ELECTRONICS <OPTION> | 37 lbs | 320 btu |
| ③ | 1 | INJECTOR HEAD ON TABLE RAIL <OPTION> | 15 lbs | |
| ④ | 2 | LONGITUDINAL STATIONARY RAILS FOR LATERAL GANTRY INNOVA POSITIONER | 68 lbs | |
| ⑤ | 1 | COUNTERBALANCED EYE AND THYROID SHIELD WITH LAMP <OPTION> | 167 lbs | 150 btu |
| ⑥ | 1 | 18 in. MONITOR ON DESK <OPTION> | 17 lbs | 204 btu |
| ⑦ | 1 | 18 in. MONITOR ON WALL SUPPORT <OPTION> | 26 lbs | 204 btu |
| ⑧ | 1 | OPERATORS CONSOLE | 19 lbs | 399 btu |
| ⑨ | 1 | 3 KVA UPS CABINET | 37 lbs | 546 btu |
| ⑩ | 1 | 20 KVA UPS CABINET | 1170 lbs | 4720 btu |
| ⑪ | 1 | LC/LP CABINET <C2> | 1454 lbs | 4570 btu |
| ⑫ | 1 | LATERAL CABINET <C3> | 891 lbs | 2945 btu |
| ⑬ | 1 | AP FRONTAL CABINET <C1> | 1035 lbs | 4413 btu |
| ⑭ | 1 | AW WORKSTATION <OPTION FOR BIPLANE> | 81 lbs | 1201 btu |
| ⑮ | 1 | BOLUS CHASE HANDSWITCH <OPTION> | 2 lbs | |
| ⑯ | 1 | LATERAL WATER CHILLER | 447 lbs | 16320 btu |
| ⑰ | 1 | LATERAL DETECTOR CHILLER | 33 lbs | 709 btu |
| ⑱ | 1 | AP TUBE CHILLER | 447 lbs | 18730 btu |
| ⑲ | 1 | AP DETECTOR CHILLER | 33 lbs | 709 btu |
| ⑳ | 1 | EIGHT LCD MONITOR SUSPENSION ON 7 ft. 9 in. XT INBOARD BRIDGE | 630 lbs | 1638 btu |
| ㉑ | 1 | OMEGA IV/V TABLE WITH ROTATING TOP | 1300 lbs | 600 btu |
| ㉒ | 1 | LATERAL POSITIONER BRIDGE MOUNT ASSEMBLY MOUNTED FROM CEILING SUPPORTS | 1422 lbs | 4126 btu |
| ㉓ | 2 | LONGITUDINAL STATIONARY RAIL FOR LCD MONITOR SUSPENSION | 68 lbs | |
| ㉔ | 1 | INNOVA POSITIONER <REFERENCE TABLE BASE-PLATE DETAIL FOR FLOOR MOUNTING INFORMATION> | 1653 lbs | 2416 btu |
| ㉕ | 1 | IVUS VOLCANO <READY KIT> | | |
| ㉖ | 1 | JEDI GENERATOR CART | 50 lbs | |
| ⑤① | 1 | INNOVA MAIN DISCONNECT, REFERENCE JUNCTION POINT 'A' ON SHEET E1 FOR DETAILED DESCRIPTION. | 906 lbs | 2215 btu |

ENVIRONMENT

Ambient Operation Temperature: 55-75° (F)
 Allowable Temperature Change: 15° (F) per hour
 Humidity: 30%-70% non condensing
 Allowable Humidity Change: 10% per hour
 Max - Altitude: 8000 ft. above sea level

ROOM PLAN LOCATED ON PAGE 5-84

| ITEM | QUANTITY | ITEM DESCRIPTION |
|---|----------|--|
|  | | <p>***** CUSTOMER/CONTRACTOR SUPPLIED AND INSTALLED ITEMS *****</p> |
| 60 | | COUNTER TOP WITH SINK, BASE AND WALL CABINETS |
| 61 | | COUNTER TOP WITH BASE CABINETS |
| 62 | | COUNTER TOP FOR EQUIPMENT- SHELVING MAY BE REQUIRED PROVIDE GROMMETED OPENINGS AS REQUIRED TO ROUTE INTERCONNECT CABLES TO RACEWAY BELOW COUNTERTOP. |
| 63 | | CONTROL WALL TO CEILING WITH LEAD GLASS VIEWING WINDOW. |
| 64 | | CABLE DRAPE RAIL, CAT. NO. CPGE55 OR EQUIVALENT. CONTACT UNISTRUT WISCONSIN: 262-796-8710 |
| 65 | | X-RAY ON WARNING LIGHT - AVAILABLE FROM GE SUPPLY CALL: 800-200-9760 GE CAT. NO. WXIABWW-DF-XIU |
| 66 | | MINIMUM DOOR OPENING FOR EQUIPMENT DELIVERY IS 44 IN. W x 83 IN. H [1118mm x 2108mm], CONTINGENT ON A 96 IN. [2438mm] CORRIDOR WIDTH |
| 67 | | SLIDING EQUIPMENT ROOM DOORS |
| 68 | | CUSTOMER SUPPLIED STORAGE CABINET |
| 69 | | 150-AMP RATED DISCONNECT BREAKER (PDB1) (FOR LOCK-OUT/ TAG-OUT CAPABILITY) |
| 70 | | SHELF FOR EQUIPMENT |
| 90 | | X-RAY ROOM WARNING LIGHT/ROOM LIGHTING CONTROL PANEL REFERENCE JUNCTION POINT 'XRLC' ON SHEET 'E1' FOR DETAILED DESCRIPTION -CAT. NO. E4500AK FOR WARNING LIGHT & ROOM LIGHT CONTROL. |