

# 2013 Coding Guide

Medicare Coding and Payment for Radiopharmaceuticals  
Used in Nuclear Medicine Procedures



## Medicare Coding and Payment for Radiopharmaceuticals Used in Nuclear Medicine Procedures

### AdreView™ (Iobenguane I 123 Injection)

AdreView is a diagnostic radiopharmaceutical agent for gamma-scintigraphy. AdreView is indicated for the detection of primary or metastatic pheochromocytoma or neuroblastoma as an adjunct to other diagnostic tests.

| Medicare Codes and Payment Rates |   |                                |  |
|----------------------------------|---|--------------------------------|--|
| CPT®/ HCPCS Code                 | Description   | Hospital Outpatient Department | Physician Offices and Freestanding Imaging Centers |
| A9582                            | Iobenguane, I-123, diagnostic, per study dose, up to 15 millicuries | Packaged                       | 95% of AWP or carrier priced                       |

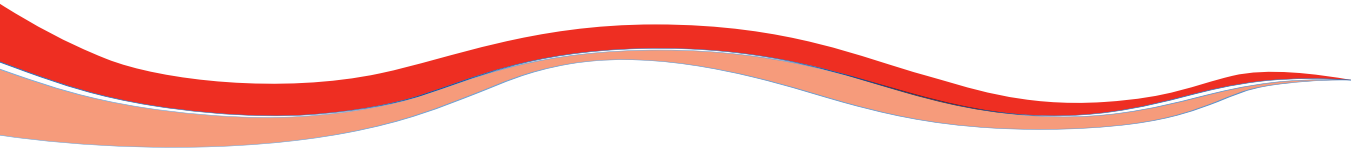
Private insurer and Medicaid payment rates may vary and different codes may be required.

### Coding and Payment Information

Under HOPPS, the Hospital Outpatient Prospective Payment System (HOPPS), Medicare will continue “packaging” payment for diagnostic radiopharmaceuticals into the payment for the associated procedure.

Diagnostic radiopharmaceuticals are separately payable in physician offices and freestanding imaging centers. Payment is based on 95% of the average wholesale price (AWP) or established by local Medicare contractors (carrier priced).

Physicians performing nuclear medicine procedures using diagnostic radiopharmaceuticals should report the appropriate HCPCS code for the product along with the appropriate CPT® code(s) for the procedure(s). Physicians should make sure the volume in millicuries of radiopharmaceutical reported is consistent with the volume in millicuries of radiopharmaceutical administered to the patient to complete the nuclear medicine imaging study.



The information referenced and provided is based upon coding experience and research of current general coding practices. The existence of codes does not guarantee coverage or payment for any procedure or contrast agent by any payer. The final decision for coding of any procedure must be made by the provider of care after considering the medical necessity of the services and supplies provided as well as the regulations and local, state, or federal laws that may apply. The coding and payment data are furnished for general informational purposes only and should not be relied upon for the purposes of determining payer coverage and coding for a specific case or claim for payment. Providers should refer to authoritative coding sources, such as the Common Procedural Terminology (CPT®) codes and Healthcare Common Procedure Coding System (HCPCS) codes.



imagination at work

**Customer Service: 800 292 8514**  
**Reimbursement Hotline: 800 767 6664**  
**[www.gehealthcare.com](http://www.gehealthcare.com)**

©2013 General Electric Company - All rights reserved.  
GE and the GE Monogram are trademarks of General Electric Company.  
AdreView is a trademark of GE Healthcare.

CPT is a registered trademark of the American Medical Association

February 2013 53-JB15104US

**GE Confidential**



## Important Risk and Safety Information about AdreView (Iobenguane I 123 Injection)

**INDICATIONS:** AdreView is a radiopharmaceutical indicated for use in the detection of primary or metastatic pheochromocytoma or neuroblastoma as an adjunct to other diagnostic tests. **CONTRAINDICATIONS:** AdreView is contraindicated in patients with known hypersensitivity to iobenguane or iobenguane sulfate. **WARNINGS AND PRECAUTIONS: Hypersensitivity Reactions:** Hypersensitivity reactions have been reported following AdreView administration. **Benzyl Alcohol Toxicity in Infants:** AdreView contains benzyl alcohol, which in excessive amounts has been associated with “Gaspings Syndrome” in premature / low birth-weight infants and rare reports of deaths, mostly in preterm infants. **Radiation Safety:** To minimize bladder radiation dose encourage hydration and frequent voiding. AdreView is cleared by glomerular filtration and is not dialyzable. Delayed clearance in patients with severe renal impairment may increase radiation dose and decrease image quality. **Thyroid Accumulation:** Administer thyroid-blocking medication before AdreView administration to block thyroid uptake of iodine 123, which may increase long-term risk for thyroid neoplasia. **Hypertension:** AdreView may increase release of norepinephrine from chromaffin granules producing transient hypertension. **ADVERSE REACTIONS:** Dizziness, rash, pruritus, flushing or injection site hemorrhage were reported in NDA clinical trials. Hypersensitivity reactions have uncommonly been reported during the postmarketing use of AdreView. **DRUG INTERACTIONS:** Antihypertensives, antidepressants, sympathomimetic amines and cocaine have the potential to decrease the uptake of norepinephrine and cause false negative imaging results. Before AdreView administration, discontinue (for at least 5 biological half-lives), as clinically tolerated drugs known or expected to reduce norepinephrine uptake. **USE IN SPECIFIC POPULATIONS: Pregnancy:** Radiopharmaceuticals have potential to cause fetal harm. It is not known whether AdreView can cause fetal harm when administered to a pregnant woman or can affect reproduction capacity. AdreView should be given to a pregnant woman only if clearly needed. **Nursing Mothers:** It is not known whether AdreView is excreted into human milk, however, iodine 123 is excreted into human milk. A decision should be made whether to interrupt nursing after administration of AdreView or not to administer AdreView. **Pediatric Use:** The safety and effectiveness of AdreView have been established in the age groups 1 month to 16 years, but not in patients below the age of 1 month. **Geriatric Use:** Clinical experience has not identified differences in responses between the elderly and younger patients. In general, dose selection for an elderly population should be cautious.

**Prior to AdreView administration, please read the Full Prescribing Information on following pages.**



# AdreView™ Iobenguane I 123 Injection

**HIGHLIGHTS OF PRESCRIBING INFORMATION**

These highlights do not include all the information needed to use AdreView safely and effectively. See full prescribing information for AdreView.

AdreView (Iobenguane I 123 Injection) for Intravenous Use  
Initial U.S. Approval: 2008

**INDICATIONS AND USAGE**

AdreView is a diagnostic radiopharmaceutical agent for gamma-scintigraphy. It is indicated for use in the detection of primary or metastatic pheochromocytoma or neuroblastoma as an adjunct to other diagnostic tests. (1)

**DOSAGE AND ADMINISTRATION**

- AdreView emits radiation and must be handled with appropriate safety measures. (2.1, 2.6)
- Administer thyroid blockade medications prior to AdreView. (2.2, 5.4)
- Measure patient dose by a suitable radioactivity calibration system immediately prior to administration. (2.4)
- For patients ≥ 16 years of age or < 16 years of age and ≥ 70 kg: administer 10 mCi (370 MBq). (2.4, 2.5)
- For patients < 16 years of age and < 70 kg: amount scaled to the adult reference activity based on weight. (2.5)

**DOSAGE FORMS AND STRENGTHS**

5 mL of sterile solution for intravenous injection in a single use vial (2 mCi/mL at calibration time). (3)

**CONTRAINDICATIONS**

Known hypersensitivity to Iobenguane or Iobenguane sulfate. (4)

**WARNINGS AND PRECAUTIONS**

- Hypersensitivity reactions have followed AdreView administration. Have anaphylactic and hypersensitivity treatment measures available prior to AdreView administration. (5.1)
- AdreView contains benzyl alcohol (10.3 mg/mL) which may cause serious reactions in premature or low birth-weight infants. (5.2)
- Patients with severe renal impairment may have increased radiation exposure and decreased quality of AdreView images. (5.3)
- Failure to block thyroid iodine uptake may result in Iodine 123 accumulation in the thyroid. (5.4)
- Drugs which block norepinephrine uptake or deplete norepinephrine stores may decrease AdreView uptake in neuroendocrine tumors. When medically feasible, stop these drugs before AdreView administration and monitor patients for withdrawal signs and symptoms. (5.5)

**ADVERSE REACTIONS**

Serious hypersensitivity reactions have been reported following AdreView administration. The most common adverse reactions, dizziness, rash, pruritis, flushing and injection site hemorrhage occurred in < 1% of patients. (6.1, 6.2)

To report SUSPECTED ADVERSE REACTIONS, contact GE Healthcare at 1-800-654-0118 or FDA at 1-800-FDA-1088 or www.fda.gov/medwatch.

**DRUG INTERACTIONS**

Amitriptyline and derivatives, imipramine and derivatives, other antidepressants that inhibit norepinephrine transporter, antihypertensives that deplete norepinephrine stores or inhibit reuptake, sympathomimetic amines and cocaine: Discontinue for 5 biological half-lives prior to AdreView administration. (7)

**USE IN SPECIFIC POPULATIONS**

- Pregnancy: any radiopharmaceutical, including AdreView, may cause fetal harm. (8.1)
- Nursing mothers: A decision should be made whether to interrupt nursing after AdreView administration or not to administer AdreView, taking into account the importance of the drug to the mother. (8.3)
- Pediatrics: safety and effectiveness have not been established in pediatric patients < 1 month of age. (8.4)

See 17 for PATIENT COUNSELING INFORMATION.

Revised: 05/2011

**FULL PRESCRIBING INFORMATION: CONTENTS\***

- 1 INDICATIONS AND USAGE
- 2 DOSAGE AND ADMINISTRATION
  - 2.1 Radiation Safety
  - 2.2 Thyroid Blockade
  - 2.3 Preparation and Administration
  - 2.4 Recommended Dose for Adults
  - 2.5 Recommended Dose for Pediatric Patients
  - 2.6 Radiation Dosimetry
  - 2.7 Imaging Guidelines
- 3 DOSAGE FORMS AND STRENGTHS
- 4 CONTRAINDICATIONS
- 5 WARNINGS AND PRECAUTIONS
  - 5.1 Hypersensitivity Reactions
  - 5.2 Risks for Benzyl Alcohol Toxicity in Infants
  - 5.3 Increased Radiation Exposure in Patients with Severe Renal Impairment
  - 5.4 Thyroid Accumulation
  - 5.5 Risks with Concomitant Medication Withdrawal
  - 5.6 Hypertension
- 6 ADVERSE REACTIONS
  - 6.1 Clinical Study Experience
  - 6.2 Postmarketing Experience
- 7 DRUG INTERACTIONS
- 8 USE IN SPECIFIC POPULATIONS
  - 8.1 Pregnancy
  - 8.3 Nursing Mothers
  - 8.4 Pediatric Use
  - 8.5 Geriatric Use

- 10 OVERDOSAGE
- 11 DESCRIPTION
  - 11.1 Physical Characteristics
  - 11.2 External Radiation
- 12 CLINICAL PHARMACOLOGY
  - 12.1 Mechanism of Action
  - 12.2 Pharmacodynamics
  - 12.3 Pharmacokinetics
- 13 NONCLINICAL TOXICOLOGY
  - 13.1 Carcinogenesis, Mutagenesis, Impairment of Fertility
  - 13.2 Animal Toxicology and/or Pharmacology
- 14 CLINICAL STUDIES
  - 14.1 Pheochromocytomas and neuroblastomas
- 16 HOW SUPPLIED/STORAGE AND HANDLING
- 17 PATIENT COUNSELING INFORMATION

\*Sections or subsections omitted from the full prescribing information are not listed.

**FULL PRESCRIBING INFORMATION**

**1 INDICATIONS AND USAGE**

AdreView is a radiopharmaceutical indicated for use in the detection of primary or metastatic pheochromocytoma or neuroblastoma as an adjunct to other diagnostic tests.

**2 DOSAGE AND ADMINISTRATION**

**2.1 Radiation Safety**

AdreView emits radiation and must be handled with appropriate safety measures to minimize radiation exposure to clinical personnel and patients. Radiopharmaceuticals should be used by or under the control of physicians who are qualified by specific training and experience in the safe use and handling of radionuclides, and whose experience and training have been approved by the appropriate government agency authorized to license the use of radionuclides. AdreView dosing is based upon the radioactivity determined using a suitable calibration system immediately prior to administration.

To minimize radiation dose to the bladder, prior to and following AdreView administration, encourage hydration to permit frequent voiding. Encourage the patient to void frequently for the first 48 hours following AdreView administration [see *Clinical Pharmacology* (12.2)].

**2.2 Thyroid Blockade**

Before administration of AdreView, administer Potassium Iodide Oral Solution or Lugol's Solution (equivalent to 100 mg iodide for adults, body-weight adjusted for children) or potassium perchlorate (400 mg for adults, body-weight adjusted for children) to block uptake of iodine 123 by the patient's thyroid. Administer the blocking agent at least one hour before the dose of AdreView [see *Warnings and Precautions* (5.4)].

**2.3 Preparation and Administration**

Inspect the AdreView vial for particulate matter and discoloration prior to administration. Use aseptic procedures and a radiation shielding syringe during administration. Administer the dose as an intravenous injection over 1 to 2 minutes. A subsequent injection of 0.9% sodium chloride may be used to ensure full delivery of the dose.

**2.4 Recommended Dose for Adults**

For adults (≥ 16 years of age), the recommended dose is 10 mCi (370 MBq) [see *Clinical Studies* (14.1)].

**2.5 Recommended Dose for Pediatric Patients**

For pediatric patients < 16 years of age weighing ≥ 70 kg, the recommended dose is 10 mCi (370 MBq) [see *Clinical Studies* (14.1)].

For pediatric patients < 16 years of age weighing < 70 kg, the recommended dose should be calculated according to patient body weight as shown in Table 1 [see *Clinical Studies* (14.1)]. The benzyl alcohol in AdreView may cause serious adverse reactions in premature or low birth-weight infants [see *Warnings and Precautions* (5.2)].

**Table 1  
AdreView Dose Preparation for Pediatric Patients\***

| Weight (kg) | Fraction of adult activity | AdreView (mCi) pediatric dose | AdreView (MBq) pediatric dose |
|-------------|----------------------------|-------------------------------|-------------------------------|
| 3           | 0.1                        | 1                             | 37                            |
| 4           | 0.14                       | 1.4                           | 52                            |
| 6           | 0.19                       | 1.9                           | 70                            |
| 8           | 0.23                       | 2.3                           | 85.1                          |
| 10          | 0.27                       | 2.7                           | 99.9                          |
| 12          | 0.32                       | 3.2                           | 118.4                         |
| 14          | 0.36                       | 3.6                           | 133.2                         |
| 16          | 0.4                        | 4                             | 148                           |
| 18          | 0.44                       | 4.4                           | 162.8                         |
| 20          | 0.46                       | 4.6                           | 170.2                         |
| 22          | 0.5                        | 5                             | 185                           |
| 24          | 0.53                       | 5.3                           | 196.1                         |
| 26          | 0.56                       | 5.6                           | 207.2                         |
| 28          | 0.58                       | 5.8                           | 214.6                         |
| 30          | 0.62                       | 6.2                           | 229.4                         |
| 32          | 0.65                       | 6.5                           | 240.5                         |
| 34          | 0.68                       | 6.8                           | 251.6                         |
| 36          | 0.71                       | 7.1                           | 262.7                         |
| 38          | 0.73                       | 7.3                           | 270.1                         |
| 40          | 0.76                       | 7.6                           | 281.2                         |
| 42          | 0.78                       | 7.8                           | 288.6                         |
| 44          | 0.8                        | 8                             | 296                           |
| 46          | 0.82                       | 8.2                           | 303.4                         |
| 48          | 0.85                       | 8.5                           | 314.5                         |
| 50          | 0.88                       | 8.8                           | 325.6                         |
| 52          | 0.9                        | 9                             | 333                           |
| 54          | 0.9                        | 9                             | 333                           |
| 56          | 0.92                       | 9.2                           | 340.4                         |
| 58          | 0.92                       | 9.2                           | 340.4                         |
| 60          | 0.96                       | 9.6                           | 355.2                         |
| 62          | 0.96                       | 9.6                           | 355.2                         |
| 64          | 0.98                       | 9.8                           | 362.6                         |
| 66          | 0.98                       | 9.8                           | 362.6                         |
| 68          | 0.99                       | 9.9                           | 366.3                         |

\*Based on a reference activity for an adult scaled to body weight according to the schedule proposed by the European Association of Nuclear Medicine Paediatric Task Group.

## 2.6 Radiation Dosimetry

The estimated absorbed radiation doses to adults and children from intravenous administration of AdreView are as shown in Table 2:

**Table 2**  
**Estimated Absorbed Radiation Dose from AdreView**

| ORGAN / TISSUE       |                            | ABSORBED DOSE PER UNIT ADMINISTERED ACTIVITY |         |             |         |             |         |            |         |            |         |          |         |
|----------------------|----------------------------|--|---------|-------------|---------|-------------|---------|------------|---------|------------|---------|----------|---------|
|                      |                            | ADULT  |         | 15-YEAR OLD |         | 10-YEAR OLD |         | 5-YEAR OLD |         | 1-YEAR OLD |         | NEONATES |         |
|                      |                            | μGy/MBq                                      | rad/mCi | μGy/MBq     | rad/mCi | μGy/MBq     | rad/mCi | μGy/MBq    | rad/mCi | μGy/MBq    | rad/mCi | μGy/MBq  | rad/mCi |
| Adrenals             |                            | 16   | 0.059   | 21          | 0.078   | 31          | 0.115   | 42         | 0.155   | 67         | 0.248   | 111      | 0.411   |
| Brain                |                            | 3.9  | 0.014   | 4.9         | 0.018   | 8.1         | 0.030   | 13         | 0.048   | 24         | 0.089   | 55.9     | 0.207   |
| Breast               |                            | 4.7  | 0.017   | 5.9         | 0.022   | 9.4         | 0.035   | 15         | 0.056   | 28         | 0.104   | 65.3     | 0.242   |
| Gallbladder          |                            | 20   | 0.074   | 24          | 0.089   | 34          | 0.126   | 51         | 0.189   | 95         | 0.352   | 200      | 0.740   |
| GI Tract             | Stomach Wall               | 7.6  | 0.028   | 10          | 0.037   | 17          | 0.063   | 27         | 0.100   | 51         | 0.189   | 114      | 0.422   |
|                      | Small Intestine Wall       | 7.7  | 0.028   | 9.8         | 0.036   | 16          | 0.059   | 25         | 0.093   | 46         | 0.170   | 104      | 0.385   |
|                      | Colon Wall                 | 8.1  | 0.030   | 10          | 0.037   | 16          | 0.059   | 26         | 0.096   | 46         | 0.170   | 104.3    | 0.386   |
|                      | Upper Large Intestine Wall | 8.4  | 0.031   | 11          | 0.041   | 18          | 0.067   | 30         | 0.111   | 53         | 0.196   | 119      | 0.440   |
|                      | Lower Large Intestine Wall | 7.7  | 0.028   | 9.6         | 0.036   | 15          | 0.056   | 21         | 0.078   | 38         | 0.141   | 84.9     | 0.314   |
| Heart Wall           |                            | 18   | 0.067   | 23          | 0.085   | 35          | 0.130   | 53         | 0.196   | 94         | 0.348   | 182      | 0.673   |
| Kidneys              |                            | 13   | 0.048   | 16          | 0.059   | 24          | 0.089   | 35         | 0.130   | 59         | 0.218   | 132      | 0.488   |
| Liver                |                            | 67   | 0.248   | 87          | 0.322   | 130         | 0.481   | 180        | 0.666   | 330        | 1.221   | 720      | 2.664   |
| Lungs                |                            | 16   | 0.059   | 23          | 0.085   | 32          | 0.118   | 48         | 0.178   | 89         | 0.329   | 215      | 0.796   |
| Muscles              |                            | 6  | 0.022   | 7.6         | 0.028   | 12          | 0.044   | 17         | 0.063   | 33         | 0.122   | 75.1     | 0.278   |
| Esophagus            |                            | 6  | 0.022   | 7.6         | 0.028   | 11          | 0.041   | 18         | 0.067   | 32         | 0.118   | 72.2     | 0.267   |
| Osteogenic Cells     |                            | 16   | 0.059   | 21          | 0.078   | 31          | 0.115   | 47         | 0.174   | 100        | 0.370   | 254      | 0.940   |
| Ovaries              |                            | 7.9  | 0.029   | 10          | 0.037   | 15          | 0.056   | 22         | 0.081   | 41         | 0.152   | 92.3     | 0.342   |
| Pancreas             |                            | 12   | 0.044   | 15          | 0.056   | 25          | 0.093   | 39         | 0.144   | 68         | 0.252   | 143      | 0.529   |
| Red marrow           |                            | 5.6  | 0.021   | 6.8         | 0.025   | 10          | 0.037   | 15         | 0.056   | 30         | 0.111   | 89.5     | 0.331   |
| Skin                 |                            | 3.7  | 0.014   | 4.4         | 0.016   | 7.1         | 0.026   | 11         | 0.041   | 21         | 0.078   | 53.1     | 0.196   |
| Spleen               |                            | 20   | 0.074   | 27          | 0.100   | 42          | 0.155   | 64         | 0.237   | 110        | 0.407   | 282      | 1.043   |
| Testes               |                            | 5.4  | 0.020   | 7.1         | 0.026   | 11          | 0.041   | 16         | 0.059   | 30         | 0.111   | 69.9     | 0.259   |
| Thymus               |                            | 6  | 0.022   | 7.6         | 0.028   | 11          | 0.041   | 18         | 0.067   | 32         | 0.118   | 72.2     | 0.267   |
| Thyroid              |                            | 4.7  | 0.017   | 6.1         | 0.023   | 9.9         | 0.037   | 16         | 0.059   | 30         | 0.111   | 69.4     | 0.257   |
| Urinary Bladder Wall |                            | 66   | 0.244   | 84          | 0.311   | 110         | 0.407   | 110        | 0.407   | 200        | 0.740   | 478.0    | 1.769   |
| Uterus               |                            | 11   | 0.041   | 14          | 0.052   | 21          | 0.078   | 28         | 0.104   | 51         | 0.189   | 110.0    | 0.407   |
| Whole Body           |                            | 8.1  | 0.030   | 10          | 0.037   | 16          | 0.059   | 24         | 0.089   | 44         | 0.163   | 104.0    | 0.385   |
| EFFECTIVE DOSE       | μSv/MBq                    | 13.7   |         | 18.1        |         | 26.7        |         | 37.6       |         | 68         |         | 162      |         |
|                      | mSv/mCi                    | 0.507  |         | 0.670       |         | 0.988       |         | 1.39       |         | 2.52       |         | 6        |         |

\*OLINDA/EXM calculation based on biodistribution data from Swanson et al. and Publication 53 of the ICRP (International Commission on Radiological Protection) [Annals of the ICRP 1987; 18 (1-4): 329-331]

The effective dose resulting from an administered activity amount of 10 mCi is 5.07 mSv in an adult.

## 2.7 Imaging Guidelines

Begin whole body planar scintigraphy imaging 24 ± 6 hours following administration of AdreView. Single photon emission computed tomography (SPECT) may be performed following planar scintigraphy, as appropriate [see *Clinical studies* 14.1].

## 3 DOSAGE FORMS AND STRENGTHS

Single use vials containing 5 mL solution for intravenous injection (2 mCi/mL at calibration time).

## 4 CONTRAINDICATIONS

AdreView is contraindicated in patients with known hypersensitivity to iobenguane or iobenguane sulfate.

## 5 WARNINGS AND PRECAUTIONS

### 5.1 Hypersensitivity Reactions

Hypersensitivity reactions have been reported following AdreView administration. Prior to administration, question the patient for a history of prior reactions to iodine, an iodine-containing contrast agent or other products containing iodine. If the patient is known or strongly suspected to have hypersensitivity to iodine, an iodine-containing contrast agent or other products containing iodine, the decision to administer AdreView should be based upon an assessment of the expected benefits compared to the potential hypersensitivity risks. Have anaphylactic and hypersensitivity treatment measures available prior to AdreView administration [see *Adverse Reactions* (6.2)].

### 5.2 Risks for Benzyl Alcohol Toxicity in Infants

AdreView contains benzyl alcohol at a concentration of 10.3 mg/mL. Benzyl alcohol has been associated with a fatal "Gasp Syndrome" in premature infants and infants of low birth weight. Exposure to excessive amounts of benzyl alcohol has been associated with toxicity (hypotension, metabolic acidosis), particularly in neonates, and an increased incidence of kernicterus, particularly in small preterm infants. There have been rare reports of deaths, primarily in preterm infants, associated with exposure to excessive amounts of benzyl alcohol [see *Description* (1.1)].

Observe infants for signs or symptoms of benzyl alcohol toxicity following AdreView administration. AdreView safety and effectiveness have not been established in neonates (pediatric patients below the age of 1 month).

### 5.3 Increased Radiation Exposure in Patients with Severe Renal Impairment

AdreView is cleared by glomerular filtration and is not dialyzable. The radiation dose to patients with severe renal impairment may be increased due to the delayed elimination of the drug. Delayed AdreView clearance may also reduce the target to background ratios and decrease the quality of scintigraphic images. These risks importantly may limit the role of AdreView in the diagnostic evaluation of patients with severe renal impairment. AdreView safety and efficacy have not been established in these patients [see *Clinical Pharmacology* (12.2)].

### 5.4 Thyroid Accumulation

Failure to block thyroid uptake of iodine 123 may result in an increased long term risk for thyroid neoplasia. Administer thyroid blocking medications before AdreView administration [see *Dosage and Administration* (2.2)].

### 5.5 Risks with Concomitant Medication Withdrawal

Drugs which interfere with norepinephrine uptake or retention may decrease the uptake of AdreView in neuroendocrine tumors and lead to false negative imaging results. When medically feasible, stop these drugs before AdreView administration and monitor patients for the occurrence of clinically significant withdrawal symptoms, especially patients with elevated levels of circulating catecholamines and their metabolites [see *Drug Interactions* (7)].

### 5.6 Hypertension

Assess the patient's pulse and blood pressure before and intermittently for 30 minutes after AdreView administration. AdreView may increase release of norepinephrine from chromaffin granules and produce a transient episode of hypertension, although this was not observed in the clinical study. Prior to AdreView administration, ensure emergency cardiac and anti-hypertensive treatments are readily available.



## 6 ADVERSE REACTIONS

### 6.1 Clinical Study Experience

Serious adverse reactions were not observed in the AdreView clinical study. The data described below reflect AdreView exposure to 251 patients with known or suspected pheochromocytoma or neuroblastoma. The average ages were 49 years (range 17 - 88 years) for adults and, for pediatric patients, 4 years (range 1 month - 16 years). Slightly less than half the patients were male. All patients were monitored for adverse reactions over a 24 hour period following AdreView administration.

Because clinical trials are conducted under widely varying conditions, adverse reaction rates observed in the clinical trials of a drug cannot be directly compared to rates in the clinical trials of another drug and may not reflect the rates observed in practice.

Adverse reactions were all mild to moderate in severity and were predominantly isolated occurrences ( $\leq 2$  patients) of one of the following reactions: dizziness, rash, pruritus, flushing or injection site hemorrhage.

### 6.2 Postmarketing Experience

Because postmarketing reactions are reported voluntarily from a population of uncertain size, it is not always possible to reliably estimate their frequency or establish a causal relationship to drug exposure.

Hypersensitivity reactions have uncommonly been reported during the postmarketing use of AdreView [see *Warnings and Precautions* (5.1)].

## 7 DRUG INTERACTIONS

The following drugs have the potential to decrease the uptake of norepinephrine and cause false negative imaging results: antihypertensives that deplete norepinephrine stores or inhibit reuptake (e.g., reserpine, labetalol), antidepressants that inhibit norepinephrine transporter function (e.g., amitriptyline and derivatives, imipramine and derivatives, selective serotonin reuptake inhibitors), sympathomimetic amines (e.g., phenylephrine, phenylpropranolamine, pseudoephedrine and ephedrine), and cocaine. Clinical studies have not determined which specific drugs may cause false negative imaging results nor whether all drugs in any specific pharmacologic class have the same potential to produce the negative imaging results. Increasing the dose of AdreView will not overcome any potential uptake limiting effect of these drugs. Before AdreView administration, discontinue (for at least 5 biological half-lives) drugs known or expected to reduce norepinephrine uptake, as clinically tolerated.

## 8 USE IN SPECIFIC POPULATIONS

### 8.1 Pregnancy

Pregnancy Category C: Any radiopharmaceutical, including AdreView, has a potential to cause fetal harm. It is not known whether AdreView can cause fetal harm when administered to a pregnant woman or can affect reproduction capacity. Animal reproduction studies have not been conducted with AdreView. AdreView should be given to a pregnant woman only if clearly needed.

### 8.3 Nursing Mothers

It is not known whether AdreView is excreted into human milk. However, iodine 123 is excreted into human milk. Because many drugs are excreted into human milk and because of the potential for serious adverse reactions in nursing infants, a decision should be made whether to interrupt nursing after administration of AdreView or not to administer AdreView, taking into account the importance of the drug to the mother. Based on the physical half-life of iodine 123 (13.2 hours) nursing women may consider interrupting nursing for 6 days after AdreView administration in order to minimize risks to nursing infants.

### 8.4 Pediatric Use

The safety and effectiveness of AdreView have been established in the age groups 1 month to 16 years [see *Clinical Studies* (14.1)]. Safety and effectiveness in pediatric patients below the age of 1 month have not been established [see *Warnings and Precautions* (5.2)].

### 8.5 Geriatric Use

The AdreView clinical study did not include sufficient numbers of subjects aged 65 and over to determine whether they respond differently from younger subjects. Other reported clinical experience has not identified differences in responses between the elderly and younger patients. In general, dose selection for an elderly population should be cautious, usually starting at the low end of the dosing range, reflecting the greater frequency of decreased hepatic, renal or cardiac function, and of concomitant disease or other drug therapy.

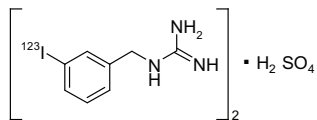
AdreView is excreted by the kidneys, and the risks of adverse reactions, increased radiation dose, and occurrence of falsely negative imaging results may be greater in patients with severely impaired renal function. Because elderly patients are more likely to have decreased renal function, care should be taken in dose selection and image interpretation. Consider assessment of renal function in elderly patients prior to AdreView administration.

## 10 OVERDOSAGE

The major manifestations of overdose relate predominantly to increased radiation exposure, with the long term risks for neoplasia.

## 11 DESCRIPTION

AdreView (Iobenguane I 123 Injection) is a sterile, pyrogen-free radiopharmaceutical for intravenous injection. Each mL contains 0.08 mg Iobenguane sulfate, 74 MBq (2 mCi) of I 123 (as Iobenguane sulfate I 123) at calibration date and time on the label, 23 mg sodium dihydrogen phosphate dihydrate, 2.8 mg disodium hydrogen phosphate dihydrate and 10.3 mg (1% v/v) benzyl alcohol with a pH of 5.0 - 6.5. Iobenguane sulfate I 123 is also known as I 123 meta-iodobenzylguanidine sulfate and has the following structural formula:



### 11.1 Physical Characteristics

Iodine 123 is a cyclotron-produced radionuclide that decays to Te 123 by electron capture and has a physical half-life of 13.2 hours.

Table 3

Principal Radiation Emission Data – Iodine 123

| Radiation | Energy Level (keV) | Abundance (%) |
|-----------|--------------------|---------------|
| Gamma     | 159                | 83            |

### 11.2 External Radiation

The specific gamma ray constant for iodine 123 is 1.6 R/mCi-hr at 1 cm. The first half value thickness of lead (Pb) for I 123 is 0.04 cm. The relative transmission of radiation emitted by the radionuclide that results from interposition of various thicknesses of Pb is shown in Table 4 (e.g., the use of 2.16 cm Pb will decrease the external radiation exposure by a factor of about 1,000).

Table 4

Reduction in In-air Collision Kerma Caused by Lead Shielding\*

| Shield Thickness<br>cm of lead (Pb) | Reduction in In-air<br>Collision Kerma |
|-------------------------------------|--|
| 0.04                                | 0.5                                    |
| 0.13                                | 10 <sup>-1</sup>                       |
| 0.77                                | 10 <sup>-2</sup>                       |
| 2.16                                | 10 <sup>-3</sup>                       |
| 3.67                                | 10 <sup>-4</sup>                       |

\*Calculation based on attenuation and energy-transfer coefficients obtained from National Institute of Standards & Technology Report NISTIR 5632.

## 12 CLINICAL PHARMACOLOGY

### 12.1 Mechanism of Action

Iobenguane is similar in structure to the antihypertensive drug guanethidine and to the neurotransmitter norepinephrine (NE). Iobenguane is, therefore, largely subject to the same uptake and accumulation pathways as NE. Iobenguane is taken up by the NE transporter in adrenergic nerve terminals and stored in the presynaptic storage vesicles. Iobenguane accumulates in adrenergically innervated tissues such as the adrenal medulla, salivary glands, heart, liver, spleen and lungs as well as tumors derived from the neural crest. By labeling Iobenguane with the isotope iodine 123, it is possible to obtain scintigraphic images of the organs and tissues in which the radiopharmaceutical accumulates.

### 12.2 Pharmacodynamics

AdreView is a diagnostic radiopharmaceutical which contains a small quantity of Iobenguane that is not expected to produce a pharmacodynamic effect [see *Description* (11)]. To minimize radiation dose to the thyroid gland, this organ should be blocked before dosing [see *Dosage and Administration* (2.1)]. Since Iobenguane is excreted mainly via the kidneys, patients with severe renal insufficiency may experience increased radiation exposure and impaired imaging results. Frequent voiding should be encouraged after administration to minimize the radiation dose to the bladder [see *Warnings and Precautions* (5.3)]. The calculation of the estimated radiation dose is shown in Table 2 [see *Dosage and Administration* (2.5)].

### 12.3 Pharmacokinetics

Iobenguane is rapidly cleared from the blood and accumulates in adrenergically innervated tissues [see *Clinical Pharmacology* (12.1)]. Retention is especially prolonged in highly adrenergically innervated tissues (e.g., the adrenal medulla, heart, and salivary glands).

The majority of the Iobenguane dose is excreted unaltered by the kidneys via glomerular filtration. A rapid initial clearance of circulating Iobenguane is observed, followed by a slow clearance as Iobenguane is released from other compartments. In patients with normal renal function, 70 to 90% of the administered dose is recovered unaltered in urine within 4 days. Iobenguane is not cleared by dialysis [see *Warnings and Precautions* (5.3)]. Most of the remaining radioactivity recovered in the urine is in the form of the radioiodinated metabolite m-iodohippuric acid (MIHA) (typically  $\leq 10\%$ ) and free radioiodide (typically  $\leq 6\%$ ). The enzymatic process responsible for metabolism has not been well characterized and the pharmacologic activity of these metabolites has not been studied. Only a small amount (< 1%) of the injected dose is eliminated via the feces.

## 13 NONCLINICAL TOXICOLOGY

### 13.1 Carcinogenesis, Mutagenesis, Impairment of Fertility

Iobenguane hemisulfate was not mutagenic *in vitro* in the Ames bacterial mutation assay and in the *in vitro* mouse lymphoma test, and was negative in the *in vivo* micronucleus test in rats. Long-term animal studies have not been conducted to evaluate AdreView's carcinogenic potential or potential effects on fertility.

### 13.2 Animal Toxicology and/or Pharmacology

Iobenguane sulfate testing in dogs revealed electrocardiographic (ECG) changes after administration of 202 times the mg/m<sup>2</sup> conversion of the maximum human dose for a 60 kg adult; the no observable effect level (NOEL) was not determined. When Iobenguane was tested in a cell system stably expressing hERG-1 potassium channels, inhibition of potassium channels was not observed at an 80  $\mu\text{M}$  Iobenguane concentration and the IC<sub>50</sub> was 487  $\mu\text{M}$ .

## 14 CLINICAL STUDIES

### 14.1 Pheochromocytomas and Neuroblastomas

The safety and efficacy of AdreView were assessed in an open-label, multicenter, multinational trial of 251 subjects with known or suspected neuroblastoma or pheochromocytoma. Diagnostic efficacy for the detection of metabolically active neuroblastoma or pheochromocytoma was determined by comparison of focal increased radionuclide uptake on planar scintigraphy at 24  $\pm$  6 hours post-administration of AdreView against the definitive diagnosis (standard of truth). Anterior and posterior planar whole-body images, or alternatively whole-body overlapping spot images, were acquired from the head to below the knees. Additional spot images were performed as deemed appropriate at the discretion of the clinical image reviewer. SPECT imaging of the thorax and abdomen was then obtained when possible.

Of the 251 subjects dosed with AdreView, 100 had known or suspected neuroblastoma and 151 had known or suspected pheochromocytoma. The population included 154 adults and 97 pediatric patients; the majority of adults were female (59%), the majority of pediatric subjects were male (58%). The adult subjects had a mean age of 49 years (range 17 to 88 years). The pediatric patients (56 males and 41 females) consisted of 32 infants (1 month up to 2 years of age), 62 children (2 years up to 12 years) and three adolescents (12 years up to 16 years).

The definitive diagnosis (standard of truth) for the presence or absence of metabolically active pheochromocytoma or neuroblastoma was determined by histopathology or, when histopathology was unavailable, a composite of imaging (i.e., CT, MRI, [<sup>123</sup>I]-mIBG scintigraphy), plasma/urine catecholamine and/or catecholamine metabolite measurements, and clinical follow-up.

A standard of truth was available for 211 subjects (127 with pheochromocytoma, 84 with neuroblastoma) and this group comprised the diagnostic efficacy population. For 93 of these subjects, the standard of truth was based solely upon histopathology. Of 211 subjects in the efficacy population, all had planar scintigraphy and 167 subjects had SPECT in addition to planar imaging. All images were assessed independently by three readers blinded to all clinical data. Table 5 summarizes the AdreView performance characteristics, by reader.

**Table 5. AdreView Planar Imaging: Sensitivity and Specificity**

| Outcome                      | Reader A    | Reader B    | Reader C    |
|------------------------------|-------------|-------------|-------------|
| <b>Sensitivity (n = 159)</b> |             |             |             |
| Point estimate               | 0.80        | 0.77        | 0.79        |
| 95% confidence interval      | 0.73 - 0.86 | 0.70 - 0.84 | 0.71 - 0.85 |
| <b>Specificity (n = 52)</b>  |             |             |             |
| Point estimate               | 0.77        | 0.73        | 0.69        |
| 95% confidence interval      | 0.63 - 0.87 | 0.59 - 0.84 | 0.55 - 0.81 |

Performance characteristics (sensitivity and specificity) of AdreView planar imaging in patients with known or suspected neuroblastoma were similar to those in patients with known or suspected pheochromocytoma. Among the selected patients who also underwent SPECT imaging, similar performance characteristics of AdreView scintigraphy were observed when SPECT plus planar imaging was compared to planar imaging alone.

**16 HOW SUPPLIED/STORAGE AND HANDLING**

AdreView is supplied in 10 mL glass vials containing a total volume of 5 mL of solution with a total radioactivity of 370 MBq (10 mCi) at calibration time. Each vial is enclosed in a lead container of appropriate thickness.

**NDC 17156-235-01**

**Storage**

Store AdreView at 20°-25°C (68°-77°F); excursions permitted to 15°-30°C (59°-86°F) [see USP]. This product does not contain a preservative. Store within the original lead container or equivalent radiation shielding.

In accordance with USP recommendations I 123 Injection preparations should not be used after the expiration date and time stated on the label.

**Handling**

This preparation is approved for use by persons licensed by the Illinois Emergency Management Agency pursuant to 32 Ill. Adm. Code Section 330.260(a) and 335.4010 or equivalent licenses of the Nuclear Regulatory Commission or an Agreement State.

**17 PATIENT COUNSELING INFORMATION**

Instruct patients to inform their physician or healthcare provider if they:

1. are pregnant or breast feeding.
2. are sensitive to iodine, an iodine-containing contrast agent or other products that contain iodine.
3. are sensitive to Potassium Iodide Oral Solution, or Lugol's Solution.
4. have reduced renal function.

Instruct patients to increase their level of hydration prior to receiving AdreView and to void frequently for the first 48 hours following AdreView administration.

GE Healthcare



Manufactured and Distributed by  
**GE Healthcare**, Medi-Physics, Inc.  
 Arlington Heights, IL 60004 U.S.A.

AdreView is a trademark of GE Healthcare.

GE and the GE Monogram are trademarks of  
 General Electric Company.

©2011 General Electric Company – All rights reserved.