



GE HealthCare

Vscan AirTM SL

Sector-phased array and
linear array dual-probe

See more. Treat faster.



Freedom and flexibility

Vscan Air SL sets a new standard in handheld ultrasound—a flexible, wireless dual-probe with sector and linear transducers that deliver crystal clear images anytime, anywhere.* Designed for the individual, it's always with you—ultra-portable, cordless, customizable, and intuitive. Small and lightweight, Vscan Air goes with you to every patient.

Insight right in your pocket

Accelerate diagnoses and treatment decisions with wireless whole-body scanning to support rapid cardiac and vascular assessments. Vscan Air SL connects to the Vscan Air app with both Android™ and iOS™ devices.

Designed around you

Seamlessly integrate Vscan Air into your daily practice. Our ultra-portable innovations are driven by feedback from clinicians to ensure they're easy to use and intuitive to navigate.

2-in-1 power

Vscan Air SL offers a dual probe so you can complete deep and shallow scans with one handheld device without compromising on image quality.

Vscan Air SL consists of a dual-headed probe with both sector phased array and linear array transducer.

Durability, guaranteed

Waterproof, military standard drop-tested, flight-ready, ambulance-capable and backed by a three-year warranty. We also back you with local, reliable service and support, education tools and online resources.



Designed around you. Built for your needs.

Take Vscan Air SL anywhere* with wireless freedom and maximum portability. Its sector transducer is ideal for rapid cardiac assessments. With Vscan Air, the opposite side of the probe has a linear array, so that you won't miss a beat when moving from a cardiac to a vascular assessment. No need to go looking for your ultrasound—it's right in your pocket.



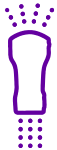
Human-focused design helps keep things simple with one-swipe/tap controls, simple user interface and intuitive design.



Flexible wireless experience includes wireless device connectivity and data sharing to your DICOM® Network server or shared folders. Seamlessly send your image queue during the exam or once connected to your network.



Easily share anonymous exam images or loops to other apps, including your social feed, with just a few taps in the Vscan Air app.



Seamlessly monitors electronics and transducer elements to ensure the device is fully operational even after a drop.



Start scanning faster with smart connect pairing, which keeps your probe connected to your display device while charging.



OB measurements and worksheet include capabilities for fetal size measurements, amniotic fluid check, angle of progression and estimated fetal weight.



World-class cybersecurity includes auto-delete of images after export to protect patient information and two-point encryption to keep your data secure.



Intuitive measurement tools to get the quick measurements you need at the point of care—wherever that may be.



Streamline your workflow by annotating images right on your display device.



Built for both new and experienced ultrasound users with basic and advanced assessments in mind.



B-mode



Color Doppler



Pulsed Wave Doppler

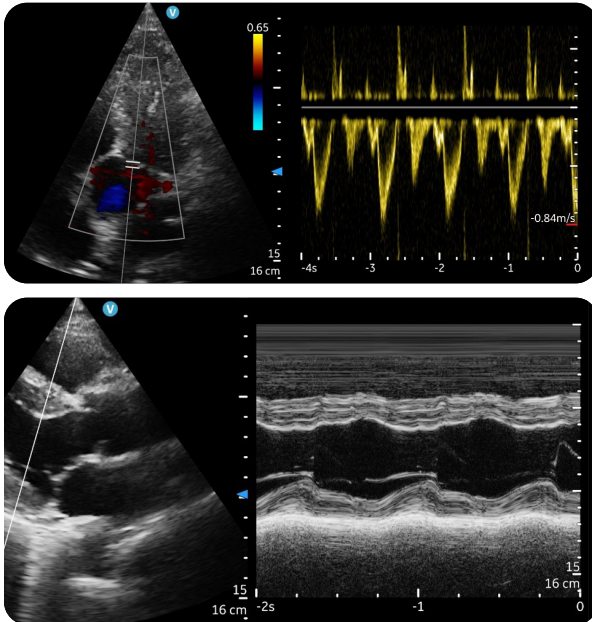


M-mode

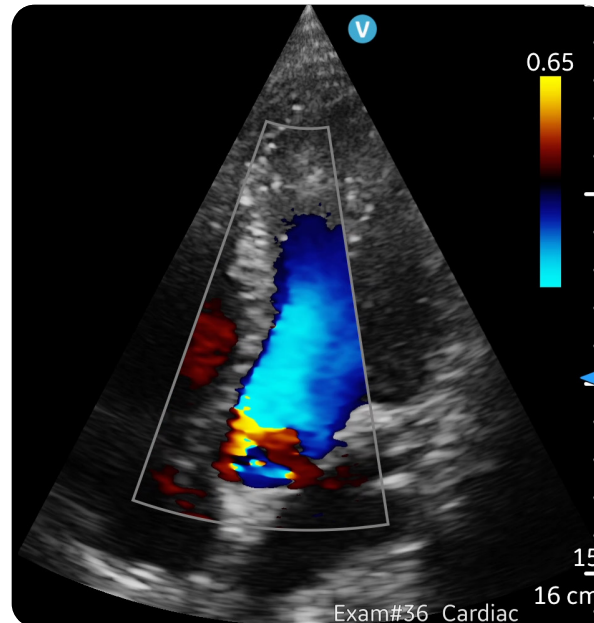
Image quality you can be confident in

Be confident with SignalMax + XDclear

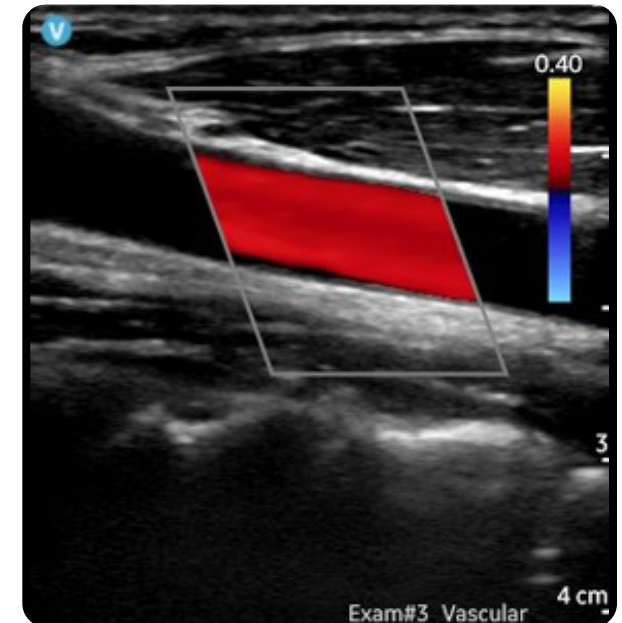
With our proprietary SignalMax™ + XDclear™ technology, GE HealthCare continues to challenge expectations regarding the limits of ultrasound image quality. We've set a new standard in handheld ultrasound by miniaturizing the power of XDclear to deliver extraordinary image quality with our sector phased array transducer. This combines the power of SignalMax high-intensity signal processing with industry-leading single crystal transducer technology for exceptional penetration, resolution and sensitivity in imaging performance.



Cardiac PW Doppler (top); M-mode (bottom)



Apical five chamber view with color

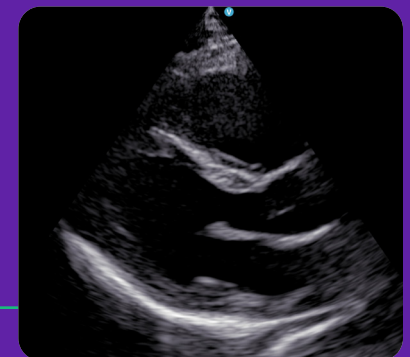


Common carotid artery with color flow

Now available

High-Definition Speckle Reduction Imaging (HD-SRI)

Vscan Air also uses High-Definition Speckle Reduction Imaging (HD-SRI) to give a boost to our already outstanding image quality. HD-SRI delivers improved image quality with optimized contrast resolution and a smoother appearance to enhance the details while maintaining the image's integrity.



Parasternal Long Axis (PLAX) with HD-SRI

Get more from your Vscan Air experience

Simplify your workflow. Verisound™ digital solutions get you there.

Verisound is a portfolio of connectivity, collaboration, and productivity tools that make ultrasound work more effectively for you, so you can work more effectively for your patients.



Device control, simplified

MyDeviceHub allows you to create logical “fleets” of installed Vscan Air probes from a single web-based portal to implement access policies and server configurations.



Anywhere image access

MyImageCloud² is a secure, cloud-based PACS hosting platform designed for handheld ultrasound users, offering reliable image storage and remote access for image review from anywhere.



Optimized reporting and workflow

ViewPoint™ 6 MobileConnect¹ allows you to document findings from point of care ultrasound exams directly at the patient’s bedside using a tablet or mobile device—enabling accurate documentation and billing for every scan, without adding administrative burden.



Live ultrasound collaboration

MyRemoteShare³ is a digital collaboration tool for handheld ultrasound users that enables real-time audio, video, and screen sharing during POCUS exams so operators can receive expert guidance or second opinions.

ViewPoint 6 MobileConnect



Put fast, efficient, and accurate POCUS ultrasound reporting in the palm of your hand.

MyRemoteShare



Consult colleagues in real-time on a shared screen for case review or mentoring.

Patient care first: supporting an encounter-based imaging workflow

Our goal is to provide solutions that release users from the traditional limitations of documentation and reporting, to help your organization reach the potential that handheld ultrasound can have on patient care.

Scan with confidence

Caption AI™: Caption Guidance™ and Caption Interpretation™ AutoEF

Software that enables more ultrasound users to feel confident in acquiring diagnostic-quality cardiac images for rapid assessments at the point of care.


Prescriptive Guidance
See real-time, turn-by-turn guidance that prompts your movements to properly position your probe for the view you want to capture.

Quality Meter
Watch the meter rise in real-time as the image improves and is closer to diagnostic quality.

AutoEF
Automatically calculates the LVEF from one or more of these three views: PLAX, AP2, and AP4. The calculation increases in accuracy as each view is acquired.

AutoCapture
For cases where you can reach the quality threshold, AutoCapture will automatically save your clip, hands-free. No need to tap *Store*.

Save Best Clip
Tap *Save best clip* to select the best available image loop for each view.

 **Caption AI now available on smartphones!**

Built by GE HealthCare, inspired by your needs

As a pioneer of innovation in ultrasound, GE HealthCare created the Vscan handheld ultrasound solution, informed by our ongoing collaboration with healthcare organizations and care providers everywhere.

Our easy-to-use, pocket-sized probes are built with the same ultrasound innovation GE HealthCare is known for, enabling a growing set of care providers in more than 100 countries.

We are by your side.

We support your ultrasound journey from first scan to confident use. Make the most of your system from the easy-to-use probe and intuitive app to GE HealthCare's renowned local service and educational tools. Vscan Air comes with a 3-year worry-free warranty.



1. Not available in all regions. Full ViewPoint 6 license is required for MobileConnect integration as well as ViewPoint 6 version 6.14.1 or higher. MobileConnect is available on compatible Apple® and Android™ devices, using Safari® and Google Chrome™ browsers, and can be used with any GE HealthCare or third-party ultrasound systems and devices using DICOM.

2. Works with Centricity™ Universal Viewer Zero Footprint and Centricity Enterprise Archive. Data for EU customers will be stored in AWS servers in Frankfurt, Germany.

3. MyRemoteShare is not intended for diagnostic use.

© 2025 GE HealthCare.

* The device has been verified for limited use outside of professional healthcare facilities. Use is restricted to environmental properties described in the user manual.

Vscan Air, SignalMax, Verisound, Centricity, Caption AI, Caption Guidance, Caption Interpretation, and ViewPoint are trademarks of GE HealthCare. GE is a trademark of the General Electric Company, used under trademark license. DICOM is a registered trademark of the National Electrical Manufacturers Association. Android is a trademark of Google LLC. iOS is a trademark of Cisco. Commercial availability of GE HealthCare products is subject to meeting local requirements in a given country or region. Contact a GE HealthCare Representative for more information. Intended for healthcare professionals only.

JB28296XX



GE HealthCare