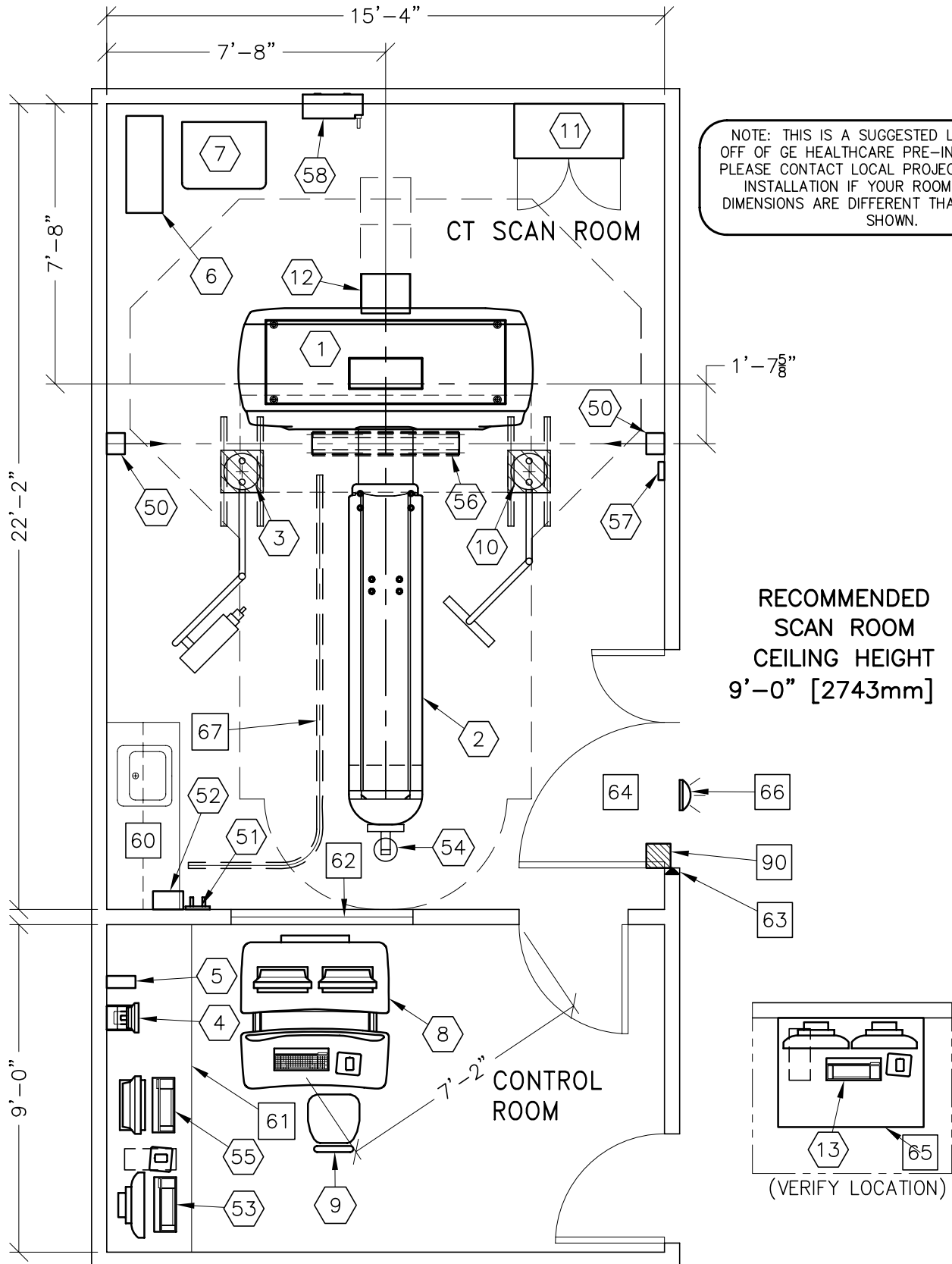


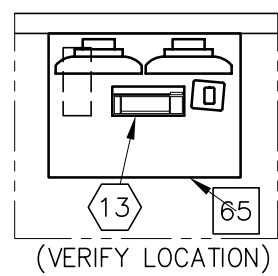


LIGHTSPEED RT16/XTRA (with High Capacity Table)

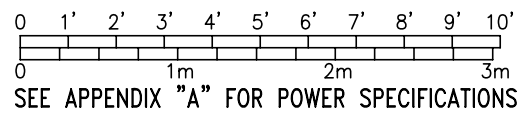


NOTE: THIS IS A SUGGESTED LAYOUT BASED OFF OF GE HEALTHCARE PRE-INSTALL MANUAL. PLEASE CONTACT LOCAL PROJECT MANAGER OF INSTALLATION IF YOUR ROOM LAYOUT OR DIMENSIONS ARE DIFFERENT THAN THE LAYOUT SHOWN.

RECOMMENDED
SCAN ROOM
CEILING HEIGHT
9'-0" [2743mm]



ROOM DIMENSIONS	LENGTH & WIDTH	CEILING HEIGHT
TYPICAL:	22'-0" x 14'-0" [6.7M x 4.3M]	9'-0" [2.43M]



ROOM PLAN LOCATED ON PAGE 6-76

ITEM ⬡	QUANTITY	ITEM DESCRIPTION	WEIGHT	HEAT OUTPUT
⬡1	1	LIGHTSPEED RT16/XTRA	3891 lbs	43010 btu
⬡2	1	GT2000 HIGH CAPACITY PATIENT TABLE WITH EXTENDED TABLE TOP	1102 lbs	703 btu
⬡3	1	INJECTOR HEAD ON OVERHEAD COUNTERPOISED SUSPENSION.	22 lbs	
⬡4	1	INJECTOR CONTROL CONSOLE	8 lbs	
⬡5	1	MAIN UNIT	13 lbs	
⬡6	1	UPS SYSTEM	350 lbs	
⬡7	1	POWER DISTRIBUTION UNIT	701 lbs	3402 btu
⬡8	1	OPERATOR'S CONSOLE / COMPUTER	493 lbs	8126 btu
⬡9	1	OPERATOR'S CHAIR		
⬡10	1	LCD MONITOR	61 lbs	300 btu
⬡11	1	STORAGE CABINET <EMPTY CABINET WEIGHT>	90 lbs	
⬡12	1	REAR CABLE COVER		
⬡13	1	ADVANTAGE WORKSTATION WITH TWO LCD MONITORS	81 lbs	1109 btu
⬡50	1	PATIENT POSITIONING LASER LIGHT	66 lbs	
⬡51	1	VARIAN CAMERA HOLDER <WHEN CAMERA IS IN STANDBY POSITION>		
⬡52	1	VARIAN POWER SUPPLY MODULE <GE PROJ MGR: PREINSTALL ITEM, PRE-ORDER FROM VARIAN>	13 lbs	
⬡53	1	VARIAN OPERATORS WORKSTATION	48 lbs	819 btu
⬡54	1	VARIAN CAMERA AND BRACKET	8 lbs	341 btu
⬡55	1	WORKSTATION COMPUTER		
⬡56	1	PATIENT POSITIONING LASER LIGHT	66 lbs	
⬡57	1	KEYPAD	2 lbs	
⬡58	1	MAIN DISCONNECT CONTROL	132 lbs	

ENVIRONMENT

Ambient Operation Temperature: 64-79° (F)
 Allowable Temperature Change: 5° F [3° C] per hour
 Humidity: 30-60 percent non condensing
 Allowable Humidity Change: 5 percent per hour
 Max - Altitude: 7875 [2400M] ft. above sea level

ROOM PLAN LOCATED ON PAGE 6-76

ITEM ◻	QUANTITY ↙	ITEM DESCRIPTION	WEIGHT	HEAT OUTPUT
		<p>***** CUSTOMER/CONTRACTOR SUPPLIED AND INSTALLED ITEMS *****</p>		
60		COUNTER TOP WITH SINK, BASE AND WALL CABINETS		
61		COUNTER TOP FOR EQUIPMENT- PROVIDE GROMMETED OPENINGS AS REQUIRED TO ROUTE INTERCONNECT CABLES TO RACEWAY BELOW COUNTERTOP.		
62		LEAD GLASS WINDOW		
63		DOOR LIMIT SWITCH (REQUIRED IN SOUTH CAROLINA, OTHERWISE NEEDED ONLY IF REQUIRED BY STATE/LOCAL CODES)		
64		MINIMUM DOOR OPENING FOR EQUIPMENT DELIVERY IS 44 IN. W x 83 IN. H [1118mm x 2108mm], CONTINGENT ON A 96 IN. [2438mm] CORRIDOR WIDTH		
65		WORKSTATION TABLE		
66		X-RAY ON WARNING LIGHT - AVAILABLE FROM GE SUPPLY CALL: 800-200-9760 GE CAT. NO. WXIABWW-DF-XIU		
67		CURTIAN RAIL		