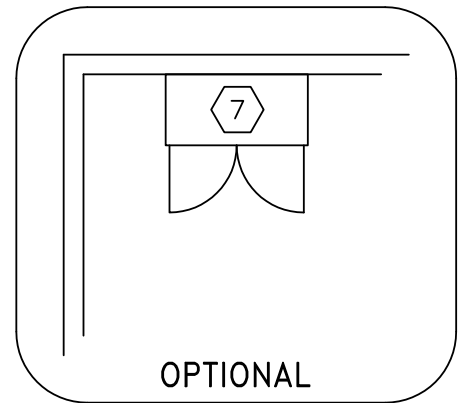
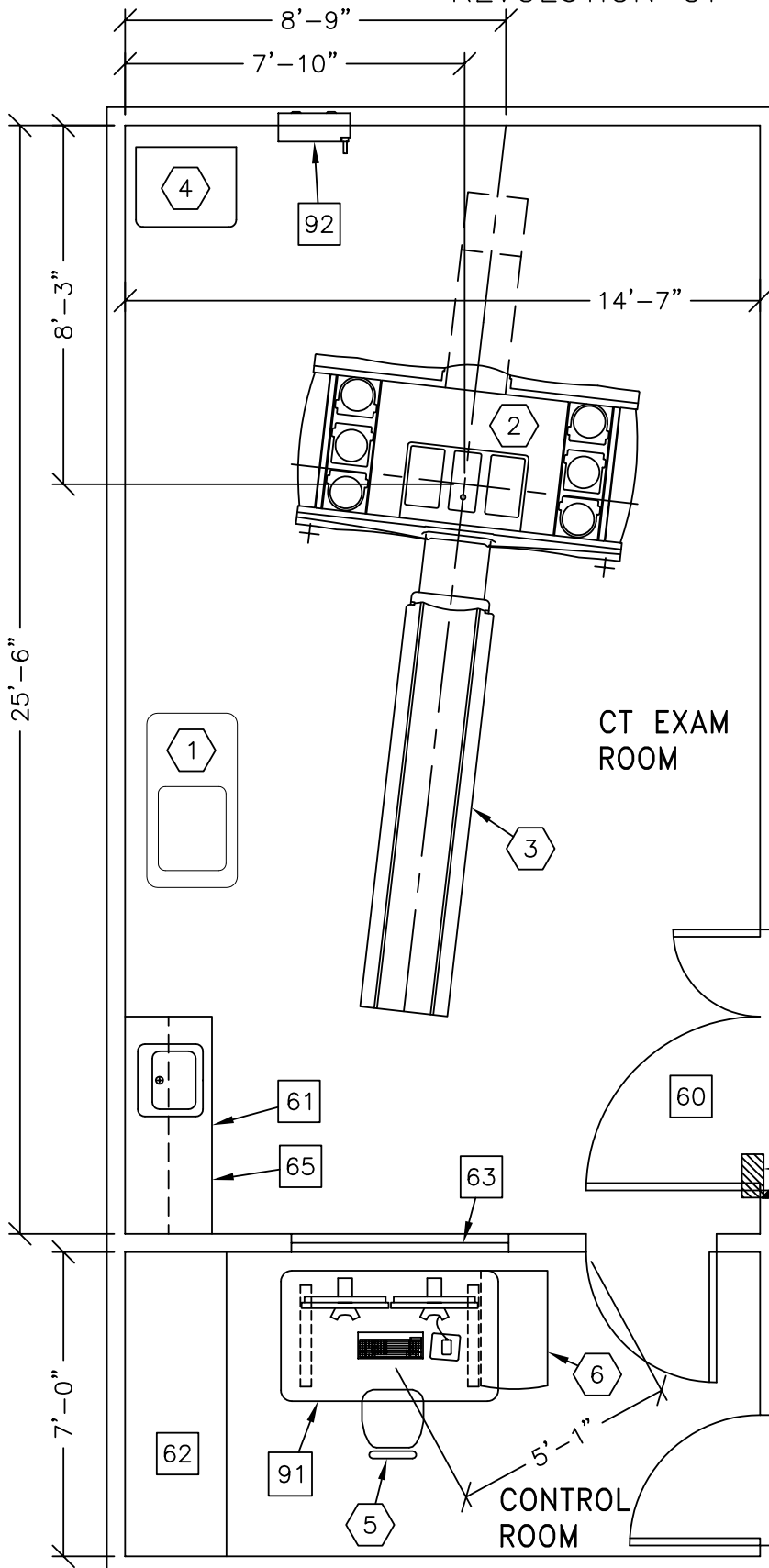


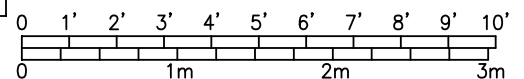


REVOLUTION CT



NOTE: THIS IS A SUGGESTED LAYOUT BASED OFF OF GE HEALTHCARE PRE-INSTALL MANUAL. PLEASE CONTACT LOCAL PROJECT MANAGER OF INSTALLATION IF YOUR ROOM LAYOUT OR DIMENSIONS ARE DIFFERENT THAN THE LAYOUT SHOWN.

ROOM DIMENSIONS	LENGTH & WIDTH	CEILING HEIGHT
TYPICAL:	20'-8" x 13'-2" [6.30M x 4.00M]	9'-0" [2.74M]



ROOM PLAN LOCATED ON PAGE 6-96

ITEM	QUANTITY	ITEM DESCRIPTION	WEIGHT	HEAT OUTPUT
①	1	REV. SYSTEM CABINET	701 lbs	4402 btu
②	1	REVOLUTION CT <INCLUDES TABLE BTU'S>	6336 lbs	27150 btu
③	1	PATIENT TABLE WITH EXTENDED TABLE TOP W/ 500 LB PATIENT	2259 lbs	
④	1	POWER DISTRIBUTION UNIT	795 lbs	1201 btu
⑤	1	OPERATOR'S CHAIR		
⑥	1	CONSOLE CABINET & LCD MONITORS	216 lbs	5102 btu
⑦	1	STORAGE CABINET <EMPTY CABINET WEIGHT>	99 lbs	
***** CUSTOMER/CONTRACTOR SUPPLIED AND INSTALLED ITEMS *****				
60		MINIMUM DOOR OPENING FOR EQUIPMENT DELIVERY IS 46 IN. W x 78 IN. H [1168.4mm x 1980mm], CONTINGENT ON A 96 IN. [2438.4mm] CORRIDOR WIDTH		
61		COUNTER TOP WITH SINK, BASE AND WALL CABINETS		
62		COUNTER TOP FOR EQUIPMENT-MINIMUM DEPTH 30 in. OR ADDITIONAL SHELVING MAY BE REQUIRED PROVIDE GROMMETED OPENINGS AS REQUIRED TO ROUTE INTERCONNECT CABLES TO RACEWAY BELOW COUNTERTOP.		
63		LEAD GLASS WINDOW		
64		X-RAY ON WARNING LIGHT - AVAILABLE FROM GE SUPPLY CALL: 800-200-9760 GE CAT. NO. WXIABWW-OF-XIU		
65		CASEWORK REQUIRED WITH A MINIMUM OF 16 CUBIC FEET TO STORE ALL SERVICE MATERIALS		
66		DOOR LIMIT SWITCH <REQUIRED IN SOUTH CAROLINA, OTHERWISE NEEDED ONLY IF REQUIRED BY STATE/LOCAL CODES>		
90		X-RAY ROOM WARNING LIGHT CONTROL PANEL REFERENCE JUNCTION POINT 'WLC' ON SHEET 'E1' FOR DETAILED DESCRIPTION -E4502RL FOR WARNING LIGHT CONTROL ONLY		
91		REVOLUTION MANUAL ADJUSTABLE TABLE AVAILABLE FROM GEHC, CALL 800-279-7925 OR LOCAL GE PROJECT MANAGER OF INSTALLATION CAT. NO. B7918AY		
92		MAIN DISCONNECT CONTROL		

ENVIRONMENT

Ambient Operation Temperature: 64-79° (F) 18-26° C  
 Allowable Temperature Change: 5° F [3° C] per hour  
 Humidity: 30-60 percent non condensing  
 Allowable Humidity Change: 5 percent per hour  
 Max - Altitude: 7875 [2400M] ft. above sea level