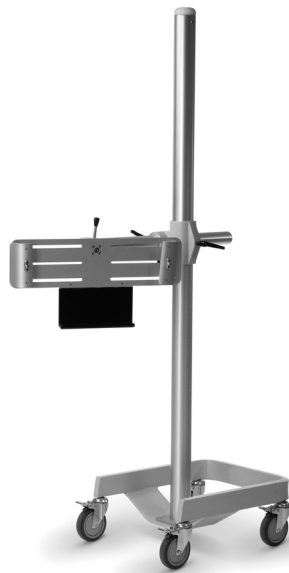


# Mobile Detector Holders Comparison Guide



## Flexi-Holder II Detector and Cassette Stand

- **Scan Flexibility** – Allows accurate radiographs to be taken from virtually any angle from floor level to 71"+ (180 cm) high
- **Versatility** – Accepts most cassettes and does not obscure cassette film area
- **Exclusive GE Design** – Designed for use with the GE detector and cassette



## Mobile Adjustable Detector Holder for Flashpad\*

- **Lower Extremity Exams** – Maximize patient positioning during chest, spine and lower extremities exams
- **Ease of Use** – Electric height adjustment allows the detector to be positioned at any height with the touch of a button
- **Improved Positioning Accuracy** – Straps and clear acrylic panel improves the accuracy of patient positioning





- Manual height and angle adjustments
- Tilt the detector/cassette 180 degrees facing straight up, down, or any angle in-between
- Telescopes up to 26" over the X-ray or operating room table
- Teflon-coated bracket will protect the detector while securing it in place
- Size: 22"W x 19"D x 75"H
- Weight: 110 lbs

Catalog #	Description	List Price
E6314J	Flexi-Holder Detector/ Cassette Holder	\$4299



- Height adjustable - detector and grid can move from 8" to 47" above the floor
- Detector and grid can be rotated 90° in either portrait or landscape
- Straps and a removable clear acrylic panel improve the accuracy of patient positioning
- Small footprint with large 4" locking wheels provides for easy movement room to room with detector and grid in place
- Size: 28.5"W x 26.25"D x 68"H
- Weight: 150 lbs

Catalog #	Description	List Price
E6313DA	Mobile vertical detector holder for Flashpad digital detector (120V, 60Hz)	\$8200

General Electric Company reserves the right to make changes in specifications and features shown herein, or discontinue any products described at any time without notice or obligation. Please contact your GE representative for the most current information.

© 2014 General Electric Company-All rights reserved.

GE, GE Monogram and imagination at work are trademarks of General Electric Company.

\*Trademarks of General Electric Company.

GE Healthcare, a division of General Electric Company.

GE Healthcare  
3000 North Grandview Blvd  
Waukesha, WI 53188  
U.S.A

ACCD-0241-05.14-EN-US  
JB21320US



imagination at work