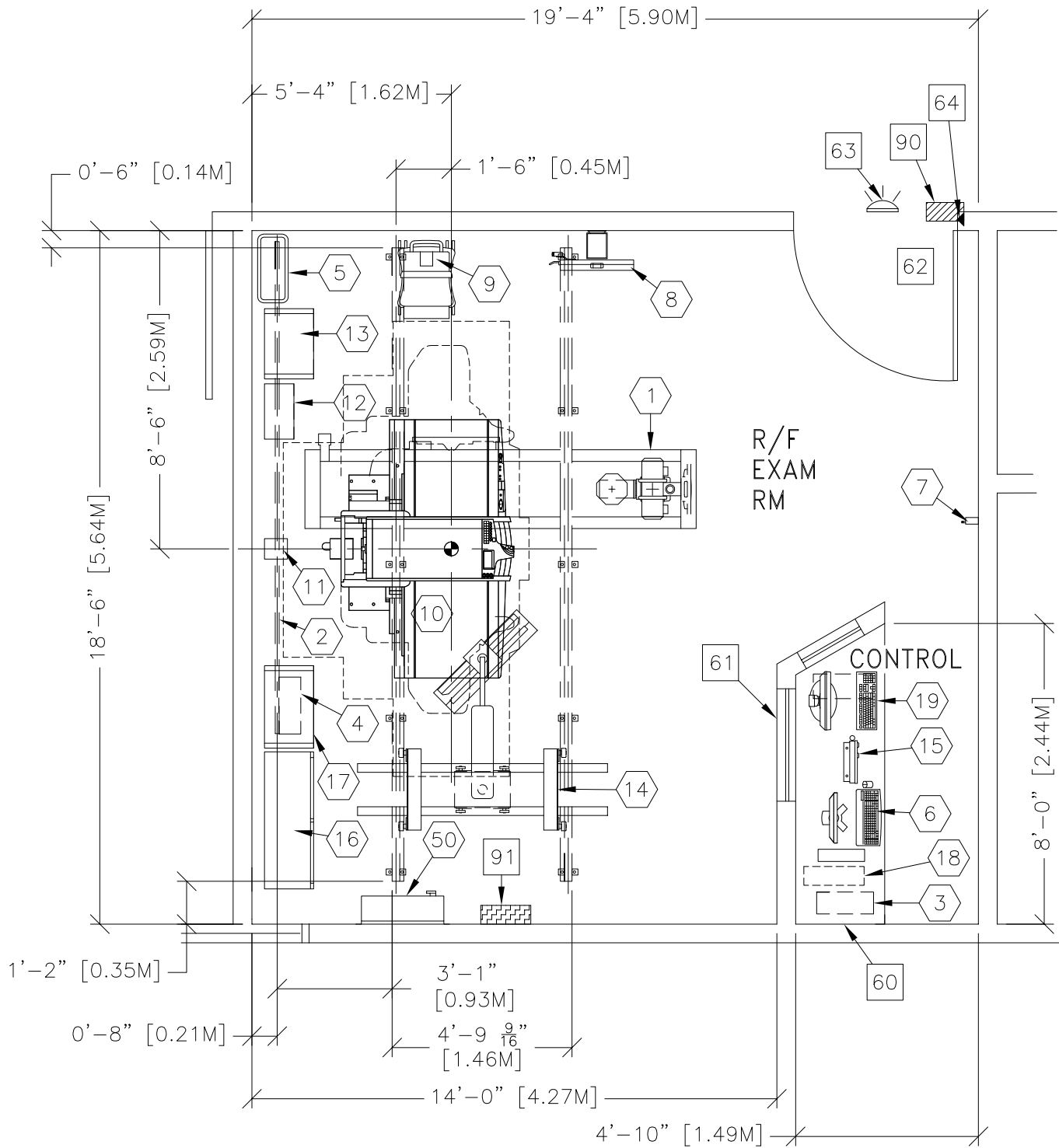




PRECISION 600FP



ROOM DIMENSIONS	LENGTH & WIDTH	CEILING HEIGHT
MINIMUM:	18'-6" x 14'-0" [5.64m x 4.27m]	9'-0" [2.74m]


ROOM PLAN LOCATED ON PAGE 2-62

ITEM	QUANTITY	ITEM DESCRIPTION	WEIGHT	HEAT OUTPUT
①	1	DST-100S CEILING SUSPENDED TUBE SUPPORT RAILS AND CARRIAGE	895 lbs	
②	1	CABLE DRAPE RAIL.		
③	1	AERO DR INTERFACE UNIT	24 lbs	112 btu
④	1	AERO DR GENERATOR INTERFACE UNIT	15 lbs	
⑤	1	AERO DR DOCKING STATION/BATTERY CHARGER (14x17 & 17x17 DETECTORS)	15 lbs	85 btu
⑥	1	AERO DR CONTROLLER CS-7	37 lbs	1774 btu
⑦	1	AERO DR ACCESS POINT (LOCATION TO BE DETERMINED BY FIELD AT INSTALL)	2 lbs	112 btu
⑧	1	WALL STAND	414 lbs	51 btu
⑨	1	TIMS 2000 DIGITAL VIDEO RECORDER KIT ON CART	55 lbs	781 btu
⑩	1	RF TABLE (WEIGHT INCLUDES 350 LB. PATIENT)	4168 lbs	1238 btu
⑪	1	TABLE CABLE STAND	24 lbs	
⑫	1	TABLE CONTROL UNIT	130 lbs	2000 btu
⑬	1	SYSTEM CABINET	421 lbs	1409 btu
⑭	1	ONE LCD MONITOR SUSPENSION	348 lbs	
⑮	1	GENERATOR CONTROL PANEL	17 lbs	
⑯	1	GENERATOR CONTROL CABINET	901 lbs	2116 btu
⑰	1	FLOURO CONTROL CABINET	238 lbs	3754 btu
⑱	1	PARTIAL SYSTEM UNINTERRUPTIBLE POWER SUPPLY	39 lbs	
⑲	1	MAIN PROCESSING UNIT	44 lbs	

ENVIRONMENT

Ambient Operation Temperature:
 Allowable Temperature Change: 50° TO 95° (F), 10° TO 35° (C)
 Humidity:
 Allowable Humidity Change: 30% to 85% (no condensations)
 Max - Altitude: 700 to 1060 hectopascals

ROOM PLAN LOCATED ON PAGE 2-62

ITEM 	QUANTITY	ITEM DESCRIPTION	WEIGHT	HEAT OUTPUT
60		COUNTER TOP FOR EQUIPMENT - MINIMUM DEPTH 24" AND ADDITIONAL SHELVING MAY BE REQUIRED BELOW COUNTER TOP FOR PC TOWER. PROVIDE GROMMETED OPENINGS AS REQUIRED TO ROUTE CABLES.		
61		CONTROL WALL TO CEILING WITH LEAD GLASS VIEWING WINDOW.		
62		MINIMUM DOOR OPENING FOR EQUIPMENT DELIVERY IS 47.2" W x 78.7" H [1200mm x 2000mm], CONTINGENT ON A 62.9" [1600mm] CORRIDOR WIDTH		
63		X-RAY ON WARNING LIGHT - AVAILABLE FROM GEXPRO CALL: 800-200-9760 GE CAT. NO. WXIABW-OF-XIU		
64		DOOR LIMIT SWITCH <NEEDED ONLY IF REQUIRED BY STATE/LOCAL CODES>		
90		X-RAY ROOM WARNING LIGHT/ROOM LIGHTING CONTROL PANEL CAT. NO. E4502SS		
91		MAIN DISCONNECT, <16" W x 24" H x 6" D>		