



**GE Healthcare  
Project Management**

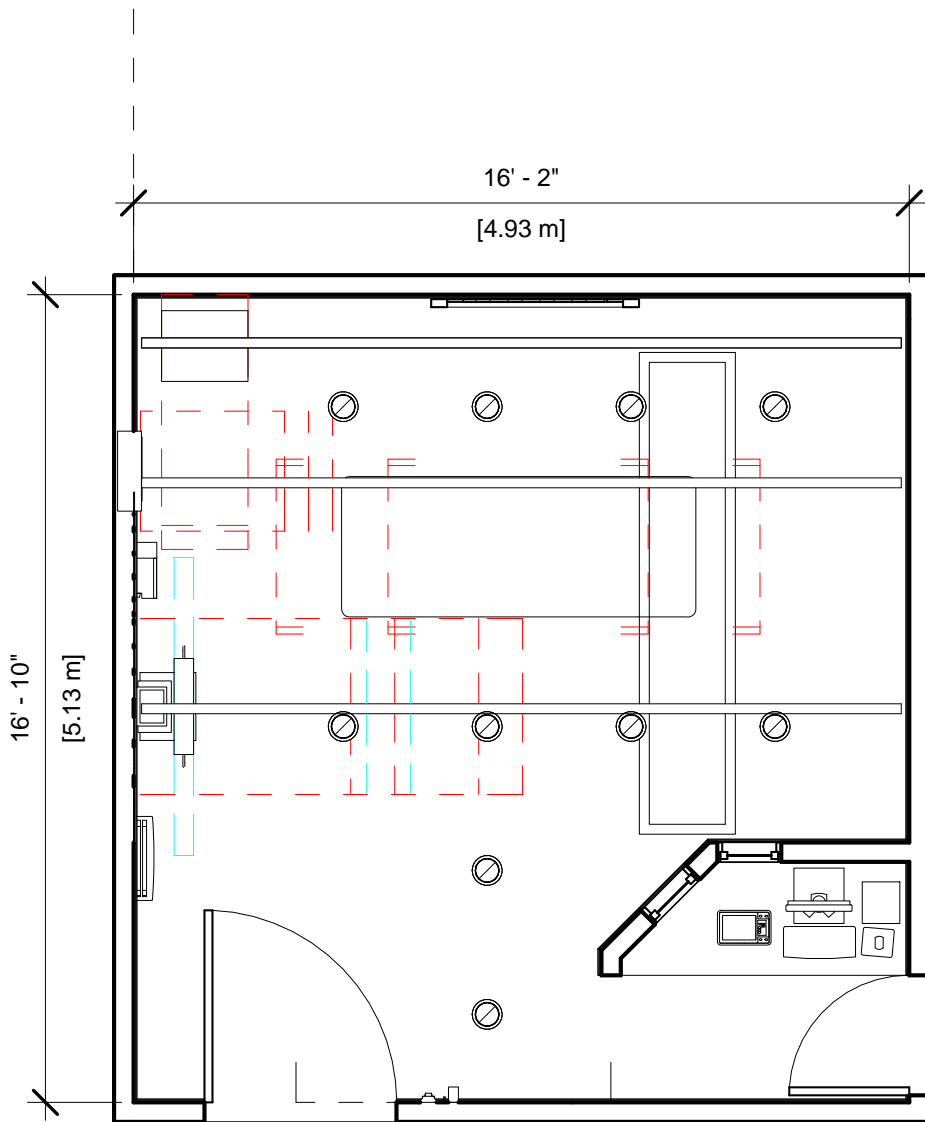
GE Healthcare has made reasonable efforts to ensure this BIM file conforms to requirements of the applicable pre-installation manual. This BIM file was produced to assist with site planning and is not intended for construction or final building modeling. GE Healthcare is not responsible for any damages resulting from use of such file for construction or final building modeling purposes. Compliance with all applicable local, state, and federal laws and regulations is the responsibility of the customer or its designated architects and engineers. Please keep in mind the information in this BIM file is dynamic and is subject to change without notice. It is the responsibility of the customer or its designated architect(s) and engineer(s) to ensure they have the latest equipment or product information.

**PROTEUS XR/a - RENDERING**

<b>Project number</b>	<b>1-124</b>
<b>Date</b>	<b>11.JAN.17</b>
<b>Drawn by</b>	<b>GENPACT</b>
<b>Checked by</b>	

**A-1**

**Scale 12" = 1'-0"**



### Specialty Equipment Schedule

Description	Weight (lbs)	BTU
<b>EXAM ROOM</b>		
LONGITUDINAL STATIONARY RAIL	68	0
CABLE DRAPE RAIL	180	0
XT RADIOGRAPHIC SUSPENSION WITH INBOARD MOUNTING	559	501
MAIN DISCONNECT, REFERENCE JUNCTION POINT 'A' ON SHEET E1 FOR DETAILED DESCRIPTION. CAT. NO. E4502ST OR WITH AUTO RESTART E4502RP. (20 W x 48 H x 6.68 in. D)	0	0
DR IMAGING CABINET	37	477
DR IMAGING CONSOLE	28	525
DETECTOR BIN - WALL MOUNT	33	
PROTEUS GENERATOR	330	2539
TETHER INTERFACE BOX	15	10
DONGLE	4	0
PROTEUS OPERATORS CONSOLE	6	180
PROTEUS TABLE	440	1501
PROTEUS WALL STAND	220	0



**GE Healthcare  
Project Management**

GE Healthcare has made reasonable efforts to ensure this BIM file conforms to requirements of the applicable pre-installation manual. This BIM file was produced to assist with site planning and is not intended for construction or final building modeling. GE Healthcare is not responsible for any damages resulting from use of such file for construction or final building modeling purposes. Compliance with all applicable local, state, and federal laws and regulations is the responsibility of the customer or its designated architects and engineers. Please keep in mind the information in this BIM file is dynamic and is subject to change without notice. It is the responsibility of the customer or its designated architect(s) and engineer(s) to ensure they have the latest equipment or product information.

#### PROTEUS XR/a - PLAN & SCHEDULE

Project number	1-124
Date	11.JAN.17
Drawn by	GENPACT
Checked by	

**A-2**

Scale 1/4" = 1'-0"

Hold the Left Click for Rotating around  
Use the Scroll for Zooming in and out



1-124 - Proteus XRa



GE Healthcare

[Click for Site Planning Support](#)