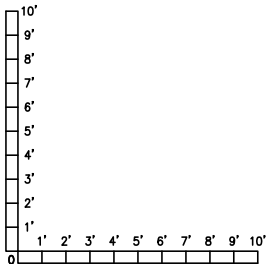
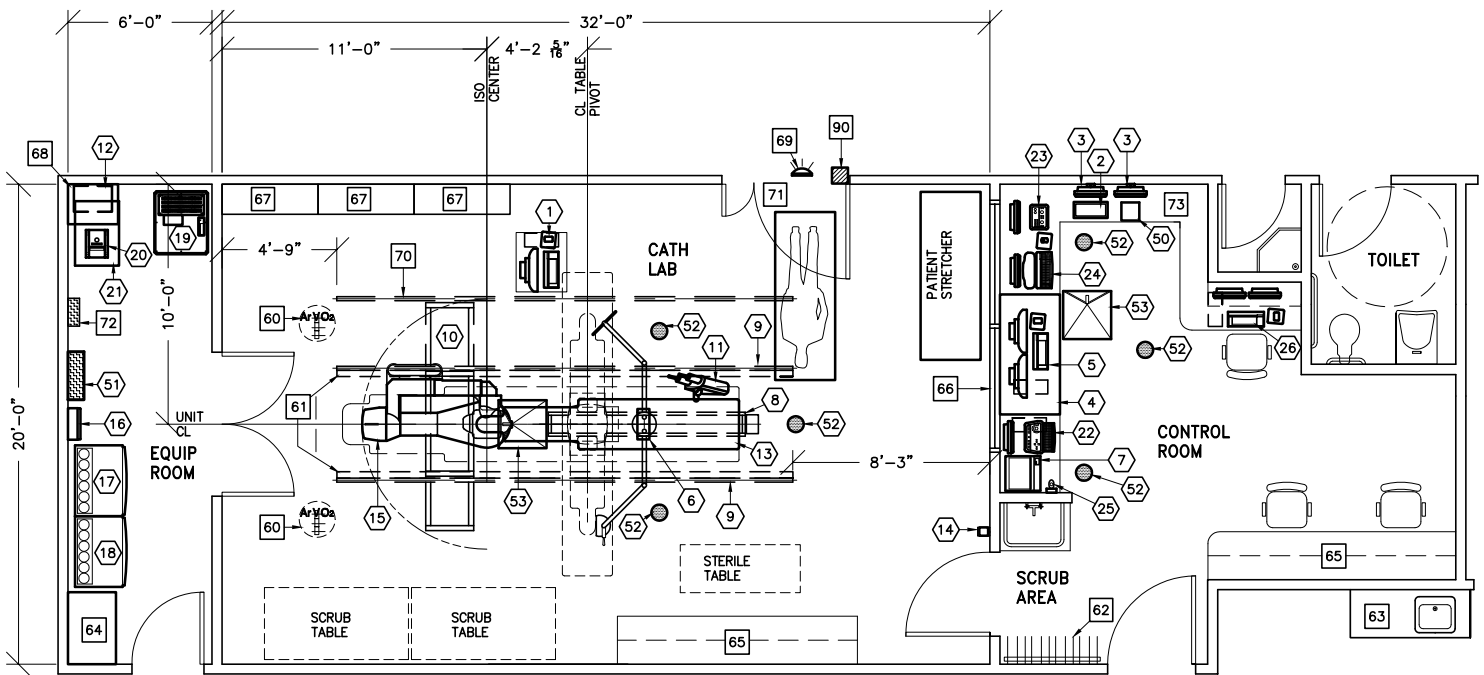




INNOVA PLUS



ROOM DIMENSIONS	LENGTH & WIDTH	CEILING HEIGHT
ABSOLUTE MINIMUM:	22'-6" x 13'-9" [6.89m x 4.23m]	9'-6" [2.84m]

SEE APPENDIX "A" FOR POWER SPECIFICATIONS

ROOM PLAN LOCATED ON PAGE 5-90

ITEM	QUANTITY	ITEM DESCRIPTION	WEIGHT	HEAT OUTPUT
①	1	NURSING NOTES WORKSTATION <ON CUSTOMER SUPPLIED CART>	46 lbs	682 btu
②	1	REMOTE CONTROL FOR INJECTOR	4 lbs	
③	2	18 in. MONITOR ON WALL SUPPORT	26 lbs	204 btu
④	1	WORKSTATION CART		
⑤	1	MAC LAB CONSOLE, INCLUDES MONITORS AND KEYBOARD	566 lbs	2935 btu
⑥	1	TRAM NET RACK	8 lbs	
⑦	1	COLOR PRINTER		1054 btu
⑧	1	COUNTERBALANCED EYE AND THYROID SHIELD WITH R96 LAMP	143 lbs	
⑨	2	LONGITUDINAL STATIONARY RAIL FOR XT SUSPENSION	68 lbs	
⑩	1	FOUR LCD MONITOR SUSPENSION ON 9 ft. 6 in. XT INBOARD BRIDGE	485 lbs	1157 btu
⑪	1	INJECTOR HEAD ON TABLE RAIL	15 lbs	
⑫	1	INJECTOR ELECTRONICS	37 lbs	320 btu
⑬	1	OMEGA IV/V TABLE WITH ROTATING TOP	1750 lbs	614 btu
⑭	1	XR BUZZER <LOCATED ABOVE CEILING>	2 lbs	
⑮	1	INNOVA POSITIONER <REFERENCE TABLE BASE-PLATE DETAIL FOR FLOOR MOUNTING INFORMATION>	1653 lbs	2416 btu
⑯	1	UPS INTERFACE BOX		
⑰	1	ATLAS CABINET <C2>	659 lbs	1825 btu
⑱	1	ATLAS CABINET <C1>	1115 lbs	3389 btu
⑲	1	UPS CABINET	1170 lbs	4061 btu
⑳	1	DETECTOR CHILLER	33 lbs	706 btu
㉑	1	WATER CHILLER	449 lbs	18716 btu
㉒	1	IVUS VOLCANO S51 CONSOLE, INCLUDES FLAT PANEL MONITOR AND KEYBOARD <DESK MOUNTED>	68 lbs	1631 btu
㉓	1	CONTROL ROOM MONITOR WITH DL KEYPAD	22 lbs	204 btu
㉔	1	OPERATORS CONSOLE	22 lbs	546 btu
㉕	1	BOLUS CHASE HANDSWITCH	2 lbs	
㉖	1	AW WORKSTATION	81 lbs	1201 btu
⑤①	1	VITALINQ CONSOLE		
⑤①	1	INNOVA MAIN DISCONNECT, REFERENCE JUNCTION POINT 'PDB' ON SHEET E1 FOR DETAILED DESCRIPTION.	326 lbs	1532 btu
⑤②	6	VITALINQ SPEAKER		
⑤③	2	VITALINQ MICROPHONE		

ENVIRONMENT

Ambient Operation Temperature: 55-75° (F)
 Allowable Temperature Change: 15° (F) per hour
 Humidity: 30%-70% non condensing
 Allowable Humidity Change: 10% per hour
 Max - Altitude: 8000 ft. above sea level

ROOM PLAN LOCATED ON PAGE 5-90

ITEM	QUANTITY	ITEM DESCRIPTION	WEIGHT	HEAT OUTPUT
		***** CUSTOMER/CONTRACTOR SUPPLIED AND INSTALLED ITEMS *****		
60		MED GASES IN CEILING		
61		BEARING BLOCK OUTLINE, SEE S1 FOR MORE INFORMATION.		
62		LEAD APRON RACK		
63		COUNTER TOP WITH SINK AND BASE CABINETS		
64		CUSTOMER SUPPLIED STORAGE CABINET		
65		COUNTER TOP WITH BASE AND WALL CABINETS		
66		CONTROL WALL TO CEILING WITH LEAD GLASS WINDOW		
67		CATHETER CABINETS		
68		SHELF - CUSTOMER TO PROVIDE ADEQUATE WALL SUPPORT		
69		X-RAY ON WARNING LIGHT - AVAILABLE FROM GE SUPPLY CALL: 800-200-9760 GE CAT. NO. WXIABWW-OF-XIU		
70		CABLE DRAPE RAIL.		
71		MINIMUM DOOR OPENING FOR EQUIPMENT DELIVERY IS 44 IN. W x 83 IN. H [1118mm x 2108mm], CONTINGENT ON A 96 IN. [2438mm] CORRIDOR WIDTH		
72		150-AMP LOCAL SERVICE DISCONNECT FOR LOCK-OUT/TAG-OUT CAPABILITY. <MAY BE A FUSED DISCONNECT, CIRCUIT BREAKER OR SAFETY SWITCH.>		
73		COUNTER TOP FOR EQUIPMENT- MINIMUM DEPTH 30 in. OR ADDITIONAL SHELVING MAY BE REQUIRED. PROVIDE GROMMETED OPENINGS AS REQUIRED TO ROUTE INTERCONNECT CABLES TO RACEWAY BELOW COUNTERTOP.		
90		X-RAY ROOM WARNING LIGHT/ROOM LIGHTING CONTROL PANEL REFERENCE JUNCTION POINT 'XRLC' ON SHEET 'E1' FOR DETAILED DESCRIPTION -CAT. NO. E4502SS FOR WARNING LIGHT & ROOM LIGHT CONTROL.		