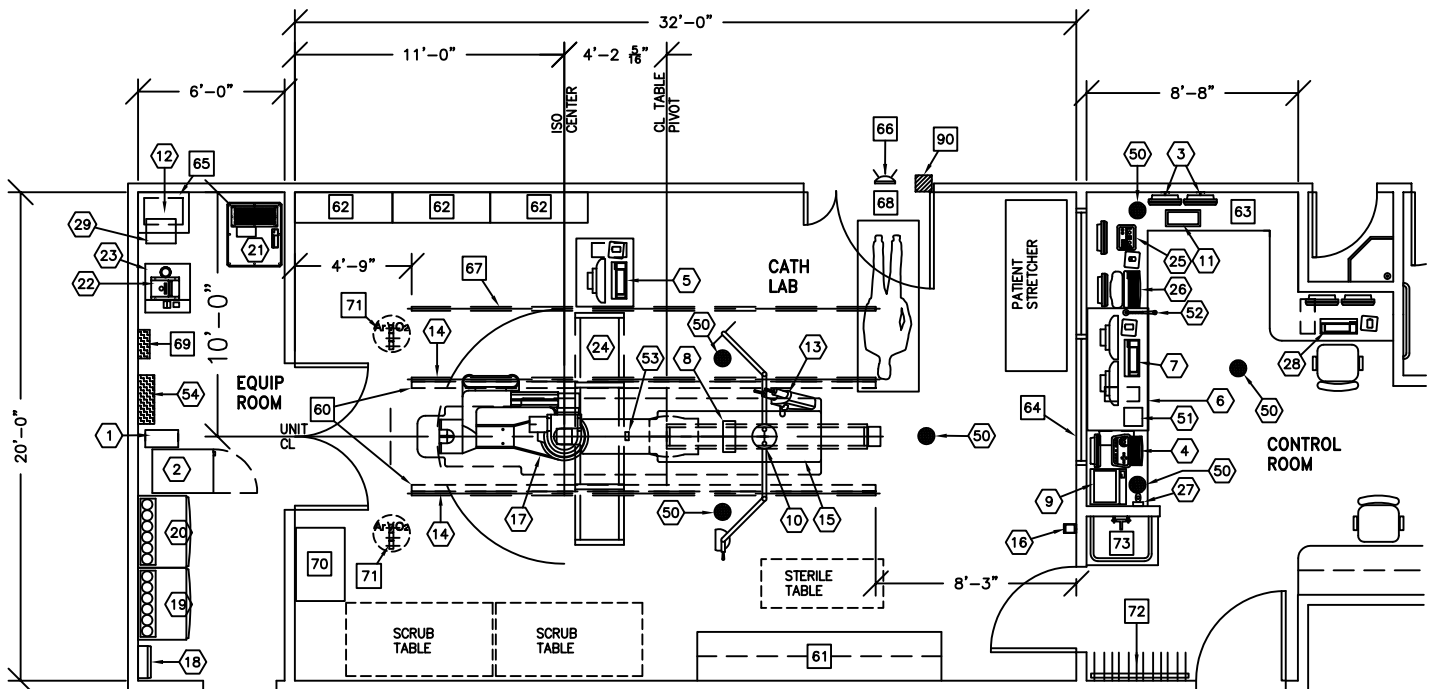


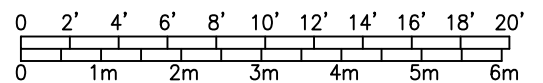


INNOVA IGS 520, 530, 540 INTERVENTIONAL CARDIOLOGY (IC)



NOTE: THIS IS A SUGGESTED LAYOUT BASED OFF OF GE HEALTHCARE PRE-INSTALL MANUAL. PLEASE CONTACT LOCAL PROJECT MANAGER OF INSTALLATION IF YOUR ROOM LAYOUT OR DIMENSIONS ARE DIFFERENT THAN THE LAYOUT SHOWN.

ROOM DIMENSIONS	LENGTH & WIDTH	CEILING HEIGHT
RECOMMENDED:	32'-0" x 25'-0" [9.75m x 7.62m]	9'-6" [2.89m]



SEE APPENDIX "A" FOR POWER SPECIFICATIONS

ROOM PLAN LOCATED ON PAGE 5-105

ITEM	QUANTITY	ITEM DESCRIPTION	WEIGHT	HEAT OUTPUT
①	1	3 KVA UPS CABINET <LARGE DISPLAY SUBSYSTEM OPTION>	77 lbs	546 btu
②	1	LARGE DISPLAY MONITOR CABINET	253 lbs	3412 btu
③	2	18 in. MONITOR ON WALL SUPPORT	26 lbs	204 btu
④	1	IVUS VOLCANO S51 CONSOLE, INCLUDES FLAT PANEL MONITOR AND KEYBOARD <DESK MOUNTED>	68 lbs	1631 btu
⑤	1	NURSING NOTES WORKSTATION	46 lbs	682 btu
⑥	1	WORKSTATION CART		
⑦	1	MAC-LAB CONSOLE, INCLUDES MONITORS AND KEYBOARD	566 lbs	2935 btu
⑧	1	TRAM NET RACK	8 lbs	
⑨	1	COLOR PRINTER		1054 btu
⑩	1	COUNTERBALANCED EYE AND THYROID SHIELD WITH R96 LAMP	143 lbs	
⑪	1	REMOTE CONTROL FOR INJECTOR	4 lbs	
⑫	1	INJECTOR ELECTRONICS	37 lbs	320 btu
⑬	1	INJECTOR HEAD ON TABLE RAIL	15 lbs	
⑭	2	LONGITUDINAL STATIONARY RAIL FOR XT SUSPENSION	68 lbs	
⑮	1	OMEGA IQ TABLE	1750 lbs	614 btu
⑯	1	XR BUZZER <LOCATED ABOVE CEILING>	2 lbs	
⑰	1	INNOVA POSITIONER <REFERENCE TABLE BASE-PLATE DETAIL FOR FLOOR MOUNTING INFORMATION>	1653 lbs	2416 btu
⑱	1	UPS INTERFACE BOX		
⑲	1	ATLAS CABINET <C2>	659 lbs	1825 btu
⑳	1	ATLAS CABINET <C1>	1115 lbs	3389 btu
㉑	1	UPS CABINET	1170 lbs	4061 btu
㉒	1	DETECTOR CHILLER	33 lbs	706 btu
㉓	1	WATER 4100 CHILLER	264 lbs	18730 btu
㉔	1	LARGE DISPLAY MONITOR ON SINGLE MONITOR SUSPENSION, 9 ft. 6 in. INBOARD BRIDGE <MOUNT TWO GE MONITORS ON BACKSIDE OF LD MONITOR>	784 lbs	1706 btu
㉕	1	CONTROL ROOM MONITOR WITH DL KEYPAD	22 lbs	204 btu
㉖	1	OPERATORS CONSOLE	22 lbs	546 btu
㉗	1	BOLUS CHASE HANDSWITCH	2 lbs	

ENVIRONMENT

Ambient Operation Temperature: 68°-77° F, (20°-25° C)
 Allowable Temperature Change: Not Available
 Humidity: 30%-75% non condensing
 Allowable Humidity Change: Not Available
 Max - Altitude: 9842 ft. (3000 M) above sea level

ROOM PLAN LOCATED ON PAGE 5-105

ITEM	QUANTITY	ITEM DESCRIPTION	WEIGHT	HEAT OUTPUT
②8	1	AW WORKSTATION	81 lbs	1201 btu
②9	1	COOLIX 4100 AUTOTRANSFORMER	66 lbs	238 btu
⑤0	6	VITALINQ SPEAKER		
⑤1	1	VITALINQ CONSOLE		
⑤2	1	VITALINQ MICROPHONE		
⑤3	1	VITALINQ MICROPHONE (ONE ON MONITOR BRIDGE IN EXAM ROOM)		
⑤4	1	INNOVA MAIN DISCONNECT, REFERENCE JUNCTION POINT 'PDB' ON SHEET E1 FOR DETAILED DESCRIPTION. ***** CUSTOMER/CONTRACTOR SUPPLIED AND INSTALLED ITEMS *****	326 lbs	1532 btu
60		BEARING BLOCK OUTLINE, SEE S1 FOR MORE INFORMATION.		
61		COUNTER TOP WITH BASE AND WALL CABINETS		
62		CATHETER CABINETS		
63		COUNTER TOP FOR EQUIPMENT-SHELVING MAY BE REQUIRED PROVIDE GROMMETED OPENINGS AS REQUIRED TO ROUTE INTERCONNECT CABLES TO RACEWAY BELOW COUNTERTOP		
64		CONTROL WALL TO CEILING WITH LEAD GLASS VIEWING WINDOW.		
65		SHELF - CUSTOMER TO PROVIDE ADEQUATE WALL SUPPORT		
66		X-RAY ON WARNING LIGHT - AVAILABLE FROM GE SUPPLY CALL: 800-200-9760 GE CAT. NO. WXIABWW-OF-XIU		
67		CABLE DRAPE RAIL.		
68		MINIMUM DOOR OPENING FOR EQUIPMENT DELIVERY IS 44 IN. W x 83 IN. H [1118mm x 2108mm], CONTINGENT ON A 96 IN. [2438mm] CORRIDOR WIDTH		
69		150-AMP LOCAL SERVICE DISCONNECT FOR LOCK-OUT/ TAG-OUT CAPABILITY. (MAY BE A FUSED DISCONNECT, CIRCUIT BREAKER OR SAFETY SWITCH.)		
70		CUSTOMER SUPPLIED STORAGE CABINET		
71		MED GASES IN CEILING		
72		LEAD APRON RACK		
73		SCRUB SINK		
90		X-RAY ROOM WARNING LIGHT/ROOM LIGHTING CONTROL PANEL REFERENCE JUNCTION POINT 'XRLC' ON SHEET 'E1' FOR DETAILED DESCRIPTION -CAT. NO. E4502SS FOR WARNING LIGHT & ROOM LIGHT CONTROL.		