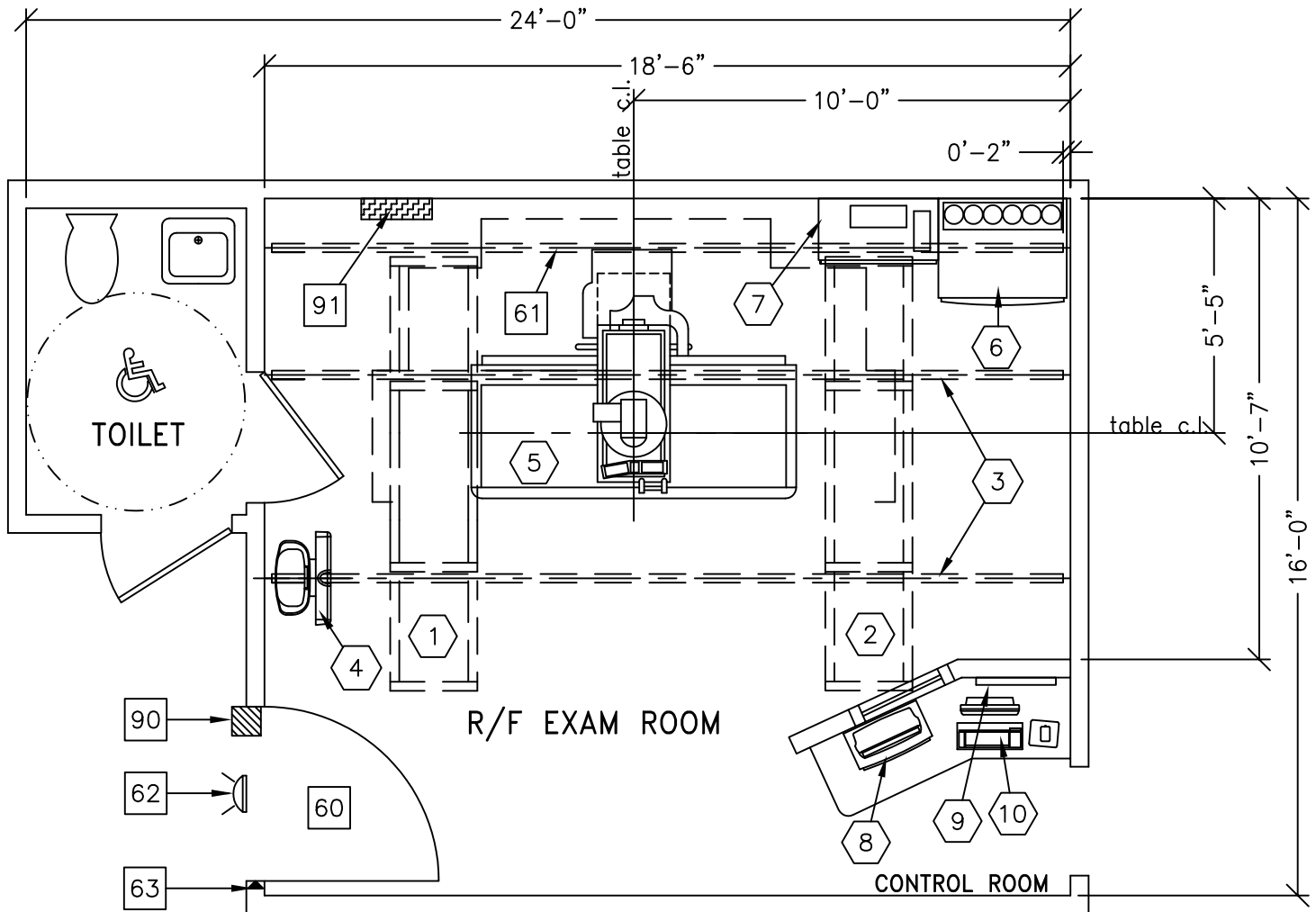




PRECISION 500D/XT INBOARD/SG-80

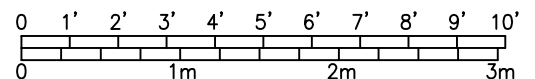
RECOMMENDED CEILING HEIGHT
9'-6" [2895mm]



HAND SWITCH IS LOCATED ON THE RIGHT SIDE OF THE CONTROL CONSOLE. OBSERVE LOCAL RADIATION PROTECTION GUIDELINES IN RESPECT TO PLACEMENT OF CONSOLE.

NOTE: WHEN PLANNING FOR TILTING OR EXTENDED WALL STAND OVERALL ROOM SIZE MAY NEED TO BE INCREASED

ROOM DIMENSIONS	LENGTH & WIDTH	CEILING HEIGHT
MINIMUM:	16'-6" x 12'-6" [5.03m x 3.81m]	9'-0" [2.74"]



SEE APPENDIX "A" FOR POWER SPECIFICATIONS

ROOM PLAN LOCATED ON PAGE 2-54

ITEM	QUANTITY	ITEM DESCRIPTION	WEIGHT	HEAT OUTPUT
①	1	ONE LCD MONITOR SUSPENSION ON XT INBOARD BRIDGE	282 lbs	68 btu
②	1	XT RADIOGRAPHIC SUSPENSION WITH INBOARD MOUNTING.	559 lbs	
③	2	LONGITUDINAL STATIONARY RAIL FOR XT SUSPENSION	68 lbs	
④	1	SG-80 CHEST UNIT	396 lbs	
⑤	1	PRECISION R&F TABLE WITH INTELLIGENT DIGITAL DEVICE	3443 lbs	426 btu
⑥	1	SYSTEMS CABINET	881 lbs	2457 btu
⑦	1	POSITIONER CABINET	685 lbs	3412 btu
⑧	1	INTELLIGENT USER INTERFACE AND MONITOR SUPPORT	37 lbs	180 btu
⑨	1	IUI ACCESSORY ASSEMBLY	15 lbs	
⑩	1	DIGITAL REVIEW STATION	15 lbs	228 btu
***** CUSTOMER/CONTRACTOR SUPPLIED AND INSTALLED ITEMS *****				
60	MINIMUM DOOR OPENING FOR EQUIPMENT DELIVERY IS 44 IN. W X 83 IN. H [1118MM X 2108MM], CONTINGENT ON A 96 IN. [2438MM] CORRIDOR WIDTH			
61	CABLE DRAPE RAIL.			
62	X-RAY ON WARNING LIGHT-AVAILABLE FROM GE SUPPLY CALL: 800-200-9760 GE CAT. NO. WXIABWW-0F-XIU			
63	DOOR LIMIT SWITCH			
90	MAIN DISCONNECT, REFERENCE JUNCTION POINT 'A' ON SHEET E1 FOR DETAILED DESCRIPTION. CAT. NO. E4502RS OR WITH AUTO RESTART E4502SA. <20 W x 48 H x 6.68 in. D>			
91	X-RAY ROOM WARNING LIGHT/ROOM LIGHTING CONTROL PANEL. GE CAT. NO. E4500SS FOR WARNING LIGHT & ROOM LIGHT CONTROL.			

ENVIRONMENT

Ambient Operation Temperature: 55-75° (F)
 Allowable Temperature Change: 15° (F) per hour
 Humidity: 20-80 percent non condensing
 Allowable Humidity Change: 10 percent per hour
 Max - Altitude: 8000 ft. above sea level