

GE Healthcare

Perfect match

Centricity Group Management and Centricity EMR



Your practice has two distinct sides: clinical and financial. With the right IT solution, you can bring them together – for the sake of your patients and your business.

Half efficient doesn't

Your Centricity® Group Management software is a proven financial management and decision-support solution that suits your practice to a tee. No wonder. Centricity was designed by clinicians, specifically for the workflow of sophisticated group practices like yours.

Since implementing Centricity, your practice has benefited from the streamlined, paperless workflow. Patient scheduling and registration efficiency has increased. Your revenue cycle is managed better than ever, and the reporting capabilities give you the insight to make smart business decisions.

Congratulations. You're halfway there.

cut it.

The next step is selecting an electronic medical record (EMR) for your clinical workflow. Lucky for you, GE Healthcare offers Centricity EMR, the perfect match to your existing Centricity Group Management software.

By choosing an EMR from the same company that has engineered your revenue cycle management software, you're assured of smoother workflows. Both products are developed in lock-step together, keeping coordinated product roadmaps in mind.

Plus, you have the benefit of being able to rely on a single, trusted vendor for service and support. A company with plenty of expertise in both healthcare and information technology.

Centricity Group Management and Centricity EMR.
The complete outfit for your practice.



Tight connections keep everything in sync. Your clinical and financial sides fit together as one. So your right hand intuitively knows what the left hand is doing.

An EMR

Centricity EMR is an award-winning electronic medical record, utilized by over 30,000 clinicians nationwide in both private practices and complex integrated delivery networks.

It streamlines workflow and helps clinicians provide safer, more efficient patient care by making patient information available where it's needed most – right at the point of care. With Centricity EMR, you can:

- Access all patient data at the point of care
- Optimize charge capture
- Streamline workflow
- Benchmark clinical outcomes nationally or locally to support pay-for-performance initiatives
- Provide physicians with intelligent decision-support tools for more informed treatment decisions

When you couple Centricity EMR with your current Centricity Group Management software, you get control over your entire care cycle.

Smooth synchronization and universal workflows eliminate duplication and increase your staff's productivity. Processes are the same. Fields match up. For instance, entered physician orders are automatically recognized in the group management system. You get easy access to all your data – from scheduling and eligibility information, to clinical test results and electronic payment remittance.

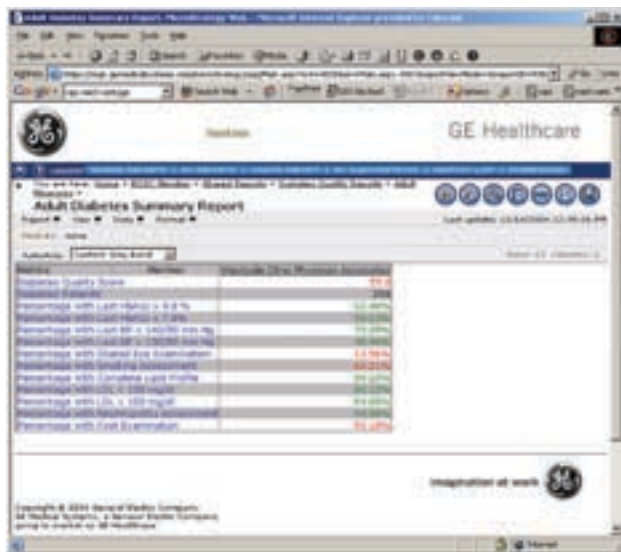
It's all there, right at your fingertips.

that fits...



Turn facts and figures into a meaningful analysis. Put information at the center of care. Make better decisions for your patients and your practice.

A comprehensive



Centricity EMR is a robust clinical solution that not only helps you provide better patient care on a day-to-day basis, it also serves as a foundation for future care.

Access to valuable benchmarking information helps you examine your patients in another way - so you can proactively manage the care of patient populations, and make effective treatment decisions.

The close connections of Centricity Group Management and Centricity EMR allow data to be entered in a structured format, which can be queried later for reporting and charting summaries. Since clinical information is then stored in a structured, discrete format, participation in results-based reimbursement programs is simplified.

By uniting the financial data from your Centricity Group Management software with the clinical information of Centricity EMR, you get the full picture of health: for your patients and your practice.



©2008 General Electric Company – All rights reserved.

General Electric Company reserves the right to make changes in specifications and features shown herein, or discontinue the product described at any time without notice or obligation.

This does not constitute a representation or warranty or documentation regarding the product or service featured.

GE, the GE Monogram and Centricity® are trademarks of General Electric Company.

General Electric Company, by and through its GE Healthcare division.

Healthcare Re-imagined

GE is dedicated to helping you transform healthcare delivery by driving critical breakthroughs in biology and technology. Our expertise in medical imaging and information technologies, medical diagnostics, patient monitoring systems, drug discovery, and biopharmaceutical manufacturing technologies is enabling healthcare professionals around the world to discover new ways to predict, diagnose and treat disease earlier. We call this model of care “Early Health.” The goal: to help clinicians detect disease earlier, access more information and intervene earlier with more targeted treatments, so they can help their patients live their lives to the fullest. Re-think, Re-discover, Re-invent, Re-imagine.

GE Healthcare IT
540 West Northwest Highway
Barrington, IL 60010
U.S.A.

www.gehealthcare.com/centricity



imagination at work