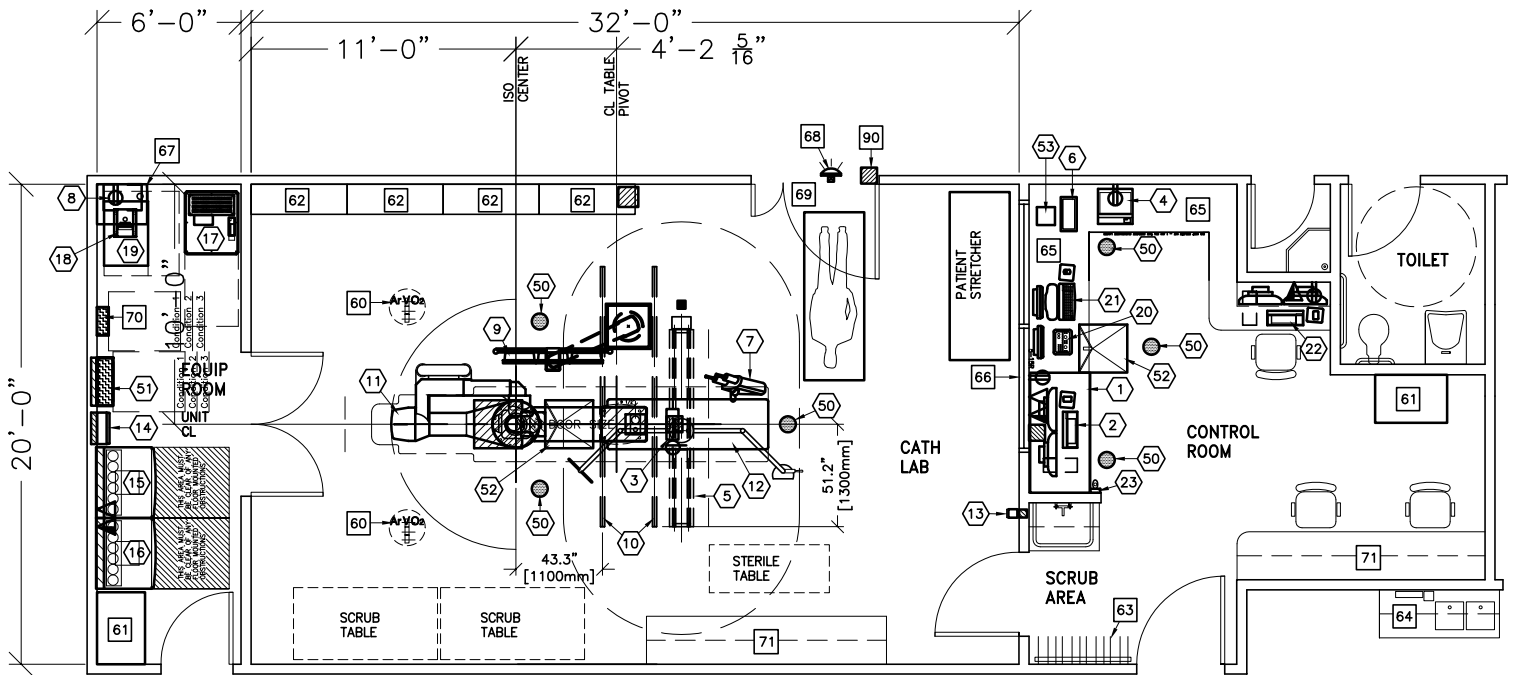


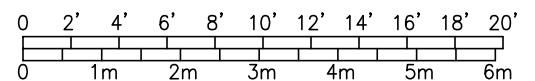


Innova Optima



NOTE: THIS IS A SUGGESTED LAYOUT BASED OFF OF GE HEALTHCARE PRE-INSTALL MANUAL. PLEASE CONTACT LOCAL PROJECT MANAGER OF INSTALLATION IF YOUR ROOM LAYOUT OR DIMENSIONS ARE DIFFERENT THAN THE LAYOUT SHOWN.

ROOM DIMENSIONS	LENGTH & WIDTH	CEILING HEIGHT
MINIMUM:	26'-0" x 20'-6" [7.92m x 6.24m]	9'-6" [2.89m]



SEE APPENDIX "A" FOR POWER SPECIFICATIONS

ROOM PLAN LOCATED ON PAGE 4-64

ITEM	QUANTITY	ITEM DESCRIPTION	WEIGHT	HEAT OUTPUT
①	1	WORKSTATION CART		
②	1	MAC LAB CONSOLE, INCLUDES MONITORS AND KEYBOARD	566 lbs	2935 btu
③	1	TRAM NET RACK	8 lbs	
④	1	COLOR PRINTER		1054 btu
⑤	1	COUNTERBALANCED EYE AND THYROID SHIELD WITH R96 LAMP	143 lbs	
⑥	1	REMOTE CONTROL FOR INJECTOR	4 lbs	
⑦	1	INJECTOR HEAD ON TABLE RAIL	15 lbs	
⑧	1	INJECTOR ELECTRONICS	37 lbs	320 btu
⑨	1	ERGO PRE-CABLED THREE LCD MONITOR SUSPENSION <SELF WEIGHT WITHOUT MONITOR AND ACCESSORIES; MAXIMUM MONITOR WEIGHT 15.4 lbs EACH>		
⑩	2	ERGO STATIONARY RAILS <10' -10"> <INCLUDES CABLE TRACK>	81 lbs	
⑪	1	INNOVA POSITIONER <REFERENCE TABLE BASE-PLATE DETAIL FOR FLOOR MOUNTING INFORMATION>	1653 lbs	2416 btu
⑫	1	OMEGA IV/V TABLE WITH ROTATING TOP	1300 lbs	614 btu
⑬	1	XR BUZZER <LOCATED ABOVE CEILING>	2 lbs	
⑭	1	UPS INTERFACE BOX		
⑮	1	ATLAS CABINET <C2>	659 lbs	1825 btu
⑯	1	ATLAS CABINET <C1>	1115 lbs	3389 btu
⑰	1	UPS CABINET	1170 lbs	4061 btu
⑱	1	DETECTOR CHILLER	33 lbs	706 btu
⑲	1	WATER CHILLER	449 lbs	18716 btu
⑳	1	CONTROL ROOM MONITOR WITH DL KEYPAD	22 lbs	204 btu
㉑	1	OPERATORS CONSOLE	22 lbs	546 btu
㉒	1	CA1000 WORKSTATION WITH TWO LCD MONITORS	50 lbs	1040 btu
㉓	1	BOLUS CHASE HANDSWITCH	2 lbs	
⑤①	6	VITALINQ SPEAKER		
⑤②	1	INNOVA MAIN DISCONNECT, REFERENCE JUNCTION POINT 'PDB' ON SHEET E1 FOR DETAILED DESCRIPTION.	326 lbs	1532 btu
⑤③	2	VITALINQ MICROPHONE		
⑤④	1	VITALINQ CONSOLE		

ENVIRONMENT

Ambient Operation Temperature: 55-75° (F)  
 Allowable Temperature Change: 15° (F) per hour  
 Humidity: 30%-70% non condensing  
 Allowable Humidity Change: 10% per hour  
 Max - Altitude: 8000 ft. above sea level

ROOM PLAN LOCATED ON PAGE 4-64

ITEM	QUANTITY	ITEM DESCRIPTION	WEIGHT	HEAT OUTPUT
<p>*****  <b>CUSTOMER/CONTRACTOR SUPPLIED AND INSTALLED ITEMS</b>            *****</p>				
60		MED GASES IN CEILING		
61		CUSTOMER SUPPLIED STORAGE CABINET		
62		CATHETER CABINETS		
63		LEAD APRON RACK		
64		COUNTER TOP WITH SINK, BASE AND WALL CABINETS		
65		COUNTER TOP FOR EQUIPMENT- MINIMUM DEPTH 30 in. OR ADDITIONAL SHELVING MAY BE REQUIRED. PROVIDE GROMMETED OPENINGS AS REQUIRED TO ROUTE INTERCONNECT CABLES TO RACEWAY BELOW COUNTERTOP.		
66		CONTROL WALL TO CEILING WITH LEAD GLASS WINDOW		
67		SHELF - CUSTOMER TO PROVIDE ADEQUATE WALL SUPPORT		
68		X-RAY ON WARNING LIGHT - AVAILABLE FROM GE SUPPLY CALL: 800-200-9760 GE CAT. NO. WXIABW-0F-XIU		
69		MINIMUM DOOR OPENING FOR EQUIPMENT DELIVERY IS 44 IN. W x 83 IN. H [1118mm x 2108mm], CONTINGENT ON A 96 IN. [2438mm] CORRIDOR WIDTH		
70		150-AMP LOCAL SERVICE DISCONNECT FOR LOCK-OUT/ TAG-OUT CAPABILITY. <MAY BE A FUSED DISCONNECT, CIRCUIT BREAKER OR SAFETY SWITCH. >		
71		COUNTERTOP WITH BASE AND WALL CABINETS		
90		X-RAY ROOM WARNING LIGHT/ROOM LIGHTING CONTROL PANEL REFERENCE JUNCTION POINT 'XRLC' ON SHEET 'E1' FOR DETAILED DESCRIPTION -CAT. NO. E4502SS FOR WARNING LIGHT & ROOM LIGHT CONTROL.		