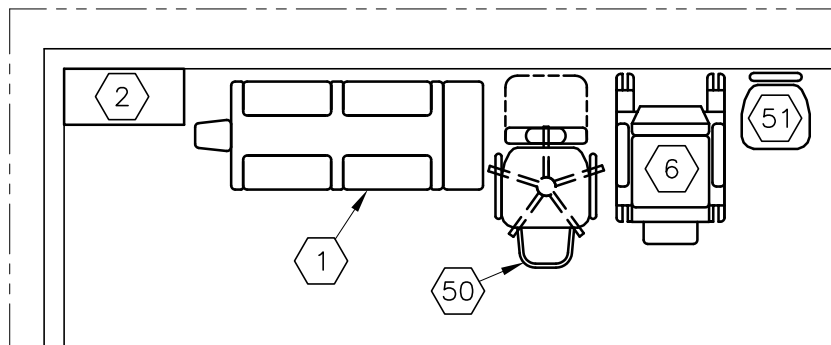
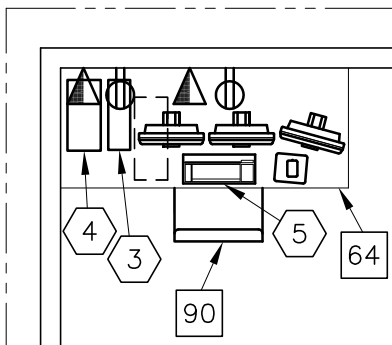
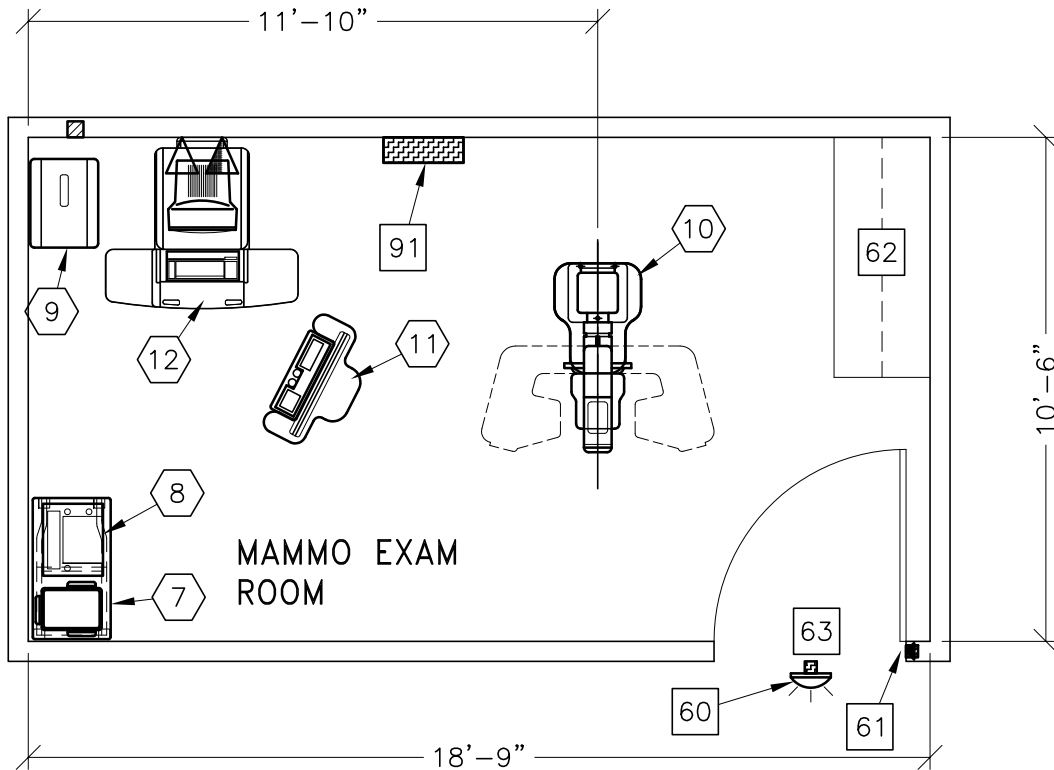


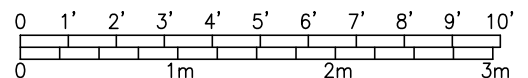


SENOGRAPHE 2000 D



NOTE: THIS IS A SUGGESTED LAYOUT BASED OFF OF GE HEALTHCARE PRE-INSTALL MANUAL. PLEASE CONTACT LOCAL PROJECT MANAGER OF INSTALLATION IF YOUR ROOM LAYOUT OR DIMENSIONS ARE DIFFERENT THAN THE LAYOUT SHOWN.

ROOM DIMENSIONS	LENGTH & WIDTH	CEILING HEIGHT
MINIMUM:	10'-0" x 12'-0" [3.5m x 3.7m]	8'-0" [2.4m]



SEE APPENDIX "A" FOR POWER SPECIFICATIONS

ROOM PLAN LOCATED ON PAGE 9-24

ITEM	QUANTITY	ITEM DESCRIPTION	WEIGHT	HEAT OUTPUT
①	1	DBI IMAGING TABLE MODEL 7407	315 lbs	
②	1	MAMMO ACCESSORIES STORAGE CABINET	48 lbs	
③	1	UPS SYSTEM	68 lbs	955 btu
④	1	CAD OPTION	33 lbs	955 btu
⑤	1	REVIEW WORKSTATION	134 lbs	2590 btu
⑥	1	MAMMOGRAPHY AND BIOPSY CHAIR	160 lbs	
⑦	1	ACCESSORY STORAGE RACK	110 lbs	
⑧	1	STEREOTIX CONSOLE	13 lbs	
⑨	1	SENOGRAPHE 2000D GENERATOR CABINET	352 lbs	
⑩	1	SENOGRAPHE MAMMOGRAPHY GANTRY	634 lbs	9754 btu
⑪	1	SENOGRAPHE CONTROL CONSOLE WITH RAD SHIELD SCREEN	154 lbs	
⑫	1	AWS CART	507 lbs	
⑤0	1	DELUXE RECLINING CHAIR <CAT NO E6315HB>		
⑤1	1	HYDRAULIC CHAIR		
***** CUSTOMER/CONTRACTOR SUPPLIED AND INSTALLED ITEMS *****				
⑥0		X-RAY ON WARNING LIGHT - AVAILABLE FROM GE SUPPLY CALL: 800-200-9760 GE CAT. NO. WXIABWW-OF-XIU-24(LED) <NEEDED ONLY IF REQUIRED BY STATE/LOCAL CODES>		
⑥1		DOOR LIMIT SWITCH <NEEDED ONLY IF REQUIRED BY STATE/LOCAL CODES>		
⑥2		COUNTER TOP WITH BASE AND WALL CABINETS		
⑥3		MINIMUM DOOR OPENING FOR EQUIPMENT DELIVERY IS 24 IN. W x 77 IN. H [610mm x 1956mm], CONTINGENT ON A 60 IN. [1524mm] CORRIDOR WIDTH		
⑥4		COUNTER TOP FOR EQUIPMENT		
⑨0		OPERATORS CHAIR		
⑨1		MAIN DISCONNECT CONTROL, WALL MOUNTED GEMS CAT. NO. E4502EE, 65 lbs. SEE DETAIL R4502EE.		

ENVIRONMENT

Ambient Operation Temperature: 59-95° F (15-35° C)
 Allowable Temperature Change: 15° F (10° C) per hour
 Humidity: 40-80 percent non condensing
 Allowable Humidity Change: 10 percent per hour
 Max - Altitude: 9840 ft. (2999 M) above sea level