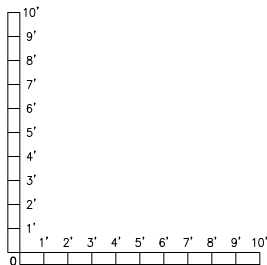
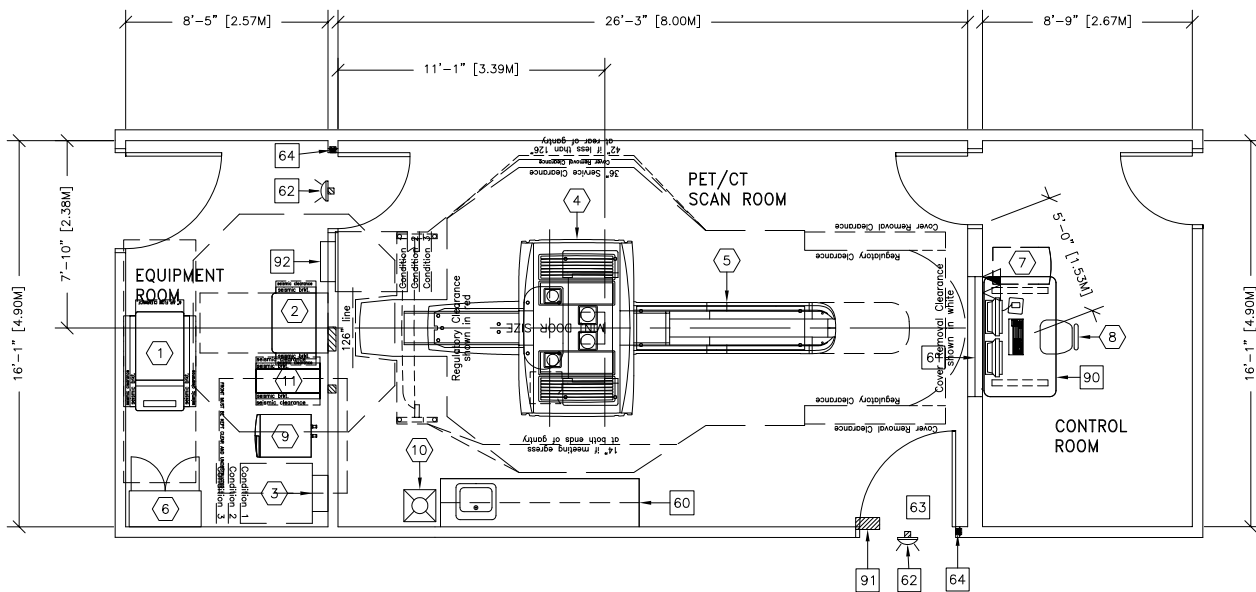




DISCOVERY MI PET/CT

RECOMMENDED EXAM ROOM
CEILING HEIGHT 9'-0" [2.74m]



IMPORTANT CUSTOMER READINESS ALERT:
THIS EQUIPMENT INVOLVES THE USE OF RADIOACTIVE ISOTOPES, INCLUDING THOSE SOURCES NECESSARY FOR EQUIPMENT CALIBRATION. APPROPRIATE REGULATORY COMPLIANCE AND LICENSING MUST BE ARRANGED BY THE CUSTOMER EARLY IN THE PLANNING PROCESS AND THEN DEMONSTRATED/AVAILABLE FOR EQUIPMENT INSTALLATION.

NOTE: DELIVERY PATH DOWN CORRIDORS FOR GANTRY'S AND TABLE MUST BE EVALUATED PRIOR TO CONSTRUCTION, AS 90 DEGREE TURNS REQUIRE SPECIFIC CORRIDOR WIDTH.

ROOM DIMENSIONS	LENGTH & WIDTH	CEILING HEIGHT
SCAN RM:	26'-5" X 14'-0" [8m X 4.2m]	9'-0" [2.7m]

ROOM PLAN LOCATED ON PAGE 12-32

ITEM	QUANTITY	ITEM DESCRIPTION	WEIGHT	HEAT OUTPUT
①	1	PARC 4	674 lbs	7897 btu
②	1	POWER DISTRIBUTION UNIT	813 lbs	3399 btu
③	1	POWER DISTRIBUTION BOX	88 lbs	
④	1	DISCOVERY MI PET/CT	7963 lbs	22867 btu
⑤	1	PATIENT TABLE W/500 LB PATIENT	2308 lbs	1023 btu
⑥	1	STORAGE CABINET <EMPTY CABINET WEIGHT>	90 lbs	
⑦	1	CONSOLE CABINET	158 lbs	
⑧	1	OPERATOR'S CHAIR		
⑨	1	CHILLER	319 lbs	20232 btu
⑩	1	ANNULUS PHANTOM SAFE	328 lbs	
⑪	1	UPS SYSTEM	619 lbs	5122 btu
***** CUSTOMER/CONTRACTOR SUPPLIED AND INSTALLED ITEMS *****				
60		COUNTER TOP WITH SINK, BASE AND WALL CABINETS		
61		LEAD GLASS WINDOW		
62		X-RAY ON WARNING LIGHT - AVAILABLE FROM GEXPRO CALL: 800-200-9760 GE CAT. NO. WXIABWW-0F-XIU		
63		MINIMUM DOOR OPENING FOR EQUIPMENT DELIVERY IS 55 IN. W x 80 IN. H [1397mm x 2032mm], CONTINGENT ON A 96 IN. [2438mm] CORRIDOR WIDTH		
64		DOOR LIMIT SWITCH <REQUIRED IN SOUTH CAROLINA, OTHERWISE NEEDED ONLY IF REQUIRED BY STATE/LOCAL CODES>		
90		WORKSPACE TABLE		
91		E4502RL WARNING LIGHT CONTROL OR EQUIVALENT MAX 24V CONTROLLER.		
92		MAIN DISCONNECT CONTROL GEMS CAT. NO. E4502AB 90 lbs., SEE DETAIL R4502AD. <IF A UPS IS NOT OR WILL NOT BE ORDERED, THE E4502AD CAN BE USED. >		

ENVIRONMENT

Ambient Operation Temperature: 64-79° F (18-26° C)
 Allowable Temperature Change: 5° F (3° C) per hour
 Humidity: 30-60 percent non condensing
 Allowable Humidity Change: 5 percent per hour
 Max - Altitude: 7875 ft. (2400 M) above sea level