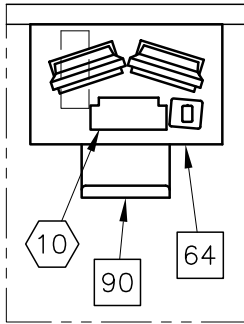




BRIVO NM 615

IMPORTANT CUSTOMER READINESS ALERT:

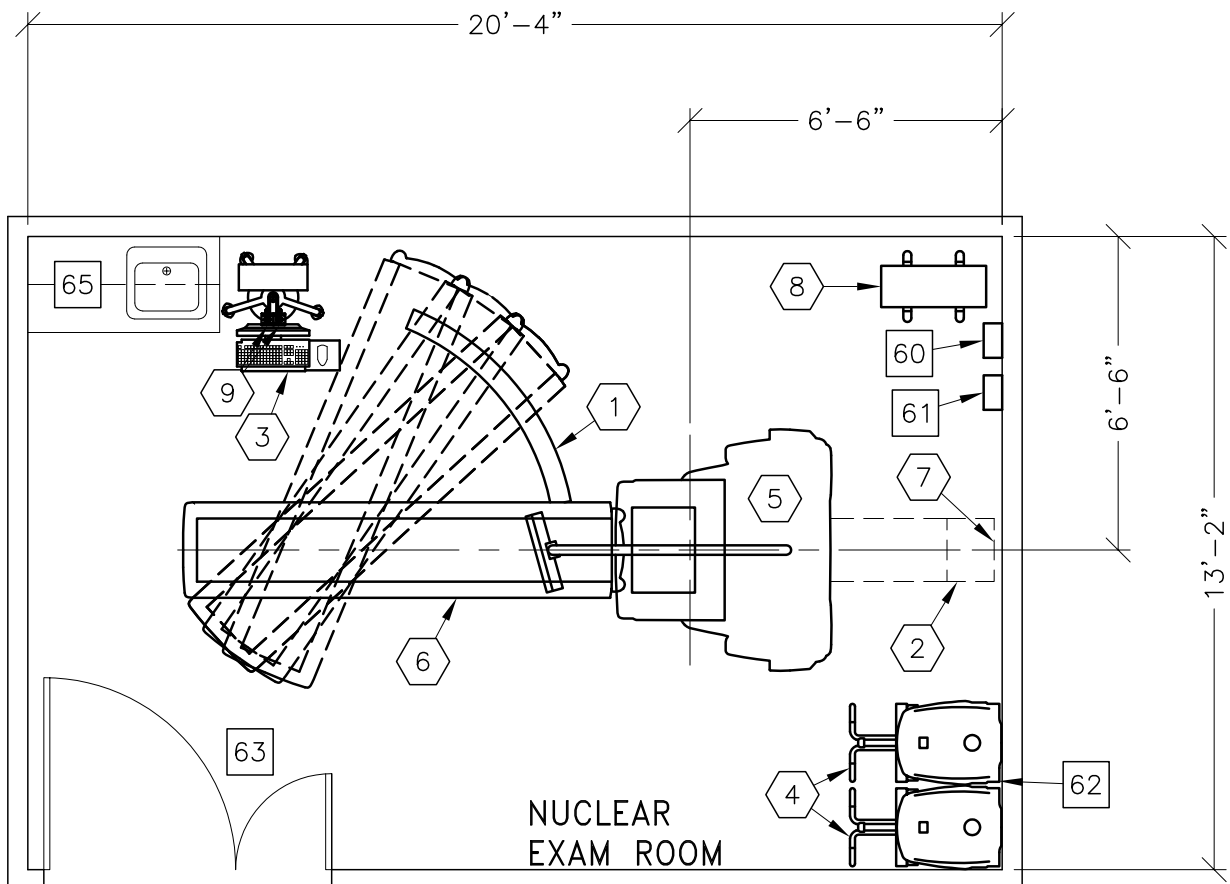
THIS EQUIPMENT INVOLVES THE USE OF RADIOACTIVE ISOTOPES, INCLUDING THOSE SOURCES NECESSARY FOR EQUIPMENT CALIBRATION. APPROPRIATE REGULATORY COMPLIANCE AND LICENSING MUST BE ARRANGED BY THE CUSTOMER EARLY IN THE PLANNING PROCESS AND THEN DEMONSTRATED/AVAILABLE FOR EQUIPMENT INSTALLATION.



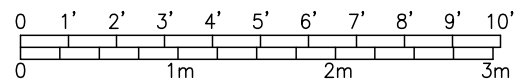
(VERIFY LOCATION)

| ASSIGNED BY THE HOSPITAL NET ADMIN IF CONNECTING TO THE HOSPITAL LAN | HOSTNAME | IP | AE TITLE | DICOM PORT |
|--|----------|----|----------|------------|
| ACQUISITION HOST | | | | |
| PROCESSING HOST | | | | |
| HARDCOPY HOST | | | | |
| LAN NET MASK | | | | |
| GATEWAY TO OTHER NETWORKS | | | | |
| OTHER | | | | |
| HUB OR SWITCH | | | | |

- PREPARE ADEQUATE NETWORK SOCKETS IN THE PROPER LOCATIONS TO SUPPORT ALL ACQUISITION, LOCAL AND REMOTE WORKSTATION.
- IT DEPARTMENT MUST ASSIGN DEDICATED IP ADDRESSES (NOT DHCP) NOTE THE ADDRESSES BELOW FOR THE ACQUISITION, LOCAL AND REMOTE WORKSTATIONS.
- PREPARE BROADBAND CONNECTIVITY LINE AND DEDICATED IP ADDRESSES FOR INSITE CONNECTIVITY.
- REFER TO TABLE ON A1 PAGE.



| ROOM DIMENSIONS | LENGTH & WIDTH | CEILING HEIGHT |
|-----------------|----------------------------------|----------------|
| MINIMUM: | Refer to Pre-Installation Manual | |



SEE APPENDIX "A" FOR POWER SPECIFICATIONS

ROOM PLAN LOCATED ON PAGE 7-82

| ITEM | QUANTITY | ITEM DESCRIPTION | WEIGHT | HEAT OUTPUT |
|--|----------|---|----------|-------------|
| ① | 1 | TABLE SWING PLATE FOR COLLIMATOR EXCHANGE | | |
| ② | 1 | TABLE EXTENDER | | |
| ③ | 1 | OPERATORS CONSOLE ON CART | 44 lbs | 255 btu |
| ④ | 2 | BRIVO NM 615 COLLIMATOR CART | 728 lbs | |
| ⑤ | 1 | BRIVO NM 615 GANTRY | 3516 lbs | 3412 btu |
| ⑥ | 1 | PATIENT TABLE | 859 lbs | 682 btu |
| ⑦ | 1 | LIMIT OF TABLE TRAVEL | | |
| ⑧ | 1 | 11 KVA UPS CABINET | 211 lbs | 3034 btu |
| ⑨ | 2 | EMO PUSHBUTTON | | |
| ⑩ | 1 | XELERIS WORKSTATION | 55 lbs | 255 btu |
| ***** CUSTOMER/CONTRACTOR SUPPLIED AND INSTALLED ITEMS ***** | | | | |
| 60 | | MAIN DISCONNECT CONTROL | | |
| 61 | | MAIN DISCONNECT CONTROL, GEXPRO CAT. NO. GEXNM630LV40A65KF, 14 lbs. | | |
| 62 | | OPTIONAL WALL PROTECTION FROM COLLIMATOR CART. ALSO, FINISHED FLOORING COULD BE SUBJECT TO DAMAGE DURING MOVEMENT AND BEING PARKED FOR A LONG PERIOD. SUFFICIENT FLOORING MUST BE USED TO PREVENT DAMAGE. | | |
| 63 | | MINIMUM DOOR OPENING FOR EQUIPMENT DELIVERY IS 55.1 IN. W x 86.8 IN. H [1399mm x 2204mm], CONTINGENT ON A 96 IN. [2438mm] CORRIDOR WIDTH | | |
| 64 | | TABLE | | |
| 65 | | COUNTER TOP WITH SINK, BASE AND WALL CABINETS | | |
| 90 | | OPERATORS CHAIR | | |

ENVIRONMENT

Ambient Operation Temperature: 64-79° F [18-26° C]
 Allowable Temperature Change: 5° F [3° C] per hour
 Humidity: 30-60 percent non condensing
 Allowable Humidity Change: 5 percent per hour
 Max - Altitude: 7875 FT. [2400 M]