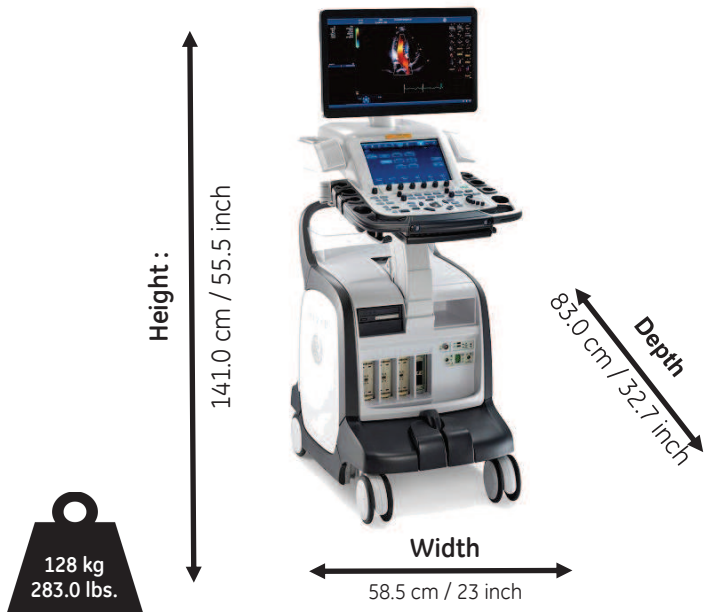


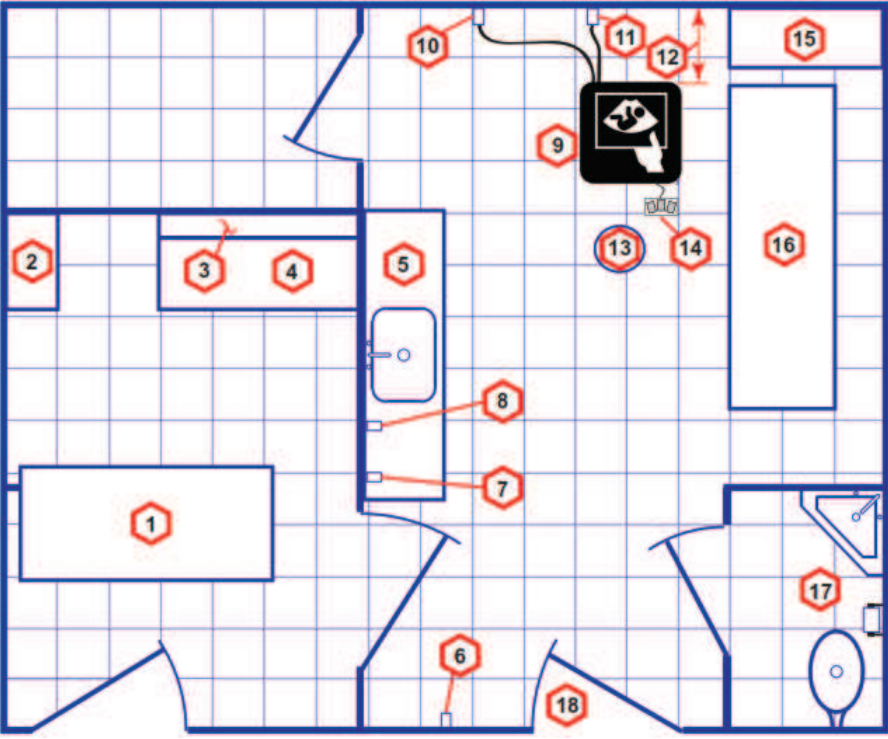
VIVID E80 & E90 & E95

Physical Dimensions and Weight (mm) :

Please Note: The picture may vary according to order configuration.



Recommended Ultrasound Room Layout 4.27 x 5.18 m (14 x 17 foot)



1. Secretaries or Doctors Desk
2. File Cabinet
3. Film Viewer
4. Counter Top
5. Counter Top and Sink with hot and cold water
6. Overhead Lights Dimmer - Dual Level Lighting (bright and dim)
7. Emergency Oxygen
8. Suction Line
9. Ultrasound system
10. Dedicated Power Outlet - Circuit Breaker protected and easily accessible
11. Network Interface
12. 457 mm (18 inches) distance of Ultrasound system from wall or objects
13. Stool
14. Footswitch
15. Storage for Linens and Equipment
16. Examination Table - 1930 x 610 mm (76 x 24 inches)
17. Lavatory and Dressing Room
18. Door - at least 762 mm (30 inches)

External Inputs and Outputs :



Environmental Requirements

Operating Temperature	10 to 35 C (50 to 95 F)
Operating Humidity	30 to 85 % rH, non-condensing
Heat Dissipation	2390 BTU/hour + 300 Btu for each person. Without on-board peripherals
Storage Temperature	-20 to 60 C (-4 to 140 F)
Storage Humidity	30% - 95 % rH, non-condensing
Lighting	Combination lighting system (dim/bright) is recommended. Keep in mind that lighting controls and dimmers can be a source of EMI which could degrade image quality.

Electrical Specifications

Voltage	100 -240 VAC +- %10 / 50, 60 Hz (+-2%) At 230 VAC -> up to 3A , at 100 VAC-> up to 7A
Power Consumption	700 W, 770 VA, including all on board peripherals.
Site Power Outlets	A dedicated AC power outlet must be within reach of the unit without extension cords 264 VAC, 50 Hz -> 13A, 60 Hz -> 12A 220 VAC, 50 Hz -> 9A , 60 Hz -> 11A 110 VAC, 50 Hz -> 5.5A, 60 Hz -> 6 A
Inrush current	90 VAC, 50 Hz -> 6A, 60 Hz -> 5A
Power outage may occur	Requires a dedicated single branch circuit. To avoid circuit overload and possible loss of critical care equipment, make sure you DO NOT have any other equipment operating on the same circuit.

Please Note: For more information please refer to the product's service & user manuals.