

Vivid T8 Cardiovascular Ultrasound

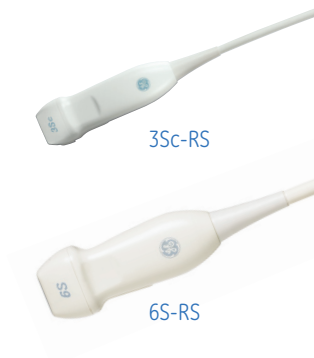
Transducer guide



Comprehensive cardiovascular scanning.

Vivid™ T8 features a wide range of applications that help increase the system's versatility. The system's transducers feature a miniaturized RS connector, that helps maximize ease of use and patient comfort. A lightweight transducer cable helps minimize strain for the user, facilitating transducer placement.

Sector



Cat #	Main Applications	Description	Footprint	Biopsy Guide	Scanner Frequency Range	Field of View	Depth of Field
H45041DL	Adult Cardiac, Abdomen, Pediatric, Renal, Transcranial	Phased Array	18 x 24 mm	Multi-angle disposable, with a reuseable bracket	1.3 - 4.0 MHz	90°	30 cm
H45021RP	Pediatric Cardiac, Neonatal Head, Fetal Heart, Abdomen	Phased Array	17 x 23 mm		2.7 - 8.0 MHz	90°	16 cm

Transesophageal



Cat #	Main Applications	Description	Footprint	Biopsy Guide	Scanner Frequency Range	Field of View	Depth of Field
H45551ZE	Cardiac, Coronary	TEE	12 x 14 mm with length of 45 mm		2.9 - 8.0 MHz	90°	20 cm



Linear



Cat #	Main Applications	Description	Footprint	Biopsy Guide	Scanner Frequency Range	Field of View	Depth of Field
H48062AC	Carotid, Thyroid, LEA, LEV, UEA, Small Parts, Abdominal, Peripheral Vascular, Musculoskeletal Conventional	Linear Array	47.07 x 11.35 mm	Multi-angle disposable, with a reuseable bracket	6.0 - 13.0 MHz	38 mm	16 cm

Convex



Cat #	Main Applications	Description	Footprint	Biopsy Guide	Scanner Frequency Range	Field of View	Depth of Field
H4000SR	Abdomen, Pediatric, OB, GYN, Renal, Prostate	Curved Array	17 x 65 mm	Multi-angle disposable, with a reuseable bracket	1.8 - 6.0 MHz	58°	30 cm
H40402LS	Pediatric Abdominal, Neonatal Head	Curved Array	12 x 21 mm		4.0 - 11.0 MHz	128°	14 cm

Doppler



Cat #	Main Applications	Description	Footprint	Biopsy Guide	Scanner Frequency Range	Field of View	Depth of Field
H45551CA	Cardiac	Pencil Probe	16 mm		2.0 MHz	N/A	N/A

Special



Cat #	Main Applications	Description	Footprint	Biopsy Guide	Scanner Frequency Range	Field of View	Depth of Field
H40402LN	Fetal Echo, Follicle, GYN, OB, Prostate, Transvaginal, Transrectal	Endo Micro Convex	23 x 23 mm	Fixed-angle, disposable, or reusable bracket	4.0 - 11.0 MHz	128°	14 cm

About GE Healthcare

GE Healthcare provides transformational medical technologies and services to meet the demand for increased access, enhanced quality and more affordable healthcare around the world. GE (NYSE: GE) works on things that matter - great people and technologies taking on tough challenges. From medical imaging, software & IT, patient monitoring and diagnostics to drug discovery, biopharmaceutical manufacturing technologies and performance improvement solutions, GE Healthcare helps medical professionals deliver great healthcare to their patients.

GE Healthcare
9900 Innovation Drive
Wauwatosa, WI 53226
USA
www.gehealthcare.com

Note: Some applications depend on the availability of certain options.
Note: Some of the probes, options or features described in this data sheet may NOT be available for sale in all countries.

©2014 General Electric Company – All rights reserved.

General Electric Company reserves the right to make changes in specifications and features shown herein, or discontinue the product described at any time without notice or obligation.

GE, GE Monogram, and Vivid are trademarks of General Electric Company or one of its subsidiaries.

GE Medical Systems Ultrasound & Primary Care Diagnostics, LLC, a General Electric Company, doing business as GE Healthcare.



imagination at work