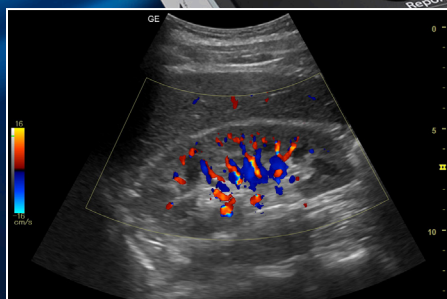


Versana Active

Portable ultrasound for urology



Versana Active™ delivers the imaging capability of a console in a hand-carried, lightweight system – bringing the agility of a laptop unit with the capability of attaching to a cart.



Color flow for renal vasculature



Virtual convex provides a wider field of view in the far field



Excellent contrast resolution is seen utilizing the 4C transducer while scanning the bladder

Durability for demanding usage day after day

Clinical and product **education***

Flexible financing options*

Expert service and technical support

Access to Versana Club – a network of Versana users and tutorials

5-year warranty for peace of mind**

CAPABLE, ADAPTABLE SYSTEM FOR UROLOGY



Use **Scan Coach** 3D animation, anatomic illustrations and reference images to find the correct scan plane



Easily calculate volumes – including residual urine volume – with **AutoBladder**



Create custom exam protocols and standardized workflow with **Scan Assistant**



Easily compare current and prior images with the **Follow-Up Tool**



Use **templates** to create custom reports to suit global or regional standards



Easily add **voice comments** to exams



Perpetual battery life by design



Intelligent automated productivity tools including **Whizz** dynamic image tuning



Scan with **B-Flow**™ to get an intuitive representation of hemodynamics



Enhanced ergonomics with **advanced cart**

** Local educational offerings and financing options may vary according to regions. Please check with your local GE Healthcare representative.*

*** Warranty offering may vary by country or region. Please check with your GE Healthcare Representative.*

© 2020 General Electric Company – All rights reserved.

GE Healthcare reserves the right to make changes in specifications and features shown herein, or discontinue the product described at any time without notice or obligation. Contact your GE Healthcare representative for the most current information. GE, the GE Monogram, Versana Active and B-Flow are trademarks of General Electric Company. GE Healthcare, a division of General Electric Company. GE Medical Systems, Inc., doing business as GE Healthcare.

September 2020
JB00154US

