

Venue™ Family Ultrasound Systems*

Made for Musculoskeletal Care



*Venue Family, as referenced herein, includes Venue, Venue Go™, and Venue Fit™ systems

Simple. Fast. Precise.

Be there for patients eager to heal and recover

You're invested in helping patients with musculoskeletal (MSK) injuries quickly get back to previous routines. We've designed the Venue Family of ultrasound systems with features like the MSK tool kit to help you perform fast and accurate assessments so you can confidently develop treatment plans. Venue Family systems help you:

- Diagnose injuries with precision
- Guide treatment to the correct location with technology that aids in needle placement
- Help monitor patient progress and response to therapy with clear and effective tools

Whether you're looking for a cart-based system or an adaptable one that can go from cart to table, there is a versatile, robust, easy-to-use Venue Family system made for you.



Make more confident decisions

You can confidently rely on Venue Family ultrasound systems wherever you perform MSK evaluations. Easy-to-use clinical and workflow tools, and built-in learning help users of all experience levels confidently conduct patient exams and provide treatment.

Accurately guide and visualize injections with Needle Recognition

With precision needle guidance, the system highlights the needle. This technology helps improve both patient and provider experience.

Accelerate learning with Scribble

Fast-track training by leveraging a touch-operated pointer and free-drawing capabilities, visible on an external monitor or shared screen.

Detect and track nerve landmark with cNerve

Useful in evaluating peripheral nerve conditions, cNerve, an AI-based tool, helps you detect and track nerve landmark during live scanning or while reviewing a stored clip.

Visualize slower blood flows with Power Doppler Imaging (PDI+)

This Color Flow mapping technique focuses on the signal coming from the flow—enabling improved visualization of slower blood flows, like those found in wrists, ankles, hands, and feet.

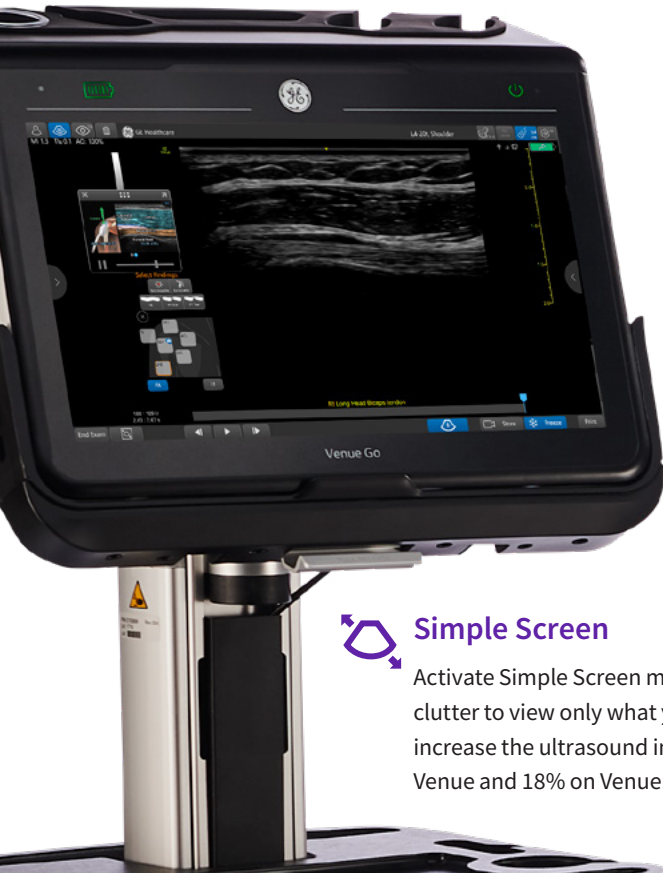
Easily control multiple parameters

With our button probes, you can perform procedures while controlling multiple parameters of the system from the probe without breaking the sterile field. Needle procedures that once required two people can now be done with one.



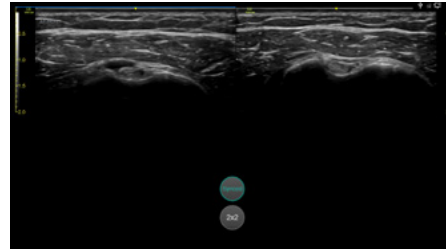
Keep moving with a simplified workflow

Venue Family systems help eliminate busywork at the Point of Care. Easy documentation and protocol management tools reduce keystrokes, facilitate exam comparison, and streamline image organization for efficient review.



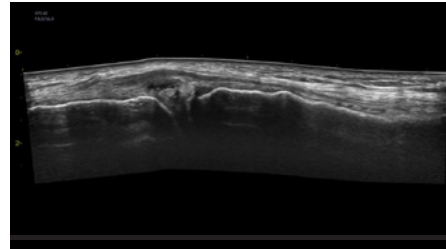
Simple Screen

Activate Simple Screen mode to remove clutter to view only what you want and increase the ultrasound image by 39% on Venue and 18% on Venue Go and Venue Fit.¹



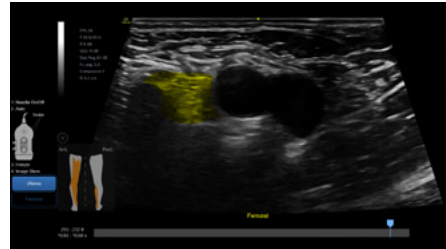
Follow Up

Automatically recalls parameter settings from a previous exam, including comments and body patterns. Also supports monitoring patient treatment response over time, with a side-by-side view of historical and new images.



Venue View

By constructing a panoramic image from individual frames, Venue View allows you to view up to 60 cm* of anatomy with anatomical relationships in one view.



cNerve

During the scouting phase, use cNerve to identify the nerve landmark and see it highlighted on the image. This helps detect and track the nerve in 99% of cases while scanning or reviewing a stored clip²



Virtual Convex

Provides a wider field of view so you can visualize larger anatomy structures in a single scan and aims to enhance image quality on linear probes.



MSK Tool Kit

Shoulder Diagram Simplifies shoulder exam documentation and follow-up by fast-tracking image labeling and image storage. Also facilitates patient therapy response by giving you the whole picture over treatment time. **Reference image** provides anatomy markups to guide novice users in scanning the correct anatomy. **Bilateral mode** helps you to view the opposite side of the same zone for comparison.

See what you need to see

A full array of high-frequency imaging probes enable clear assessment of deep and shallow anatomy. Available probes include:

L4-20t-RS

Supports high-frequency imaging of superficial structures while also being able to penetrate deeper anatomy without compromising imaging quality. With four configurable buttons.



L4-12t-RS

A wide-band linear array for vascular, small parts, superficial, and other MSK images. With four configurable buttons.



L10-22-RS

A high-frequency linear array for MSK imaging.



9L-RS

A linear array specifically designed to diagnose peripheral vascular, vascular access, and musculoskeletal applications.



C1-5-RS

A curved array supporting imaging of mid to deep structures.



L8-18i-RS

High frequency, hockey stick design for superficial structures in tight spaces.



Explore all ultrasound transducers [→](#)

Made for your Point of Care

From bedside to tight spaces, our systems can go from cart to table to wall to accommodate procedural environments.



Easy to reach probes

Smart cable management puts probes safely up top and cables out of the way and off the floor



Easy to clean

Smooth and seamless surface supports infection control efforts



Reliable support

The Venue Family is backed by a multi-year warranty³



Long operation

Batteries can provide active scan times of up to four hours



Robust

A durable screen, bumpers and multi-purpose handles protect against bumps, bangs, and slashes

Easy to move

Sleek footprint and big wheels for nimble maneuvering.



3 systems. 1 shared platform.

Wherever you perform musculoskeletal ultrasound, there is a Venue system designed to meet your needs. Learn more about the members of the Venue Family with this side-by-side comparison.



	Venue	Venue Go	Venue Fit
Portability	Adjustable cart base	Unit detaches from adjustable cart and allows for use on table top or standard VESA® connection	Unit detaches from adjustable cart and allows for use with kickstand or standard VESA connection
Battery life (scan time)	Up to 4 hours	Up to 2 hours	Up to 1 hour
Monitor size	19-in. multi-touch, high-resolution color LCD	15.6-in. multi-touch, high-resolution color LCD	14-in. multi-touch, high-resolution color LCD
Ratio	5:4	16:9	16:9
Active probe ports	4	3	2
Footprint of cart	19.4-in. wide x 21.4-in. deep	19.9-in. wide x 18.9-in. deep	18.7-in. wide x 18.7-in. deep
Weight of unit (off cart)	-	13.9 lbs.	12 lbs.



Learn more about the Venue Family
at work in musculoskeletal care



About GE HealthCare

GE HealthCare is a leading global medical technology, pharmaceutical diagnostics, and digital solutions innovator, dedicated to providing integrated solutions, services, and data analytics to make hospitals more efficient, clinicians more effective, therapies more precise, and patients healthier and happier. Serving patients and providers for more than 100 years, GE HealthCare is advancing personalized, connected, and compassionate care, while simplifying the patient's journey across the care pathway. Together our Imaging, Ultrasound, Patient Care Solutions, and Pharmaceutical Diagnostics businesses help improve patient care from prevention and screening, to diagnosis, treatment, therapy, and monitoring. We are an \$18 billion business with 51,000 employees working to create a world where healthcare has no limits.

Follow us on [Facebook](#), [LinkedIn](#), [Twitter](#), [Instagram](#) and [Insights](#) for the latest news, or visit our website [gehealthcare.com](https://www.gehealthcare.com) for more information.

References:

* Supporting evidence in DOC2374294 - Venue R3 DRS Venue-View VRS Rev 5 (Test 19776)

1. Supporting evidence for Venue (at 39% larger) and Venue Go (at 18% larger) is documented in DOC2391130. Supporting evidence for Venue Fit (at 18% larger) is documented in DOC2454794.
2. Claims based on data collected in cNerve reading study and based on study done Identifying anatomical structures on ultrasound: assistive artificial intelligence in ultrasound-guided regional anesthesia—27 November 2020 Synopsis. Supporting study documentation:
 - cNerve Study May 2022.docx
 - cNerve study Results.xlsx
3. Please consult your local GE HealthCare representative for warranty term information in your region.

GE HealthCare reserves the right to make changes in specifications and features shown herein, or discontinue the product described at any time without notice or obligation.

© 2023 GE HealthCare. Venue, Venue Go, and Venue Fit are trademarks of GE HealthCare. VESA is a trademark of the Video Electronics Standards Association. GE is a trademark of General Electric Company used under trademark license.

Venue Family R4 rev1
May 2023
JB20297XX