



Venue™ Ultrasound System

Made for your Point of Care

Simple. Fast. Precise.

For your Point of Care

Venue systems are built for a wide range of environments. Inspired by physician needs, these systems are robustly designed for maximum flexibility, adaptability, mobility, and usability.



Easy to reach probes

Smart cable management puts probes safely up top and cables out of the way and off the floor



Long-lasting power

Batteries can provide scan times of up to four hours



Big and clear

See its large 19-inch screen from across the room



Easy to clean

Smooth and seamless surface supports infection control efforts



Our most robust system

A fully featured, multi-purpose ultrasound system made for your Point of Care



At your side

Cart-based with a small footprint, it goes where you go



Reliable support

Venue is backed by a multi-year warranty⁶

Advanced transducers designed specifically for your Point of Care

Powered by cSound™, our durable ultrasound transducers provide exceptional image quality with feature designs that help enhance ease of use, ergonomics and patient comfort. From critical care, perioperative, and MSK to pediatrics and NICU, our transducers are available in a broad range of types that are designed to meet the needs of your specialty.



[Explore all available Transducers](#)



Let's simplify the complex

Venue ultrasound systems are built specifically for Point of Care medicine across the facility. By streamlining workflow, they help users of different departments and experience levels confidently conduct patient exams.



AI-enabled tools support your confident decision-making

AI-resources based on synthesized data and proprietary algorithms simplify manual processes such as measuring and finding B-lines, helping ensure consistency from user to user.



Documentation tools streamline exams

Protocol management and easy documentation tools help users conquer busywork by readily providing the information they need, reducing the need to manually type findings.



Broad probe portfolio for exceptional image quality

Venue Fit features a wide variety of linear, curved, and cardiac transducers that are designed for a multitude of specialties and interchangeable* across systems.



A common platform ensures a consistent experience

All systems are built on one platform with the same interface to ensure familiarity and simplify training across your facility.



Built-in teaching assistance facilitates learning

Scribble assists training with a touch-operated pointer and free-drawing capabilities that can also be visible on an external monitor or shared screen. The **MSK Tool Kit** provides reference images to make documentation easy and guides novice users in scanning the correct anatomy.



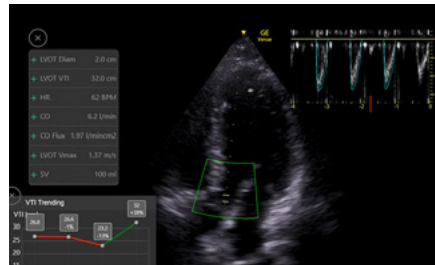
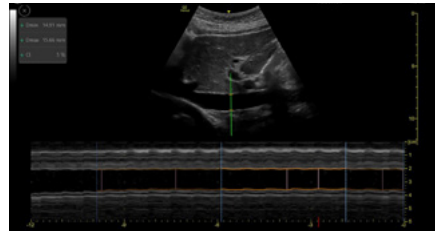
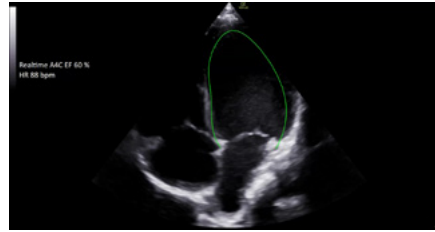
Touch, pinch, swipe

No buttons. No knobs. A familiar touch screen with a simple, clear and intuitive interface works even with gloves or screen covers.



Helping you work smarter, not harder, with AI-proven tools

Leveraging data and proprietary algorithms, Venue systems include AI-based tools to help increase exam efficiency and user consistency.



Real-time EF

Enables continuous calculation of real-time ejection fraction without having to conduct an ECG. Capture instant, precise results—within +/- 10 points of experts in 86% of cases¹



Shock toolkit

Facilitates shock evaluation by focusing on key organs linked to patient status: the heart, lungs, and inferior vena cava.

Associated rapid assessments:

- **Auto IVC**
Measure IVC collapsibility or distensibility accurately and automatically. **Equivalent to an expert user's ability 87% of the time²**
- **Auto VTI**
The VTI trending function helps clinicians quickly visualize the trend so the next course of action can be determined. **Experience up to 82% time savings³**
- **Auto B-Lines**
Calculate overall lung score in one step. You can also use it with Lung Sweep to highlight B-lines and display the frame with the most B-lines per rib space. **As highly reliable as visual counting⁴**



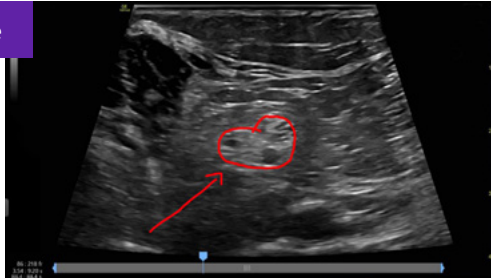
cNerve

During the scouting phase, use cNerve to identify the nerve landmark and see it highlighted on the image. **Helps detect and track the nerve in 99% of cases while scanning or reviewing a stored clip⁵**

Simplify your workflow

Everyone is looking to eliminate busywork at the Point of Care, and that's what Venue systems do. Easy documentation and protocol management tools reduce keystrokes, facilitate exam comparison, and streamline image organization for efficient review.

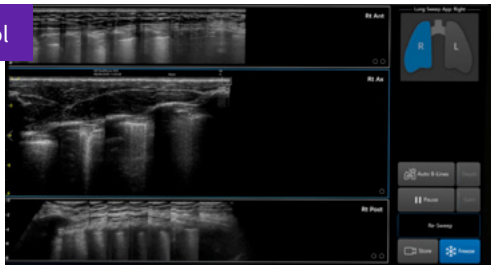
Scribble



Scribble

Assists training with a touch-operated pointer and free-drawing capabilities.

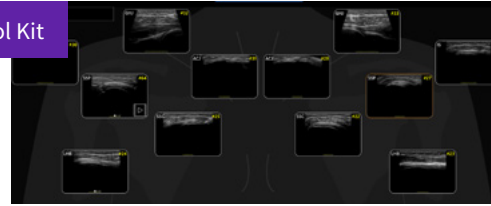
Auto Tool



Lung Sweep

Visualizes a dynamic panoramic view of the entire lung.

MSK Tool Kit



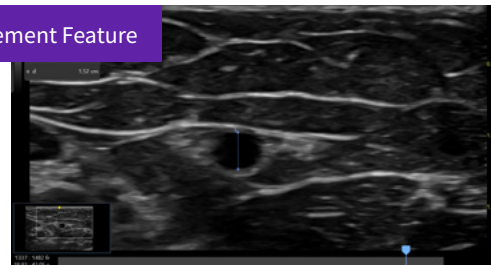
MSK Tool Kit

Shoulder Diagram simplifies shoulder exam documentation and follow-up by fast-tracking image labeling and image storage. Also facilitates patient therapy response by giving you the whole picture over treatment time.

Reference image provides anatomy markups to guide novice users in scanning the correct anatomy.

Bilateral mode helps you to view the opposite side of the same zone for comparison.

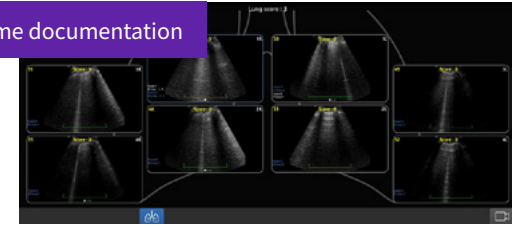
Measurement Feature



Catheter to Vessel Ratio

Supports you in selecting the appropriate sized catheter based on vessel diameter.

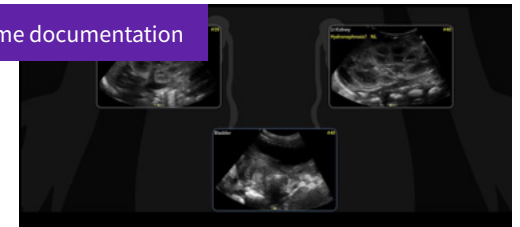
Real-time documentation



Lung Diagram

A single view diagram of anatomical lung segments with one click image storing. Enables calculation of an overall Lung Ultrasound Score to help response to therapy.

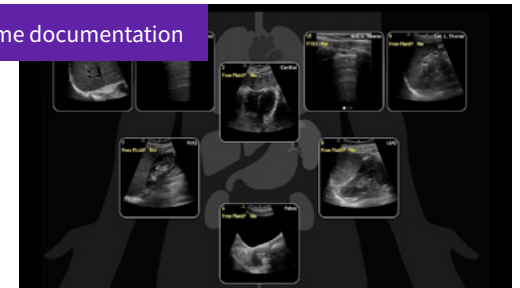
Real-time documentation



Renal Diagram

Simplifies hydronephrosis documentation and follow-up. Minimizes typing with labeling tools.

Real-time documentation



eFAST Diagram

Allows users to assess and document patient status, from internal bleeding to pneumothorax, with up to an 80% reduction in keystrokes?

Made for your Point of Care

Inspired by the needs of Point of Care physicians, Venue supports a wide range of environments.



Critical Care

AI-enabled tools, an intuitive interface, a compact footprint, and large screens optimize Venue for your quick decision-making and bedside interventional procedures

[Learn more](#) →



Emergency Medicine

A straightforward design, AI-enabled Auto Tools and nimble maneuvering help emergency room physicians quickly triage patients and determine care pathways.

[Learn more](#) →



Musculoskeletal

Clear and effective tools help MSK practitioners assess tendons, muscles and joints and manage patient progress during a course of treatment.

[Learn more](#) →



NICU & Pediatrics

The Venue AI-enabled tools for pediatrics[^] enables fast and confident diagnostic scans without ionizing radiation for evaluation of the tiniest patients.

[Learn more](#) →



Perioperative Anesthesia

Simple, fast and precise tools support your clinical decision making so you can provide the best clinical outcomes for your perioperative patients.

[Learn more](#) →



Regional Anesthesia

Excellent image quality along with the tools needed to view the nerve, guide the needle, and ensure proper solution delivery, helping you provide the best clinical outcomes for your patients.

[Learn more](#) →

Designed for security

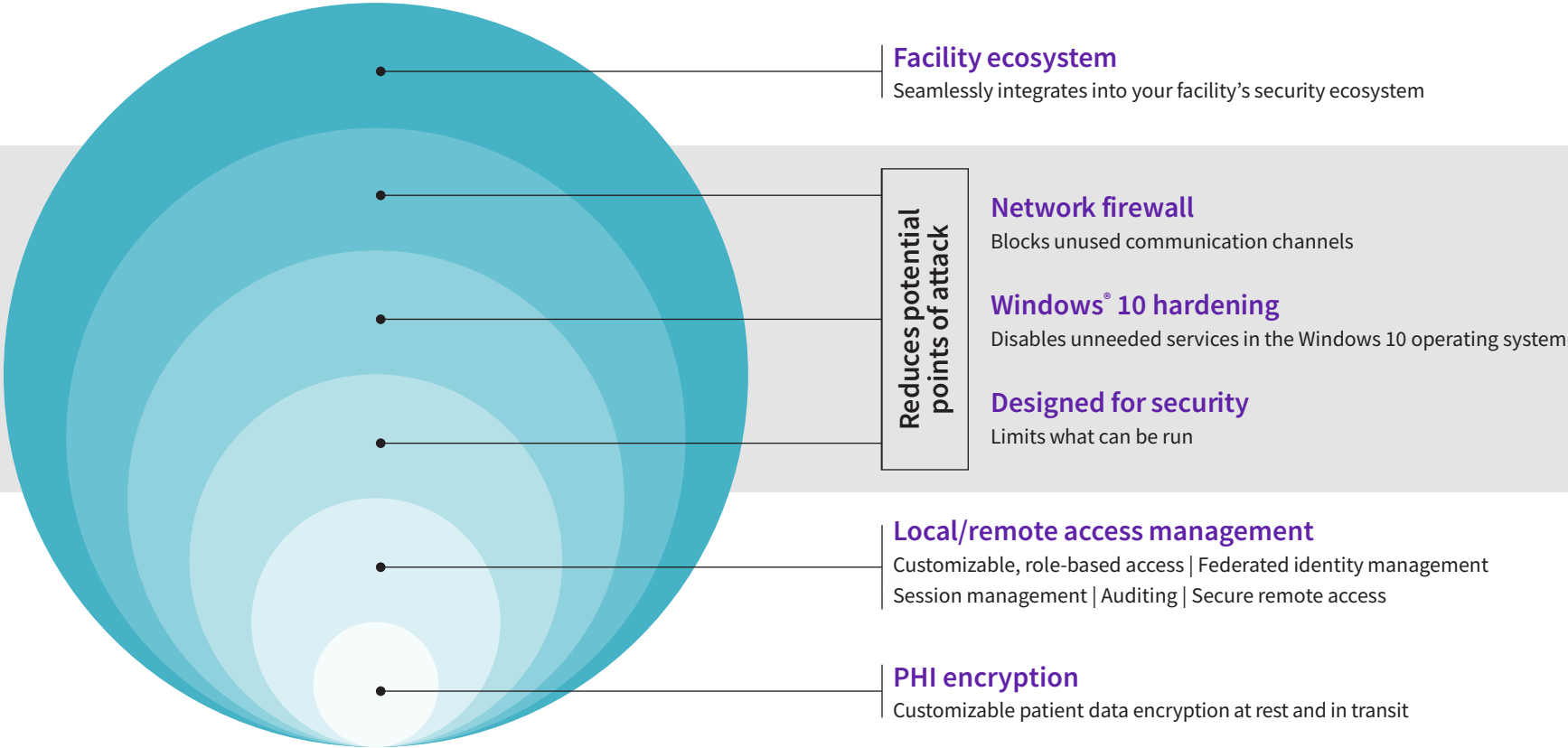
SonoDefense is GE HealthCare’s multi-layer strategic approach to cybersecurity and patient data privacy for ultrasound, and designed to:

- Keep the ultrasound machine safe and functional in the face of cyberthreats
- Protect patient data on the machine from unauthorized access
- Enable you to successfully implement HIPAA and security policies, while still managing productive daily workflows

Defense-in-depth strategy

SonoDefense is designed for maximum security protection with a defense-in-depth strategy that incorporates security controls deployed in multiple layers. This approach enhances security by protecting the system against any particular attack using several independent methods.

SonoDefense





Learn more about the Venue [→](#)

Venue is part of the Venue Family of Point of Care ultrasound systems.

To learn more about the Venue Family, [click here](#).

About GE HealthCare

GE HealthCare is a leading global medical technology, pharmaceutical diagnostics, and digital solutions innovator, dedicated to providing integrated solutions, services, and data analytics to make hospitals more efficient, clinicians more effective, therapies more precise, and patients healthier and happier. Serving patients and providers for more than 100 years, GE HealthCare is advancing personalized, connected, and compassionate care, while simplifying the patient's journey across the care pathway. Together our Imaging, Ultrasound, Patient Care Solutions, and Pharmaceutical Diagnostics businesses help improve patient care from prevention and screening, to diagnosis, treatment, therapy, and monitoring. We are an \$18 billion business with 51,000 employees working to create a world where healthcare has no limits.

Follow us on [Facebook](#), [LinkedIn](#), [Twitter](#), [Instagram](#) and [Insights](#) for the latest news, or visit our website [gehealthcare.com](https://www.gehealthcare.com) for more information.

References:

1. Venue and Venue Go R3 technical claims document (DOC2391130) Venue Fit technical claims document (DOC2454794) 5. In one study, the IVC measures were equivalent to an expert user's ability 87% of the time for minimal diameters and 92% for maximal diameters. Venue Go R2 Technical Product Claims Document DOC2199650.
2. Supporting evidence for Venue and Venue Go is documented in DOC2391130. Supporting evidence for Venue Fit is documented in DOC2454794.
3. Auto VTI can provide up to 90% reduction in keystrokes and take up to 82% less time than manual method calculations, as performed by experts. Based on GE Internal study with Venue Go DOC2254811.
4. A recent study found the Auto B-lines tool to be comparable to and as highly reliable as visual counting performed by experts. Short J, Acebes C, Rodriguez-de-Lema G, et al. Visual versus automatic ultrasound scoring of lung B-lines: reliability and consistency between systems. Med Ultrasonography 2019, Vol 21 no1, 45049 DOI: 10.11152/mu-1885.
5. Claims based on reading study- DOC2725435 Venue family R4 cNerve reading study.
6. Please consult your local GE HealthCare representative for warranty term information in your region.

*L12n-RS and M5Sc-RS are only available on Venue.

^Excluding neonates

GE HealthCare reserves the right to make changes in specifications and features shown herein, or discontinue the product described at any time without notice or obligation.

© 2023 GE HealthCare. Venue, Venue Go, and Venue Fit are trademarks of GE HealthCare. VESA is a trademark of the Video Electronics Standards Association. GE is a trademark of General Electric Company used under trademark license.

Venue Family R4 rev1
May 2023
JB20302XX