



GE HealthCare

Vivid™ T9

Ultra Edition


Your patients rely on you.

You can rely on us.




Today's challenges

Increasing demand, coupled with limited cardiology staff, results in additional workload challenges for the entire medical community.

 **17 million**
people died from CVDs
in 2019¹

 **1 in 4**
cardiologists state they
are burned out²

 **>10%**
increase in Ischemic Heart
Disease (IHD) alone by 2030³

 **~20%**
of sonographers are leaving
the profession or taking
premature retirement⁴

 **~230 million**
annual echo exams
performed globally⁵

 **x2**
Shortage of health workers is
set to double⁶



Your patients rely on you. You can rely on us.

Patient care isn't just a job for you. It's a calling. A mission.

Of late, that mission has changed. Increased workloads, fewer skilled staff and increased demands on your time, resources and expertise are now the norm.

Getting the right images under this pressure is challenging and you have no intention of sacrificing quality in your practice when so much is at stake.

The Vivid T9 cardiovascular ultrasound has been designed to meet today's challenges. To allow more quality time with patients, increase diagnostic confidence and reduce inter-operator variability – all at a price point accessible for private practices.

Because your patients rely on you, you can rely on us.

Your expertise. Our innovations.

Building on a history of advancements in cardiac patient care, GE HealthCare has been a true pioneer introducing exceptional technologies, such as Color Doppler systems (1986), 2D and AFI Speckle Tracking (2005).

Discover the latest innovative technologies that continue to push the technical capabilities for the benefit of you and your patients.

2021

- AutoEF with optional ECG

2022

- Easy AFI LV
- Easy AutoEF
- M5Sc-RS XDclear™ Probe
- L4-20t-RS Single Crystal Linear Probe

2024 →

- Clarity+ for general imaging**
- One-click QuickApp and AutoEF shortcuts**
- DICOM® encapsulated PDF report**



Vivid T9 Ultra Edition

Benefit from a wide range of clinical applications and image quality improvements for your cardiovascular practice.

Extended warranty⁹

Designed for your busy practice.

The Vivid T9 Ultra Edition* provides reliable and ergonomic design, powered with AI applications for extreme productivity and reduced inter-operator variability, without compromising quality of care.



Enhanced versatility

- Superb image quality beyond adult echo. Vascular, abdominal, and soft tissue imaging optimized with Clarity+.
- QuickApp shortcuts enable an easy, one-click transition between deep or superficial scanning, high or low blood flow visualization.

Extreme productivity

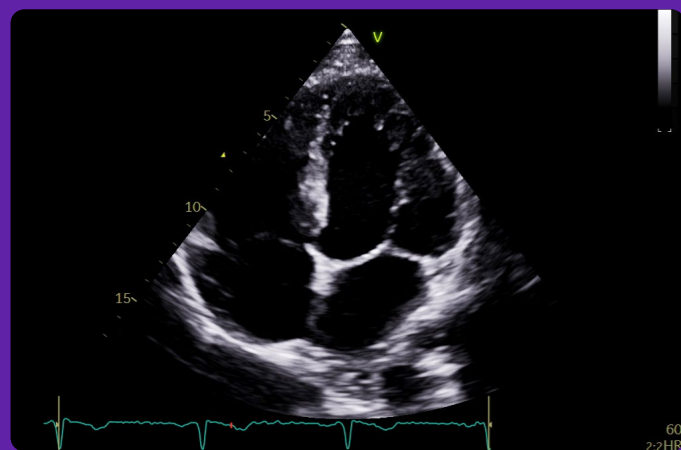
- Ejection Fraction results with one click using Easy AutoEF.⁷ Strain measurements in a single click and less than 15 seconds with Easy AFI LV.⁸
- A new AutoEF shortcut saves clicks and encourages use of AutoEF, with or without ECG.

Flexible exam reporting

- DICOM encapsulated PDF report for users familiar with the Vivid reporting experience and requiring DICOM storage.

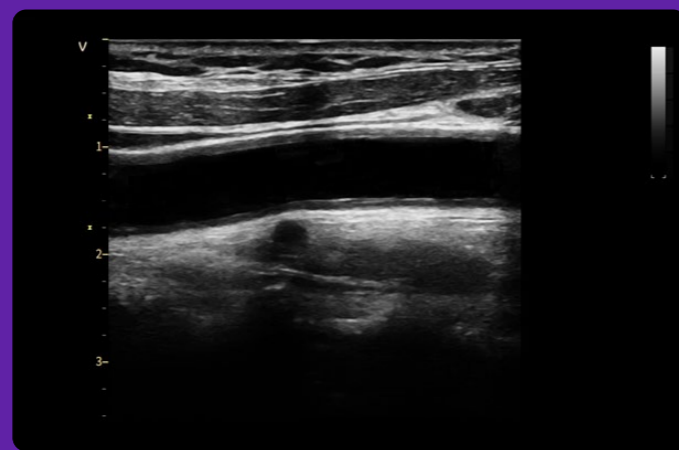
Your vision. Our superb images.

The diagnoses and treatment plans for your patients require a clear view of their condition. Exceptional image quality is not just a wish, it's a requirement.



Penetration QuickApp
Helps improve visibility

Optimize penetration in technically difficult studies with one click.



L4-20t-RS Single Crystal Linear Probe
Clear imaging with convenient control

Four configurable buttons allow you to conveniently perform essential functions like freeze, store, mode switch and more, at bedside, away from the scanner.

“With Vivid T9 you can achieve an accurate diagnosis with confidence in any cardiac pathology.”¹¹

– Dr. Angela López Sainz
Cardiologist
Hospital Clinic in Barcelona

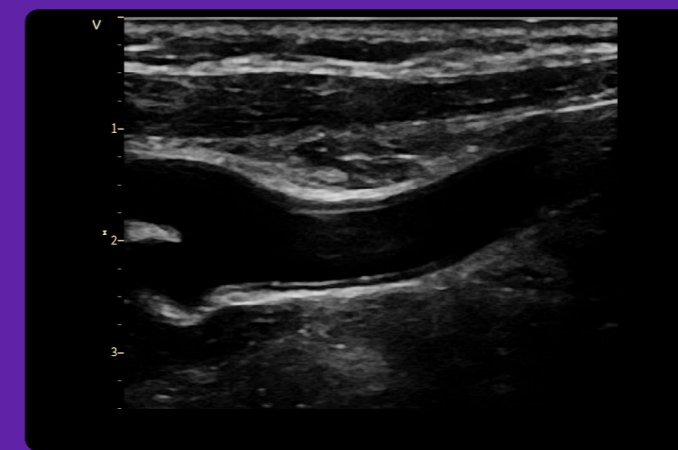


10-15% of echo exams result in sub-optimal images¹⁰

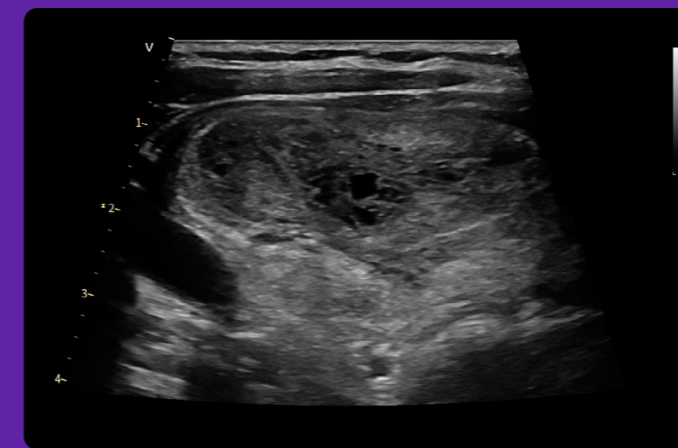
Clarity+

Optimized vascular, abdominal and soft tissues visualization

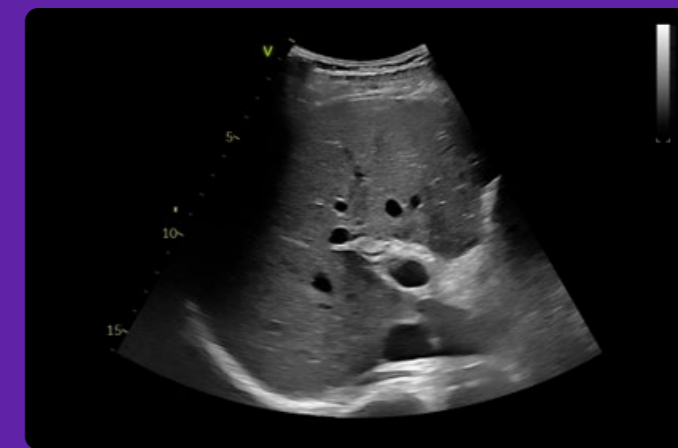
Enables image appearance optimization by enhancing smoothness and sharpening structural edges for clear visualization and differentiation between anatomical structures. Adjust Clarity+ using the easily accessible button on the touch panel.



9L-RS carotid with Clarity+



12L-RS thyroid with Clarity+



C1-5-RS Kidney with Clarity+

Your time. Our workflow tools.

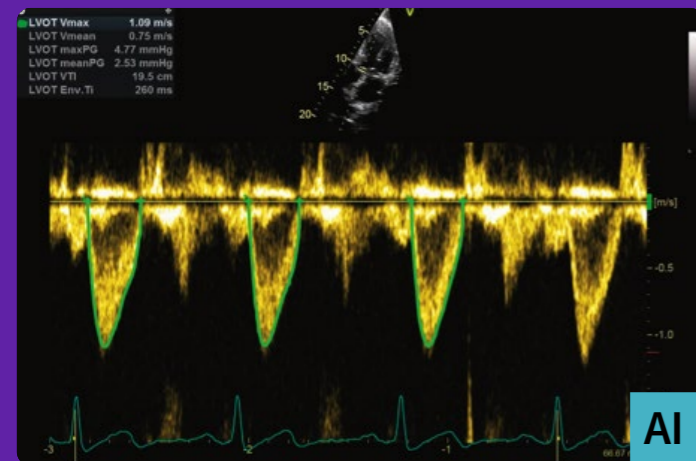
Vivid T9 Ultra Edition features our latest AI-based technology to help reduce tedious tasks and improve workflow efficiency.

AI Auto Measure 2D

With the power of AI, the manual caliper measurements can be completed with 3 clicks: Freeze – Measure – Auto. A full set of reproducible measurements will instantly appear on the screen.



80%
Less clicks¹²



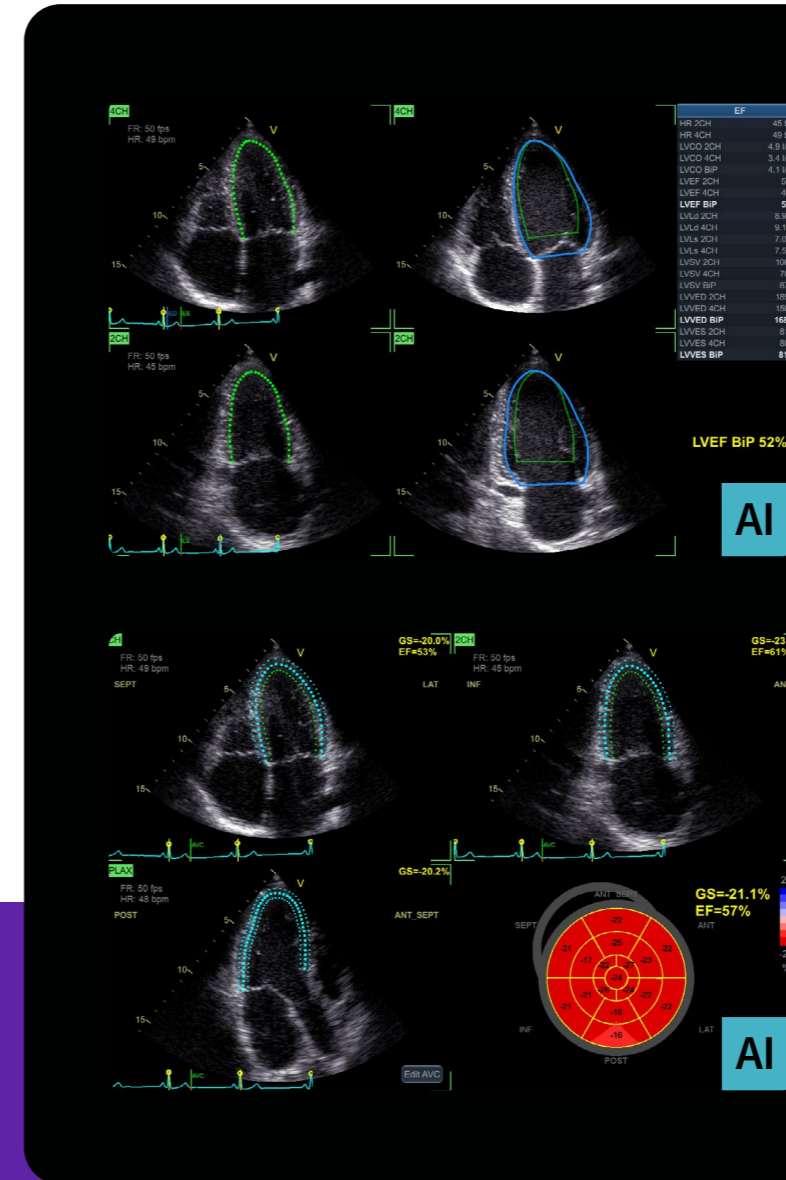
Cardiac Auto Doppler with AI Auto Measure Spectrum Recognition

With the power of AI, a wide range of Doppler measurements can be completed with 2 clicks: Freeze – Measure. A Doppler trace and full set of associated measurements will instantly appear on the screen.

Up to **93%**
fewer keystrokes¹³



35% of cardiac sonographers miss work due to pain¹⁴



Easy AutoEF (without ECG)

Our AI-based Auto ROI detection algorithm allows users to complete ejection fraction, with no manual interaction apart from initiating the tool and approving the results. 2 Chamber or 4 Chamber Ejection Fraction available with or without ECG.

EF results in just **1 click**

Easy AFI LV with AI View Recognition

Our AI-based global and segmental strain measurements require no manual interaction apart from initiating the tool and approving the results. Additionally, you will be able to view EF measurements.

EF and strain results in **15 seconds** (on average)

“ The Vivid T9 Ultra Edition AI-based automated measurements help my staff complete a standard echo exam faster, and with less variability. The new Penetration button on the touch screen helps give the sonographers the extra boost we often need with challenging imaging windows. As a busy private cardiology practice, we appreciate having these advanced options available on an affordable cardiovascular ultrasound system. **”**¹⁵

– Dr. Adurthy Ananth Shankar, MD
Director Cardiovascular division
Essen Healthcare, New-York, USA

Outperform today. Prepare for tomorrow.

Maximize the Vivid lifecycle experience while minimizing your total cost of ownership.



“The implementation of Imaging Insights/Ultrasound Excellence in my biomedical unit for the cardiology and gynecology departments ultrasound equipment has opened the door to better utilization of my systems and distribution of activity, all of which has allowed me to improve our operational efficiencies, cost investment and service to patients.”¹⁹

– Mrs. Valérie Boissart
Head of Biomedical Engineering Department
Luxembourg Hospital Center



Digital Expert/STAR^{***}

Digital Expert (and STAR) provides an interactive, real-time, flexible & convenient way to get education and support.²⁰

 Live exchange with peers

Automated, Remote SW Downloads

Get automated software updates along with safety patches enabled by remote software download. Your system stays up-to-date, making it more reliable.

 Updates 24/7¹⁸

SonoDefense

SonoDefense is GE HealthCare’s six-layer strategic approach to cybersecurity and patient data privacy for ultrasound.

 Advanced cybersecurity & data privacy protection

References:

* Ultra Edition is not a product name, it refers to the 2022 release of the Vivid portfolio.

** Available on Vivid T9 v208. This product is not yet available for sale in the US.

*** Only available in the US.

1. World Health Organisation | <https://www.who.int/news-room/fact-sheets/detail/cardiovascular-diseases-cvds>.
2. Laxmi S. Mehta et.al. | Clinician Well-Being. Addressing Global Needs for Improvements in the Health Care Field | Journal Of The American College Of Cardiology Vol. 78, No. 7, 2021.
3. Moien AB Khan et.al. | Global Epidemiology of Ischemic Heart Disease: Results from the Global Burden of Disease Study | <https://www.ncbi.nlm.nih.gov/pmc/articles/PMC7384703/>.
4. Stephanie David | Importance of Sonographers Reporting Work-Related Musculoskeletal Injury: A Qualitative View | JDMS 21:234–237 May/June 2005 <https://journals.sagepub.com/doi/pdf/10.1177/8756479305274463>.
5. Based on results of GE HealthCare Global Echocardiography Procedure study conducted by iData Research, Inc. 2023.
6. World Health Organization | A universal truth: no health without a workforce. Nov 2013. <https://www.bmj.com/content/347/bmj.f6804>.
7. Easy AutoEF is restricted for use with adult TTE on GE Healthcare raw B-mode data loops of the LV. Easy AutoEF does not support left ventricles with septal bulge.
8. Time to strain measurement result may vary with heart rate, frame rate and Vivid system. Verification of performance done by GEHC clinical application specialists using Vivid system (DOC2739637).
9. Please contact your sales representative for more information.
10. Kurt M, Shaikh K, Peterson L, et al. Impact on contrast echocardiography on evaluation of ventricular function & clinical management in a large prospective cohort. J Am Coll Cardiol. 2009; 53(9):802-810.
11. The statements by Dr. Lopez Sainz described here are based on her own opinions and on results that were achieved in her unique setting. Since there is no "typical" hospital/clinical setting and many variables exist, i.e., hospital size, case mix, staff expertise, etc. there can be no guarantee that others will achieve the same results.
12. The Role of AI in Streamlining Echocardiography Quantification White Paper, Kristin McLeod and Jurica Sprem - JB20789XX.
13. Based on results of time and motion study conducted by GE "JB49055XX - Cardiac Auto Doppler"; study results indicated time savings related productivity increase up to ~8 on an annual basis for a facility per sonographer.
14. Nicholas M. Orme et.al. | Occupational musculoskeletal pain in cardiac sonographers compared to peer employees: a multisite cross-sectional study | <https://onlinelibrary.wiley.com/doi/10.1111/echo.13344>.
15. The statements by Dr. Shankar described here are based on his own opinions and on results that were achieved in his unique setting. Since there is no "typical" hospital/clinical setting and many variables exist, i.e., hospital size, case mix, staff expertise, etc. there can be no guarantee that others will achieve the same results.
16. GE internal data - Website analytics from January 2021 to December 2021.
17. GE internal data.
18. Based on Software eDelivery Software installed.
19. The statements by Mrs. Boissart described here are based on her own opinions and on results that were achieved in her unique setting. Since there is no "typical" hospital/clinical setting and many variables exist, i.e., hospital size, case mix, staff expertise, etc. there can be no guarantee that others will achieve the same results.
20. Digital Expert is only offered in the USA. Digital Expert is not a functionality provided by Vivid systems. Digital Expert is separate from Vivid systems and is for education and training purposes only.

About GE HealthCare Technologies Inc.

GE HealthCare is a leading global medical technology, pharmaceutical diagnostics, and digital solutions innovator, dedicated to providing integrated solutions, services, and data analytics to make hospitals more efficient, clinicians more effective, therapies more precise, and patients healthier and happier. Serving patients and providers for more than 100 years, GE HealthCare is advancing personalized, connected, and compassionate care, while simplifying the patient's journey across the care pathway. Together our Imaging, Ultrasound, Patient Care Solutions, and Pharmaceutical Diagnostics businesses help improve patient care from diagnosis, to therapy, to monitoring. We are a \$19.6 billion business with 51,000 colleagues working to create a world where healthcare has no limits.

Follow us on [LinkedIn](#), [X](#) (formerly Twitter), and [Insights](#) for the latest news, or visit our website <https://www.gehealthcare.com/> for more information.

Products mentioned in the material may be subject to government regulations and may not be available in all countries. Shipment and effective sale can only occur after approval from the regulator. Please check with local GE HealthCare representative for details.

© 2024 GE HealthCare. Vivid, XDclear, EchoPAC, ViewPoint, Centricity, iCenter, iLINQ and InSite are trademarks of GE HealthCare. GE is a trademark of General Electric Company used under trademark license.

DICOM is the registered trademark of the National Electrical Manufacturers Association for its standards publications relating to digital communications of medical information.

Ultra Edition is not a product name, it refers to the 2022 release of the Vivid portfolio.

Third party trademarks are the property of their respective owners.

August 2024
JB21109XX



GE HealthCare