



GE HealthCare

# Versana Premier™

Easy to use. Easy to learn. Easy to diagnose.



Some innovations feel so natural from the start,  
you wonder how you ever lived without them





# Versana Premier

Easy to use. Easy to learn. Easy to diagnose.


Investing in and introducing a new ultrasound system to your practice can be a significant and challenging decision. Versana Premier helps clinicians enjoy the sophisticated yet familiar simplicity of an ultrasound system that feels natural from the start, making it easier than ever to deliver quality care to a wide range of patients every day.


Easy to use and easy to learn, Versana Premier lets clinicians easily and confidently diagnose a wide range of conditions. Whether you're working in an imaging center, general practice clinic, family doctor's office, or hospital, you can count on Versana Premier as a reliable and user-friendly ultrasound system designed to empower clinicians, enhance their efficiency, and provide optimal care, all with effortless productivity in mind.


# Easy to use

From its design to its automated tools to its reliable service and support, Versana Premier delivers an effortless user experience.


## Transform your workflow and accelerate scanning with advanced, intuitive features

 Experience up to 38% faster workflow with *Whizz clinical features*, saving time and simplifying workflow<sup>1</sup>

 Create your own report templates with *Whizz Report* and import and display datasheets for references while scanning with *Whizz Notes*

 Use new on-console features, including single-button flow shortcuts like *Assistant*, to fit seamlessly into your daily routine

## Advanced design and capabilities to simplify operations and meet the needs of your practice and patients

 Easily move the system around your facility with its portable design that is equipped with enhanced ergonomic updates, improved accessory management, and extended battery-powered scanning.



# Easy to learn

Versana Premier offers an array of clinical and product education resources to help you and your staff master the system quickly, broaden your range of exam capabilities, and spend more quality time with your patients.

Robust educational support, advanced tools, & reliable service provide a comprehensive solution for users' practices both now & in the future



Completely backed by GE HealthCare for education and service with *Versana Club*, *My Trainer*, and *eDelivery*



1 — Maximize your efficiency and train new users with built-in reference and guidance tools, including *Scan Assistant*, *Scan Coach*, and *Scan Coach Voice Comments*



Benefit from the additional support tools such as *Imaging Insights*, which automatically optimizes system and probe fleet investment plans, identifies staff assignment and training needs, and monitors the variability of staff usage patterns. Capabilities such as *Digital Expert Connect* enable users to easily collaborate virtually with colleagues throughout their network, no matter where they're located



# Easy to diagnose

Powered by *VisionBoost Architecture*, Versana Premier is designed to provide optimal image quality day after day, patient after patient so users can accurately make decision and reach a diagnosis with the greatest of ease.

## Capture exceptional images with advanced clinical features to address challenging cases across clinical specialties and care areas



See faster *3D/4D Renderings\** supported by an updated graphic and processing unit



Shift between Smooth Mode and Sharp Mode to view image features as preferred with *Whizz Easy Style*



Optimize images while scanning with *Whizz* and easily enhance or suppress color signals with *Whizz Color Flow*



Evaluate blood flow for possible vessel-wall irregularities and more with *B-Flow*, *B-Flow Color*, and *Power Doppler Imaging*



Effortlessly obtain the render start position with *Whizz RenderLive* to easily separate solid tissue in front of rendered objects for Static 3D/4D imaging



Leverage a wide range of transducers, including *L4-20t-RS*, *6Tc-RS*, and *IC9-RS*, which produces high resolution images across clinical specialties or care areas

## Reduce your scan time with automated productivity and simplified measurement tools



Make automated 2D Measurements and Volume Calculations with *Auto Contour* to measure nodules, *Auto Bladder*, *Whizz Follicle*, and *Auto-IMT*



Use automated labeling of the right kidney, gallbladder, and liver in the RUQ with *Whizz Label*



Assess liver, thyroid, and breast nodules with Productivity Packages leveraging *LI-RADS*,<sup>®</sup> *TI-RADS*,<sup>®</sup> and *BI-RADS*<sup>®</sup> criteria



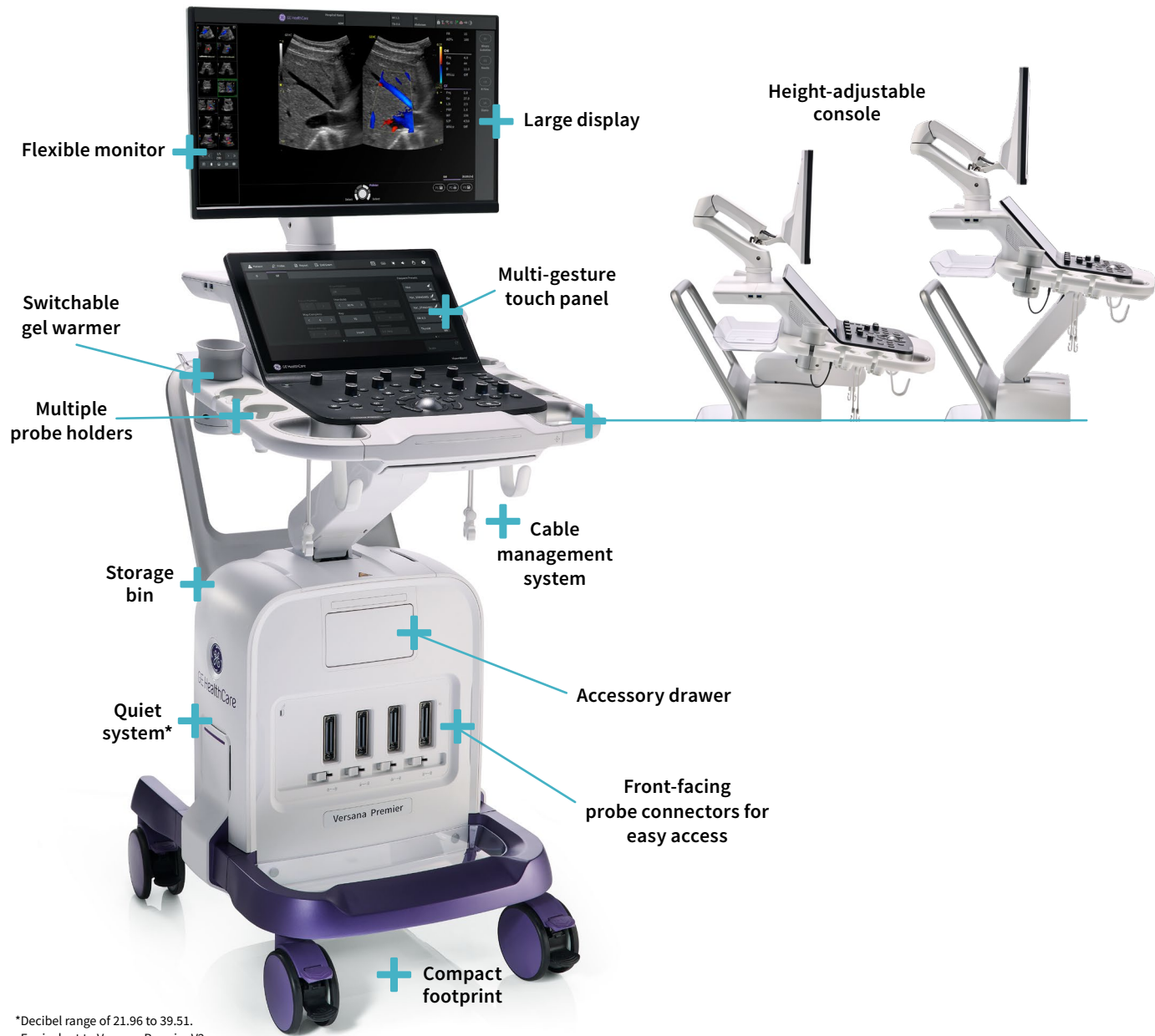
Easily compare current and prior exams and track treatment progress with *Follow-Up Tool*



Effortlessly adapt to various care scenarios with a wide range of probes

\*Compared to Versana Premier V2

## Ergonomics & hardware updates



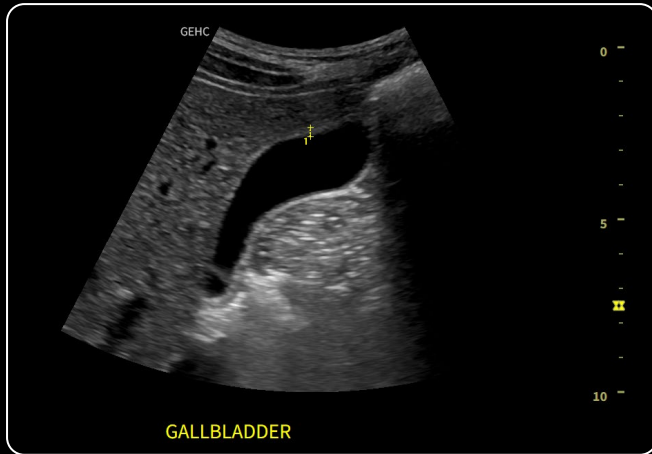
## Versana Premier

is an intelligently productive, user-friendly ultrasound system with multiple exam protocols, tools, and advanced applications to streamline processes so it's easier than ever for you to deliver quality care to your wide range of patients every day.

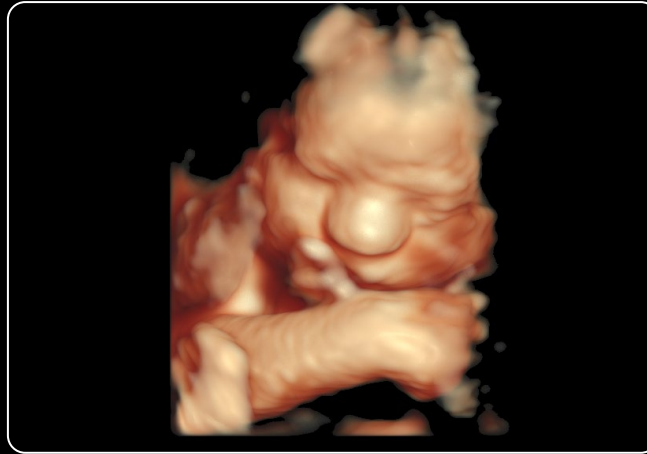


\*Decibel range of 21.96 to 39.51. Equivalent to Versana Premier V2

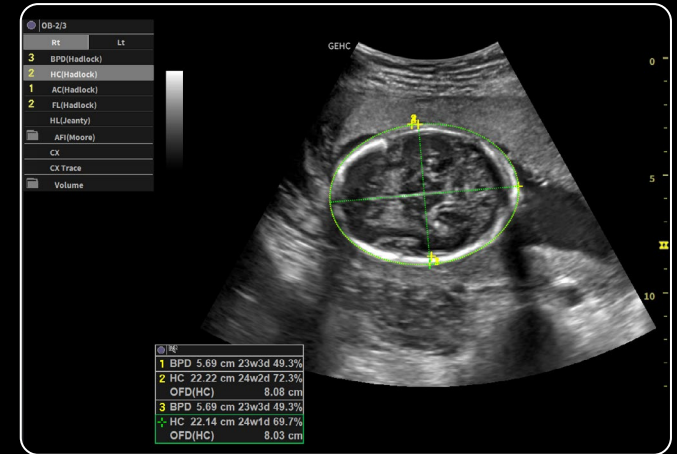
# Image gallery



C1-5-RS Gallbladder Wall Measurement



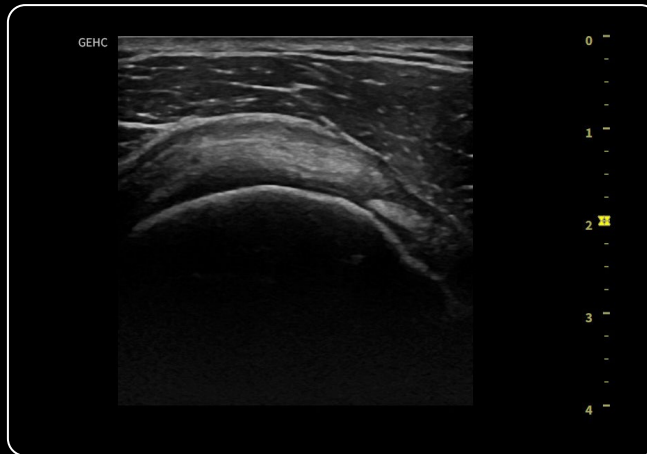
RAB2-6-RS Static 3D with V-Live 2.0



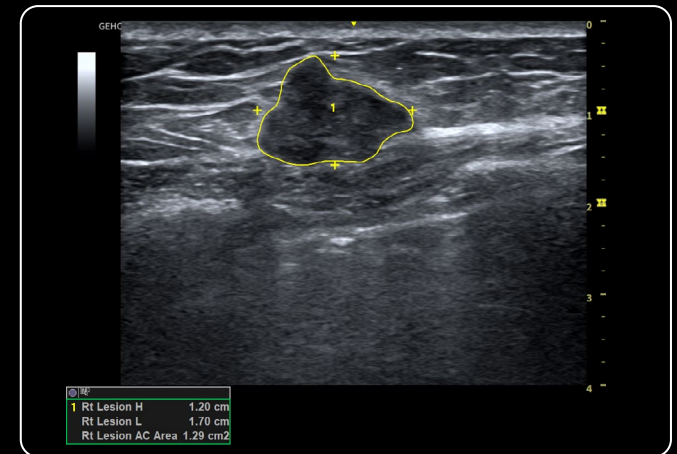
4C-RS BPD with SonoBiometry



4C-RS Abdomen with Whizz Label

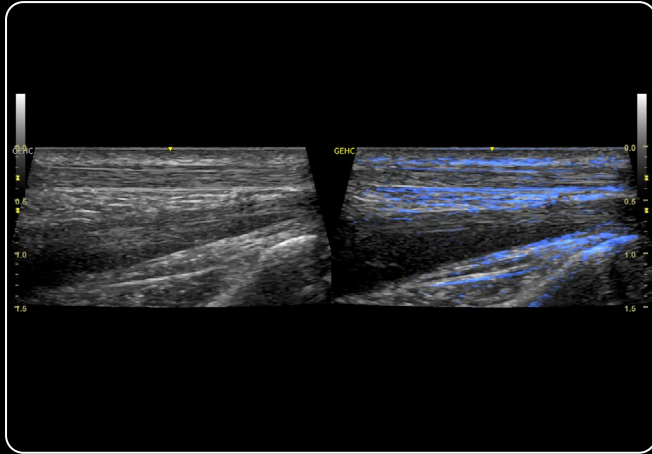


12L-RS Supraspinatus Tendon

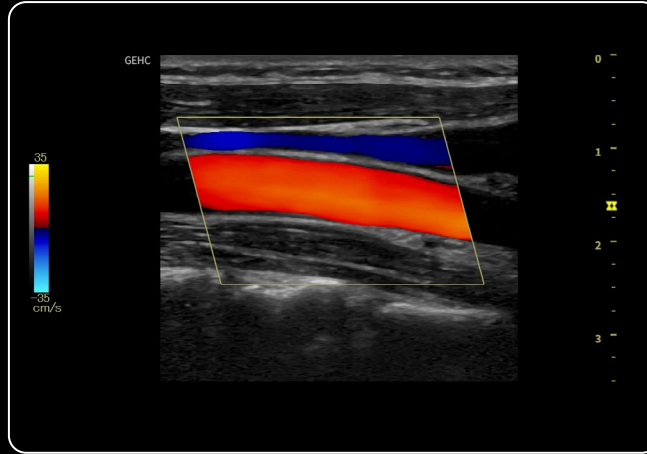


L3-12-RS Breast Nodule with Auto Contour

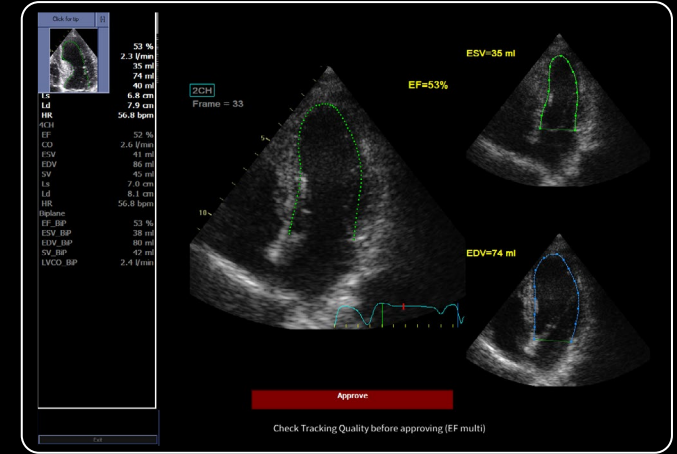
# Image gallery



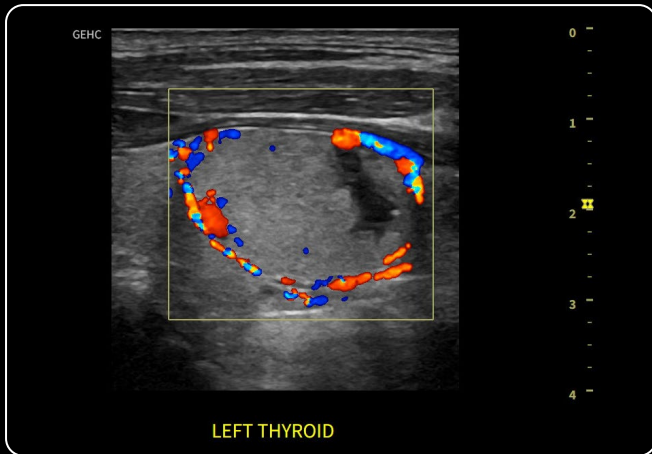
L8-18i-RS Median Nerve with Follow Up Fusion



L6-12-RS Carotid with color Doppler



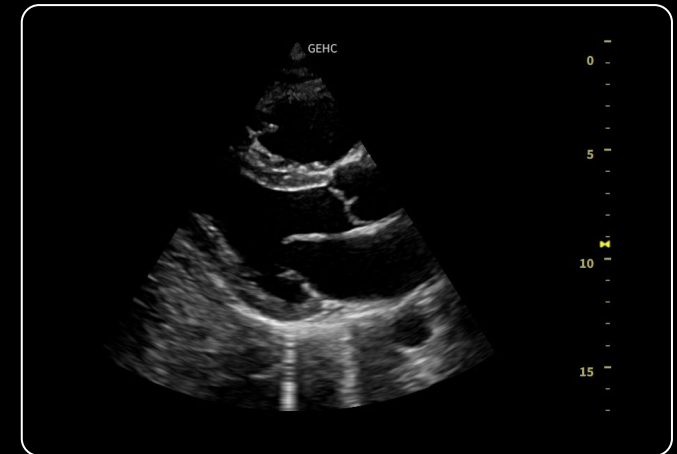
3Sc-RS Auto Ejection Fraction



12L-RS Thyroid with color Doppler



L6-12-RS Jugular with B-Flow



3Sc-RS Cardiac Parasternal Long Axis

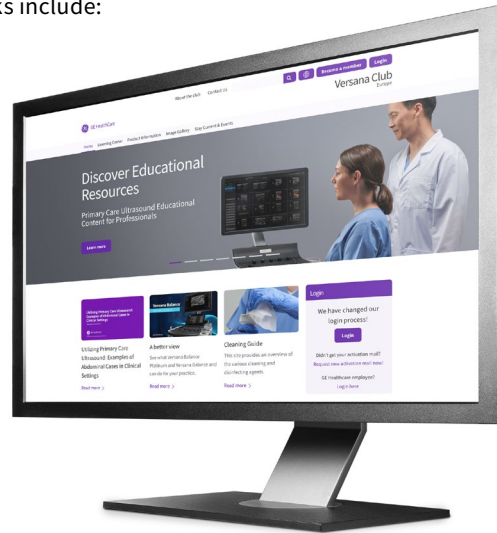
# Familiar from day one

An ultrasound solution making the delivery of quality patient care easier than ever before

## Advance your ultrasound skills with Versana Club

No matter your skill level, you can learn to harness the full power of your Versana Premier system with a membership in the Versana Club. The Versana Club offers resources to help you build your skills, network with others and share your ultrasound knowledge. Membership perks include:

- Image-sharing with peers around the world
- Web-based video tutorials and other educational offerings
- Information on Versana service solutions and products
- Articles on ultrasound and patient care



Register now at  
[www.versanaclub.net](http://www.versanaclub.net)

## Customized solutions and path to growth

Versana Premier can scale to suit your practice today and grow with you. Select a basic console and software. Then choose from a variety of optional upgrades as your practice advances

## Experience the strength of the GE HealthCare family

Your support team is fully trained, GE HealthCare qualified, deeply experienced, and nearby.

- Expert support during and after purchase
- In-depth staff product training
- Remote or on-site technical, clinical and network support



Versana Essential™

Versana Premier™

Versana Balance™

Versana Active™





1. GE HealthCare-sponsored usability study, using Whizz. Study was conducted in December 2022. JB24263XX

Products mentioned in the material may be subject to government regulations and may not be available in all countries. Shipment and effective sale can only occur after approval from the regulator. Please check with local GE HealthCare representative for details.

© 2025 GE HealthCare.

Versana Premier, Versana Essential, Versana Balance, Versana Active are trademarks of GE HealthCare. LI-RADS, TI-RADS and BI-RADS are trademarks of American College of Radiology. GE is a trademark of General Electric Company used under trademark license.

March 2025 JB29044XX



One of the most prestigious design competitions in the world, the iF DESIGN AWARD has recognized design excellence worldwide since 1954.

