

# Versana Active™

Care with confidence



# Introducing Versana Active

Versana Active ultrasound system delivers the imaging capability of a console in a hand-carried, lightweight package that enables you to actively take your system to your patients, on premises or remote facilities. This reliable system brings the agility of a laptop unit with capability for attaching to a cart. Adaptable to cover a broad range of everyday GP exams, it is easy to carry to clinics and physician offices.

This high-quality yet affordable unit comes from the GE HealthCare legacy of ultrasound imaging excellence. It combines design, workflow and features developed based on extensive research and testing to meet users' demanding requirements.



**Advanced.  
Capable.  
Adaptable.**

*World-class ultrasound designed  
for peace of mind.*



World-class  
image quality



Durability for demanding  
usage day after day



Smart clinical applications  
for thyroid, bladder,  
and more



Intelligent automated  
productivity tools  
including Whizz



Scan Assistant to customize  
exam protocols



Clinical and product  
education\*



Flexible financing  
options\*



Expert service and  
technical support



Access to a network of  
Versana users

\*Local educational offerings and financing options may vary according to regions. Please check with your local GE HealthCare representative.

# A partner you can trust

Count on GE HealthCare for equipment and support to help you reach new levels of GP excellence

Dependable service and support for peace of mind

GE HealthCare delivers flexible, multi-year coverage to ensure long life, high uptime, efficient patient throughput, and a strong return on investment.

- Expert service engineers always close by
- Simple maintenance, troubleshooting and repair
- InSite™ service technology for fast remote diagnostics\*
- Three-year warranty\*

Decades of GE HealthCare heritage at your service

Versana Active links you to vast GE HealthCare ultrasound expertise. It's designed with you, your practice, and your patients in mind to meet your clinical, workflow and connectivity needs.



\*Warranty and remote diagnostic offerings may vary by country or region. Please check with your local GE HealthCare representative.

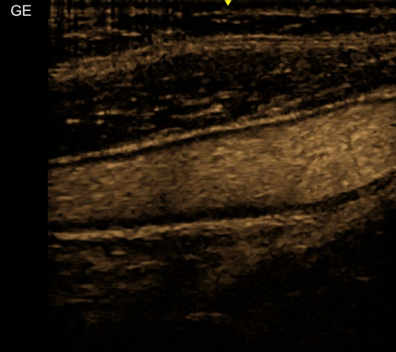
## Advanced capability in a compact system

Versana Active image quality ranks with the best in its class and persists for the life of the system. High spatial and contrast resolution help you clearly visualize anatomical structures and physiological function, and make confident decisions at the point of care.

Whizz constantly optimizes image quality as you scan, even as you move from one organ or region to another. This world-class yet affordable system also gives you proven functionalities from higher-end GE HealthCare ultrasound systems.



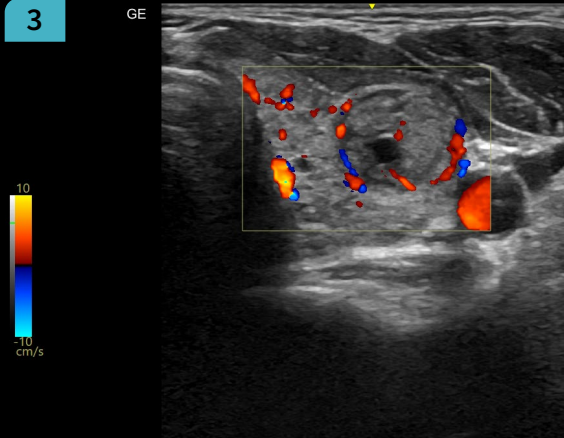
1



2



3



4



1. Sensitive B-Flow and B-Flow color imaging to analyze blood flow, vessel-wall irregularities and stenosis, and more.
2. CrossXBeam™ and SRI-HD to define structure borders clearly.
3. Sensitive color Doppler to examine thyroid vasculature and blood flow in vessels.
4. Precision in anatomic detail ensures accuracy in obstetrical dating measurements, viability, and differentiating multifetal gestation.

# A complete solution

## Advanced applications, educational support, and attractive financing

### Capable, adaptable system for comprehensive GP scanning

The light, portable Versana Active makes exams comfortable for you and your patients, in clinic. Scan at bedsides or in space-constrained rooms. Perform abdominal, OB/GYN, cardiac, MSK, vascular exams, and more – plus needle-guidance procedures. This highly adaptable system lets you add a cart to create a full-featured console system and suit your practice needs.

Fast boot-up lets you place the system in standby, then instantly scan the next patient who needs imaging. Advanced clinical applications and automated tools simplify exams, streamline workflow, and enable fast, high-volume scanning.



Use a *Thyroid Productivity Tool* for structure characterization and TI-RADS<sup>®</sup> assessment



Use *Scan Coach* 3D animation, anatomic illustrations and reference images to find the correct scan plane



Measure intima-media thickness with *Auto-IMT*



View fetal details with 3D imaging; take fetal measurements with *SonoBiometry*



Use *Auto Bladder* to easily calculate volumes, including residual urine volume



*Upload images* and reports to network storage (EMR, PACS) for consultation with patients



*4D* provides continuous, high-volume image acquisition<sup>†</sup>



Create custom exam protocols and standardized workflow with *Scan Assistant*



Simplify exams and measure structures detected with a *Breast Productivity Tool*



Use the *Follow-Up Tool* to easily compare current and prior images



Use *templates* to create custom reports to suit global or regional standards



Easily add *voice comments* to exams



*Perpetual battery life* by design<sup>††</sup>



Enhanced ergonomics with *advanced cart*<sup>††</sup>

### Flexible financing to enhance return on investment

Financing plans including monthly payments help you meet financial goals and grow your practice.

<sup>†</sup>Available on Versana Active v1.5.

<sup>††</sup>External batteries can be charged remotely and changed while system is on.

Financing options and educational offerings vary from country to country. Please check with your local GE HealthCare representative.

## Sharpen your skills and stay ahead of the curve

- Training and ultrasound education solutions including product and clinical tutorials
- My Trainer on-board help with system care, setup and operation
- Local face-to-face training and remote application support



## Check out these convenient features

Convenient carrying handle



High durability



*Light* (5 kg/11.02 lb) and *slim* (57 mm/2.3 in)



Choice of three optional carts with height adjustability option to suit scanning preferences<sup>†</sup>



Wide range of probe offerings

Multiple probe port connectivity on carts<sup>†</sup>

<sup>†</sup>Available on Versana Active v1.5.

# An opportunity for growth

Versana ultrasound systems serve you well today and set your course for the future.

## Experience the strength of the GE HealthCare family

Your support team is fully trained, GE HealthCare-qualified, deeply experienced, and nearby.

- Expert support during and after purchase
- In-depth staff product training
- Remote or on-site technical, clinical and network support

## Customized solutions and path to growth

Versana Active can scale to suit your general practice today and grow with you. Select a basic system and software. Then choose from optimal Versana upgrades or a wide range of specialized GE HealthCare ultrasound systems as your practice advances.

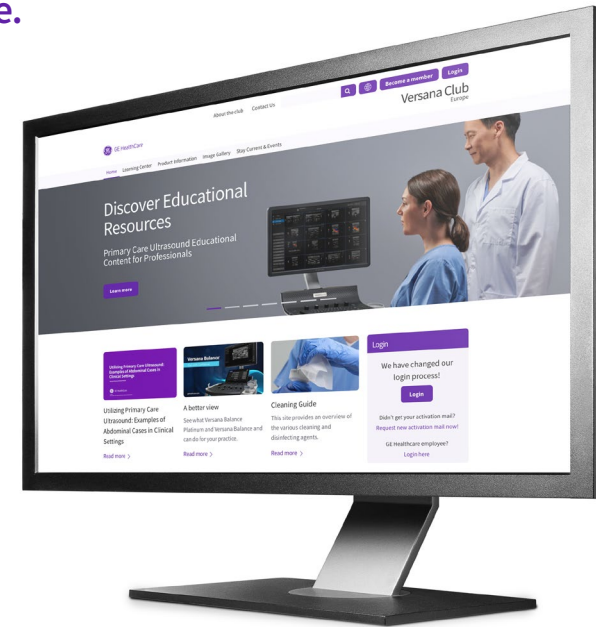


## Versana Club: Learn. Network. Share.

The Versana Club community offers resources to help you expand your ultrasound knowledge and improve your practice.

- Educational offerings
- Web-based video tutorials
- Information on Versana family service solutions and products
- Up-to-date content on ultrasound and patient care
- Notices of regional ultrasound events and other news
- Access to the broader family of GE HealthCare ultrasound user clubs

Register now at [www.versanaclub.net](http://www.versanaclub.net).



## Versana Active is part of the Versana ultrasound family

Complete solutions that help empower care without compromise, balancing capability, affordability, and reliability.



Products mentioned in the material may be subject to government regulations and may not be available in all countries. Shipment and effective sale can only occur after approval from the regulator. Please check with local GE HealthCare representative for details.

© 2024 GE HealthCare.

Versana Active, InSite and CrossXBeam are trademarks of GE HealthCare. TI-RADS is a trademark of American College of Radiology. GE is a trademark of General Electric Company used under trademark license.

October 2024 JB30852XX