

# Versana Active™

Care with confidence



# Introducing Versana Active

Versana Active ultrasound delivers the imaging capability of a console in a hand-carried, lightweight unit that lets you take OB/GYN imaging power to your patients. This reliable system brings the agility of a laptop unit with capability for carrying on a cart. Adaptable to cover a broad range of exams, it is easy to carry within clinics and physician offices and off premises, including remote public health centers in need of quality OB/GYN care.

This high-quality yet affordable unit comes from the GE HealthCare legacy of ultrasound imaging excellence. It combines design, workflow and features developed based on extensive research and testing to meet users' demanding requirements.



**Advanced.  
Capable.  
Adaptable.**

*World-class ultrasound designed  
for peace of mind.*



World-class image quality,  
including 3D imaging



Durability for demanding  
usage day after day



Smart clinical  
features



Whizz and other automated  
productivity tools



Scan Assistant to customize  
OB/GYN exam protocols



On-board product tutorials  
and clinical education\*



Flexible financing  
options\*



Expert service and  
technical support



Access to a network of  
Versana users

\*Local educational offerings and financing options may vary according to regions.  
Please check with your local GE HealthCare representative.

# A partner you can trust

Count on GE HealthCare for equipment and support to help you reach new levels of OB/GYN excellence

Dependable service and support for peace of mind

GE HealthCare delivers flexible, multi-year coverage to ensure long life, high uptime, efficient patient throughput, and a strong return on investment.

- Expert service engineers always close by
- Simple maintenance, troubleshooting and repair
- InSite™ service technology for fast remote diagnostics\*
- Three-year warranty\*

Decades of GE HealthCare heritage at your service

Versana Active links you to vast GE HealthCare OB/GYN ultrasound experience. It's designed with you, your practice, and your patients in mind, to meet your clinical, workflow and connectivity needs.

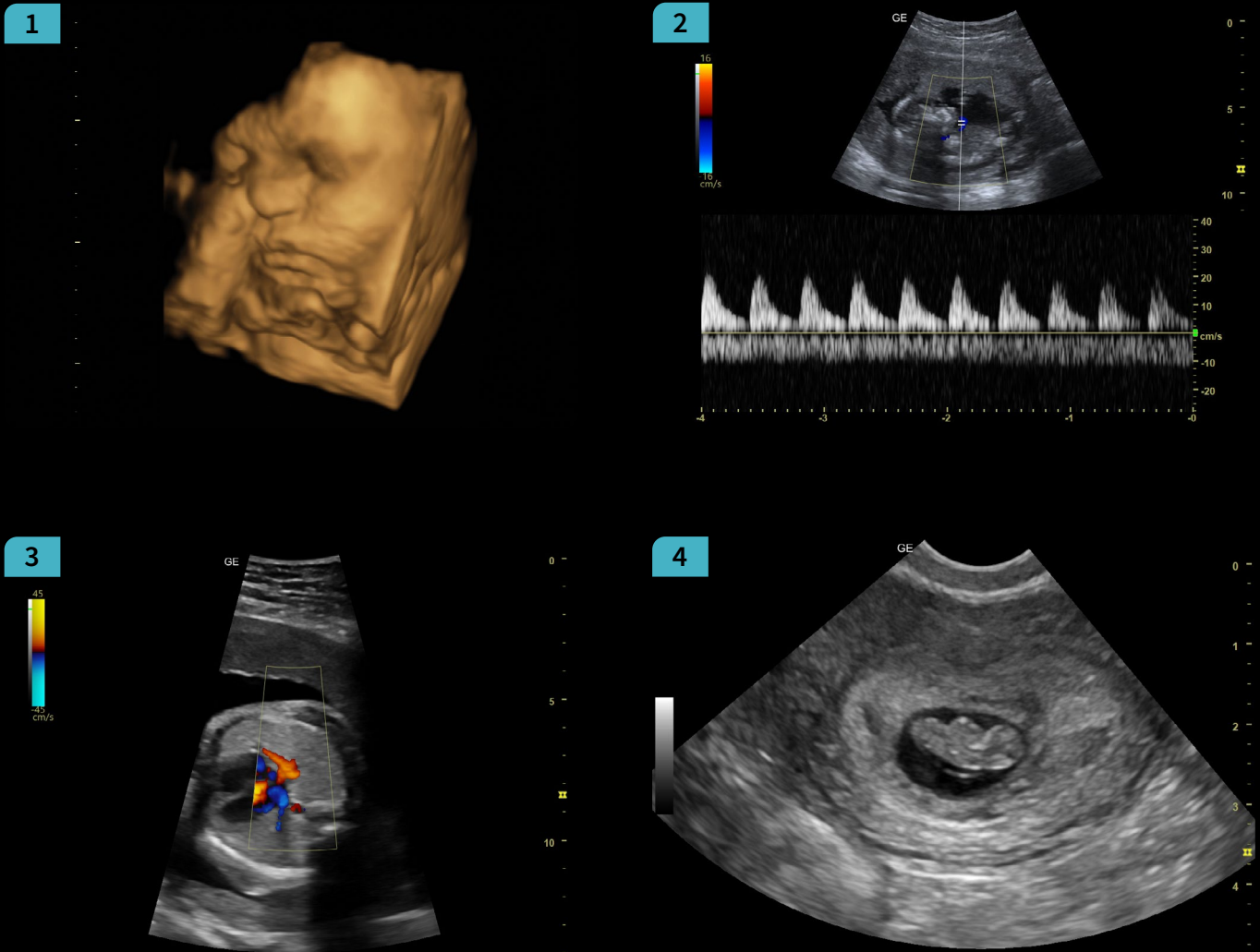


\*Warranty and remote diagnostic offerings may vary by country or region. Please check with your local GE HealthCare representative.

## Advanced capability in a compact system

Versana Active OB/GYN image quality ranks with the best in its class and persists for the life of the system. High spatial and contrast resolution help you clearly visualize anatomical structures and physiological function, and make confident decisions at the point of care.

Whizz constantly optimizes image quality as you scan, even as you move from one organ or region to another. This world-class yet affordable system also gives you proven functionalities from higher-end GE HealthCare ultrasound systems.



1. 4D functionality aids in decision making through enabling additional dimension in real time.<sup>†</sup>
2. Sensitive spectral Doppler imaging to analyze blood flow including fetal blood flow.
3. Sensitive color Doppler to assess endometrial health, and three-vessel umbilical cord, nuchal cord and fetal heart status.
4. Precision in anatomic detail ensures accuracy in obstetrical dating measurements, viability, and differentiating multifetal gestation.

<sup>†</sup>Available on Versana Active v1.5.














# A complete solution

## Advanced applications, educational support, and attractive financing

### Capable, adaptable system for comprehensive OB/GYN scanning

The light, portable Versana Active makes OB/GYN exams comfortable for you and your patients, in clinic or off site. Scan at bedsides or in space-constrained rooms. This highly adaptable system lets you add a cart to create a full-featured console system and suit your practice needs.

Clinical applications and automated tools simplify exams, streamline workflow, and enable fast, high-volume scanning.

 <p>Create custom OB/GYN exam protocols and standardized workflow with <i>Scan Assistant</i></p>	 <p>View fetal details with <i>3D imaging</i></p>	 <p>Take fetal measurements with <i>SonoBiometry</i></p>	 <p><i>Record fetal growth</i> monitoring and structure descriptions</p>
 <p>Use <i>Fetus Growth Trend</i> to compare current and prior exams and track fetal development</p>	 <p><i>4D</i> provides continuous, high-volume image acquisition<sup>†</sup></p>	 <p><i>Perpetual battery life</i> by design<sup>**</sup></p>	 <p>Use <i>Scan Coach</i> 3D animation, anatomic illustrations and reference images to find the correct scan plane</p>
 <p>Use <i>Whizz</i> to scan while the system seamlessly optimizes image quality</p>	 <p>Use <i>templates</i> to create custom reports to suit global or regional standards</p>	 <p>Easily add <i>voice comments</i> to exams</p>	 <p><i>Upload images</i> and reports to network storage (EMR, PACS) for consultation with patients</p>
 <p>Enhanced ergonomics with <i>advanced cart</i><sup>†</sup></p>			

### Flexible financing to enhance return on investment

Financing plans including monthly payments help you meet financial goals and grow your practice.

<sup>†</sup>Available on Versana Active v1.5.

<sup>\*\*</sup>External batteries can be charged remotely and changed while system is on.

Financing options and educational offerings vary from country to country. Please check with your local GE HealthCare representative.

## Sharpen your skills and stay ahead of the curve

- Training and ultrasound education solutions including product and clinical tutorials
- My Trainer on-board help with system care, setup and operation
- Local face-to-face training and remote application support



## Check out these convenient features

Convenient carrying handle



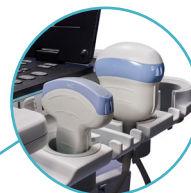
High durability



*Light* (5 kg/11.02 lb) and *slim* (57 mm/2.3 in)



Choice of three optional carts with height adjustability option to suit scanning preferences<sup>†</sup>



Wide range of probe offerings<sup>†</sup>

Multiple probe port connectivity on carts<sup>†</sup>

<sup>†</sup>Available on Versana Active v1.5.

# An opportunity for growth

Versana ultrasound systems serve you well today and set your course for the future.

## Experience the strength of the GE HealthCare family

Your support team is fully trained, GE HealthCare-qualified, deeply experienced, and nearby.

- Expert support during and after purchase
- In-depth staff product training
- Remote or on-site technical, clinical and network support

## Customized solutions and path to growth

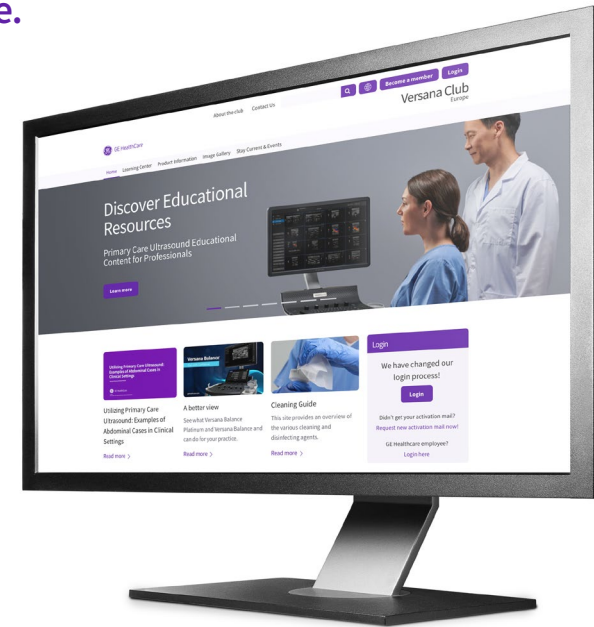
Versana Active can scale to suit your general practice today and grow with you. Select a basic system and software. Then choose from optimal Versana upgrades or a wide range of specialized GE HealthCare ultrasound systems as your practice advances.

## Versana Club: Learn. Network. Share.

The Versana Club community offers resources to help you expand your ultrasound knowledge and improve your practice.

- Educational offerings
- Web-based video tutorials
- Information on Versana family service solutions and products
- Up-to-date content on ultrasound and patient care
- Notices of regional ultrasound events and other news
- Access to the broader family of GE HealthCare ultrasound user clubs

Register now at [www.versanaclub.net](http://www.versanaclub.net).



## Versana Active is part of the Versana ultrasound family

Complete solutions that help empower care without compromise, balancing capability, affordability, and reliability.



Products mentioned in the material may be subject to government regulations and may not be available in all countries. Shipment and effective sale can only occur after approval from the regulator. Please check with local GE HealthCare representative for details.

© 2024 GE HealthCare.

Versana Active and InSite are trademarks of GE HealthCare. GE is a trademark of General Electric Company used under trademark license.

October 2024 JB30853XX