

Versana Active™

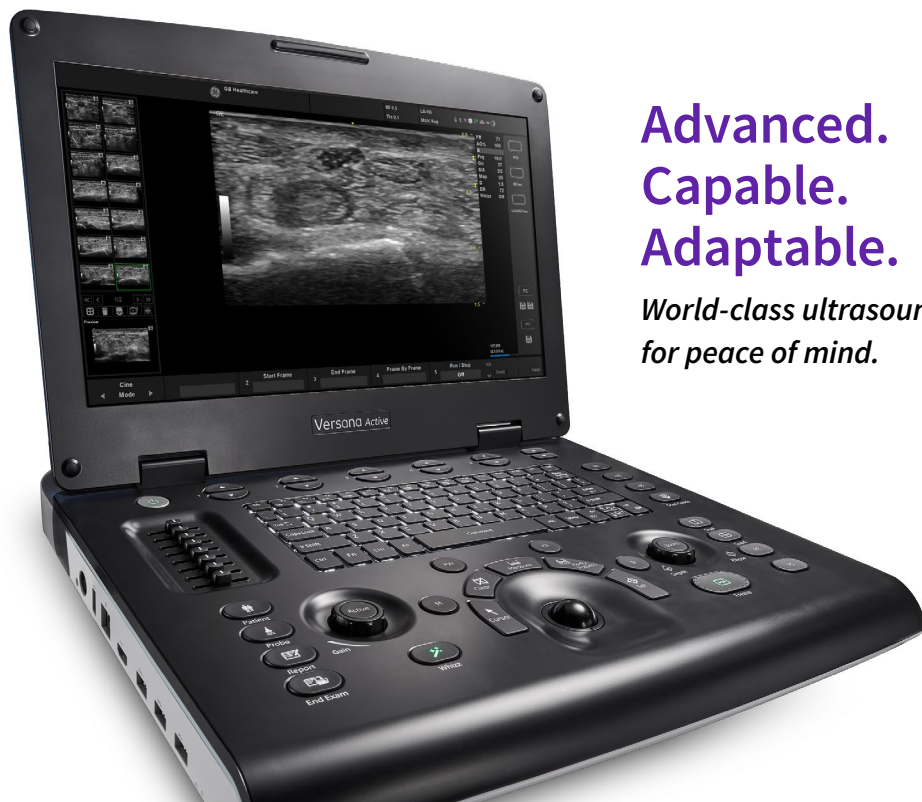
Care with confidence



Introducing Versana Active

Versana Active ultrasound system delivers the imaging capability of a console in a hand-carried, lightweight unit that enables you to provide musculoskeletal imaging to your patients, on premises or remote facilities. This reliable system brings the agility of a laptop unit with capability for attaching to a cart. Adaptable to cover a broad range of MSK exams, it is easy to carry to clinics and physician offices.

This high-quality yet affordable unit comes from the GE HealthCare legacy of MSK ultrasound imaging excellence. It combines design, workflow and features developed based on extensive research and testing to meet users' demanding requirements.



**Advanced.
Capable.
Adaptable.**

*World-class ultrasound designed
for peace of mind.*



World-class
MSK image quality



Durability for demanding
usage day after day



Smart clinical
applications



Intelligent automated
productivity tools
including Whizz



Scan Assistant to customize
MSK exam protocols



Clinical and product
education*



Flexible financing
options*



Expert service and
technical support



Access to a network of
Versana users

*Local educational offerings and financing options may vary according to regions. Please check with your local GE HealthCare representative.

A partner you can trust

Count on GE HealthCare for equipment and support to help you reach new levels of MSK imaging excellence

Dependable service and support for peace of mind

GE HealthCare delivers flexible, multi-year coverage to ensure long life, high uptime, efficient patient throughput, and a strong return on investment.

- Expert service engineers always close by
- Simple maintenance, troubleshooting and repair
- InSite™ service technology for fast remote diagnostics*
- Three-year warranty*

Decades of GE HealthCare heritage at your service

Versana Active links you to vast GE HealthCare MSK ultrasound experience. It's designed with you, your practice, and your patients in mind, to meet your clinical, workflow and connectivity needs.

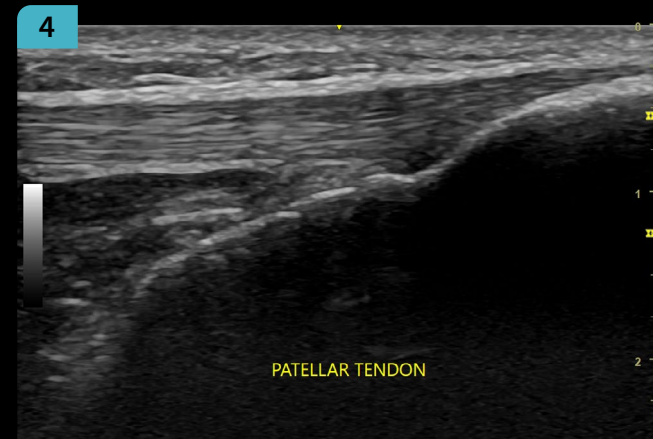
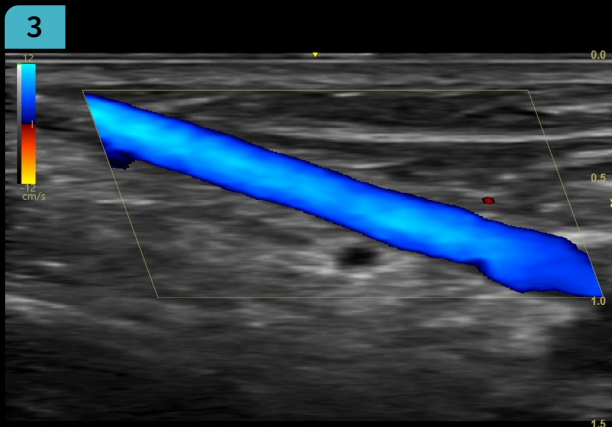
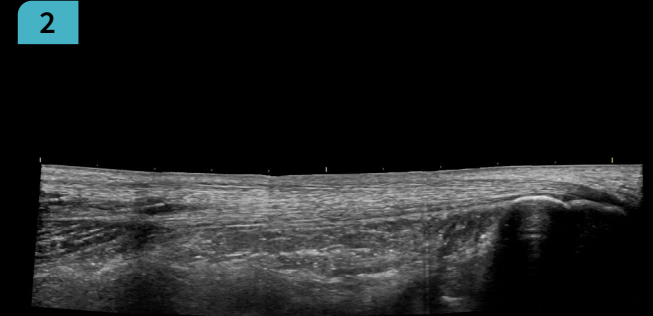
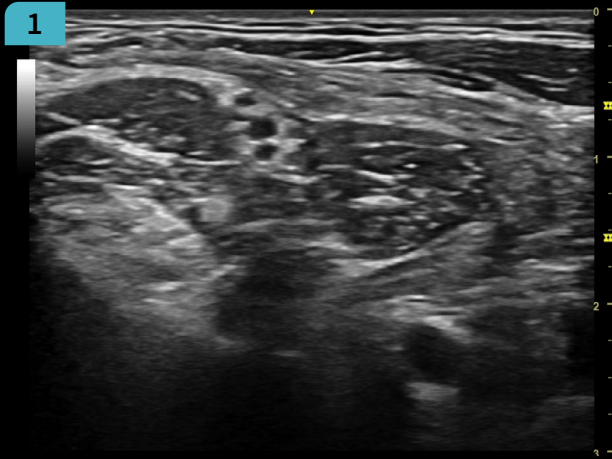


*Warranty and remote diagnostic offerings may vary by country or region. Please check with your local GE HealthCare representative.

Advanced capability in a compact system

Versana Active MSK image quality ranks with the best in its class and persists for the life of the system. High spatial and contrast resolution help you clearly visualize anatomical structures and physiological function, and make confident decisions at the point of care.

Whizz constantly optimizes image quality as you scan, even as you move from one bone or region to another. This world-class yet affordable system also gives you proven functionalities from higher-end GE HealthCare ultrasound systems.



1. CrossXBeam™ and SRI-HD to define structure borders clearly.
2. Construct and view a static 2D image which is wider than the field of view of a given transducer with LOGIQ™ View.
3. Sensitive color Doppler to evaluate presence of vessels.
4. High-resolution static ultrasound images along with dynamic imaging capability, allow musculoskeletal evaluation for injury and other pathologic conditions.

A complete solution

Advanced applications, educational support, and attractive financing

Capable, adaptable system for comprehensive MSK scanning

The light, portable Versana Active makes exams comfortable for you and your patients, in clinic or off site. Scan at bedsides or in space-constrained rooms. This highly adaptable system lets you add a cart to create a full-featured console system and suit your practice needs.

Fast boot-up lets you place the system in standby, then instantly scan the next patient who needs imaging. Clinical applications and automated tools simplify exams, streamline workflow, and enable fast, high-volume scanning.



Use an *L8-18i-RSi* “hockey stick” probe for ideal imaging of hands, feet and wrists



Create custom MSK exam protocols and standardized workflow with *Scan Assistant*



Use *Whizz* to scan while the system seamlessly optimizes image quality



Use *Scan Coach* 3D animation, anatomic illustrations and reference images to find the correct scan plane



Perpetual battery life by design**



Use the *Follow-Up Tool* to easily compare current and prior images



Use *templates* to create custom reports to suit global or regional standards



Easily add *voice comments* to exams



Upload images and reports to network storage (EMR, PACS) for consultation with patients



Enhanced ergonomics with *advanced cart*[†]

Flexible financing to enhance return on investment

Financing plans including monthly payments help you meet financial goals and grow your practice.

[†]Available on Versana Active v1.5.

^{**}External batteries can be charged remotely and changed while system is on.

Financing options and educational offerings vary from country to country. Please check with your local GE HealthCare representative.

Sharpen your skills and stay ahead of the curve

- Training and ultrasound education solutions including product and clinical tutorials
- My Trainer on-board help with system care, setup and operation
- Local face-to-face training and remote application support



Check out these convenient features

Convenient carrying handle



High durability



Light (5 kg/11.02 lb) and *slim* (57 mm/2.3 in)



Choice of three optional carts with height adjustability option to suit scanning preferences[†]



Wide range of probe offerings

Multiple probe port connectivity on carts[†]

[†]Available on Versana Active v1.5.

An opportunity for growth

Versana ultrasound systems serve you well today and set your course for the future.

Experience the strength of the GE HealthCare family

Your support team is fully trained, GE HealthCare-qualified, deeply experienced, and nearby.

- Expert support during and after purchase
- In-depth staff product training
- Remote or on-site technical, clinical and network support

Customized solutions and path to growth

Versana Active can scale to suit your general practice today and grow with you. Select a basic system and software. Then choose from optimal Versana upgrades or a wide range of specialized GE HealthCare ultrasound systems as your practice advances.

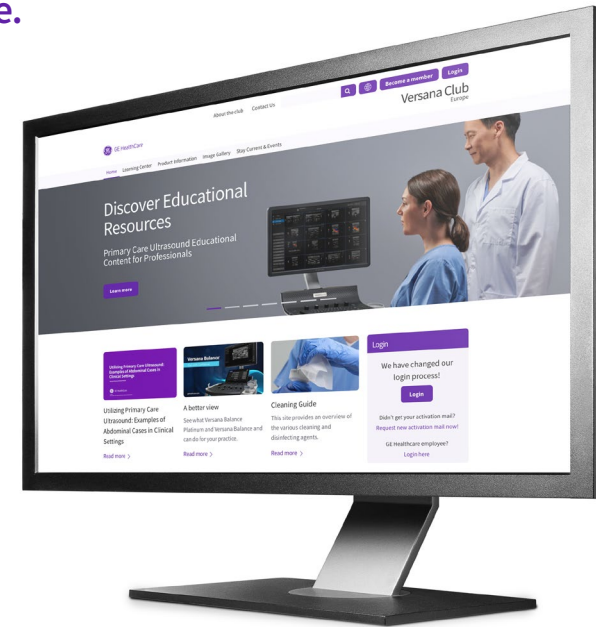


Versana Club: Learn. Network. Share.

The Versana Club community offers resources to help you expand your ultrasound knowledge and improve your practice.

- Educational offerings
- Web-based video tutorials
- Information on Versana family service solutions and products
- Up-to-date content on ultrasound and patient care
- Notices of regional ultrasound events and other news
- Access to the broader family of GE HealthCare ultrasound user clubs

Register now at www.versanaclub.net.



Versana Active is part of the Versana ultrasound family

Complete solutions that help empower care without compromise, balancing capability, affordability, and reliability.



Products mentioned in the material may be subject to government regulations and may not be available in all countries. Shipment and effective sale can only occur after approval from the regulator. Please check with local GE HealthCare representative for details.

© 2024 GE HealthCare.

Versana Active, InSite, LOGIQ and CrossXBeam are trademarks of GE HealthCare. GE is a trademark of General Electric Company used under trademark license.

October 2024 JB30851XX